

slangen+koenis
architecten



opdrachtgever
Gemeente Buitenpost

project
Zwembad Buitenpost

fase
Voorlopig Ontwerp

datum
23.05.2019

projectnummer
2017014



ESSENTRA

SPORTHAL

ZWEMBAD DE KÛPE

BENZINESTATION

WONINGEN

BEGRAAFPLAATS



ZWEMBAD DE KUPE



ESSENTRA



SPORTHAL

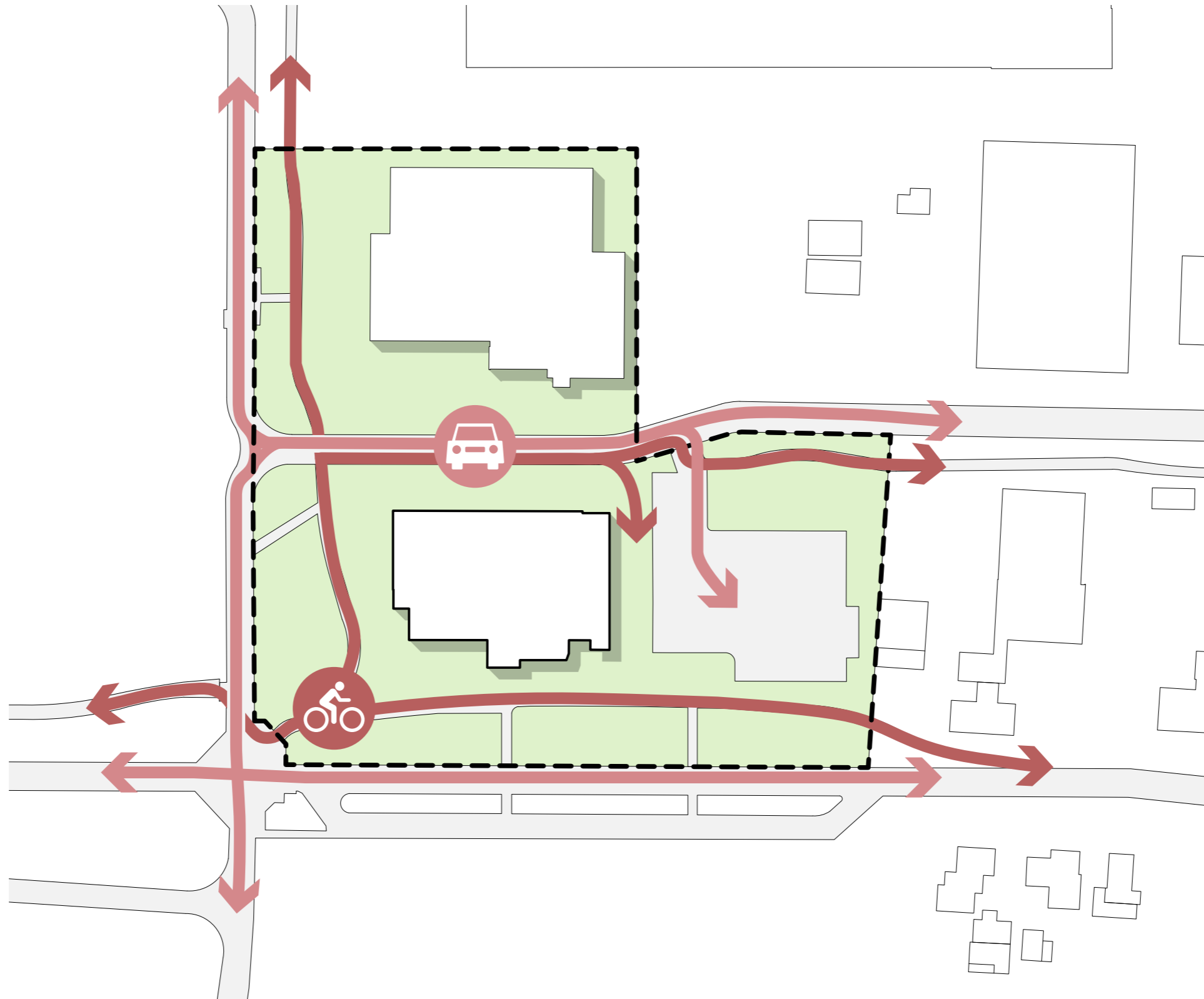








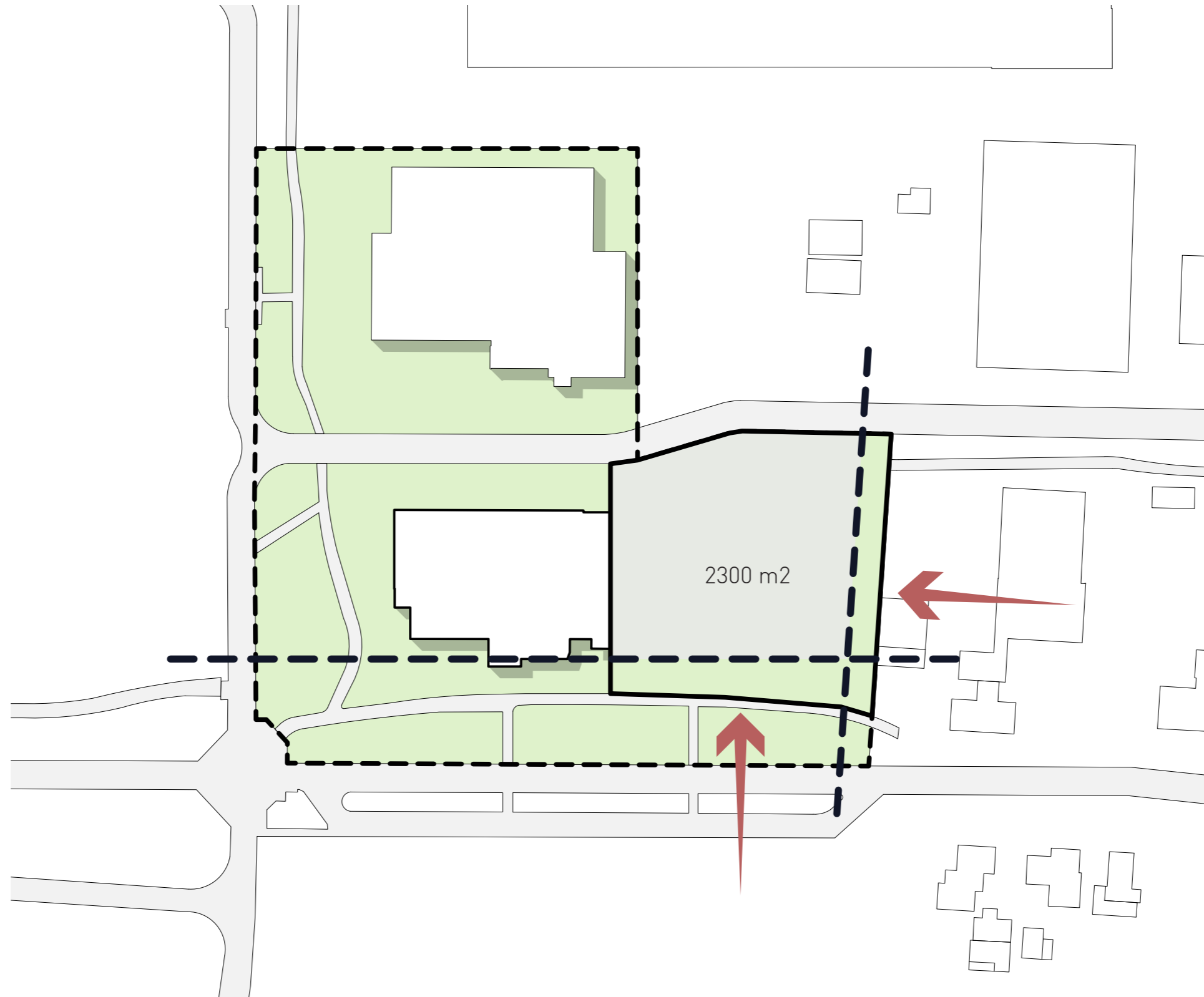
01. Huidige situatie



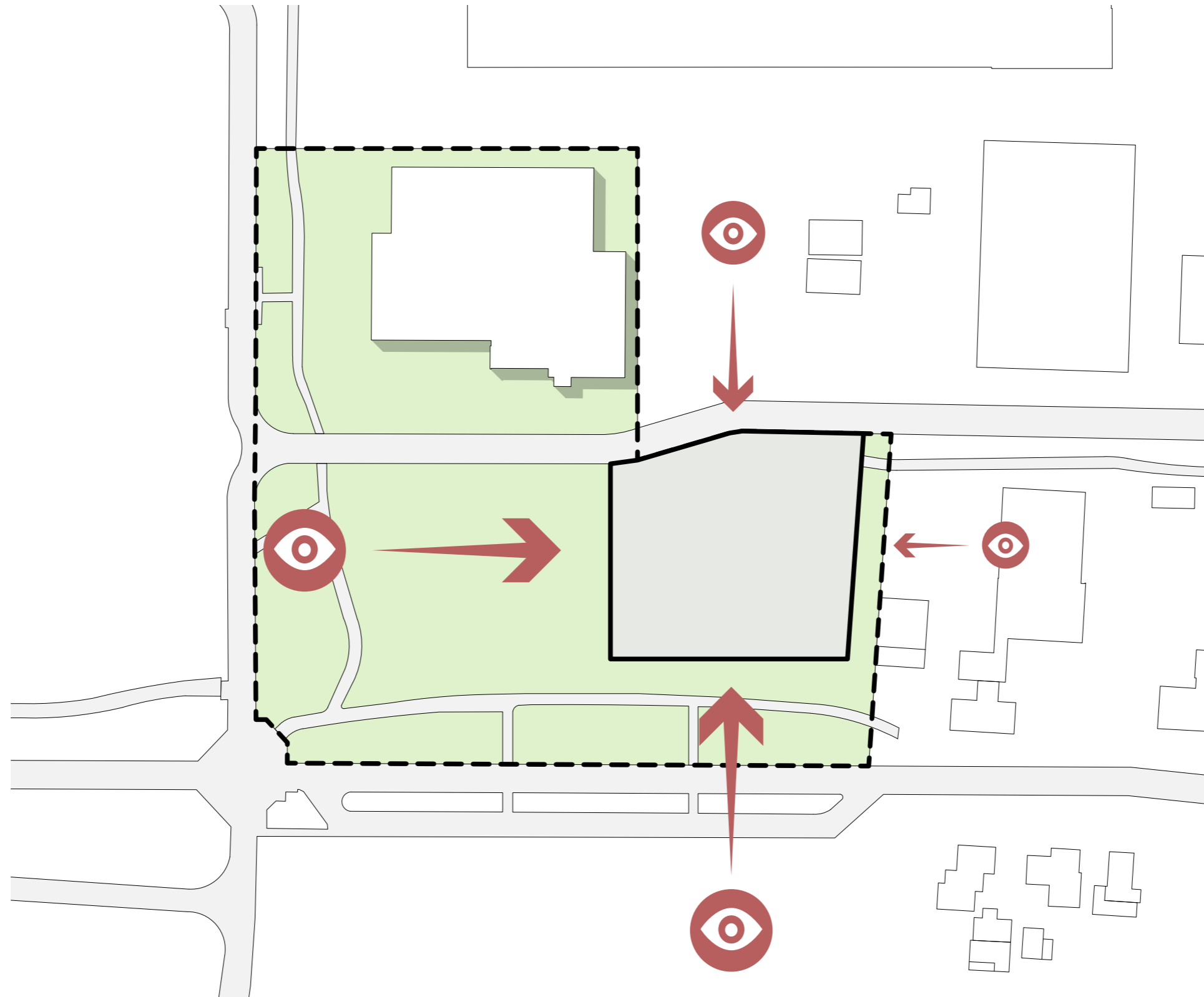
02. Routes



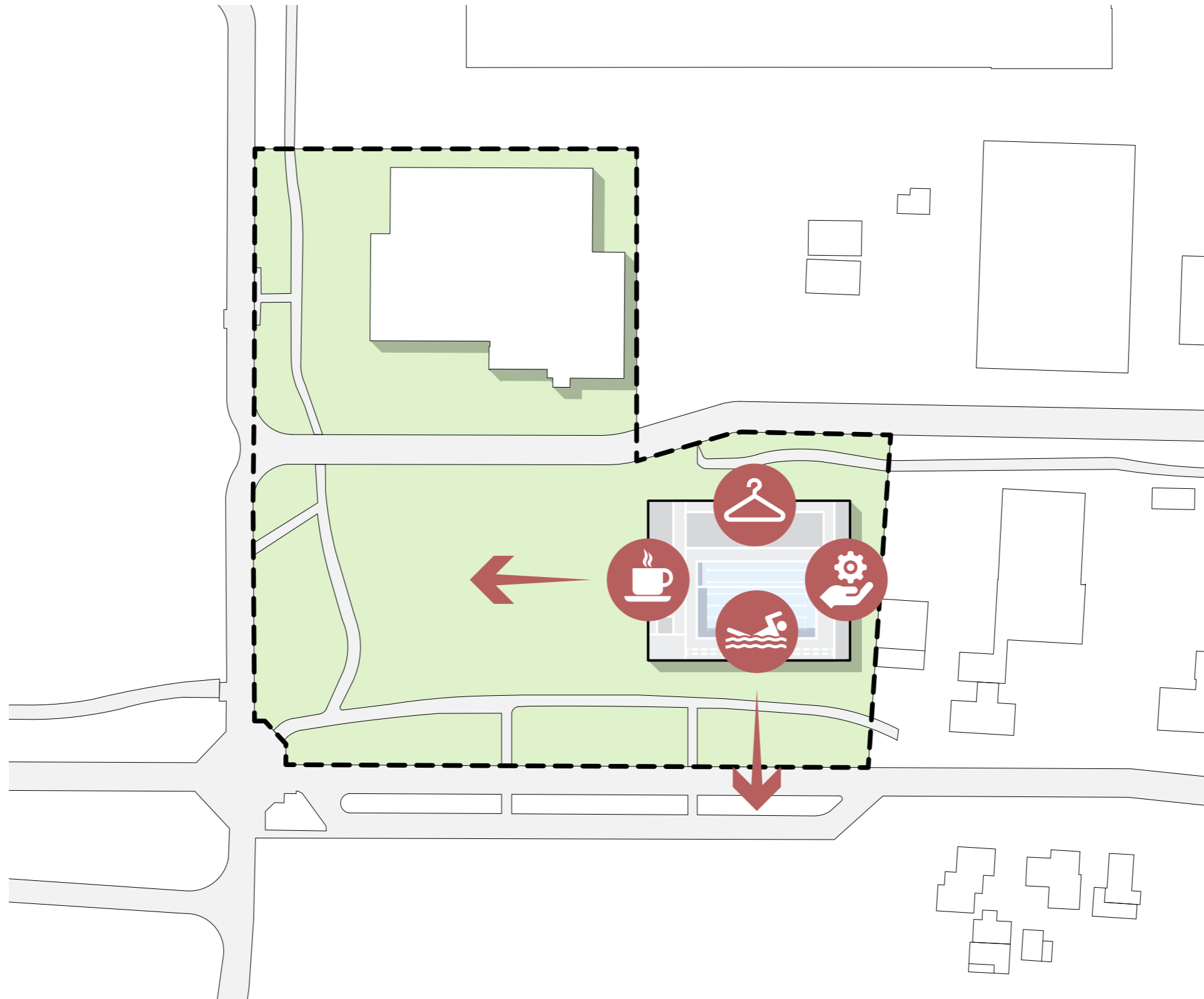
03. Bouwvlak



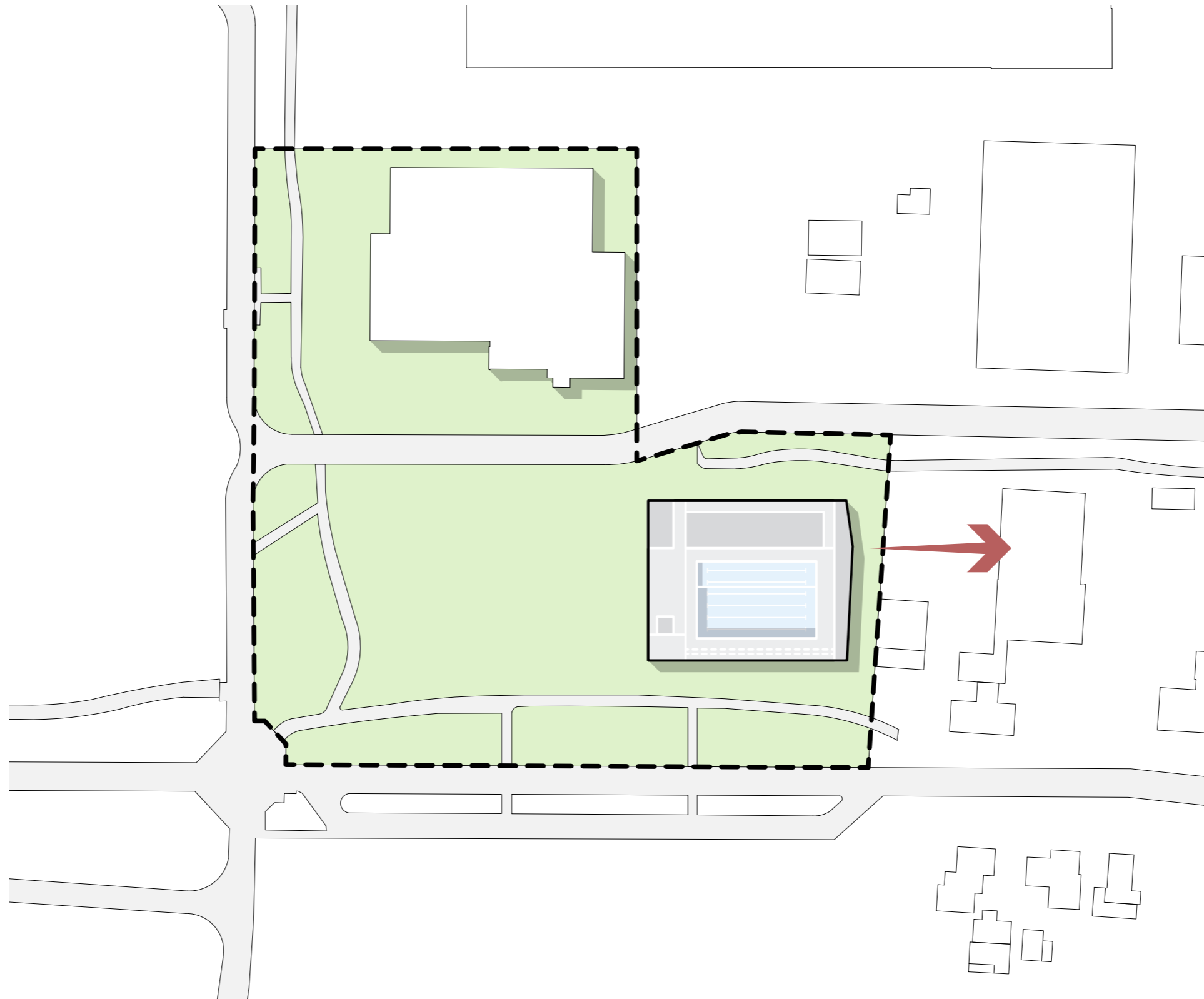
04. Rooilijn



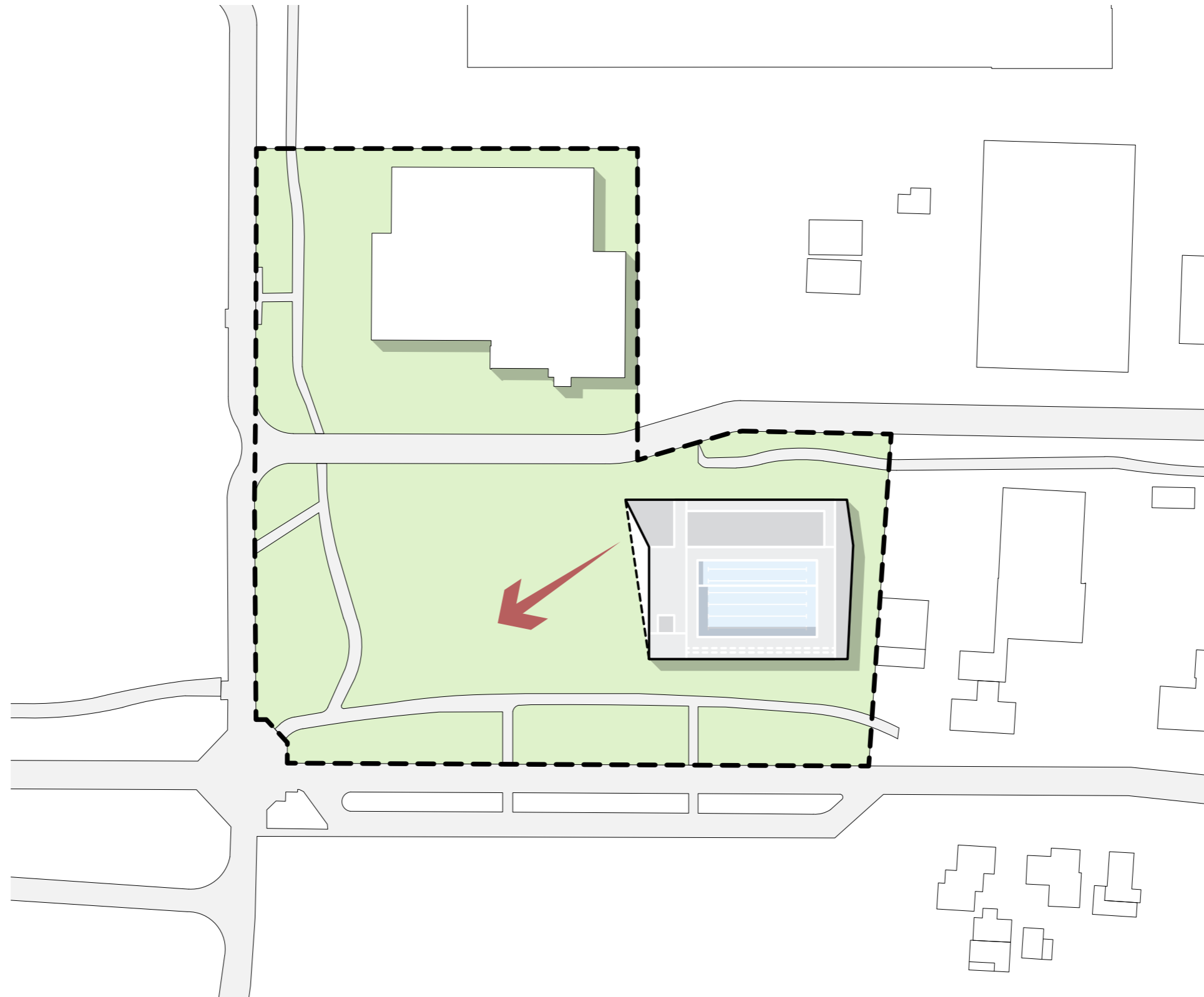
05. Zicht



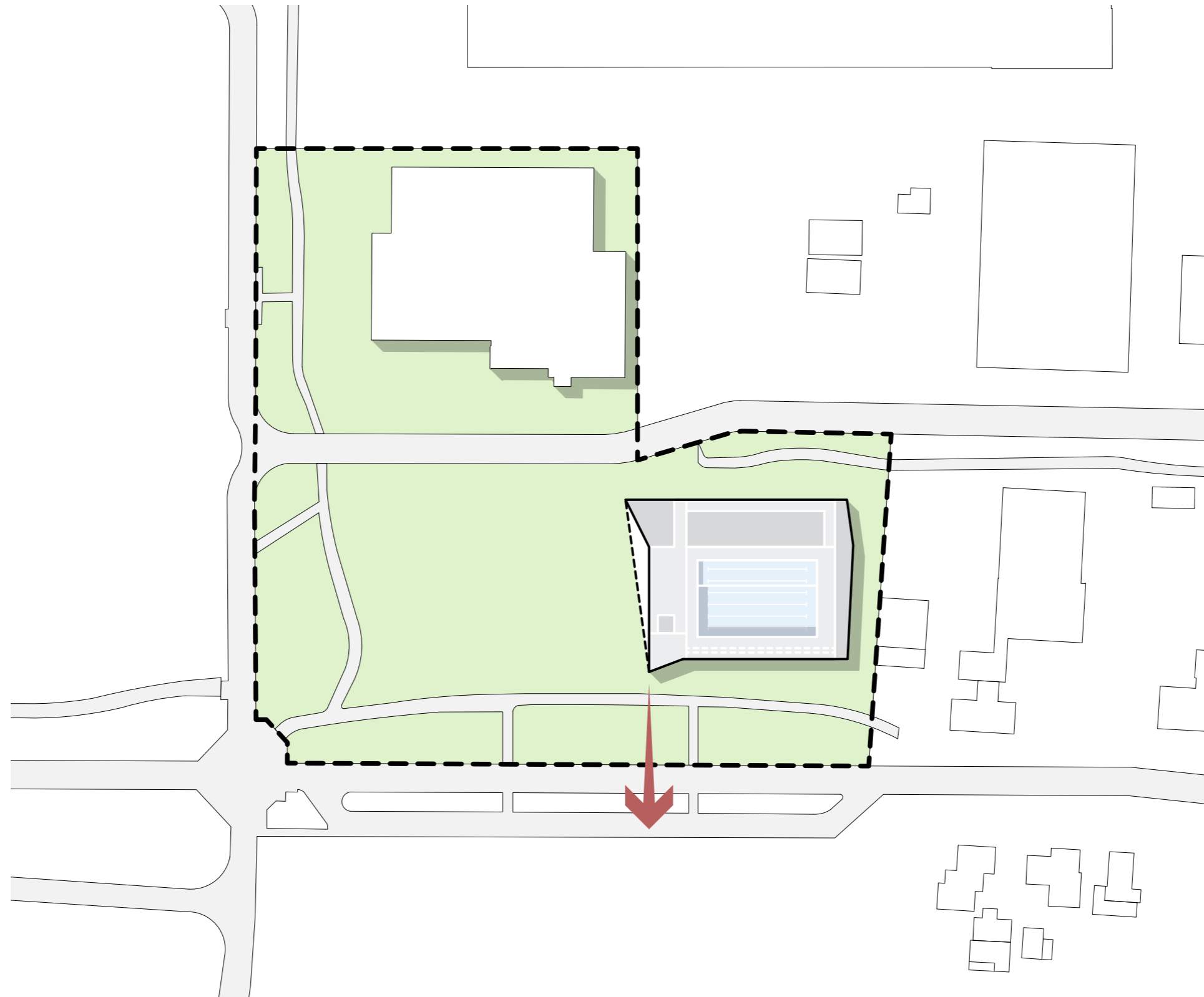
06. Functionele indeling



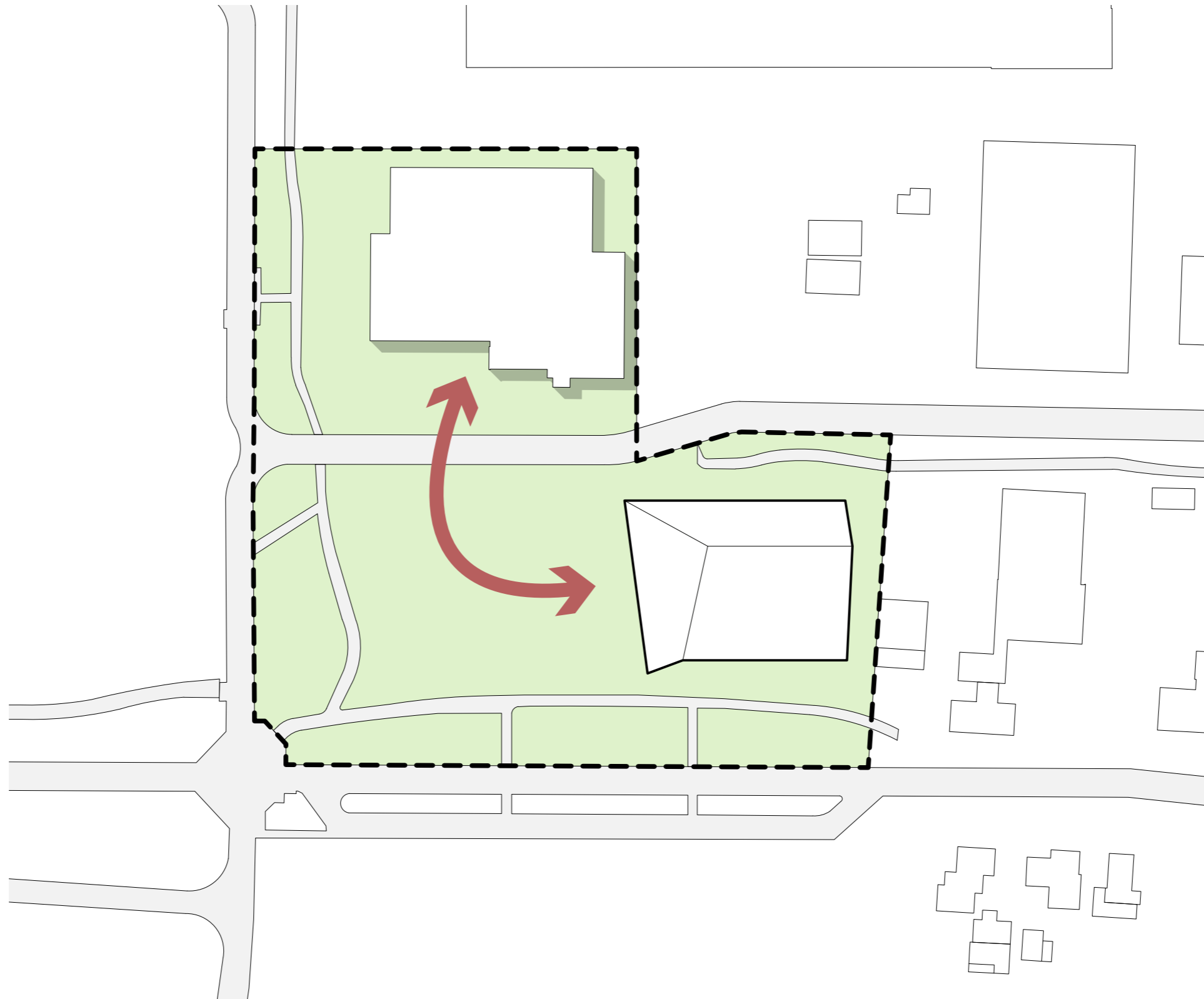
07. Uitlijnen met kavel



08. Rotatie naar Kuipersweg



09. Accent Kuipersweg



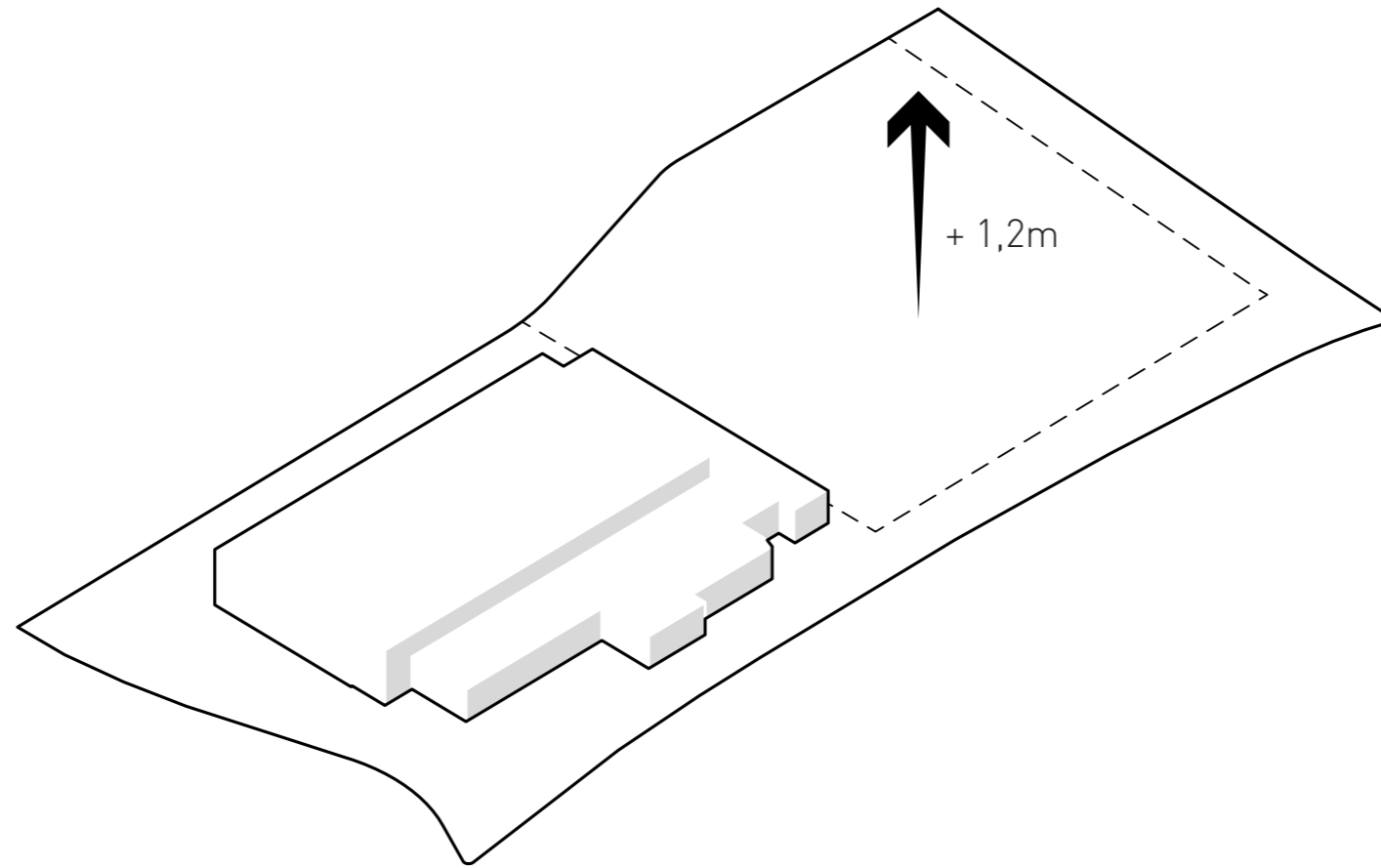
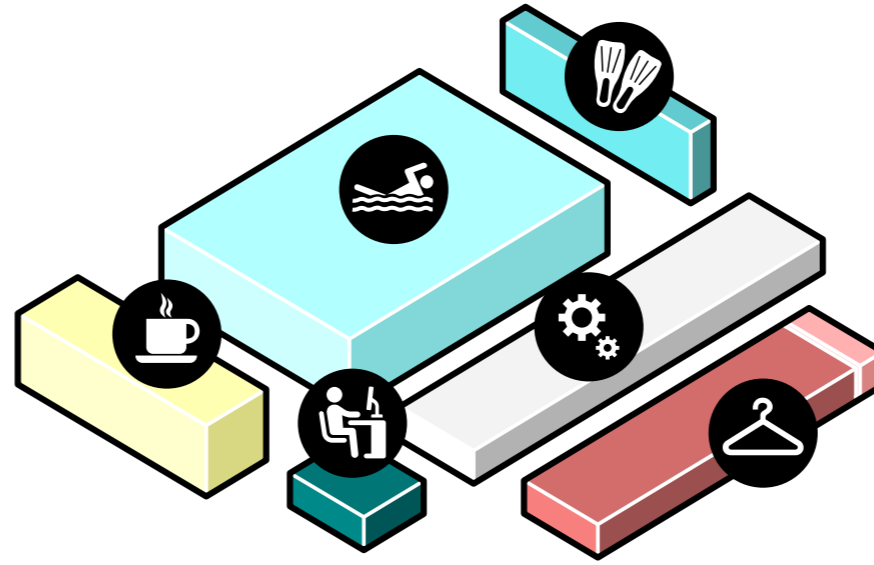
10. Verbinding met sporthal versterken



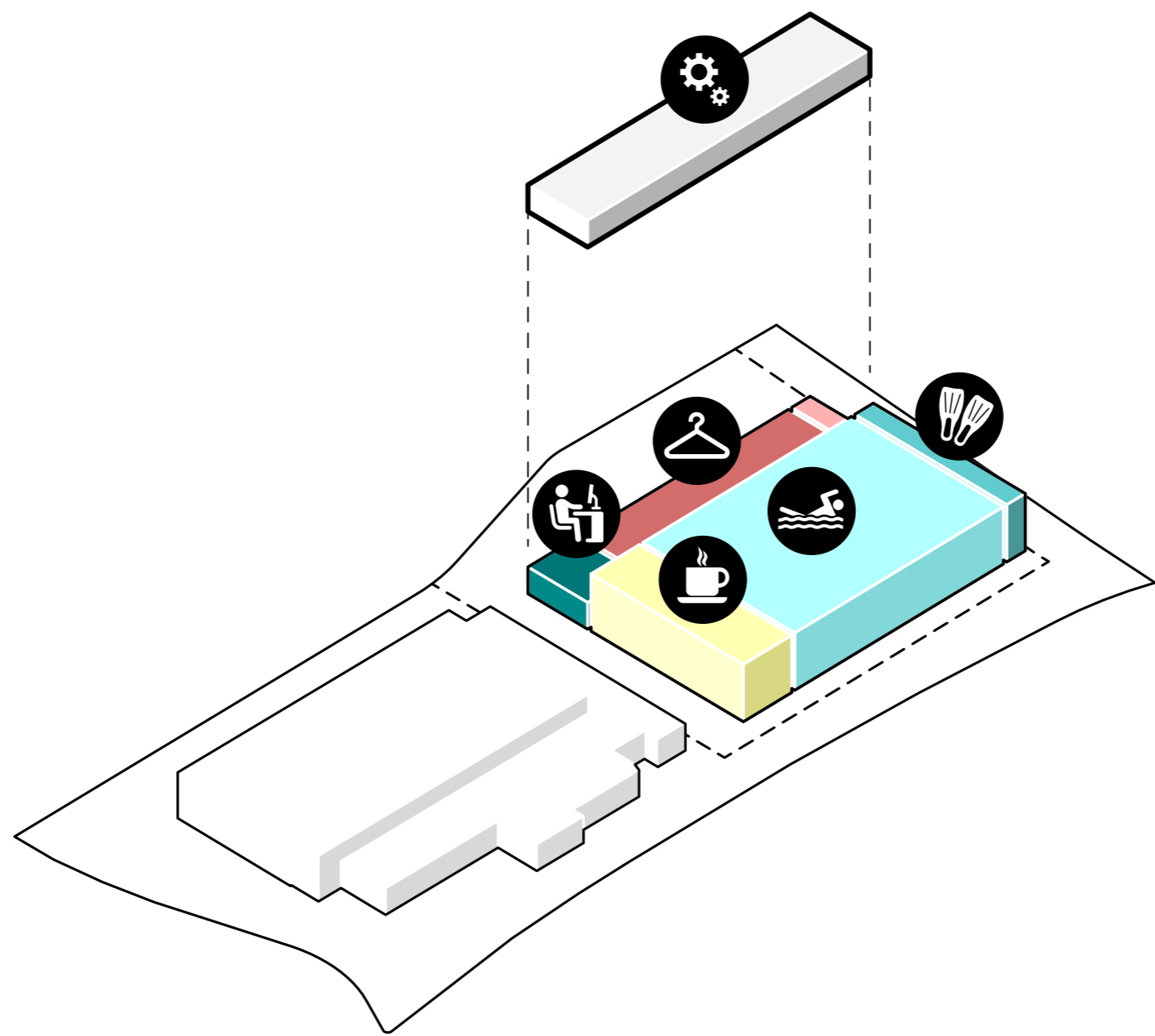
11. Functionele indeling terrein



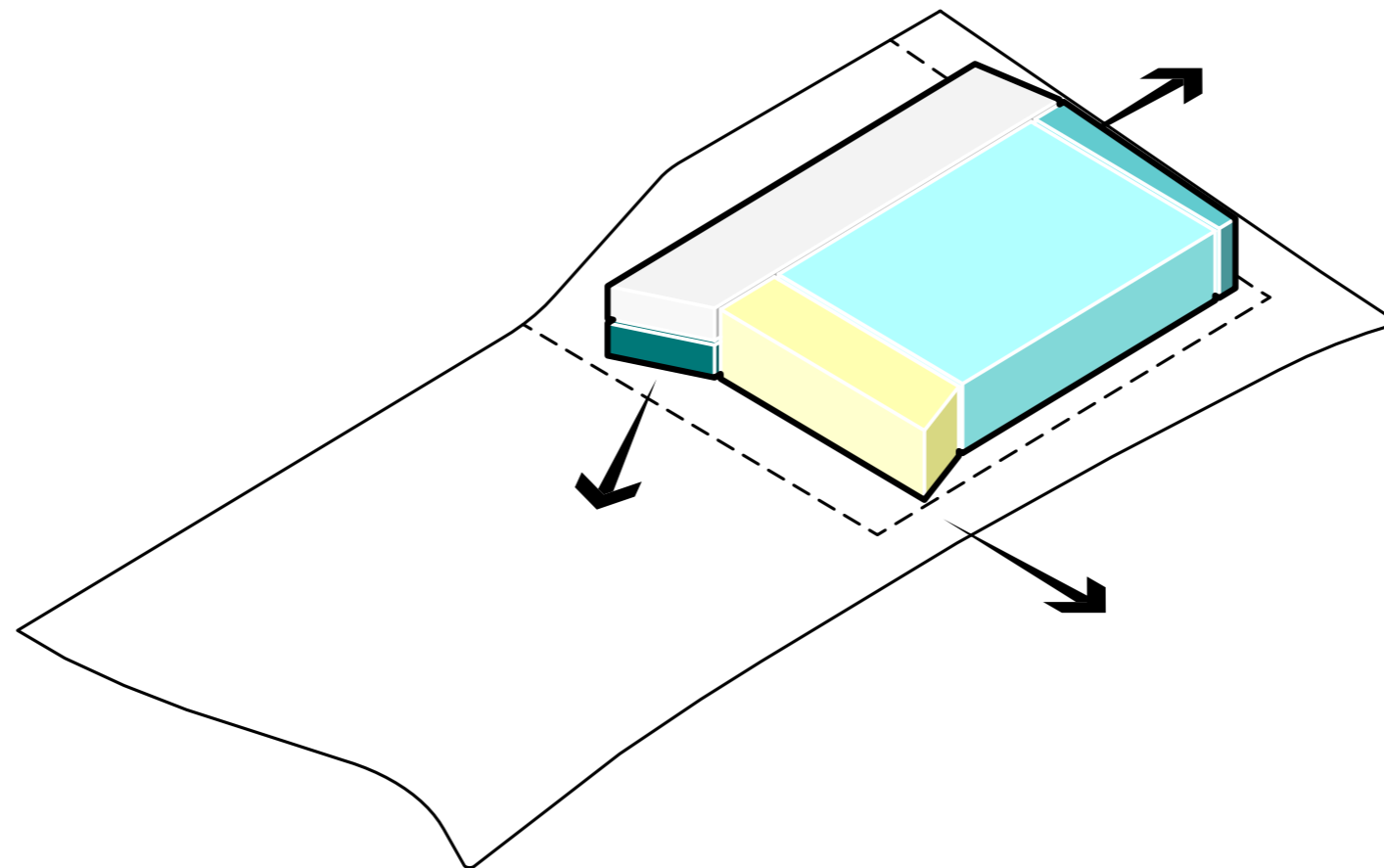
12. Groene inbedding



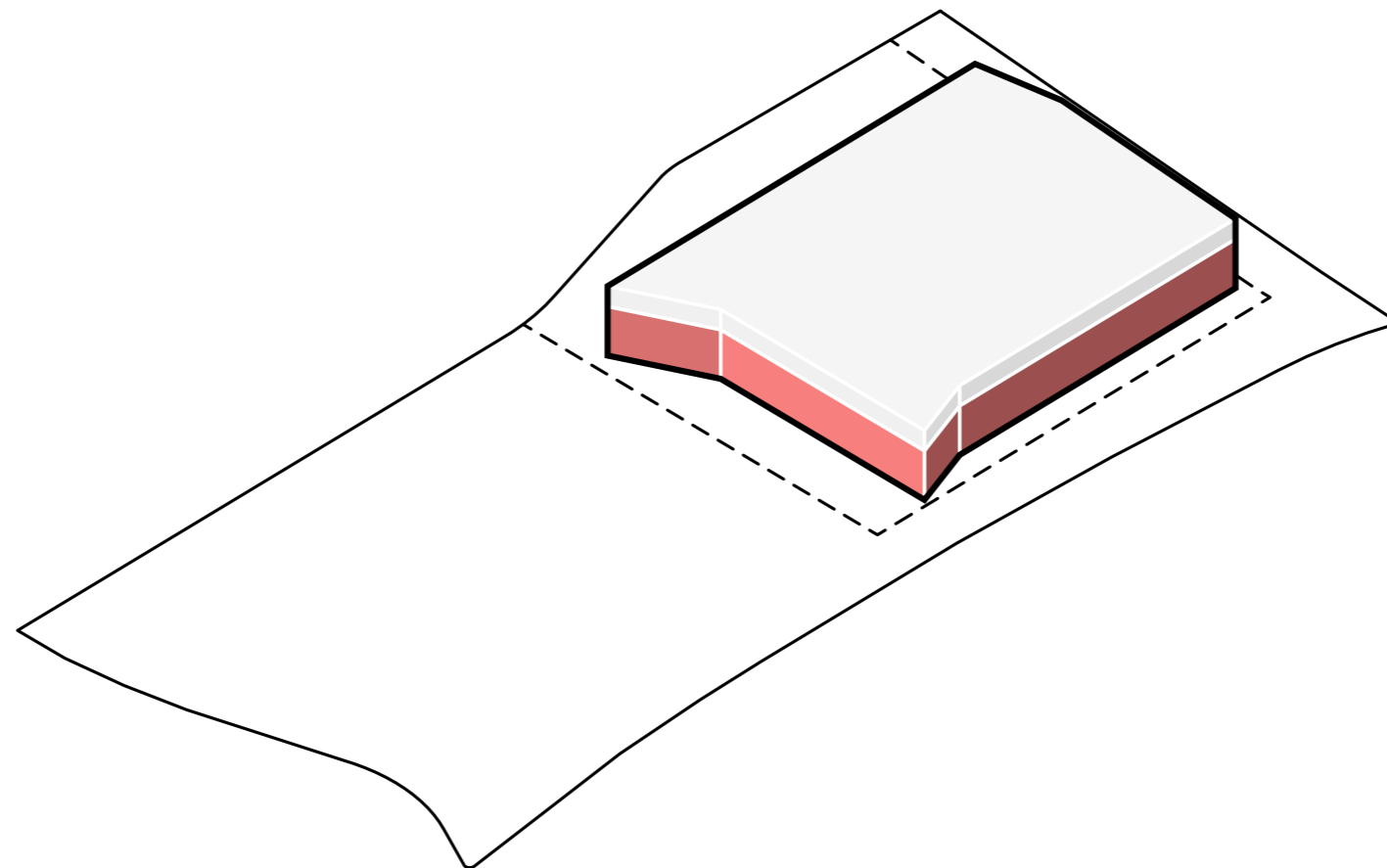
01. Programma + Verhoging maaiveld



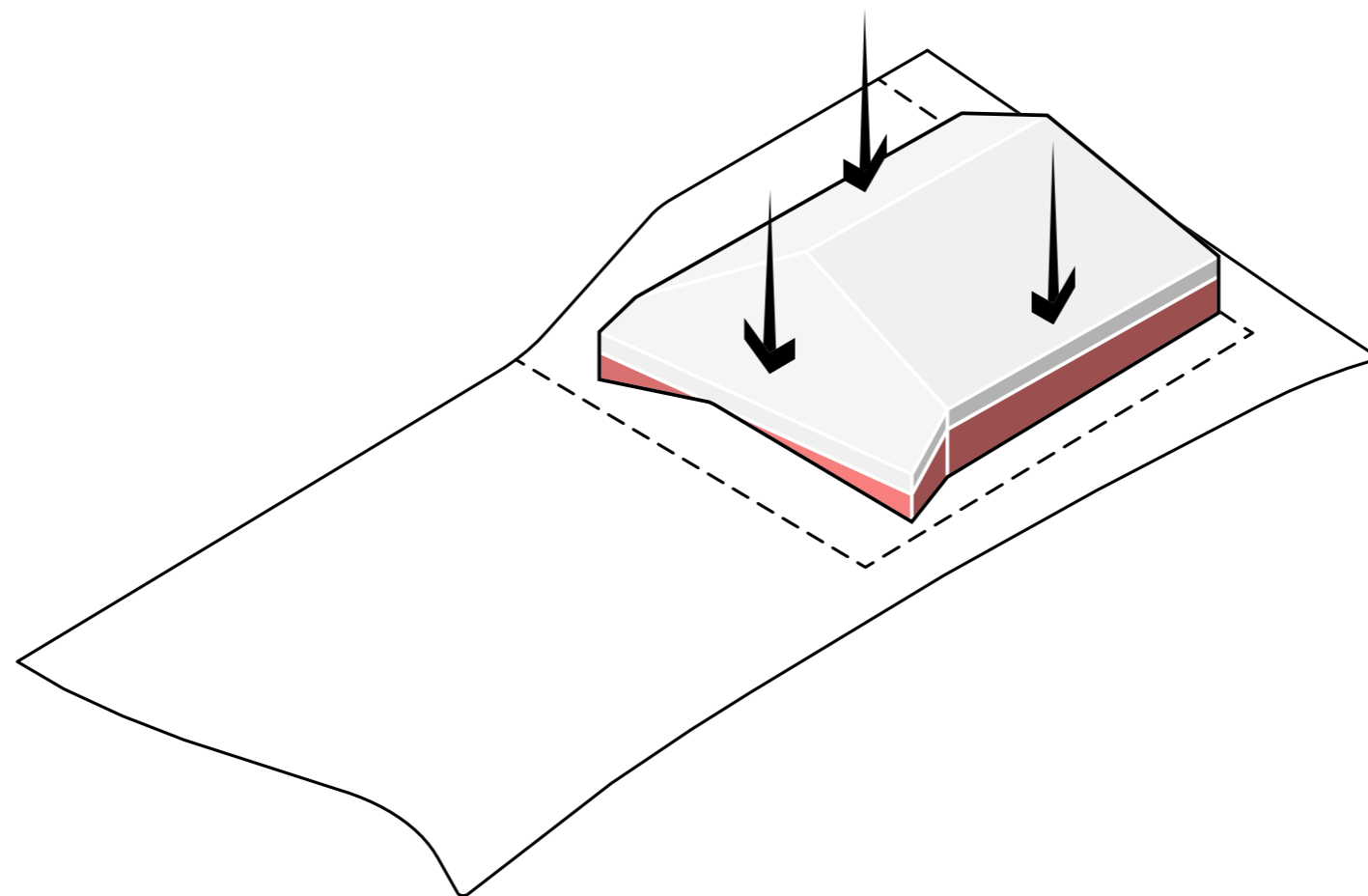
02. Functionele indeling



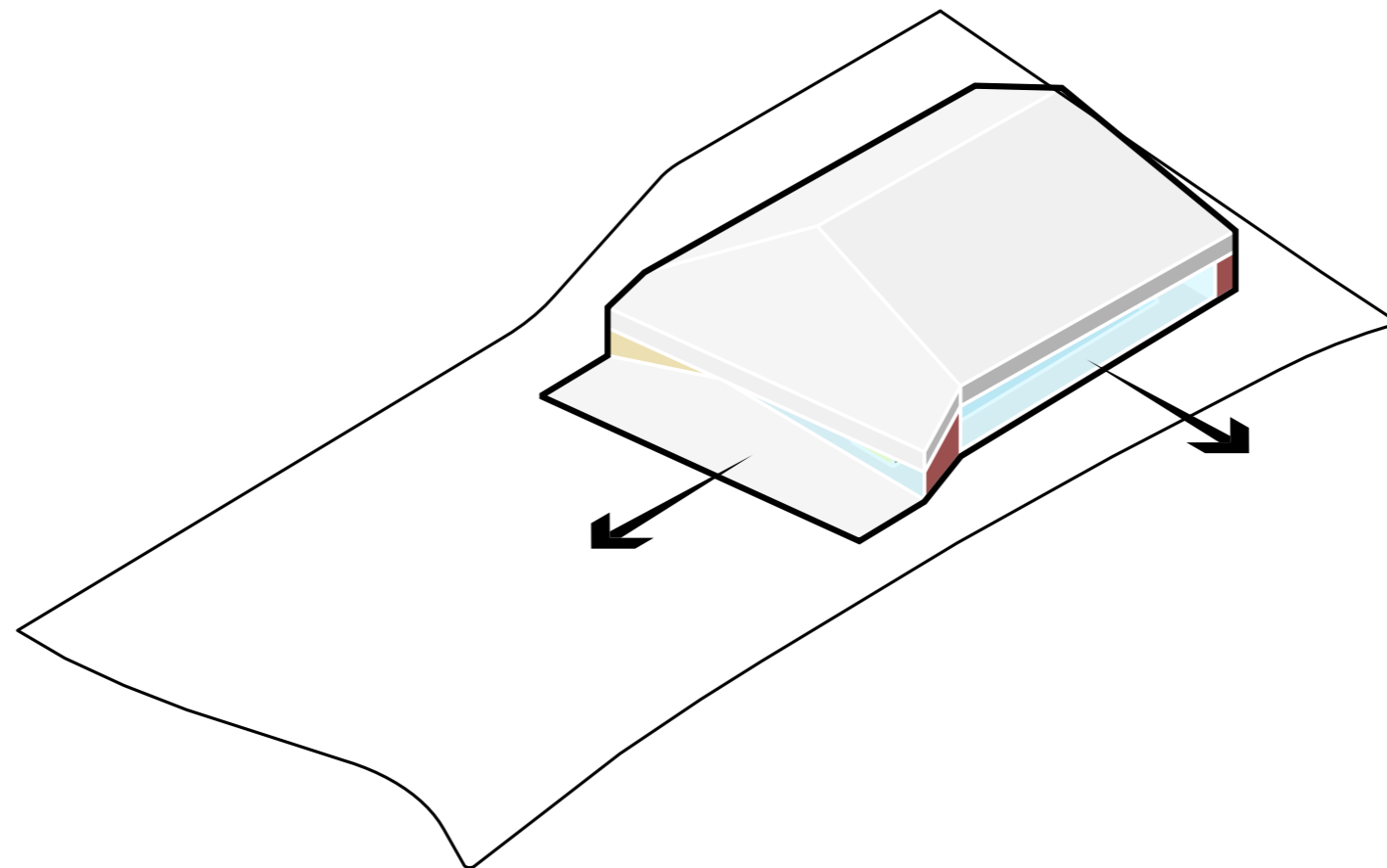
03. Toevoeging accenten



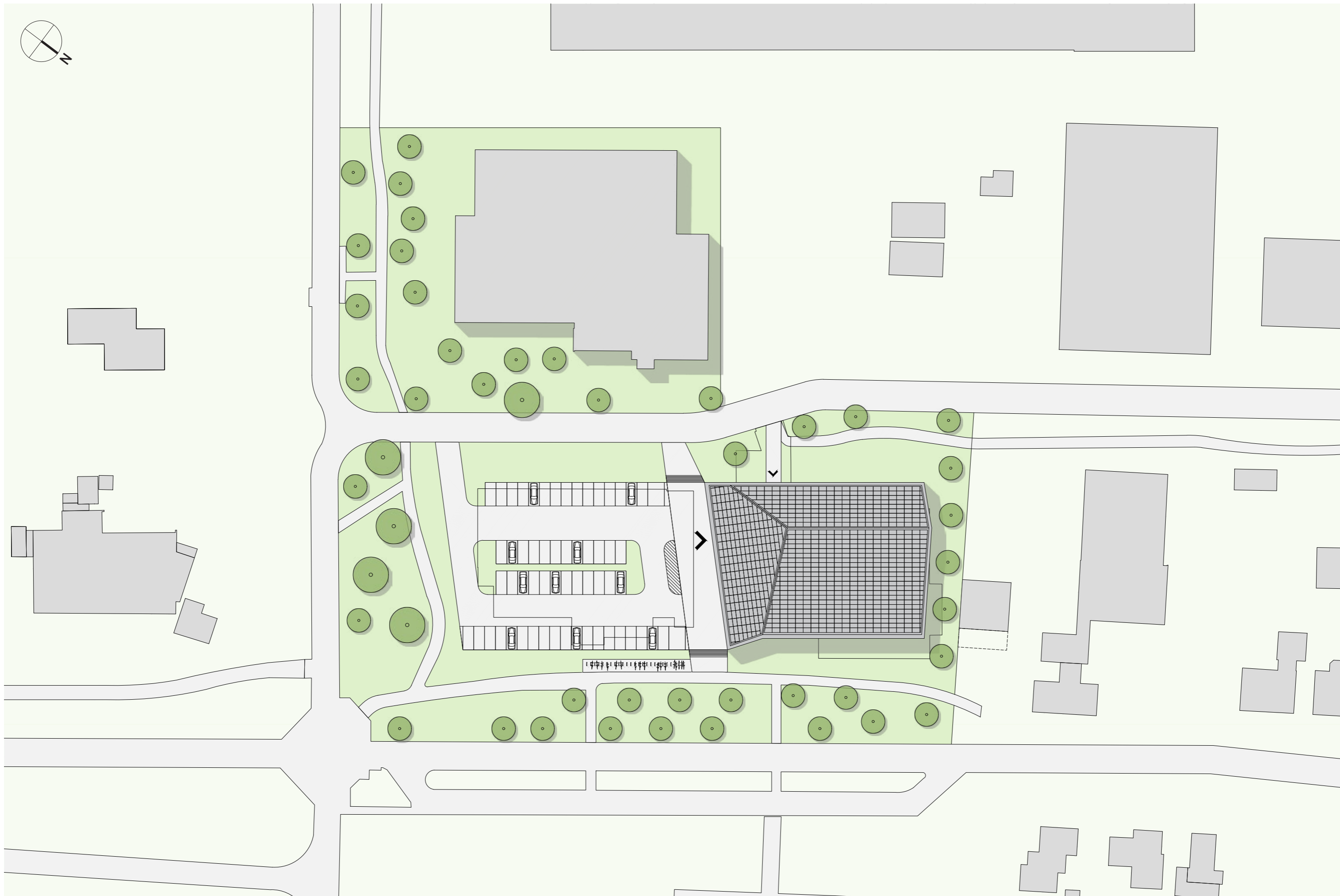
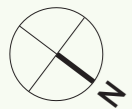
04. Materialisatie

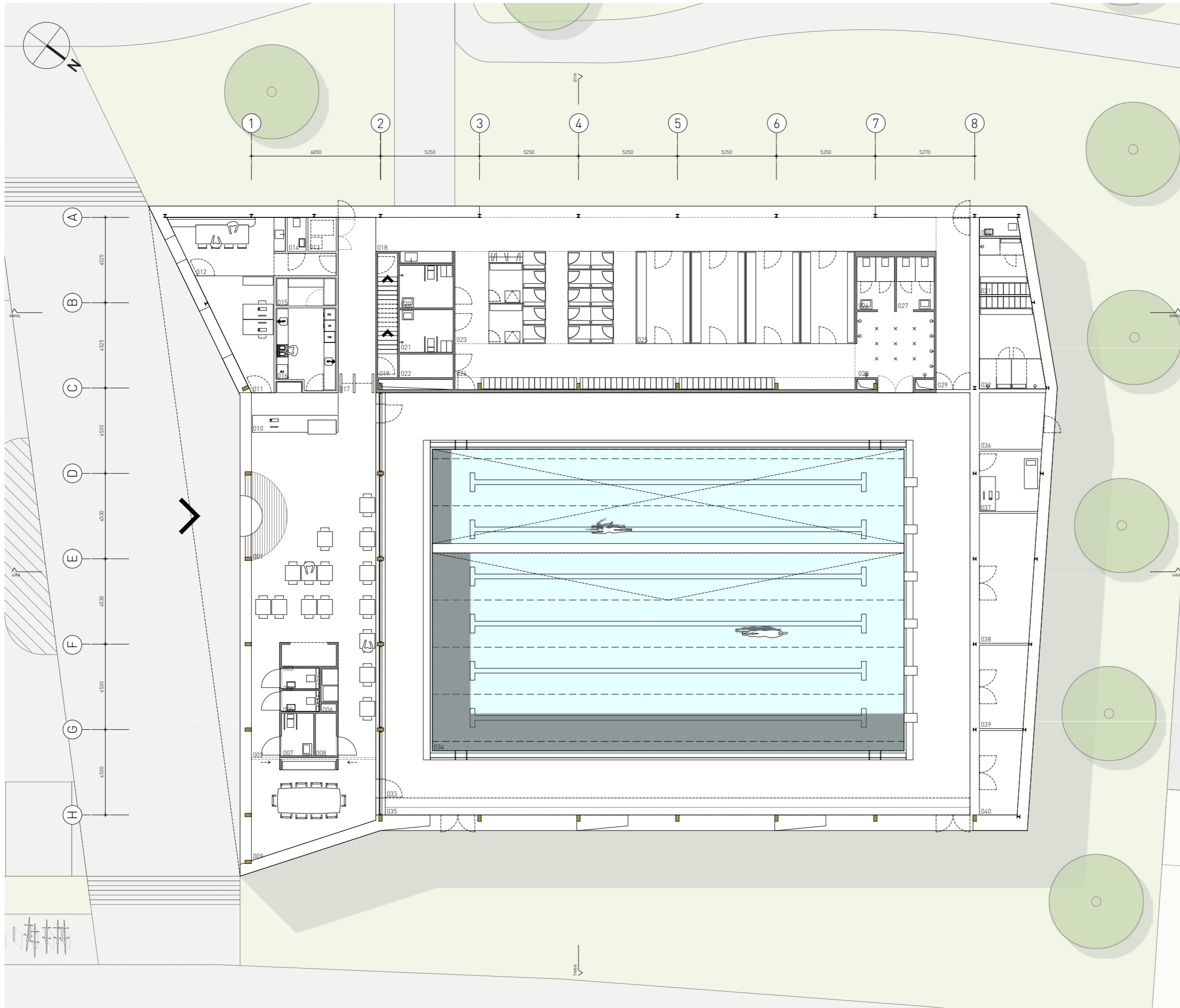


05. Verkleinen volume



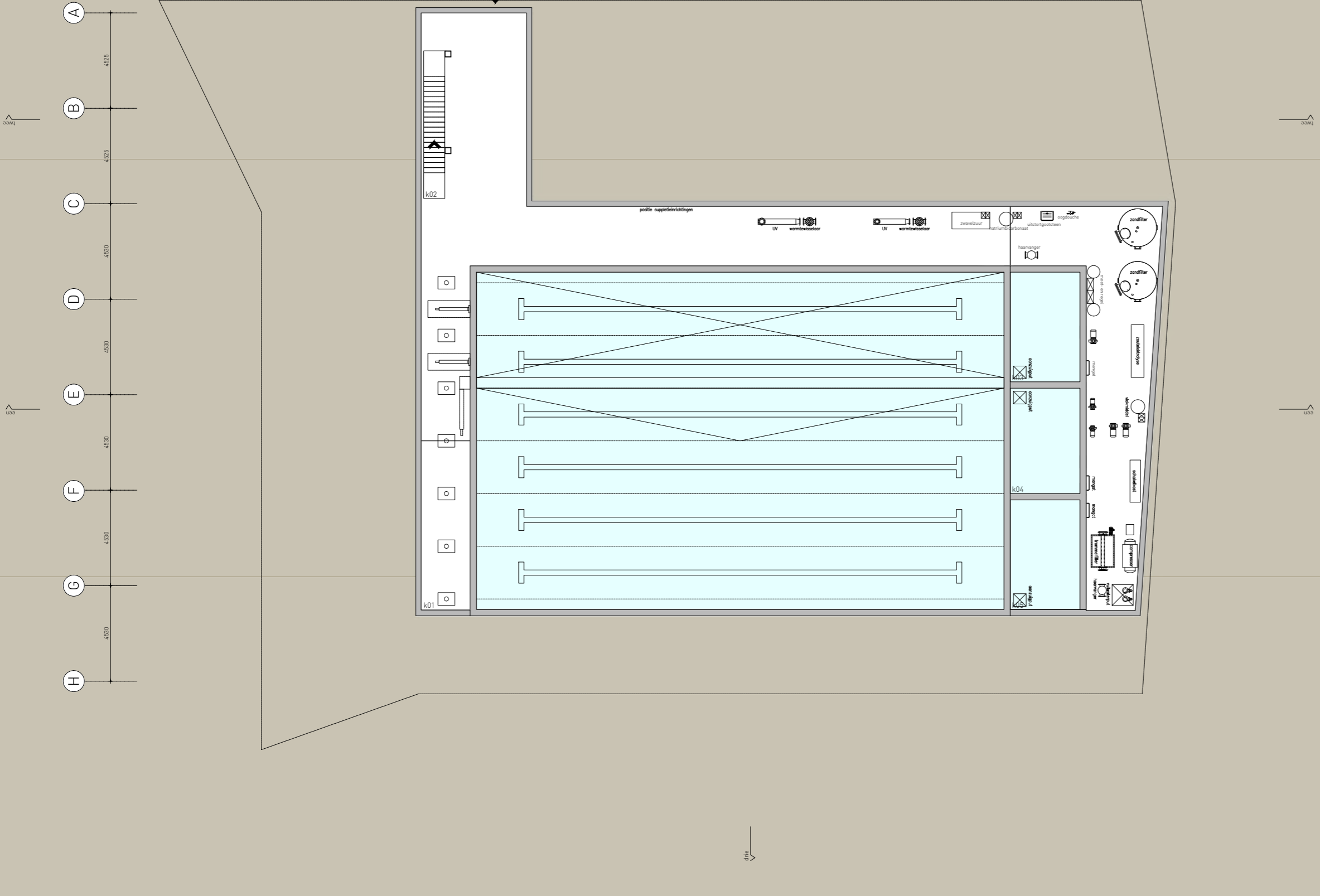
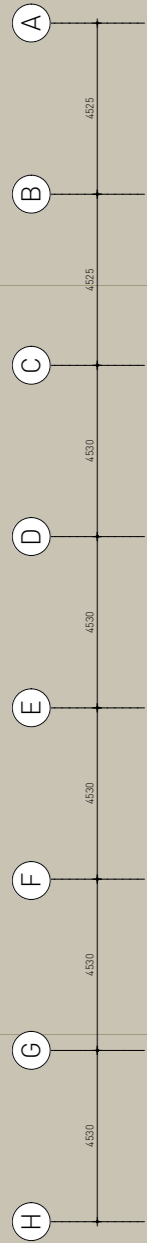
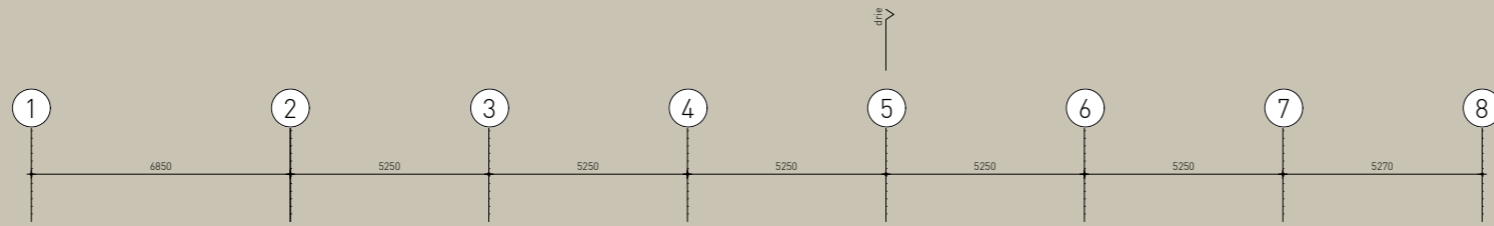
06. Gevelopeningen





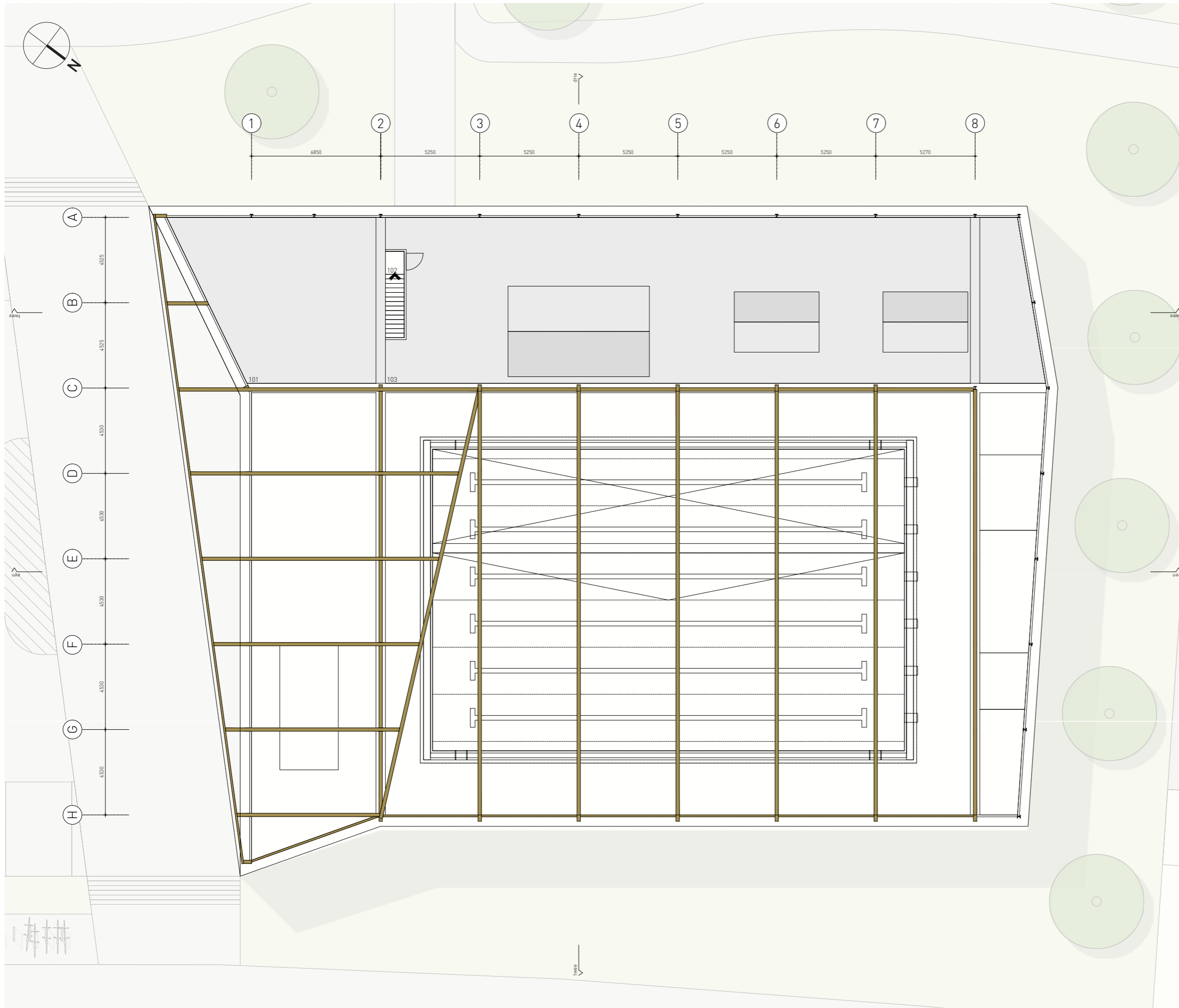
Ruimtestaat

nummer	omschrijving	opp
001	inkom	8.7
002	horeca	90.6
003	speelhoek	4.2
004	toilet heren	2.0
005	toilet dames	2.0
006	automaten	1.9
007	toilet miva	3.6
008	werkkast	2.5
009	verenigingsruimte	28.7
010	balie	9.7
011	kantoor	16.7
012	kantine	20.4
013	magazijn	4.8
014	toilet	1.8
015	voorraadkast	4.8
016	keuken	13.2
017	gang	18.6
018	vuile voetzone	53.5
019	trap	6.9
020	miva kleedruimte heren	6.4
021	miva kleedruimte dames	6.4
022	werkkast	3.6
023	kleedcabines	47.0
024	schone voetzone	38.2
025	groepskleedruimten	56.9
026	toilet heren	5.6
027	toilet dames	5.6
028	doucheplein	15.5
029	gangzone personeelskleden	16.4
030	toilet personeel	2.1
031	kleedruimte personeel heren	7.3
032	kleedruimte personeel dames	15.3
033	perron	266.6
034	25m bad	400.3
035	tribune	27.9
036	stookruimte	10.2
037	ehbo ruimte	10.2
038	berging 1	19.6
039	berging 2	10.9
040	berging 3	9.6
101	technische ruimte 1/2	78.9
102	trap	2.7
103	technische ruimte 2/2	296.7
k01	techniekruimte	222.1
k02	trap	7.9
k03	bufferkelder	17.2
k04	vuilwaterbuffer	16.5
k05	bufferkelder	17.2



Ruimtestaat

nummer	omschrijving	opp
001	incom	8.7
002	horeca	90.6
003	speelhoek	4.2
004	toilet heren	2.0
005	toilet dames	2.0
006	automaten	1.9
007	toilet miva	3.6
008	werkkast	2.5
009	verenigingsruimte	28.7
010	balie	9.7
011	kantoor	16.7
012	kantine	20.4
013	magazijn	4.8
014	toilet	1.8
015	voorraadkast	4.8
016	keuken	13.2
017	gang	18.6
018	vuile voetenzone	53.5
019	trap	6.9
020	miva kleedruimte heren	6.4
021	miva kleedruimte dames	6.4
022	werkkast	3.6
023	kleedcabines	47.0
024	schone voetenzone	38.2
025	groepskleedruimten	56.9
026	toilet heren	5.6
027	toilet dames	5.6
028	doucheplein	15.5
029	gangzone personeelskleden	16.4
030	toilet personeel	2.1
031	kleedruimte personeel heren	7.3
032	kleedruimte personeel dames	15.3
033	perron	266.6
034	25m bad	400.3
035	tribune	27.9
036	stookruimte	10.2
037	ehbo ruimte	10.2
038	berging 1	19.6
039	berging 2	10.9
040	berging 3	9.6
101	technische ruimte 1/2	78.9
102	trap	2.7
103	technische ruimte 2/2	296.7
k01	techniekrumte	222.1
k02	trap	7.9
k03	bufferkelder	17.2
k04	vuilwaterbuffer	16.5
k05	bufferkelder	17.2

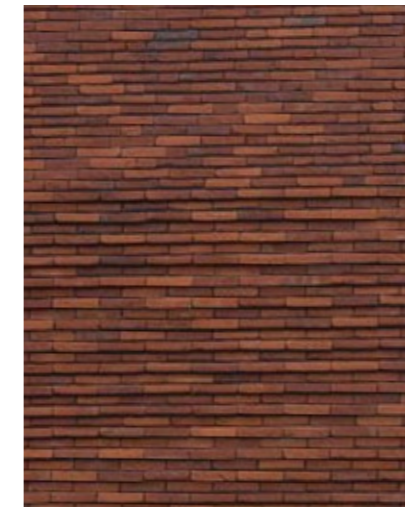
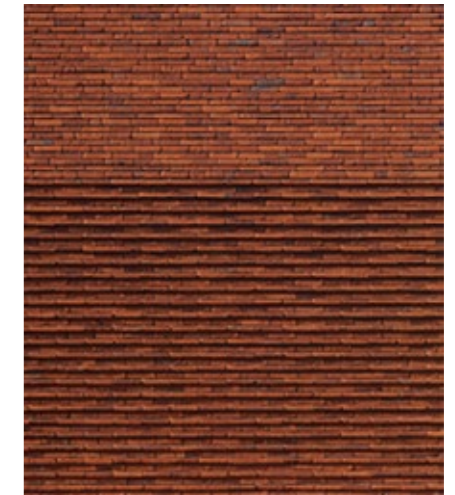
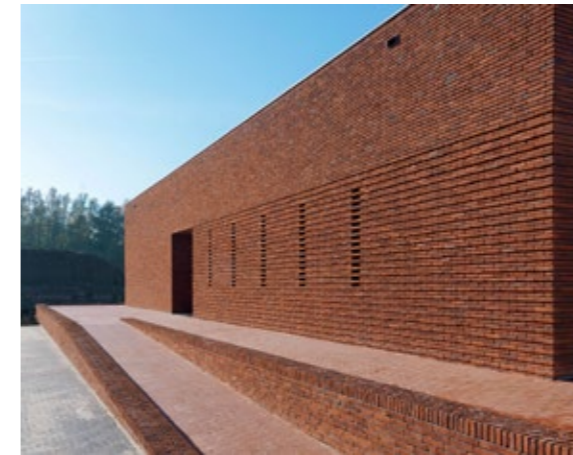


Ruimtestaat

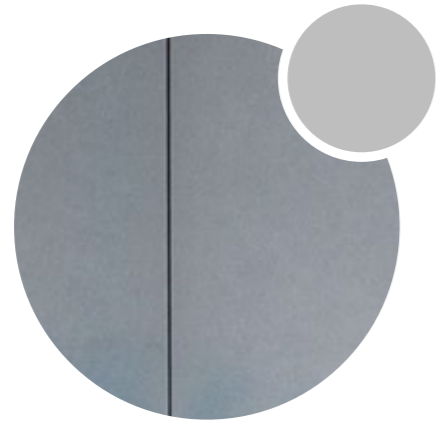
nummer	omschrijving	opp
001	inkom	8.7
002	horeca	90.6
003	speelhoek	4.2
004	toilet heren	2.0
005	toilet dames	2.0
006	automaten	1.9
007	toilet miva	3.6
008	werkkast	2.5
009	verenigingsruimte	28.7
010	balie	9.7
011	kantoor	16.7
012	kantine	20.4
013	magazijn	4.8
014	toilet	1.8
015	voorraadkast	4.8
016	keuken	13.2
017	gang	18.6
018	vuile voetenzone	53.5
019	trap	6.9
020	miva kleedruimte heren	6.4
021	miva kleedruimte dames	6.4
022	werkkast	3.6
023	kleedcabines	47.0
024	schone voetenzone	38.2
025	groepskleedruimten	56.9
026	toilet heren	5.6
027	toilet dames	5.6
028	doucheplein	15.5
029	gangzone personeelskleden	16.4
030	toilet personeel	2.1
031	kleedruimte personeel heren	7.3
032	kleedruimte personeel dames	15.3
033	perron	266.6
034	25m bad	400.3
035	tribune	27.9
036	stookruimte	10.2
037	ehbo ruimte	10.2
038	berging 1	19.6
039	berging 2	10.9
040	berging 3	9.6
101	technische ruimte 1/2	78.9
102	trap	2.7
103	technische ruimte 2/2	296.7
k01	techniekruimte	222.1
k02	trap	7.9
k03	bufferkelder	17.2
k04	vuilwaterbuffer	16.5
k05	bufferkelder	17.2



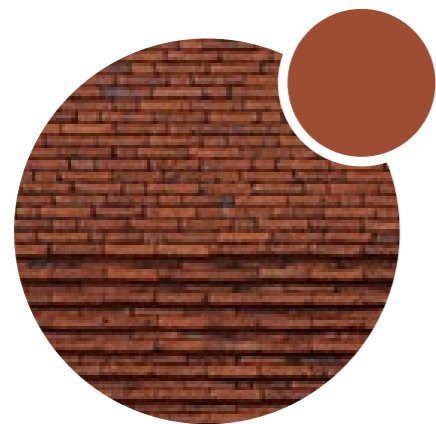
Lokale inspiratie



Warme en tijdloze, maar moderne vormgeving



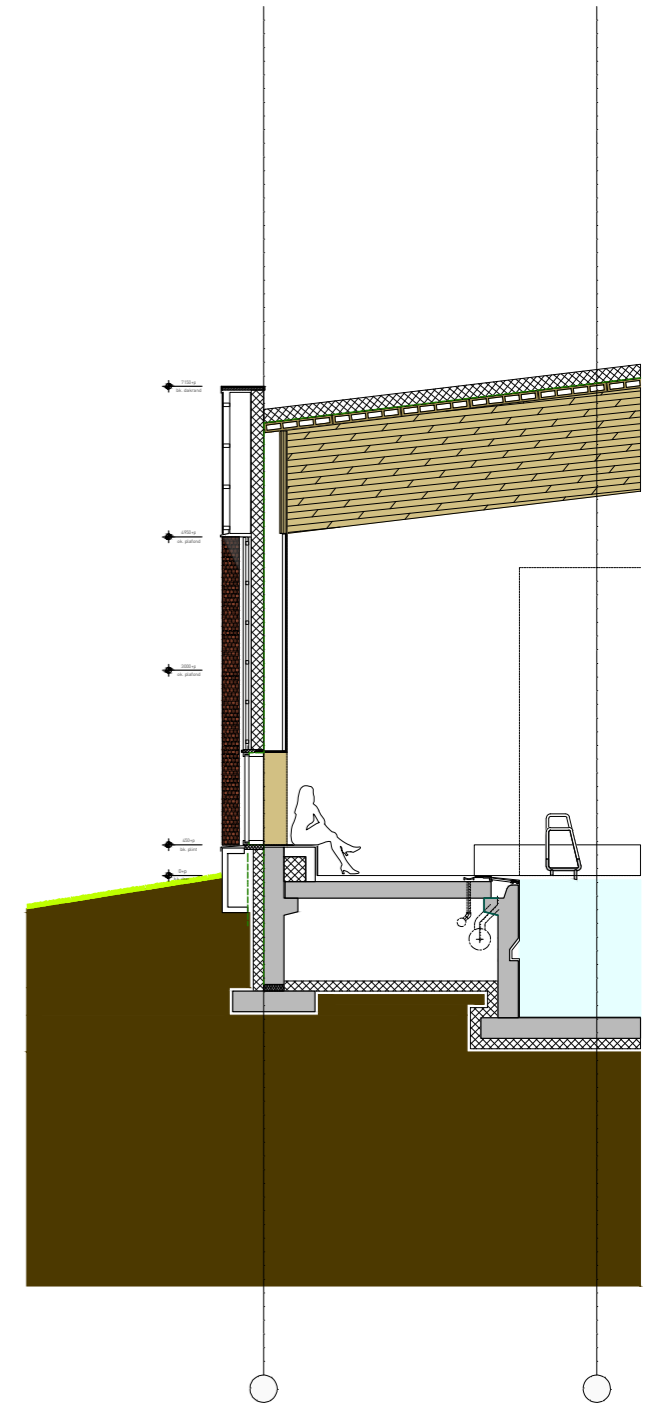
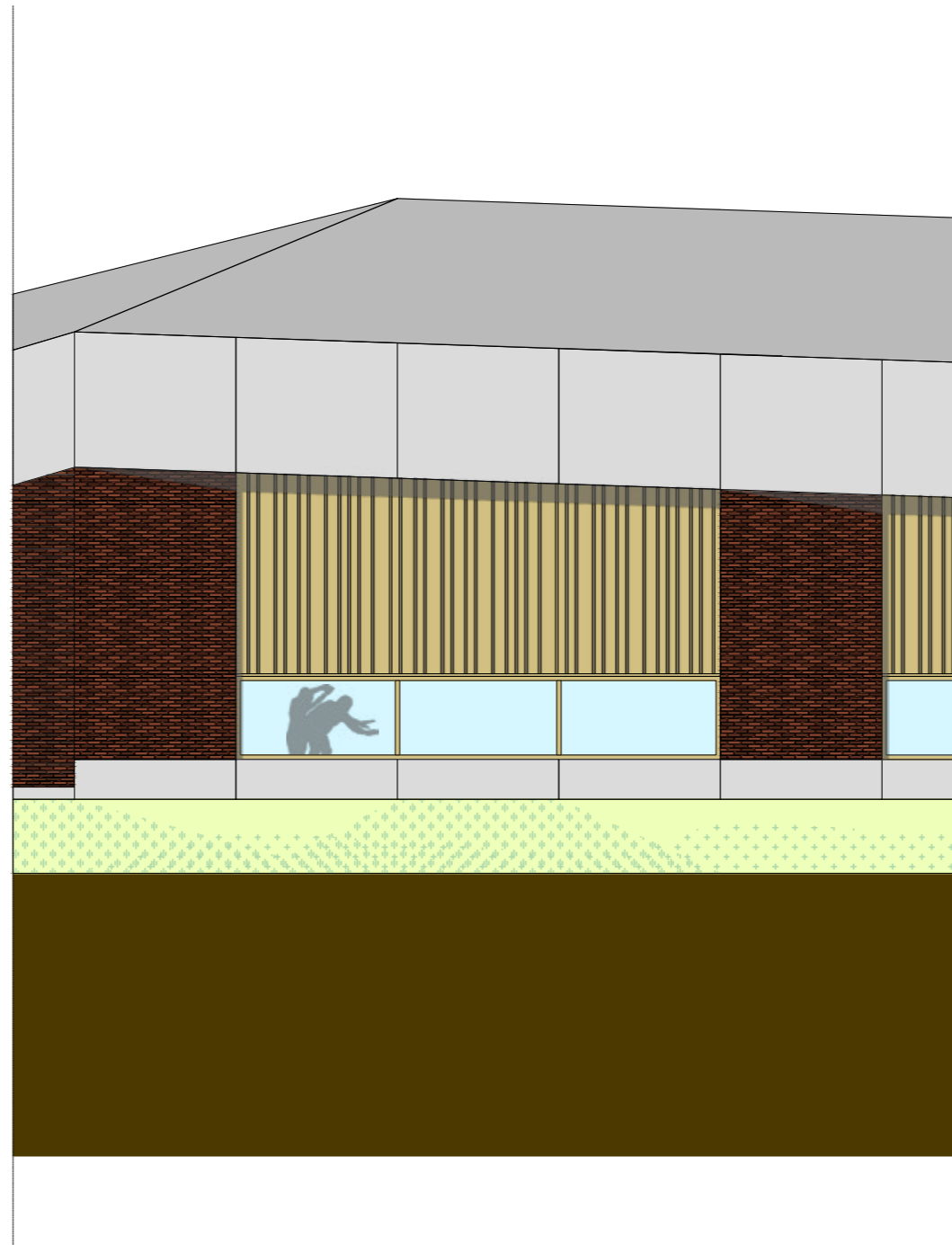
glasvezel versterkte
betonplaten

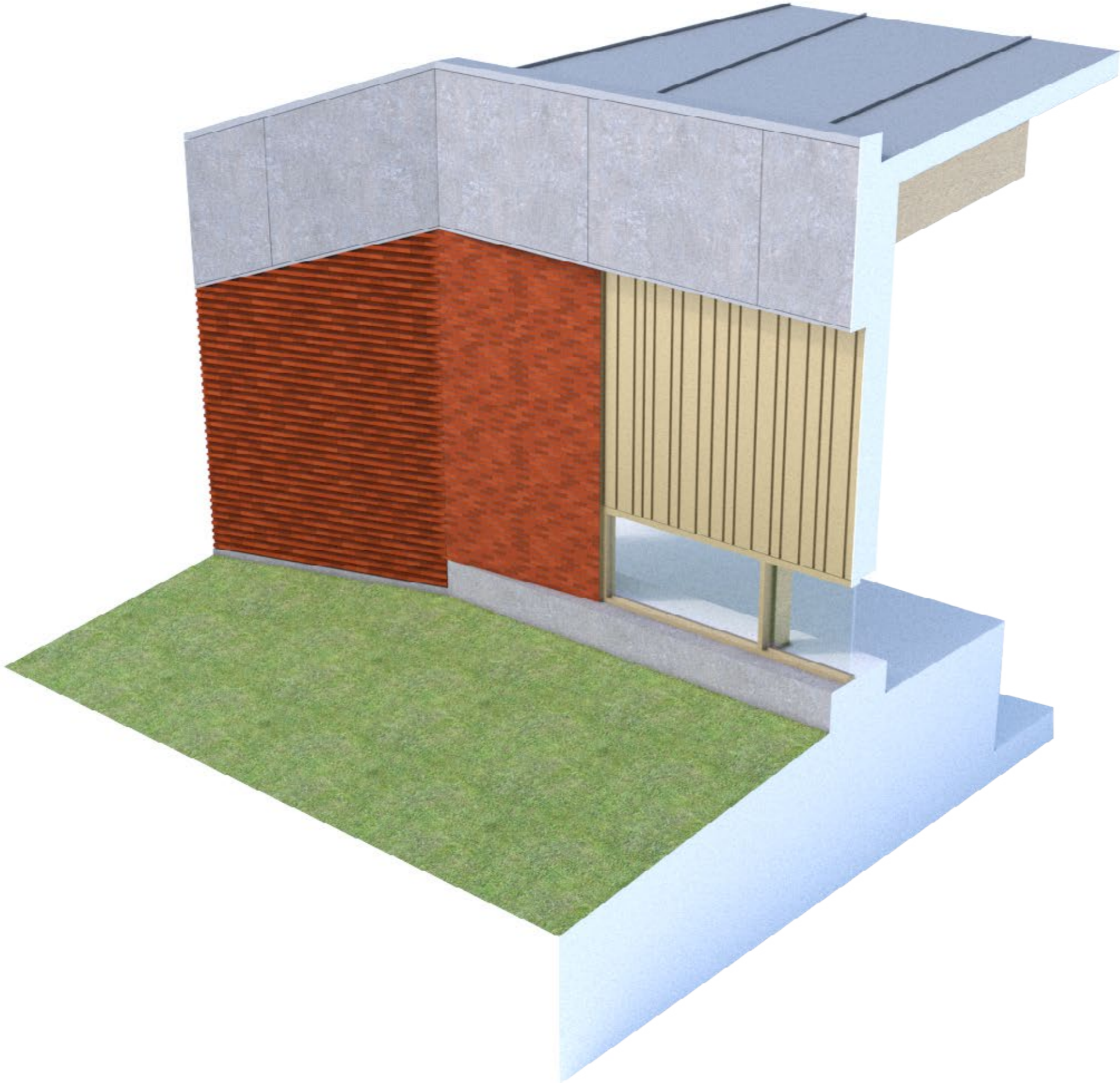


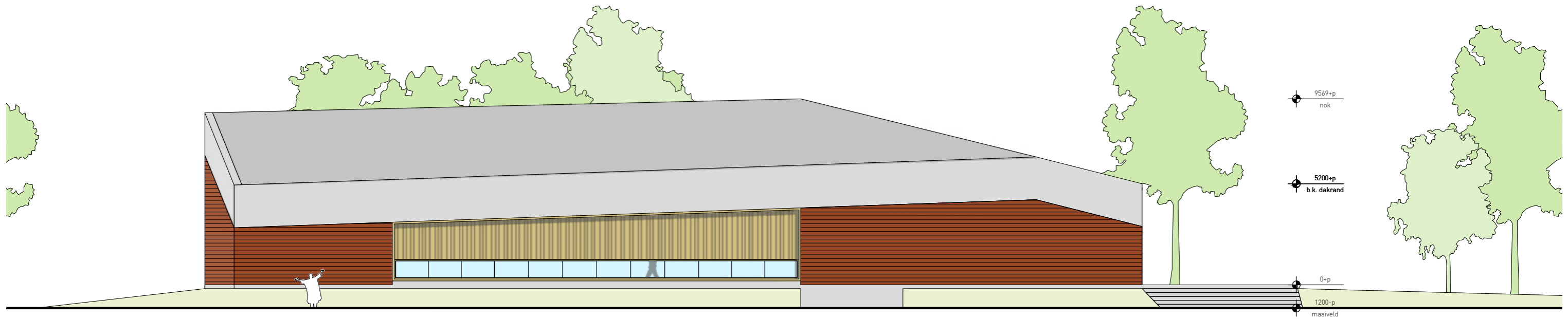
baksteen



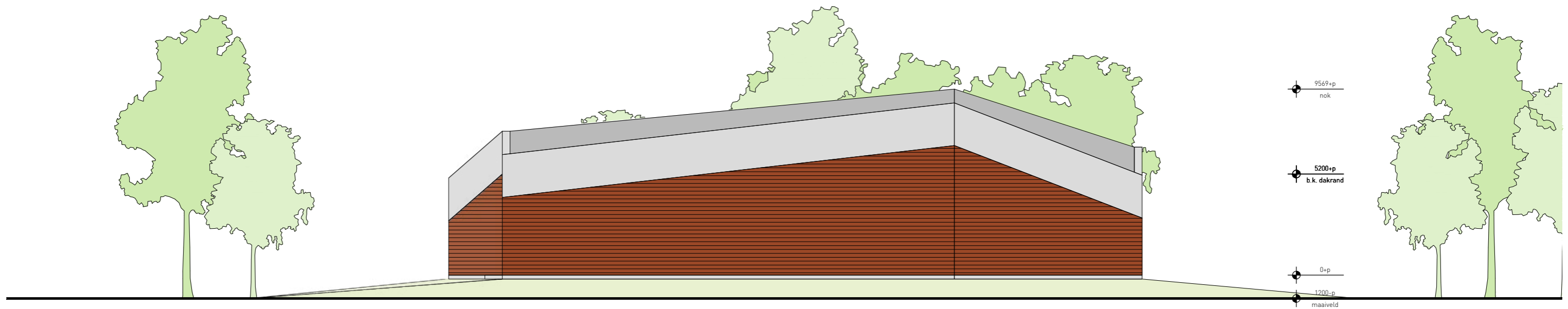
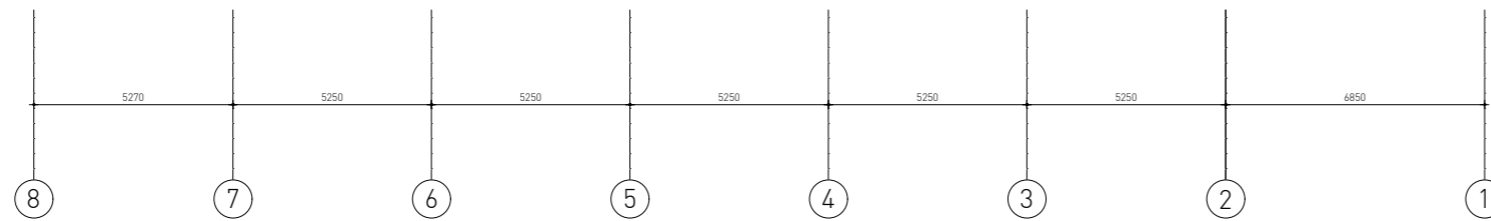
geprofileerde aluminium
beplating & kozijnen



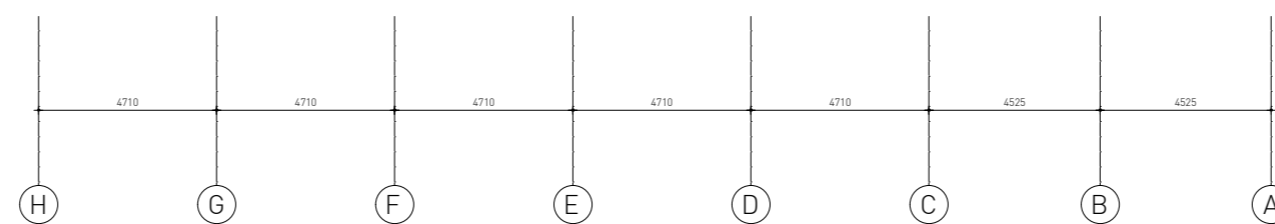


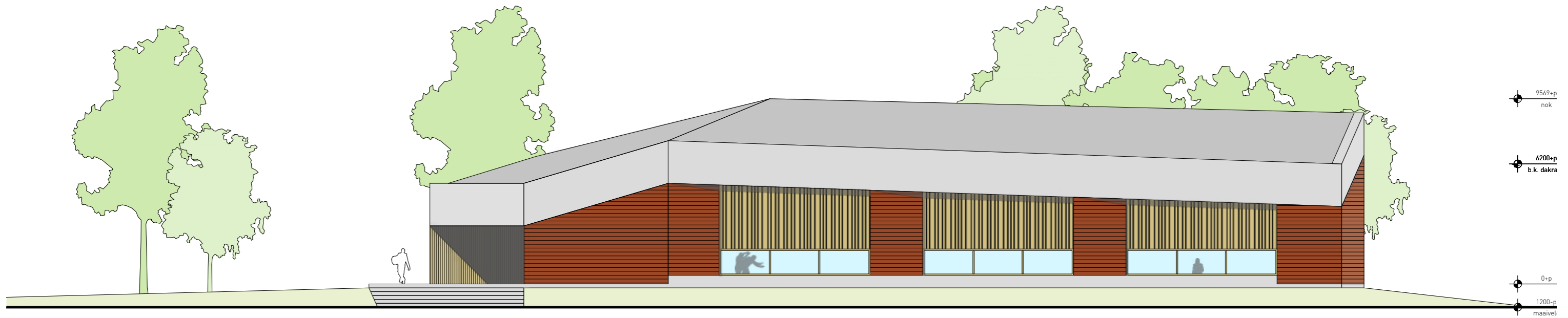


westgevel

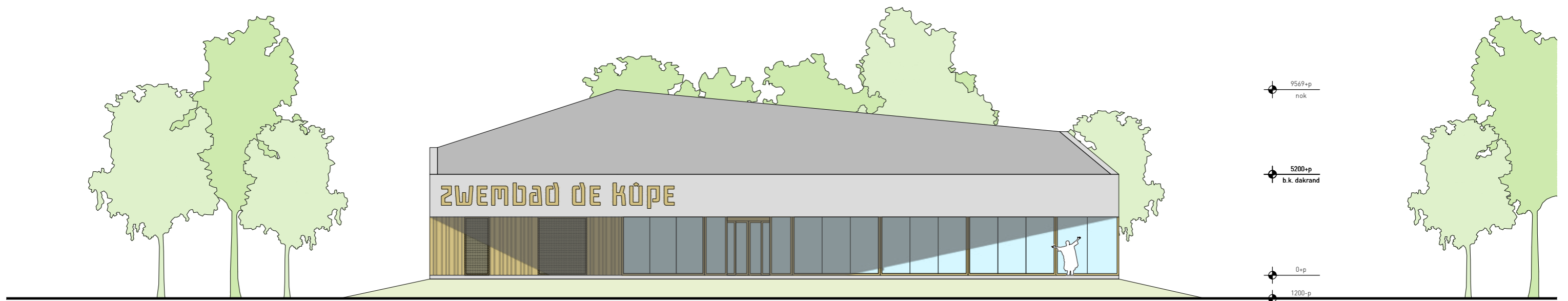
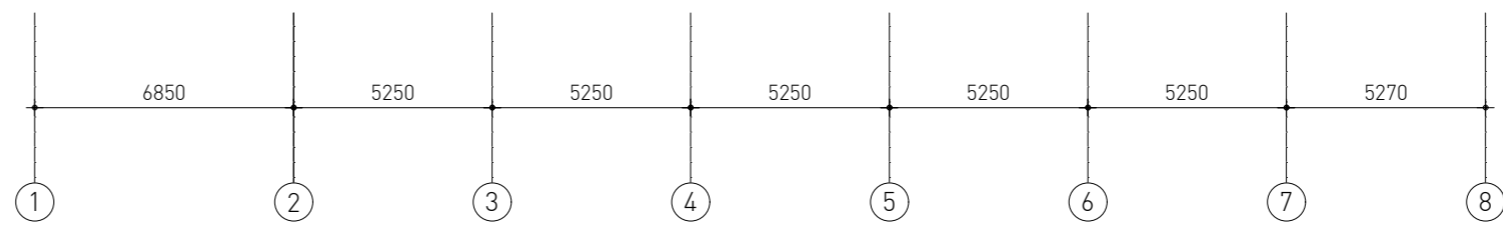


noordgevel

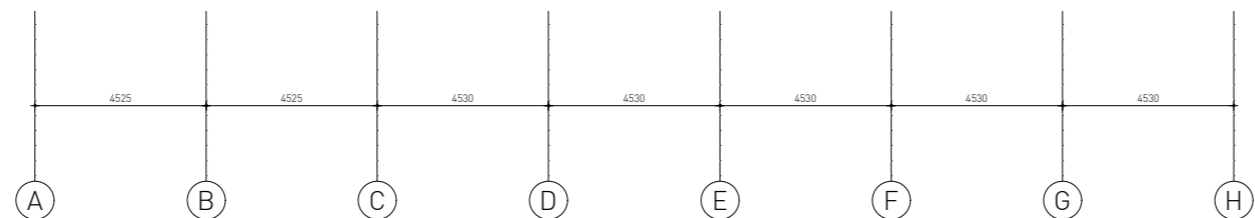




oostgevel



zuidgevel







ENTREE VANUIT KUIPERSWEG



ZWEMZAAL ZIJDE VANUIT KUIPERSWEG



Lignatur dak



Houten liggers en kolommen



Lignotrend wandbekleding



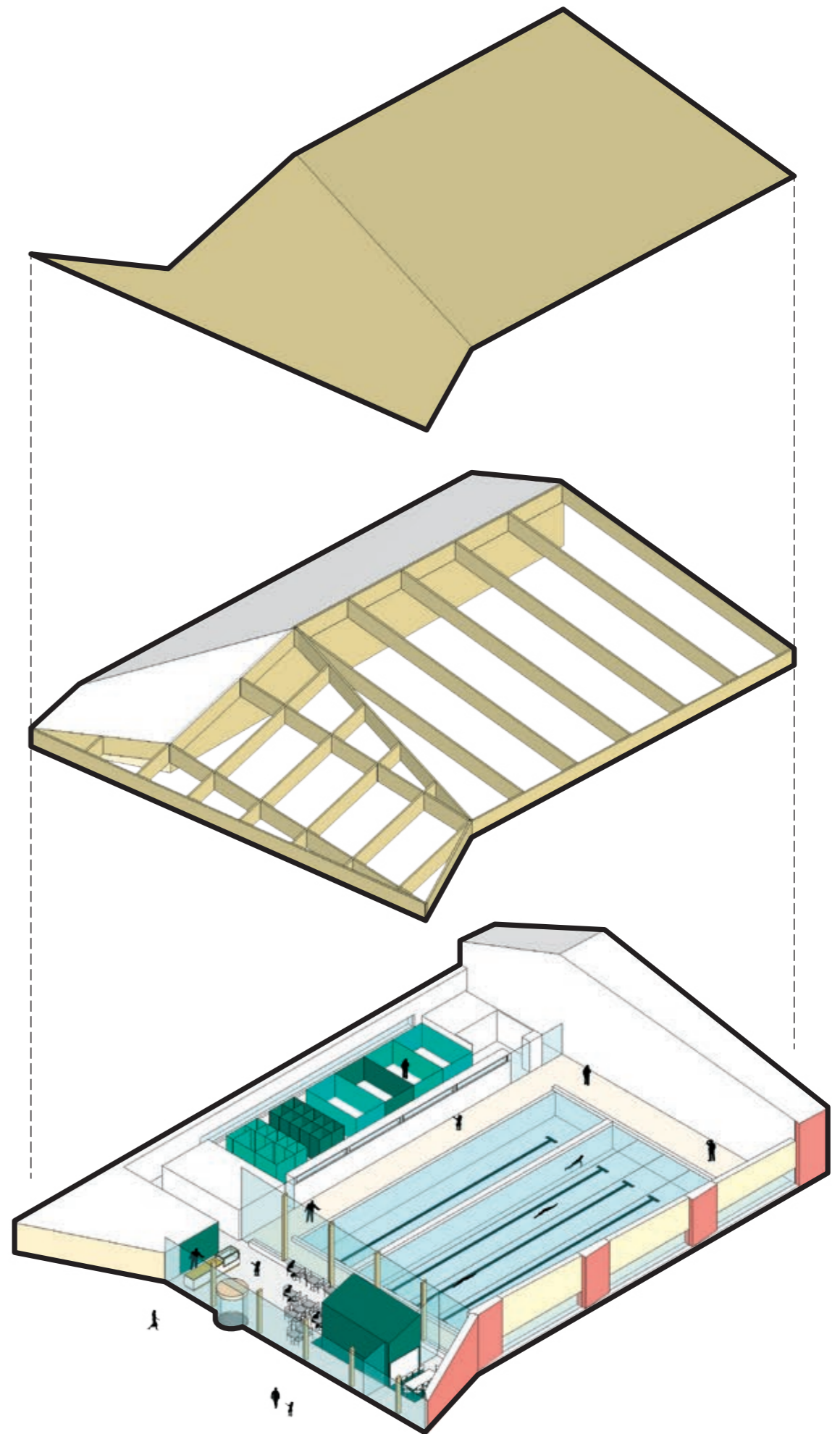
witte wandtegels

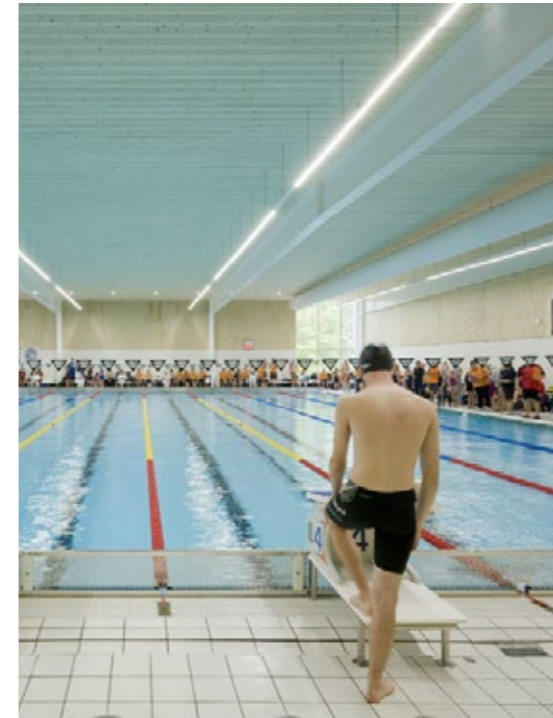


Buchtal Valley tegel sandbeige

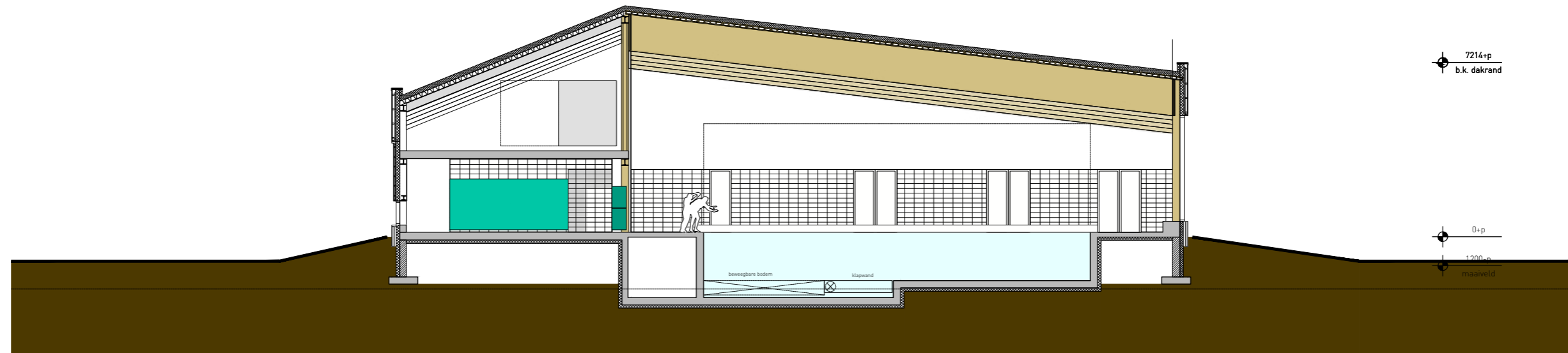


accentkleur

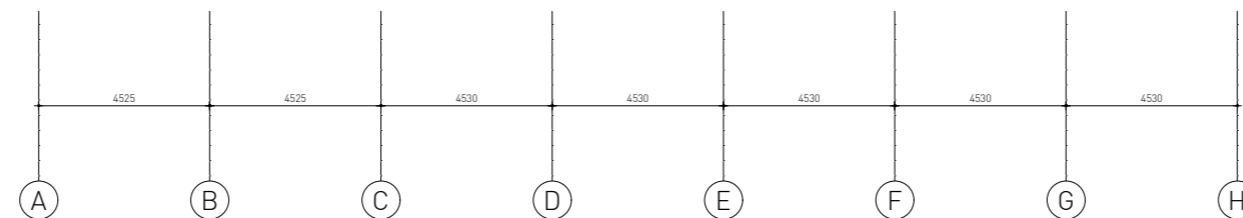


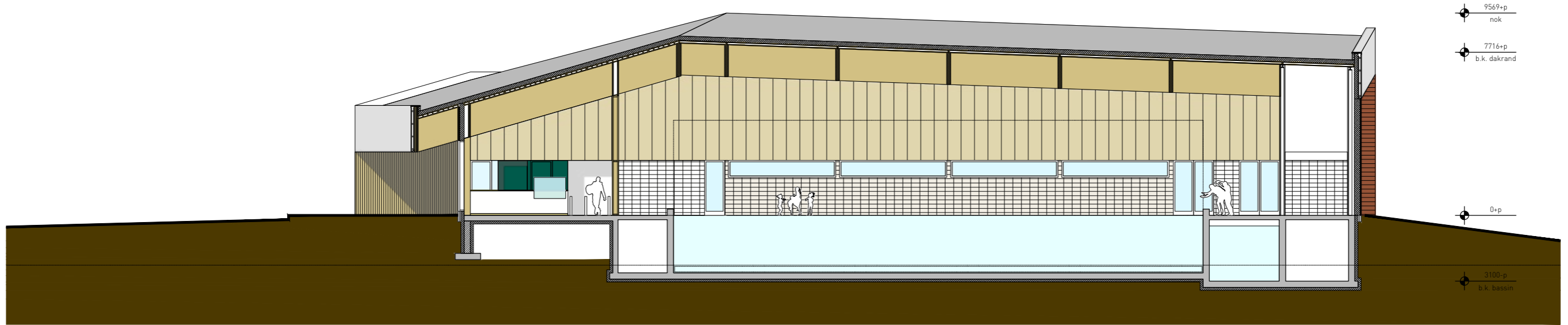


Warm en modern interieur met veel daglicht

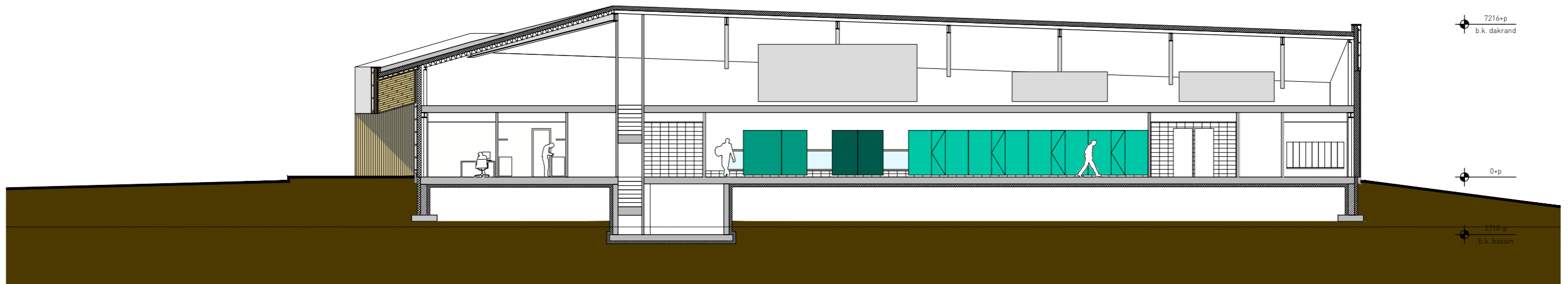
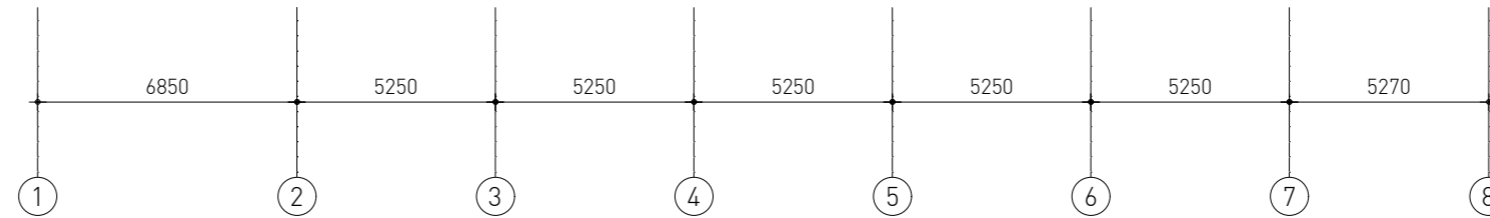


doorsnede 3

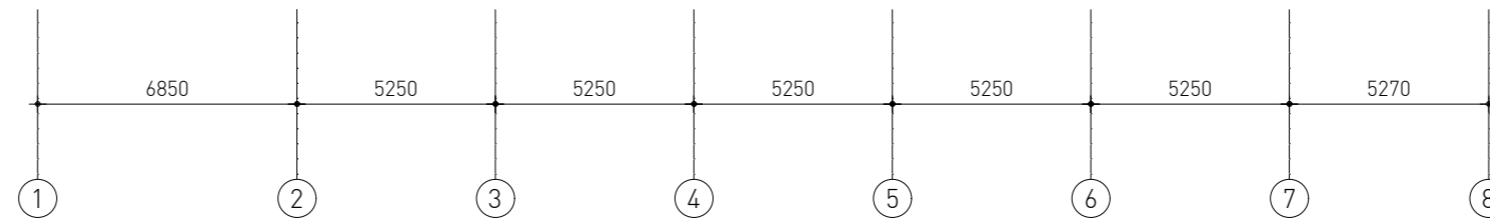




doorsnede 1



doorsnede 2







Swammerdamweg 11
3401 MP IJsselstein

T +31(0)30 6888044
F +31(0)30 6886974

E contact@slangenkoenis.nl
I www.slangenkoenis.nl

