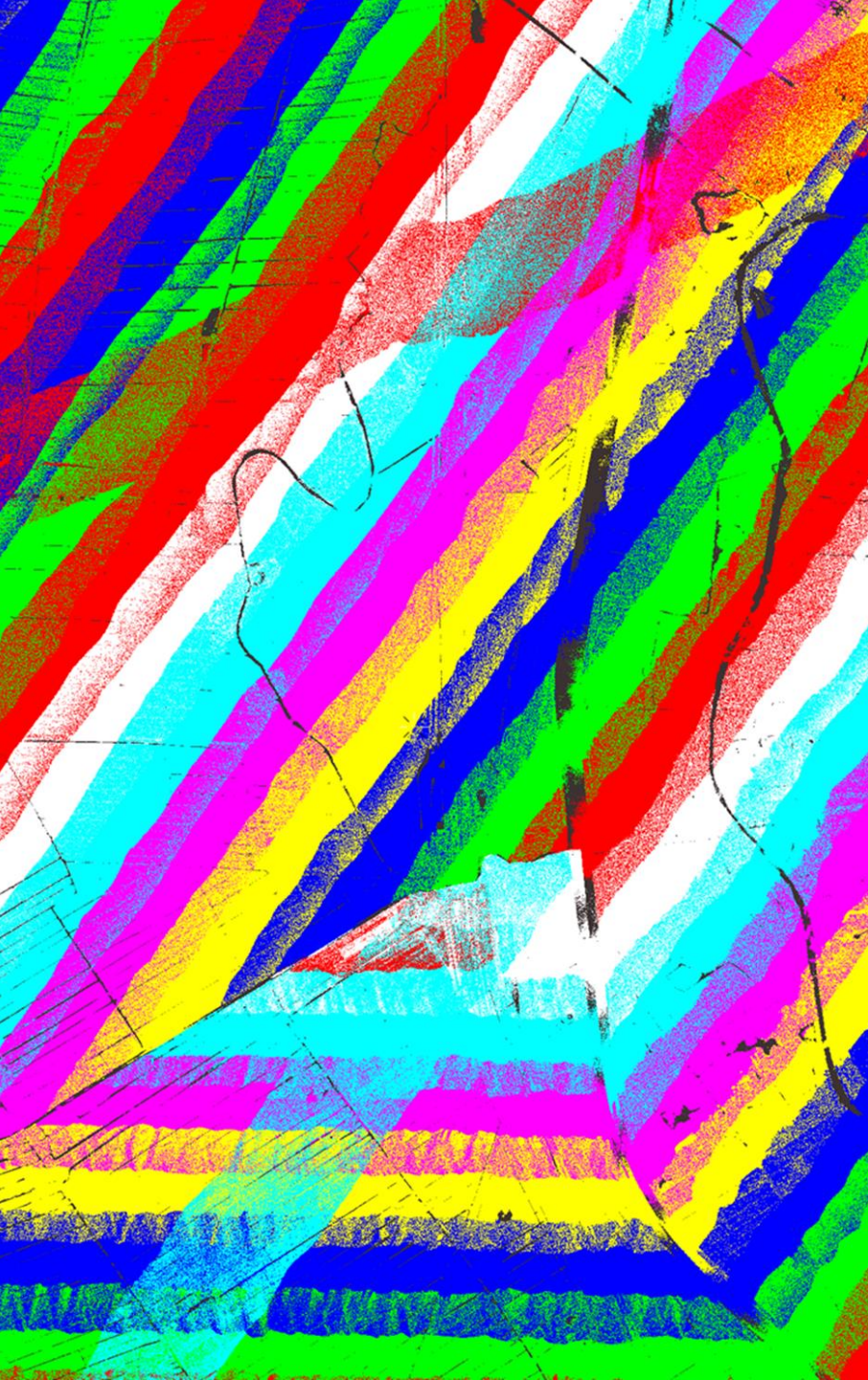




# Bodembeweging





# Hoogteverschilanalyse tussen AHN3 en AHN4.

Niels Treffers

**GEO**DELTA



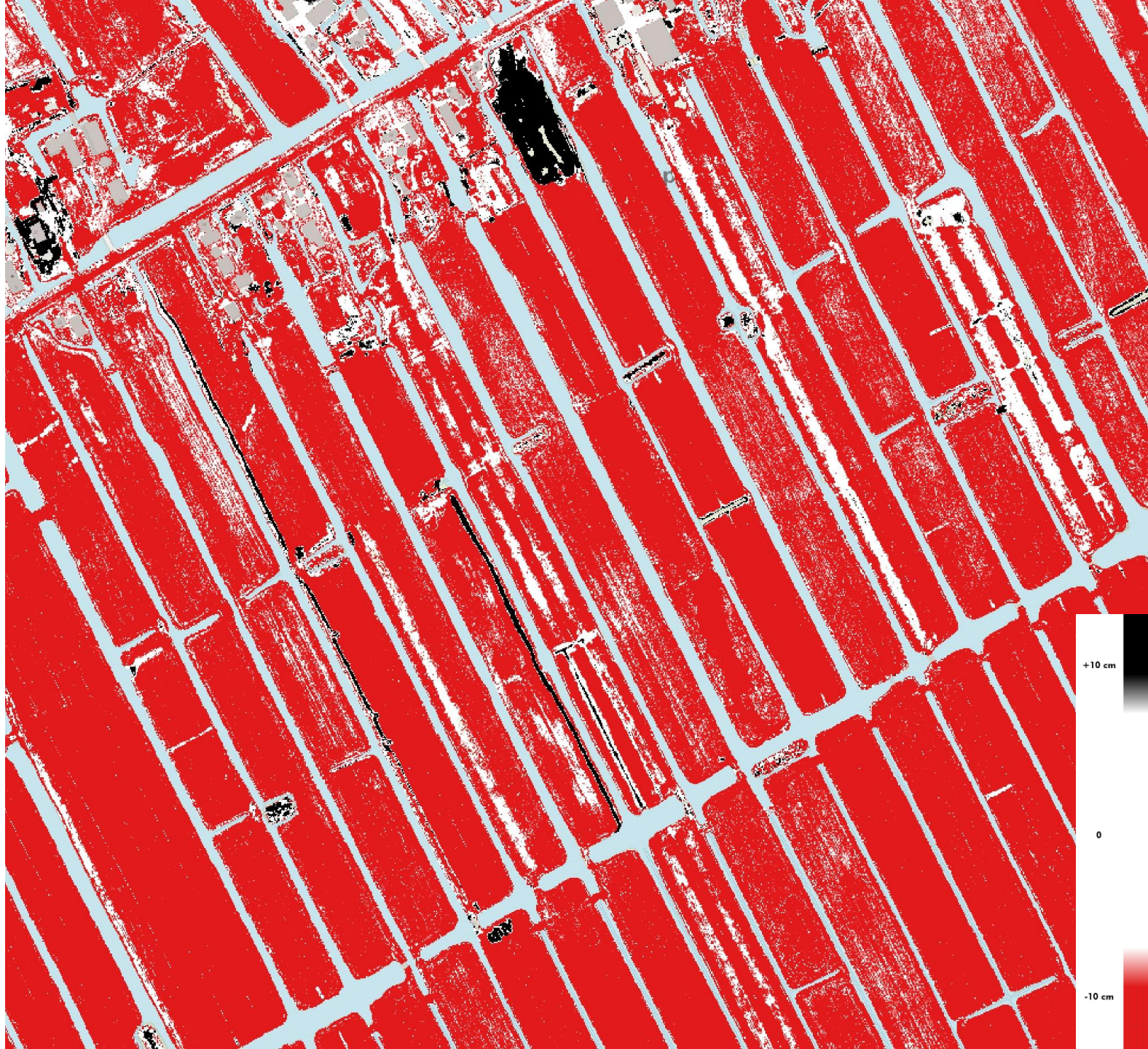
# Teckop

► Topo



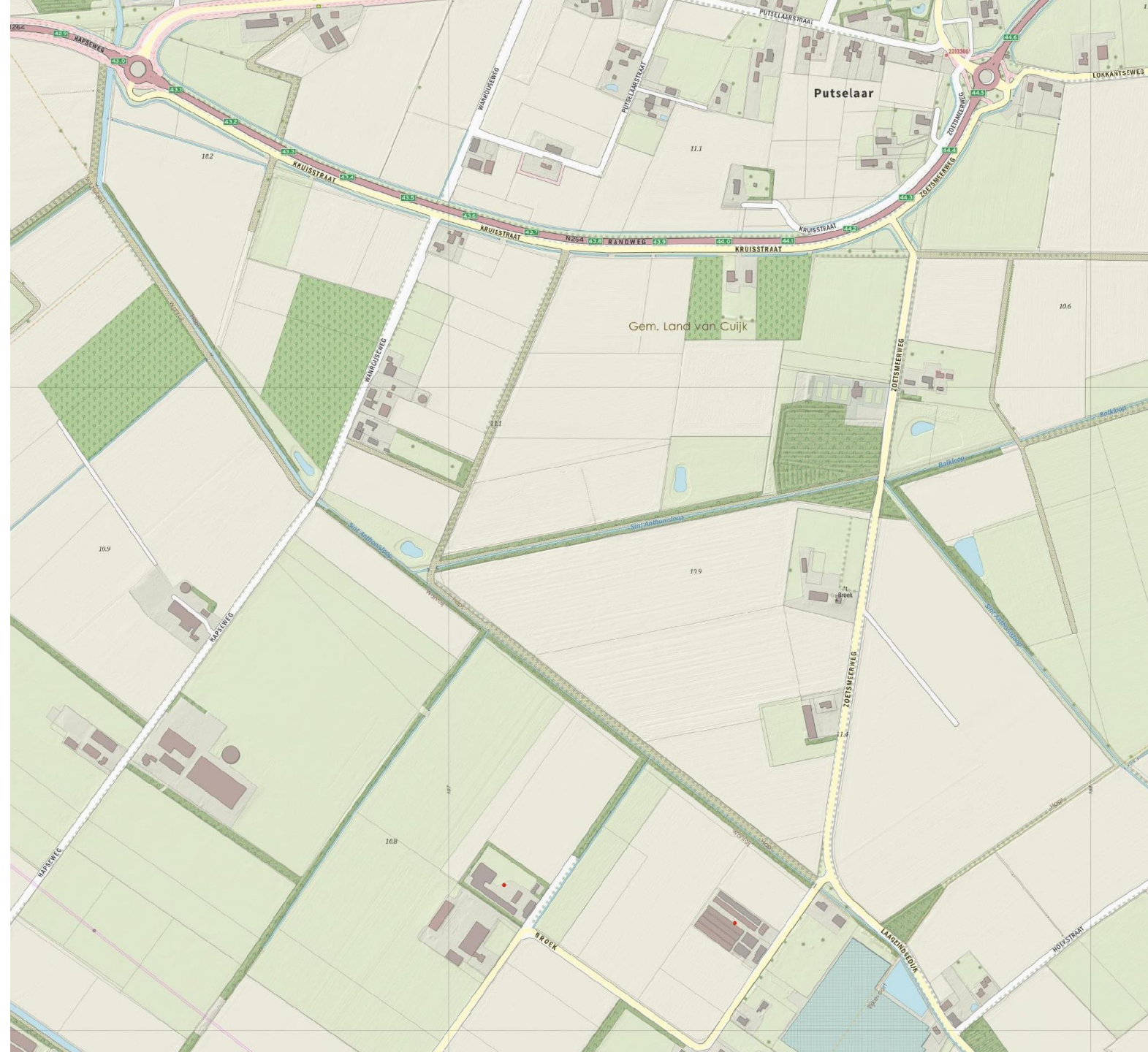
# Teckop

▶ AHN4-AHN3



# Putseelaar

► Topo



# Putsehaar

▶ AHN4-AHN3



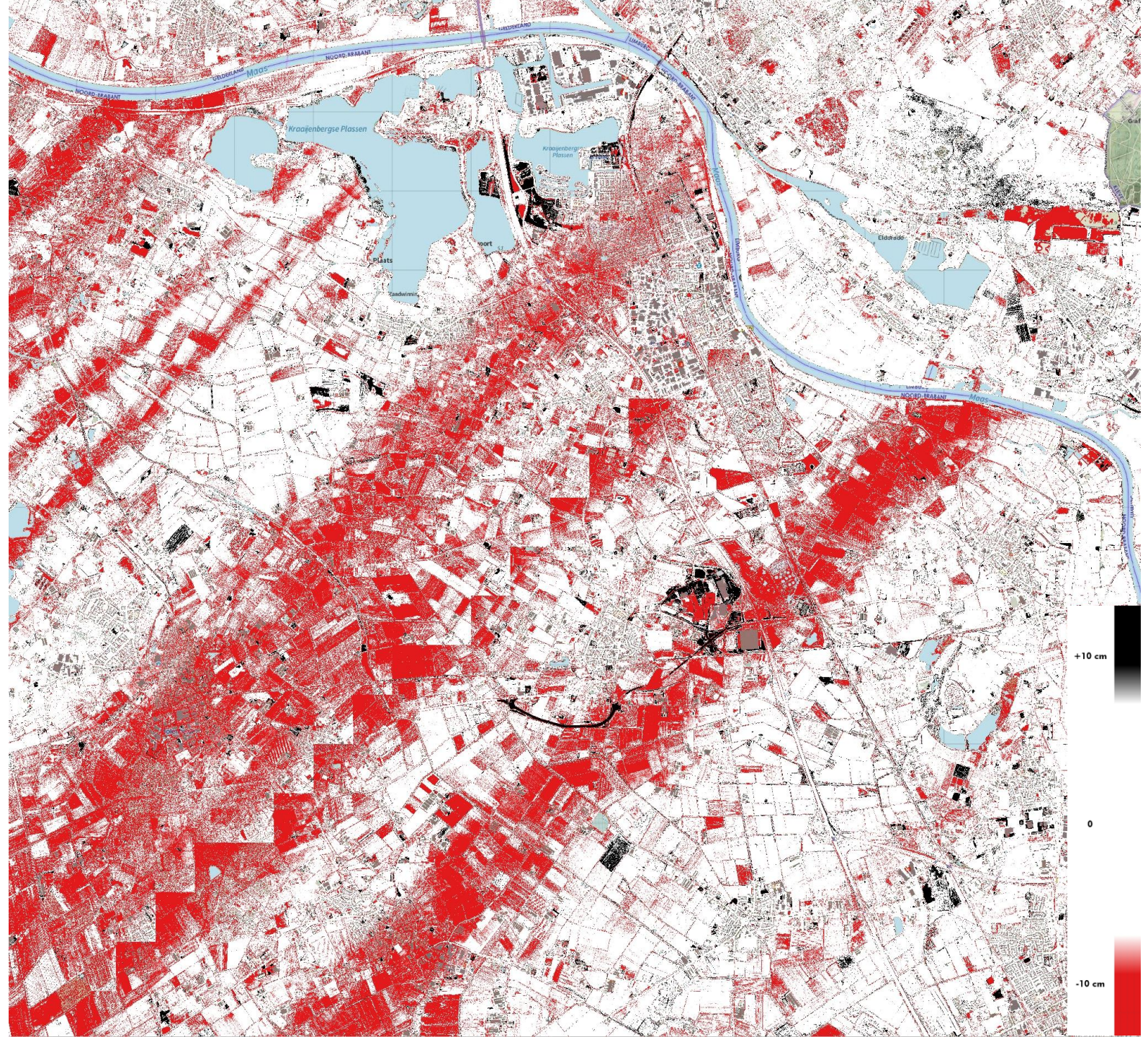
# Omgeving Putselaar

► Topo



# Omgeving Putselaar

▶ AHN4-AHN3





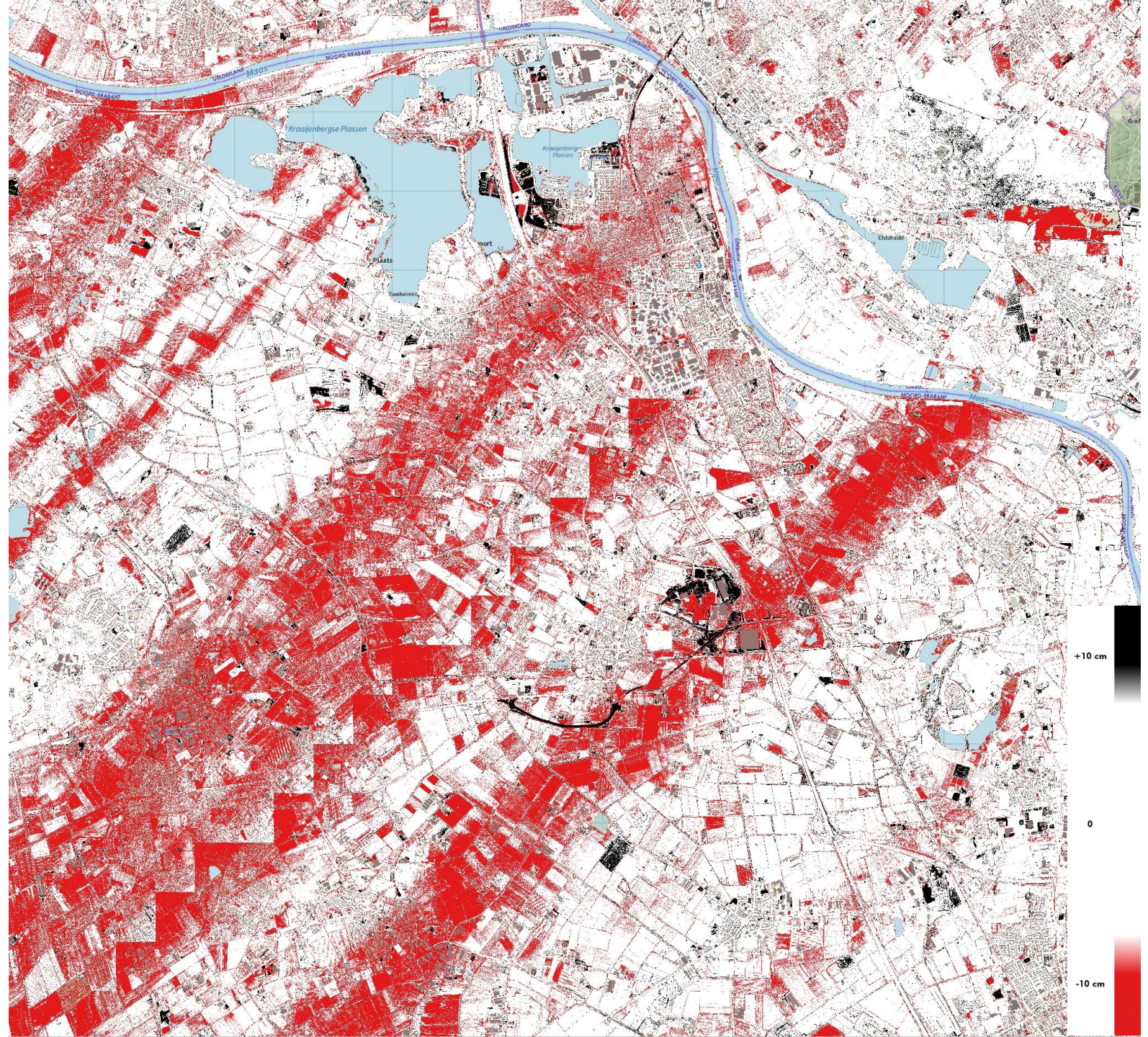
# Omgeving Putselaar

▶ AHN3 Stroken



# Omgeving Putselaar

▶ AHN4-AHN3



# Randvoorwaarde absolute hoogte AHN

- ▶ De absolute hoogteafwijkingen per referentie-object voldoen aan de volgende eis:
  - $68,2\% < 1 * \sigma_z + DZ$
  - $95,4\% < 2 * \sigma_z + DZ$
  - $99,7\% < 3 * \sigma_z + DZ$
- ▶ 10 cm fout in hoogte is mogelijk
- ▶ 20 cm fout in hoogteverschil is mogelijk

# Putseelaar

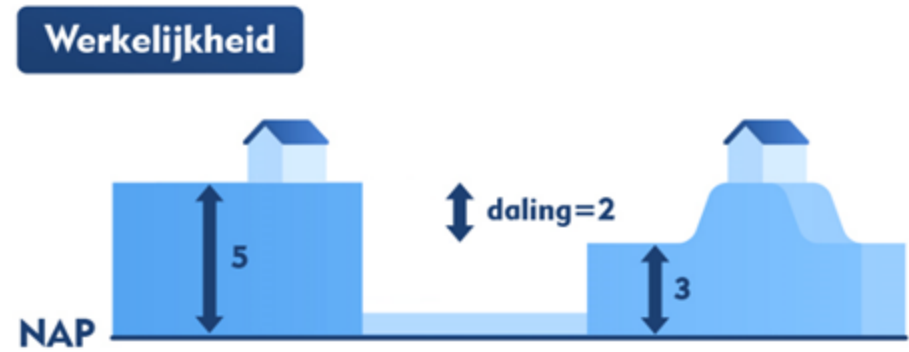
▶ AHN4-AHN3



# Noklijnen van zadeldaken



# Schranken



# Schranken

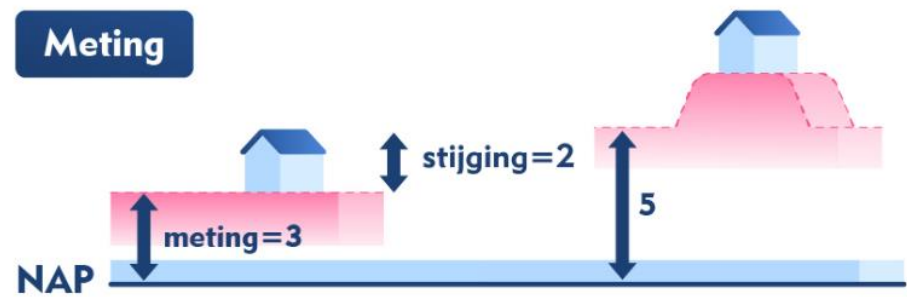


# Schranken

## Werkelijkheid



## Meting

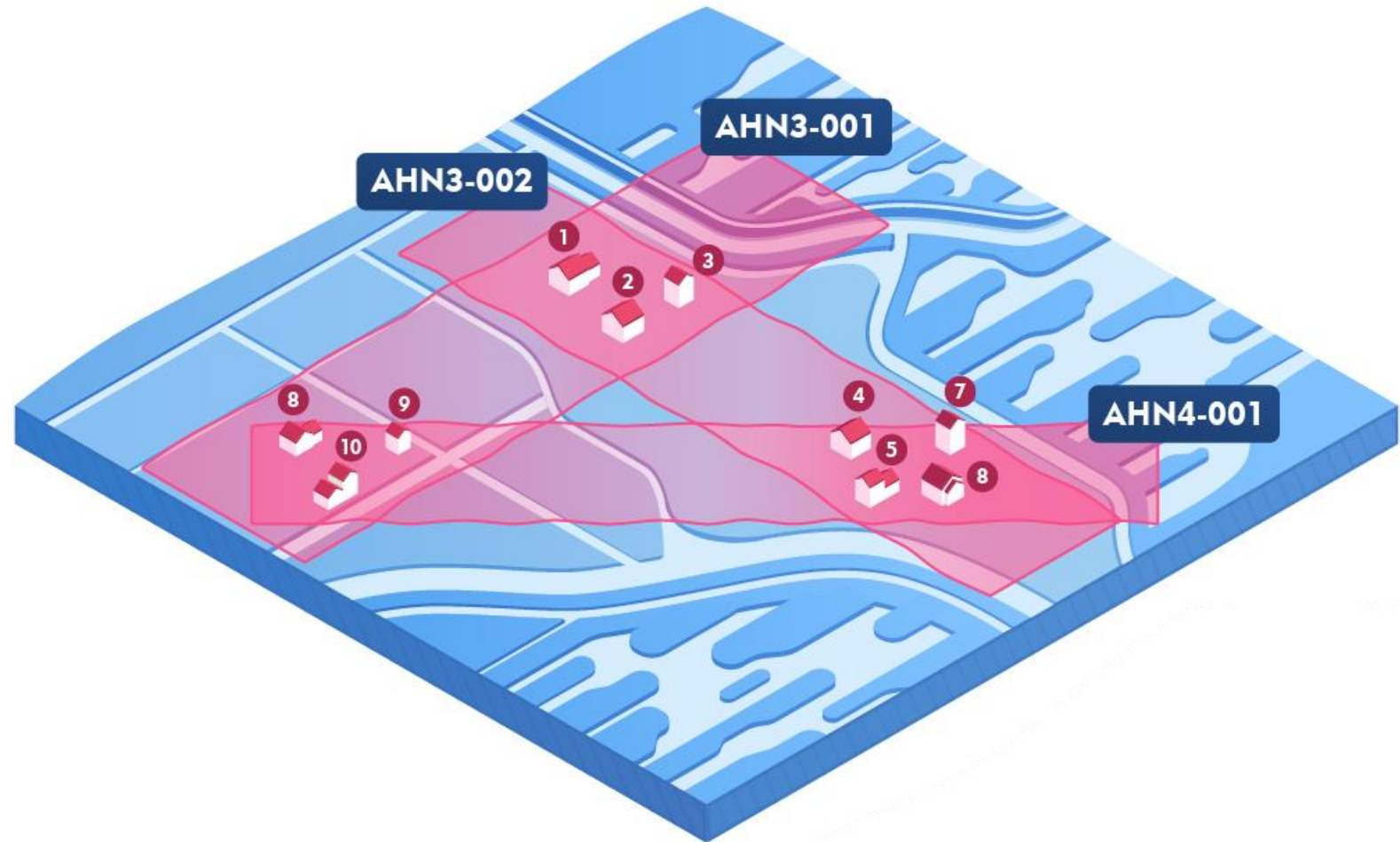
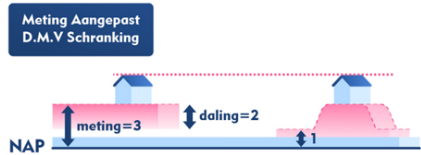
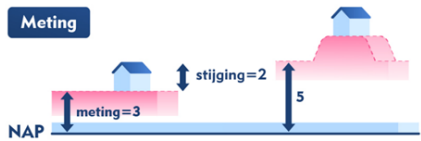
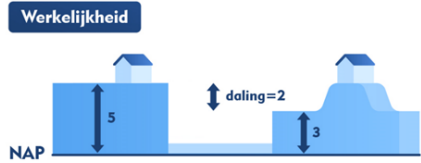


## Meting Aangepast D.M.V Schranking





# Vereffening

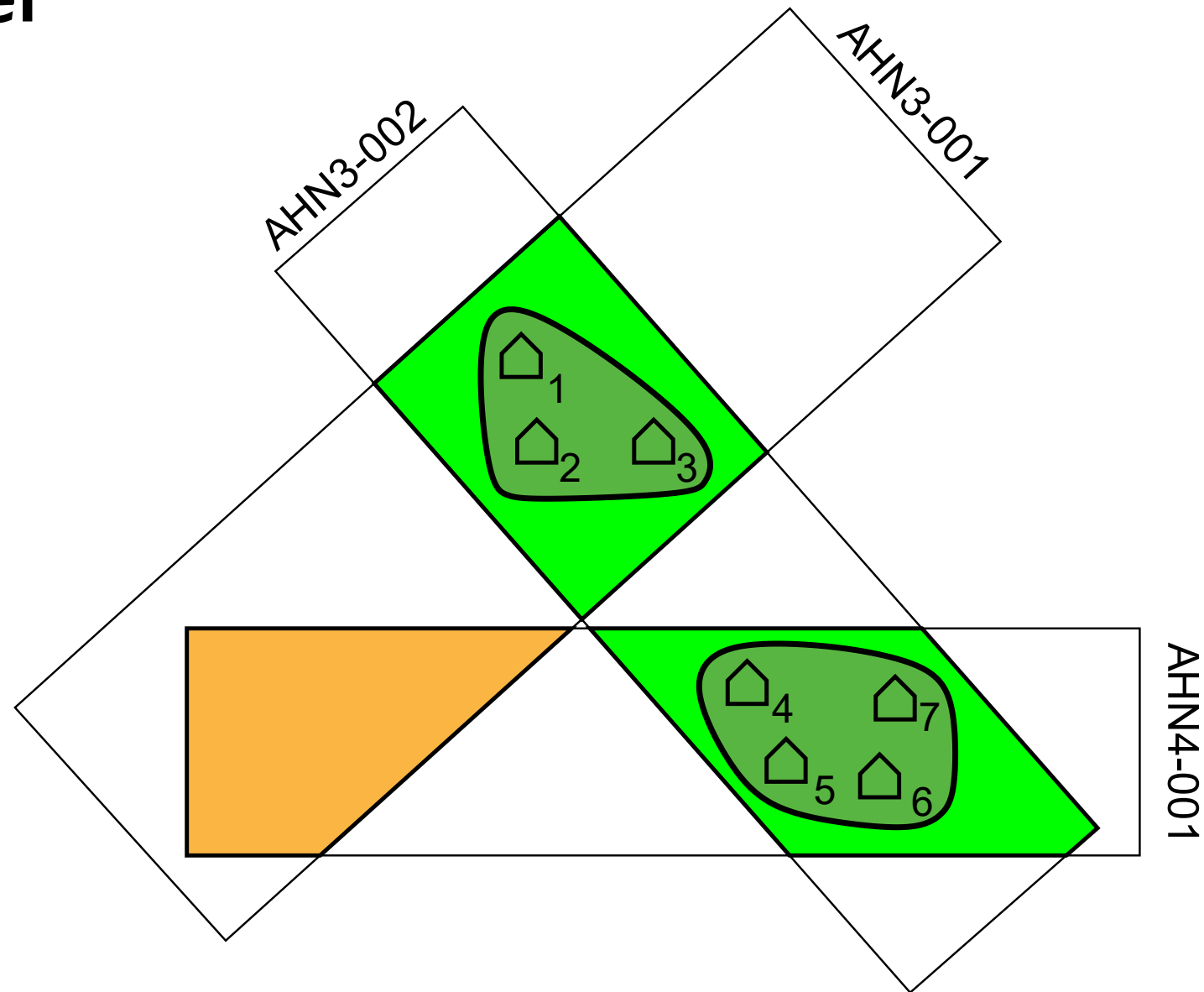




# Gedachtenpuntjes

- Zadeldaken zijn stabiel
  - Diepe bodemdaling
- 1 correctie per overlapgebiedje
- Er wordt gewerkt op het land
- Er blijft een ruisfactor

# Confidence level



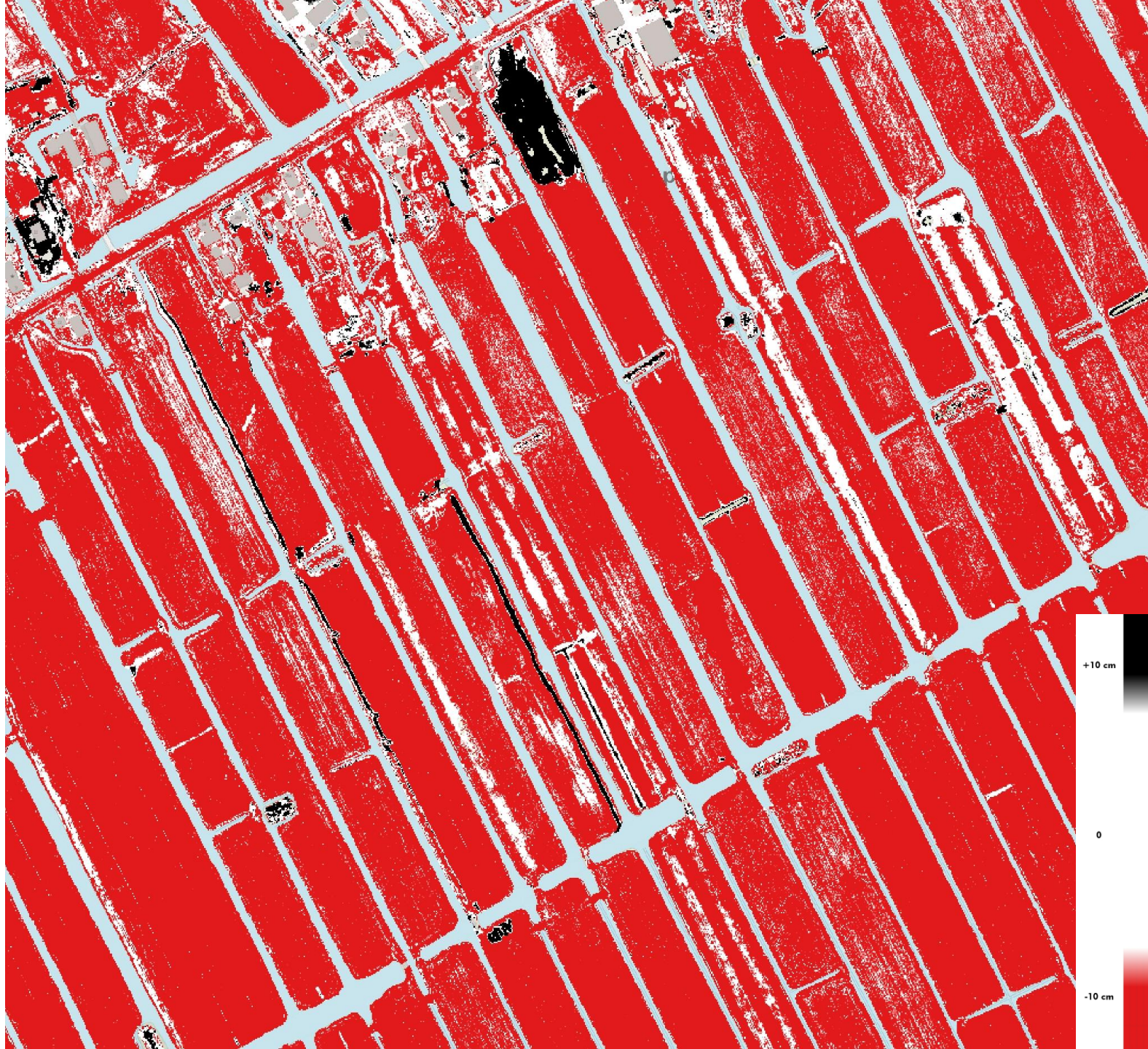
# Teckop

► Topo



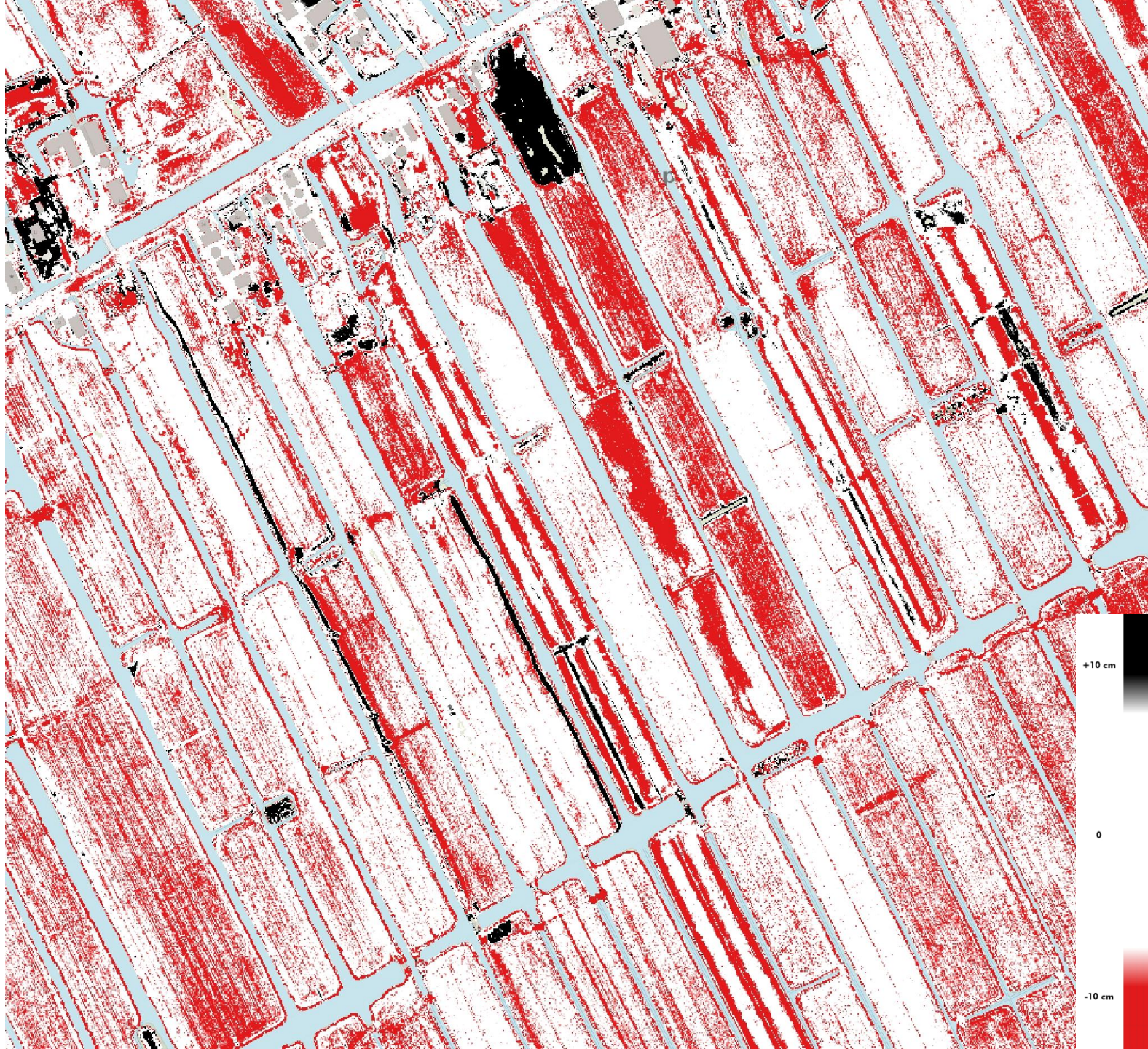
# Teckop

▶ AHN4-AHN3



# Teckop

► Vereffend

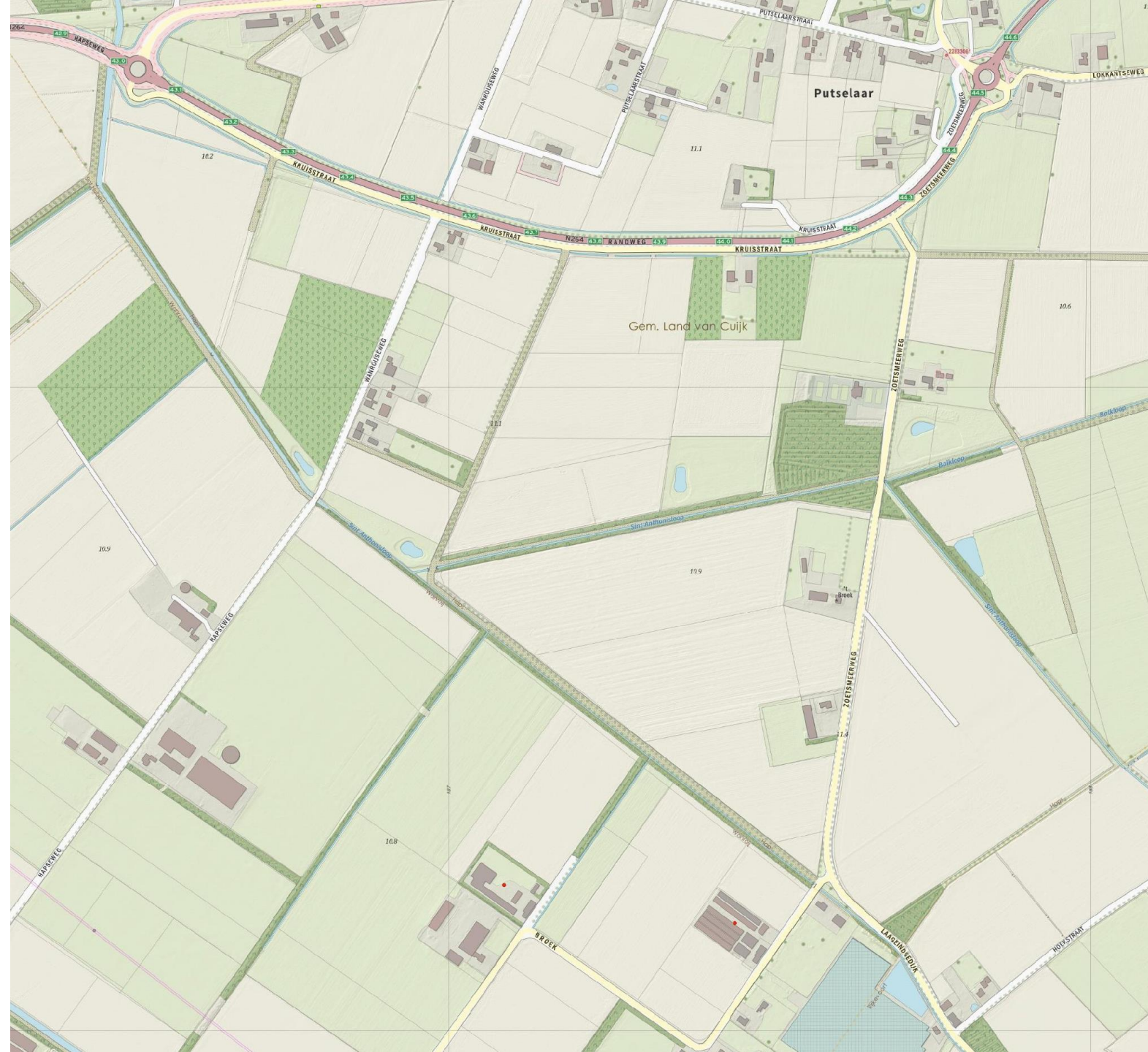


# Teckop

▶ Confidence

# Putseelaar

► Topo





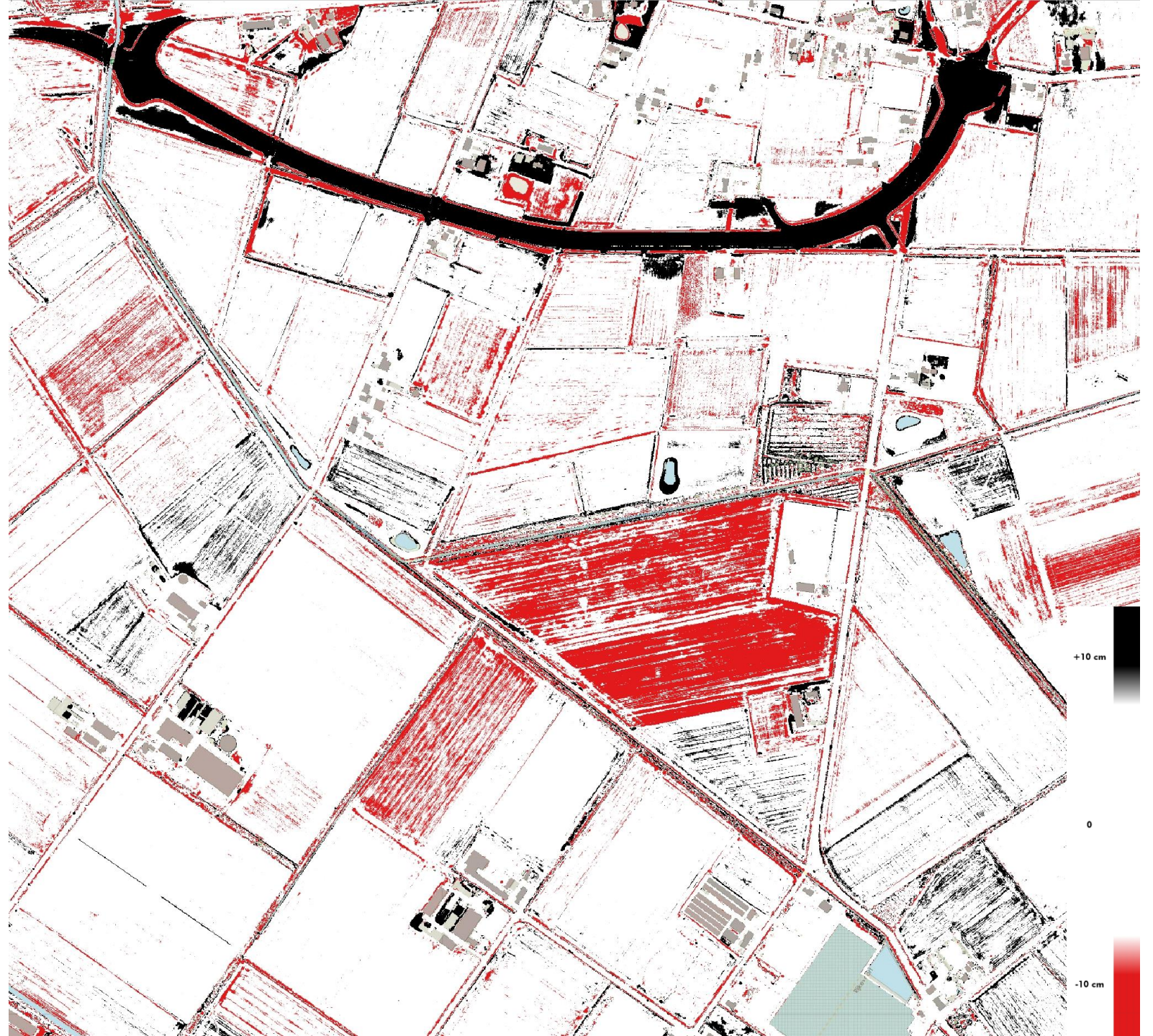
# Putseelaar

▶ AHN4-AHN3



# Putseelaar

► Vereffend



# Putselaar

▶ Confidence

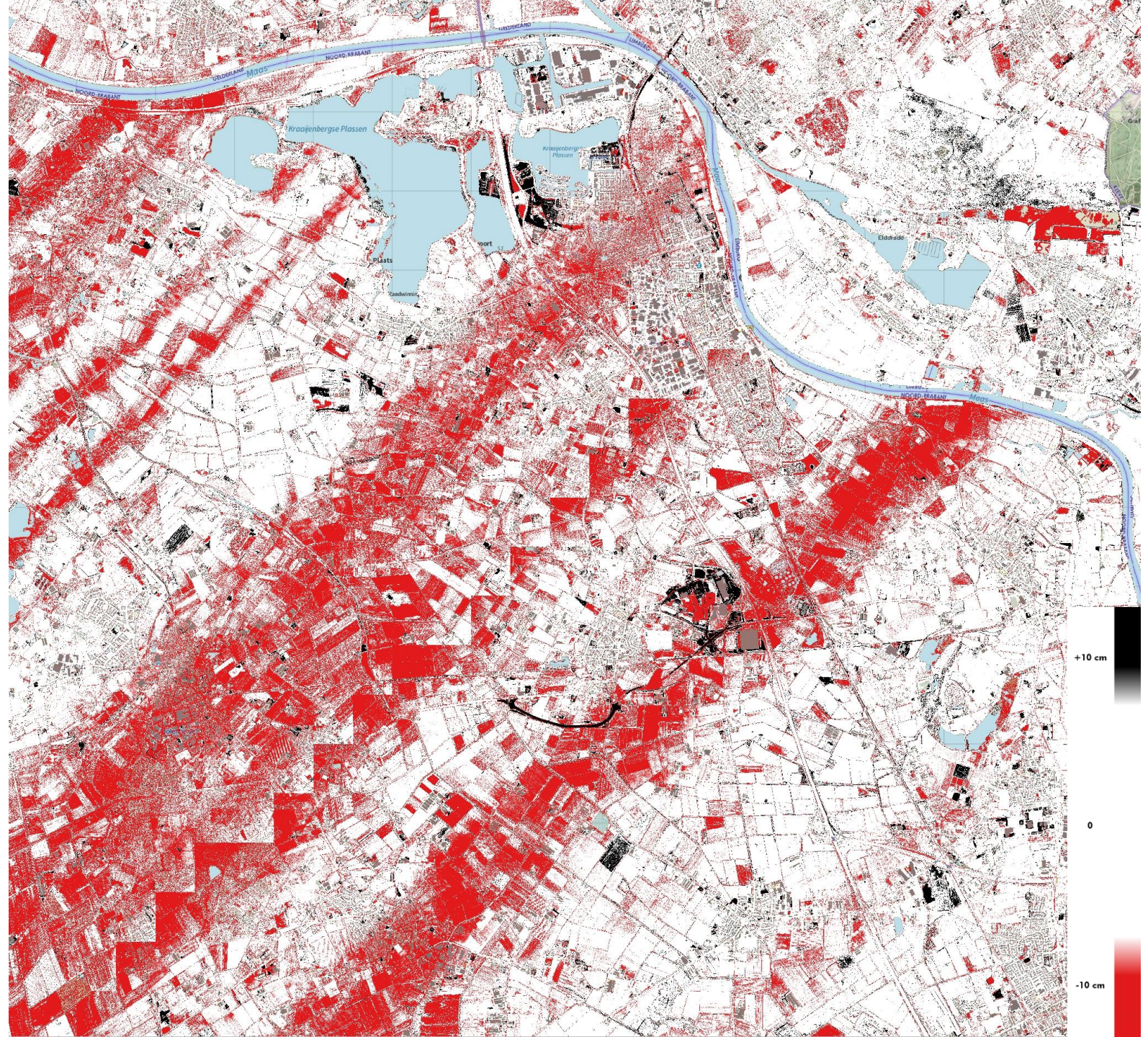
# Omgeving Putselaar

► Topo



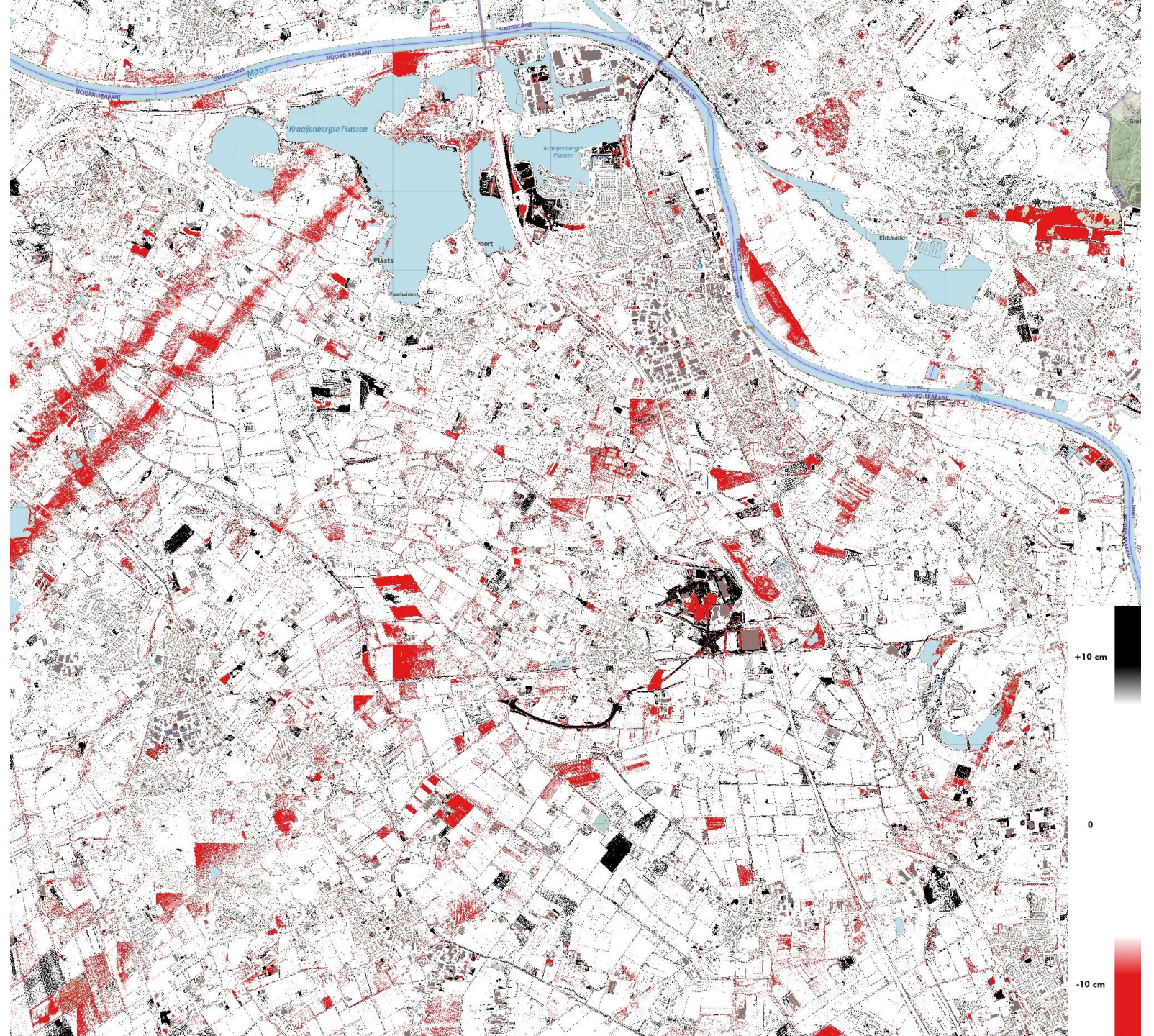
# Omgeving Putselaar

▶ AHN4-AHN3



# Omgeving Putselaar

► Vereffend



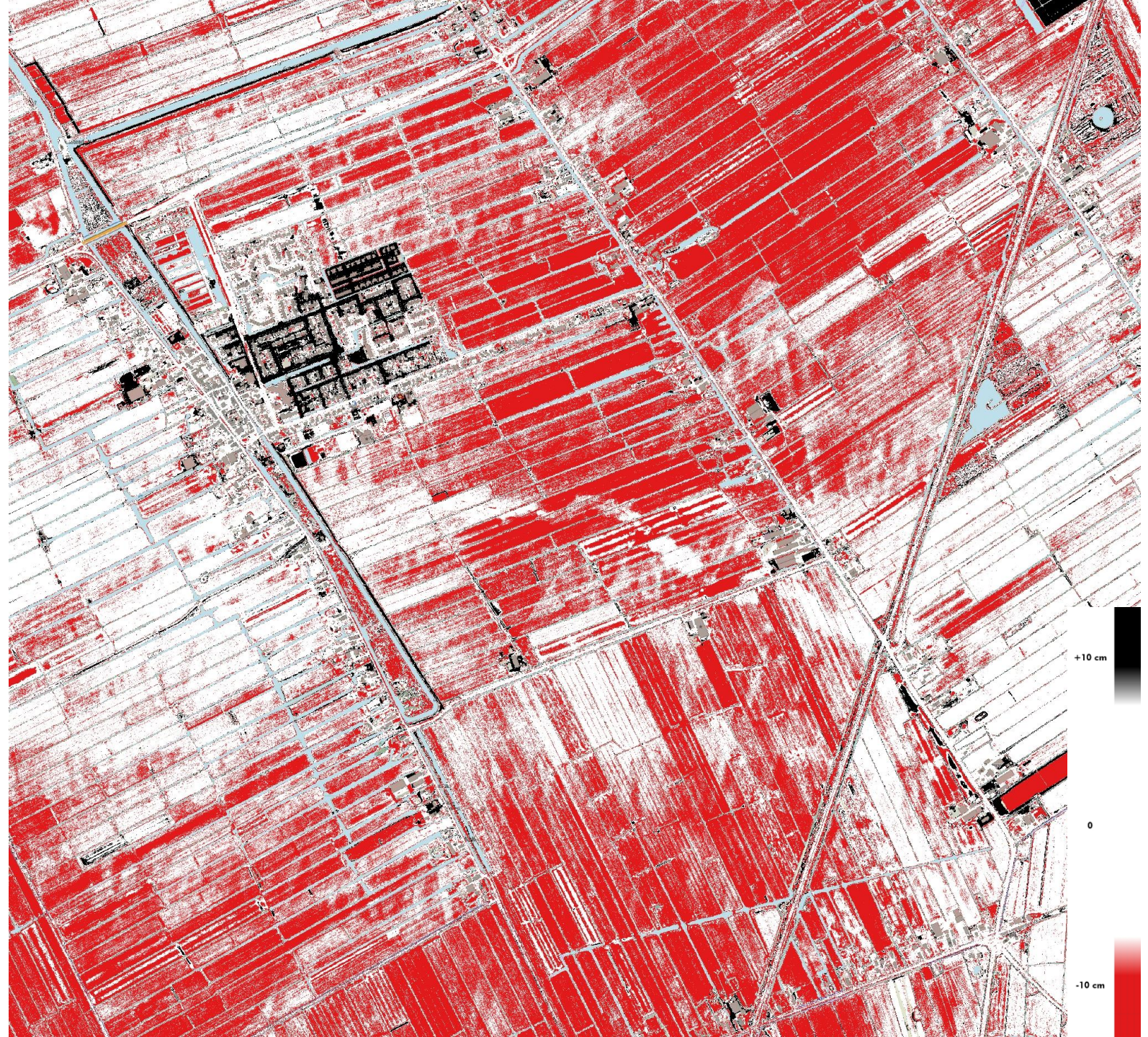
# Kockengen

► Topo



# Kockengen

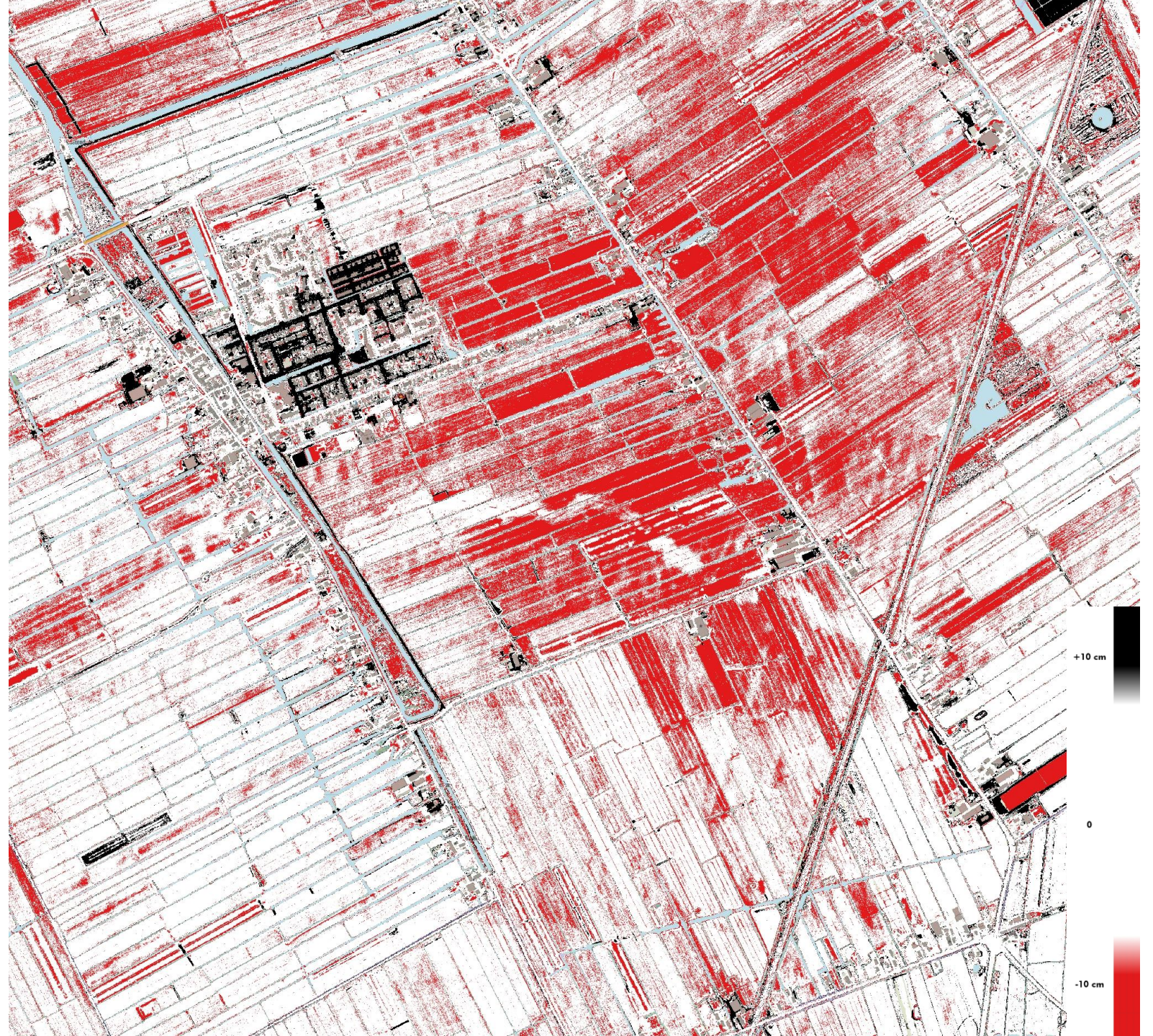
▶ AHN4-AHN3





# Kockengen

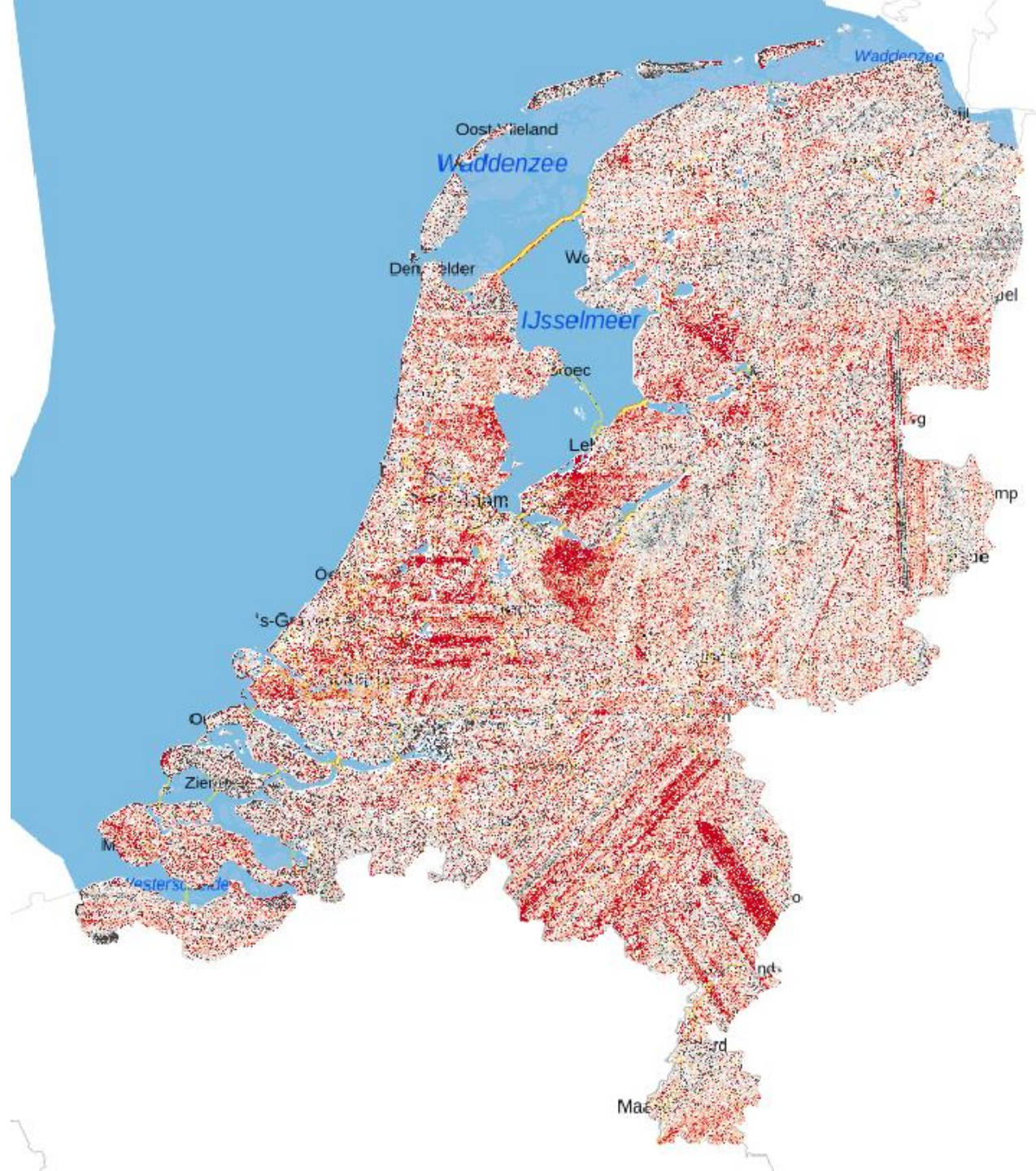
► Vereffend



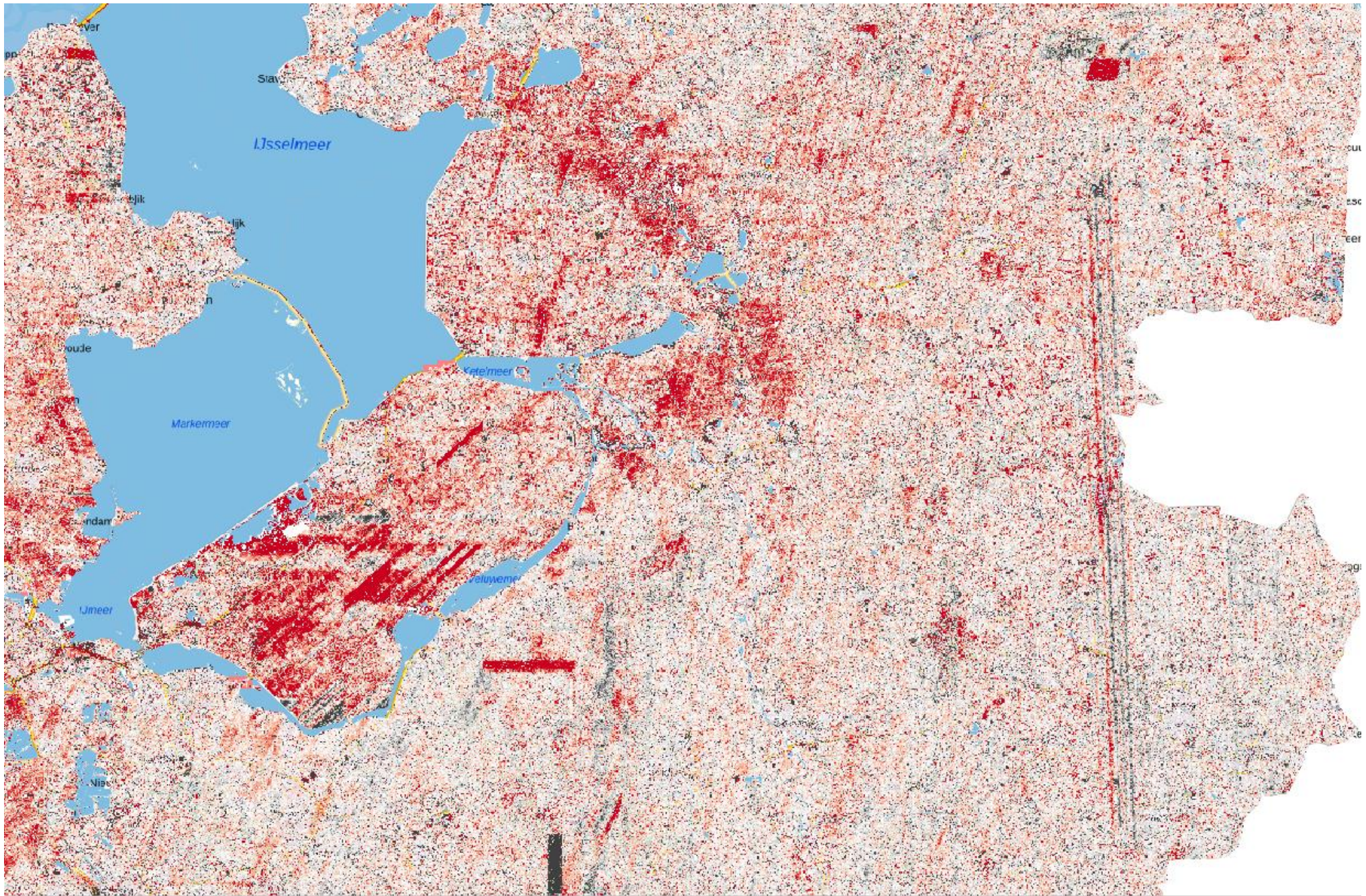


# Landsdekkend

- Status 9 Mei 2023











# Veilig gebruik

- Diepe bodemdaling
- 1 correctie per overlapgebiedje
- Werk op het land
- Blijven foutjes in zitten

