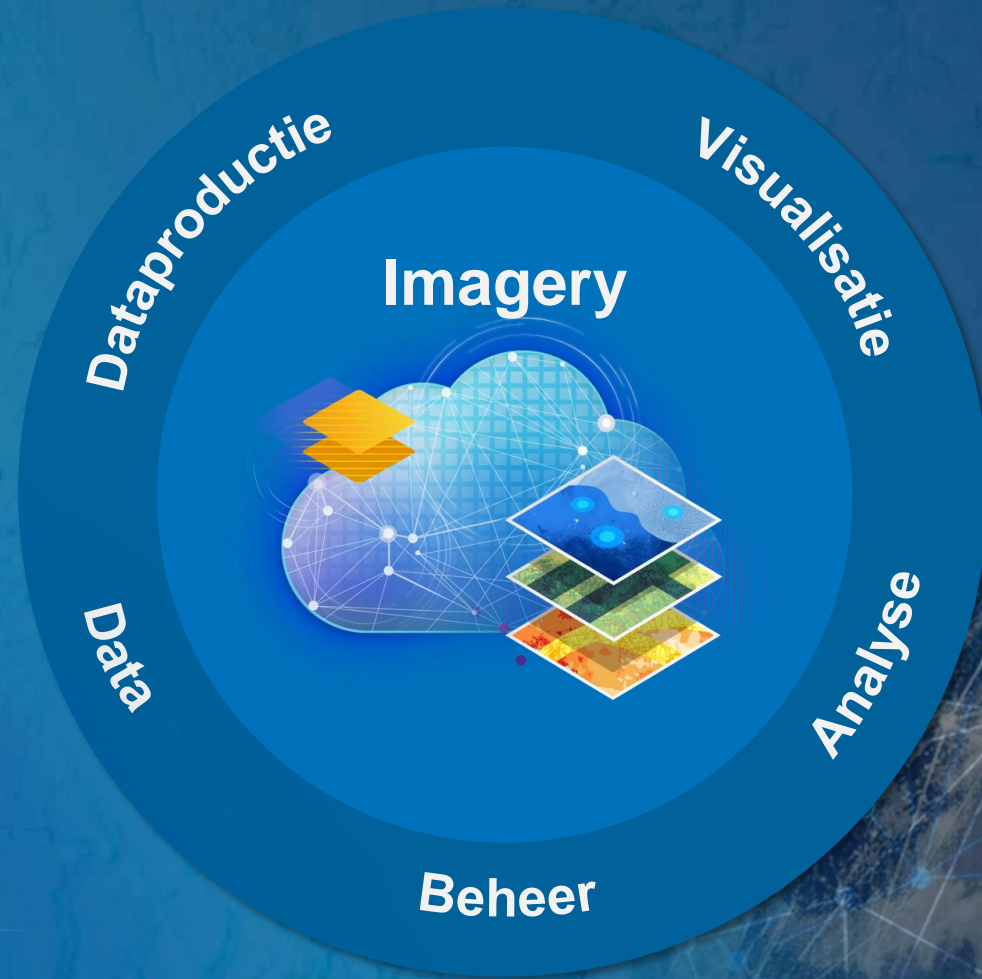




# AHN-BM Congres

Joris Bak – Esri Nederland

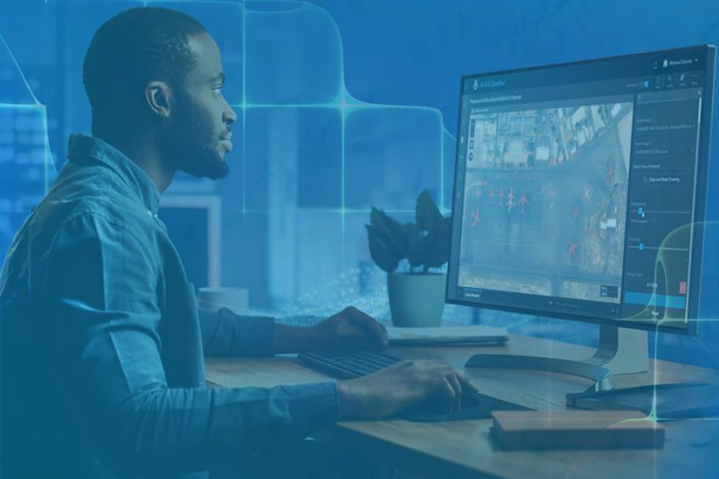
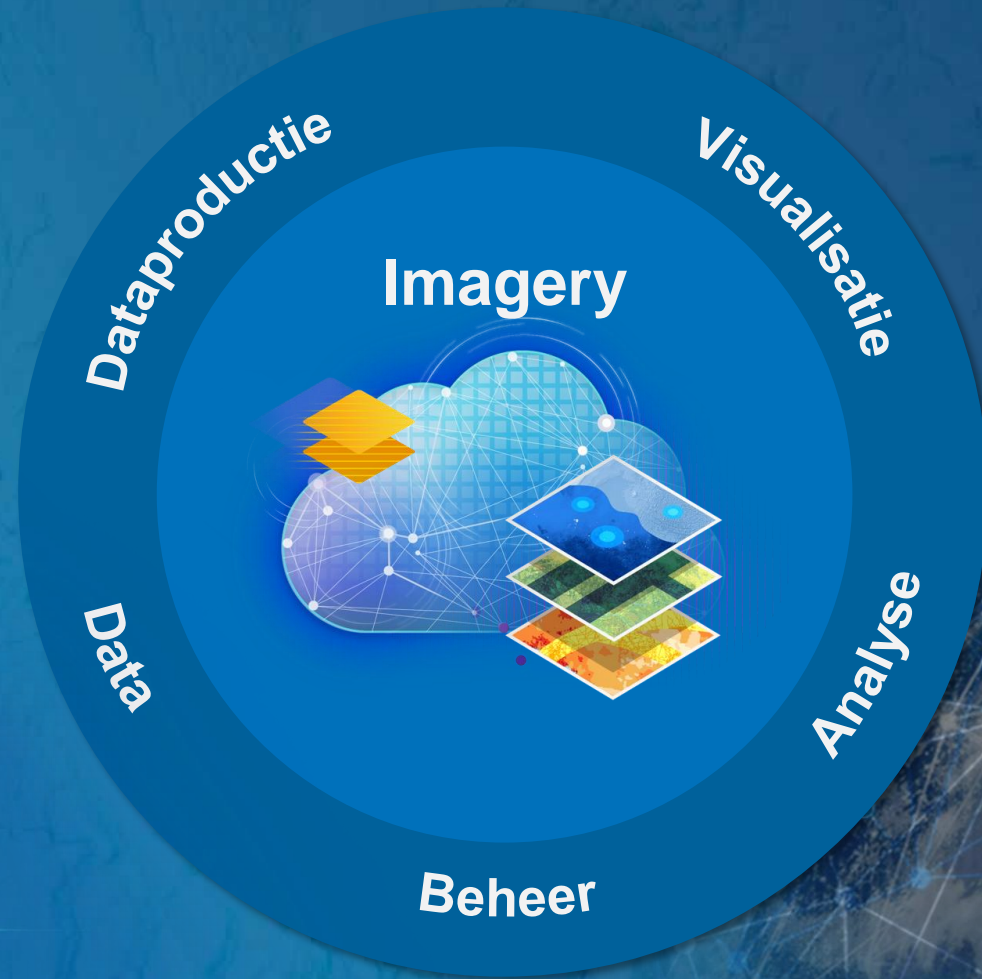
ArcGIS biedt uitgebreide mogelijkheden voor werken met imagery



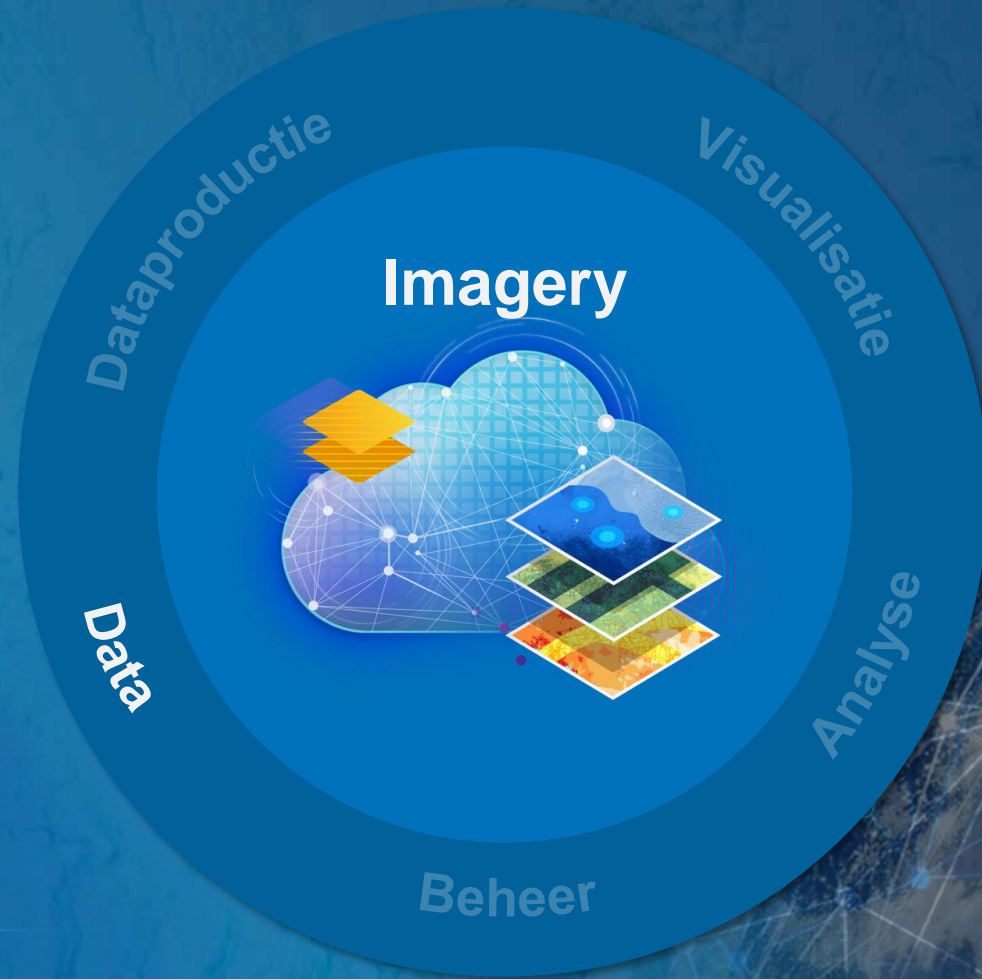
# Esri Sentinel-2 Explorer



ArcGIS biedt uitgebreide mogelijkheden voor werken met imagery

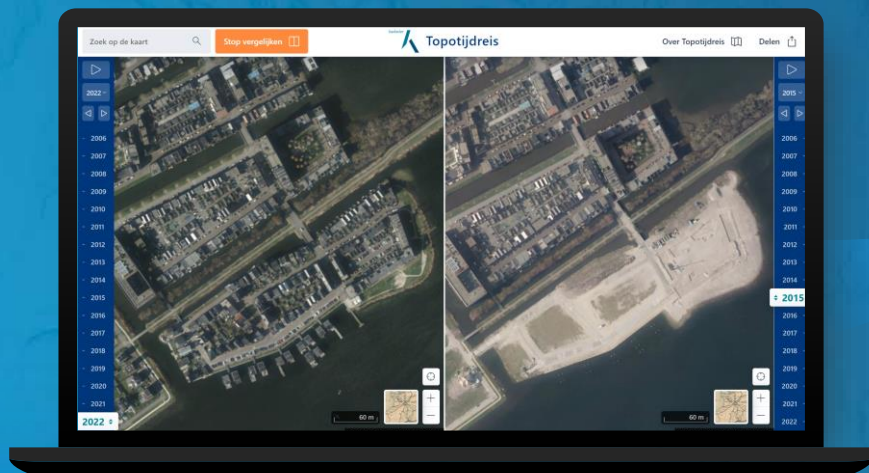


ArcGIS biedt uitgebreide mogelijkheden voor werken met imagery



# Toegang tot een uitgebreide verzameling van imagery

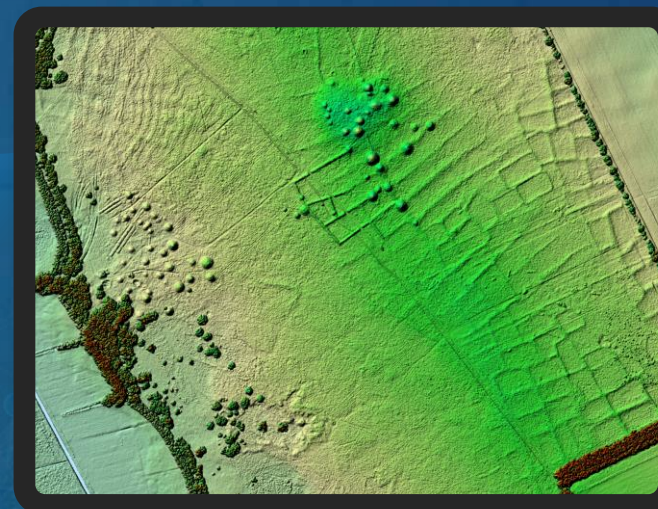
## Imagery



Levende Atlas



Uw eigen imagery  
(on-premises of in de cloud)

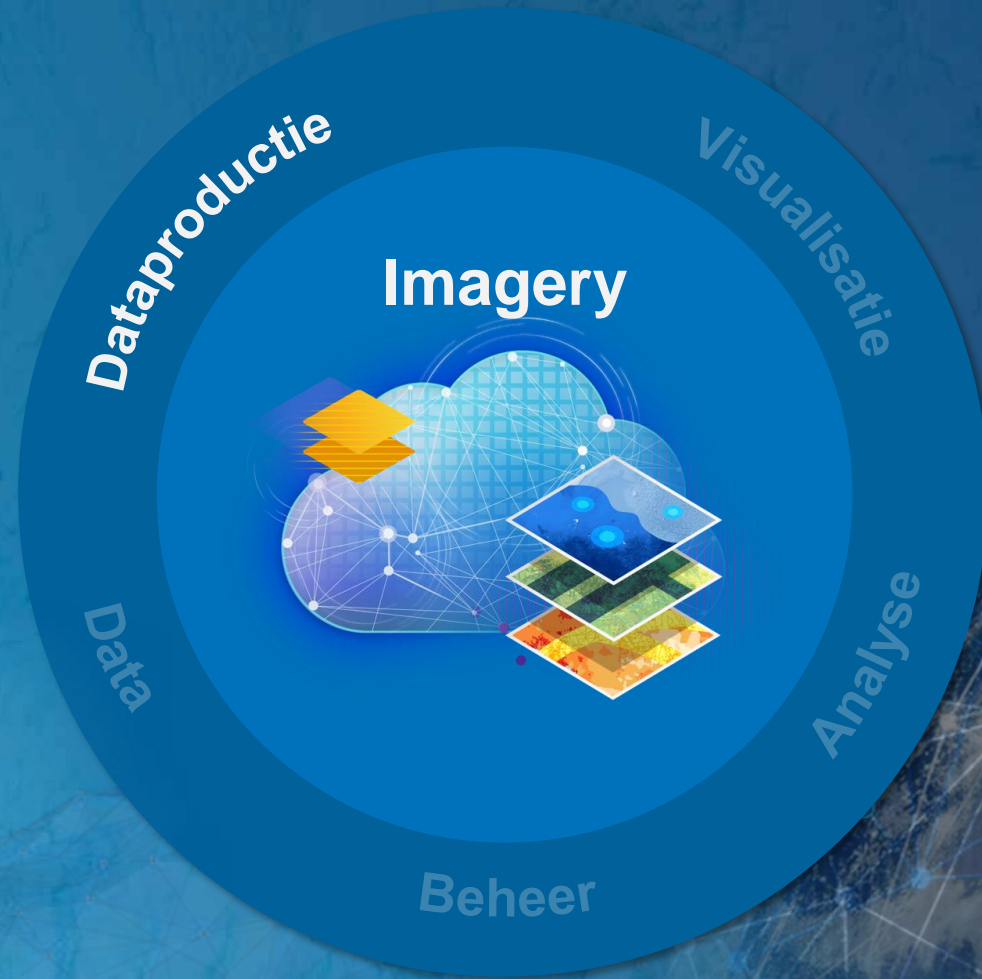


Premium imagery van Esri & partners

# True Ortho & DSM NL



Produceer uw eigen digitale representaties van de fysieke wereld





# Reality Mapping met ArcGIS Reality

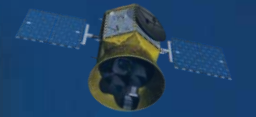
Creëer nauwkeurige digitale representaties van de fysieke wereld

Basis voor Digital Twins



Intuïtief en fotorealistisch

Hoge kwaliteit



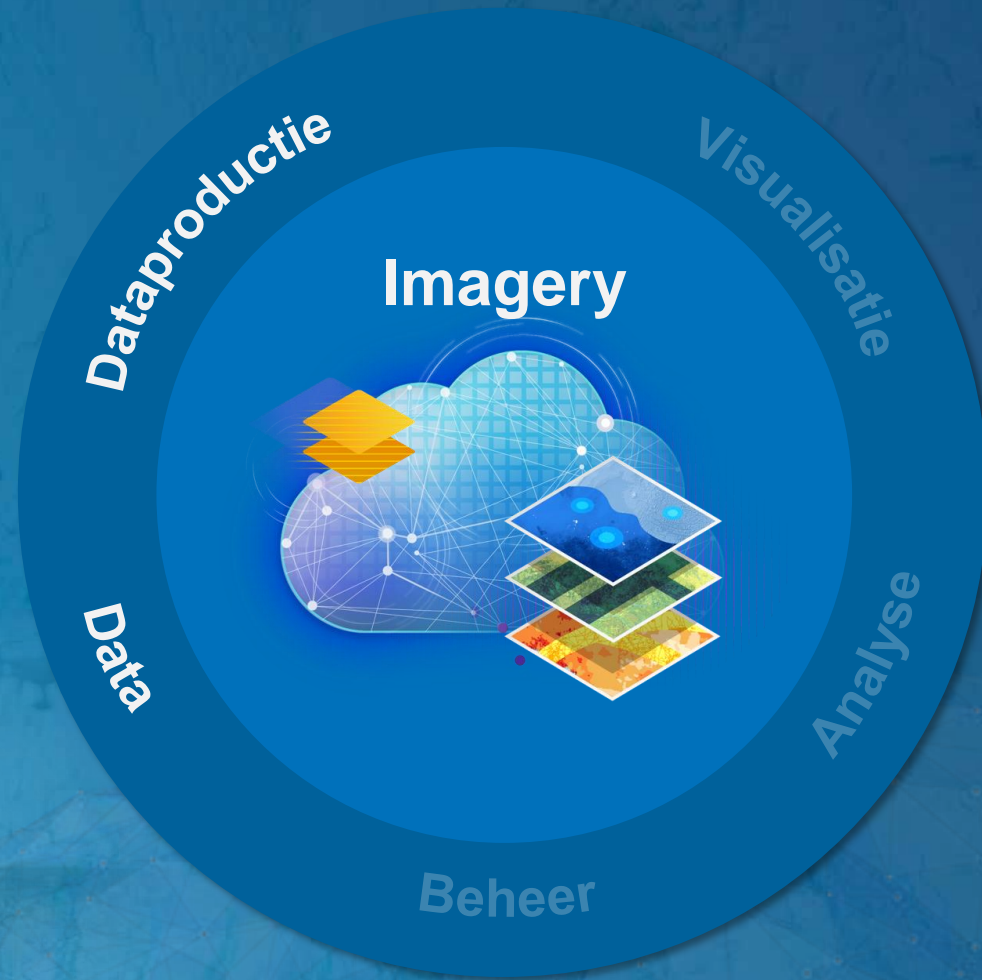
# Reality Mapping met ArcGIS Reality

Creëer nauwkeurige digitale representaties van de fysieke wereld



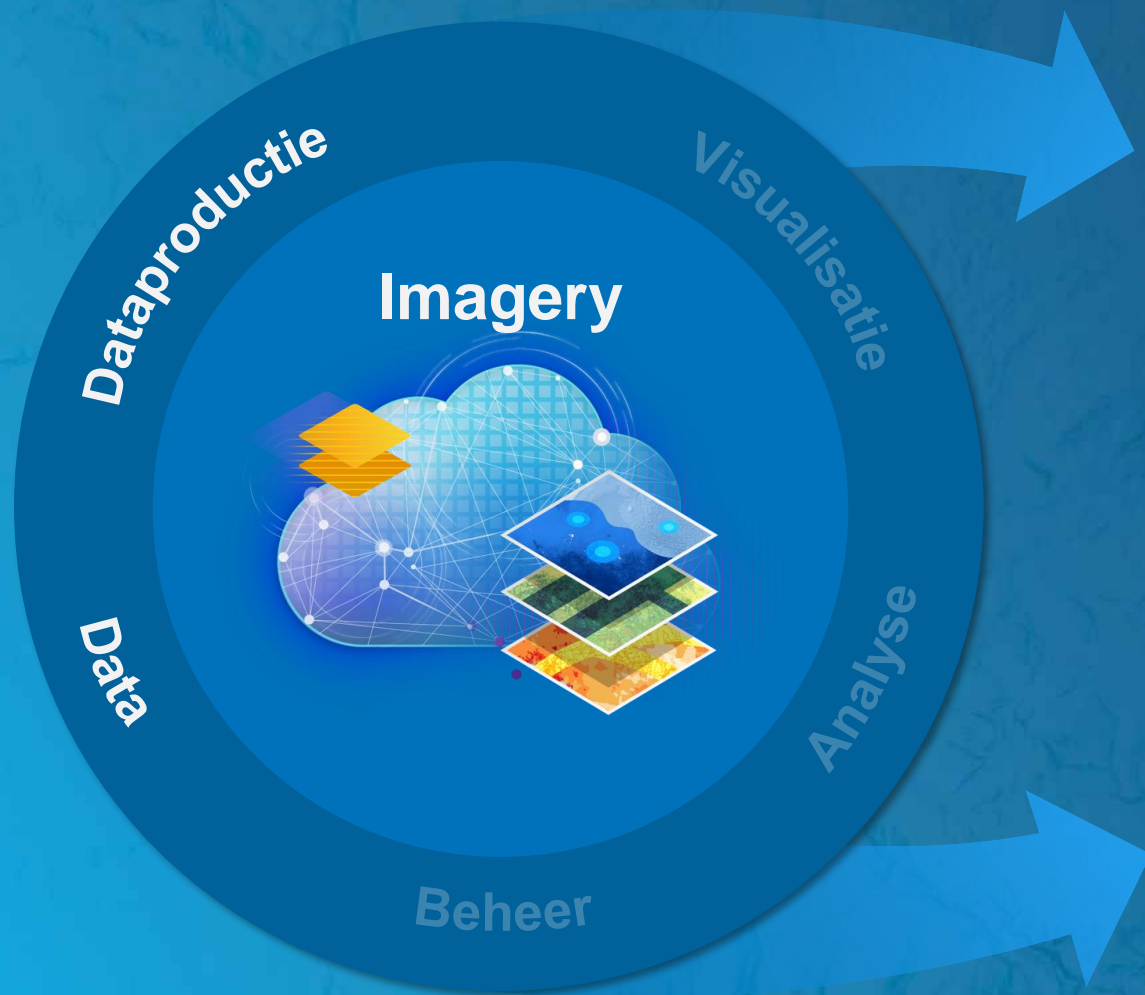
# Reality Mapping

Direct te gebruiken dataproducten én software om uw eigen data-producten te genereren



# Reality Mapping

Direct te gebruiken dataproducten én software om uw eigen data-producten te genereren



## Software

### As-a-service

- Eigen data
- Verwerkt door Esri Nederland

## Direct te gebruiken data

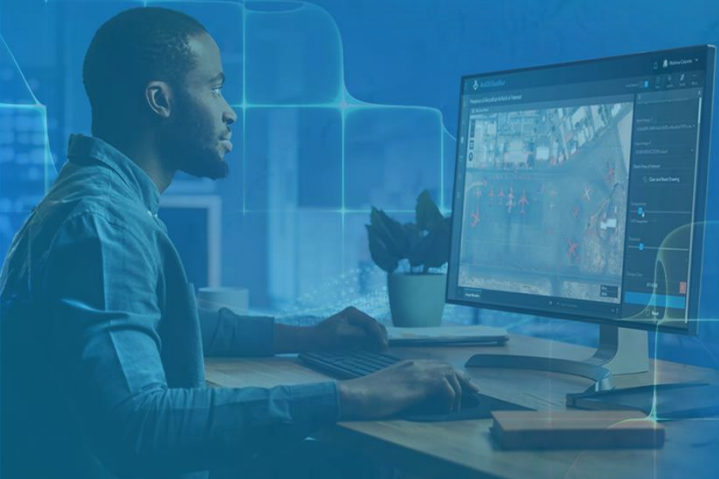
- True Ortho en DSM Nederland
- 3DNL van Cyclomedia voor 3D-meshes



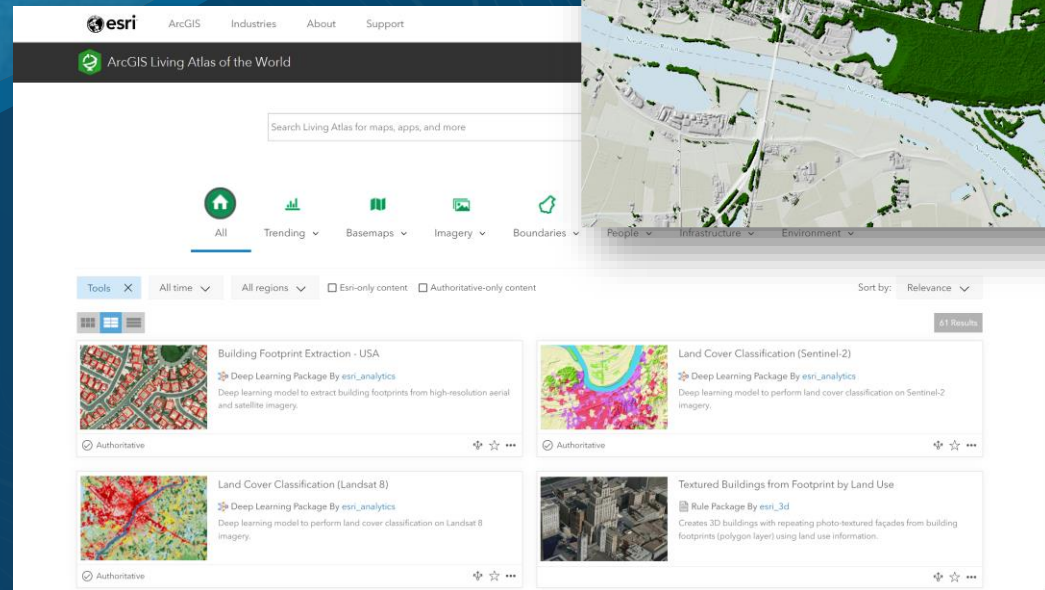
ArcGIS biedt uitgebreide mogelijkheden voor werken met imagery



ArcGIS biedt uitgebreide mogelijkheden voor werken met imagery



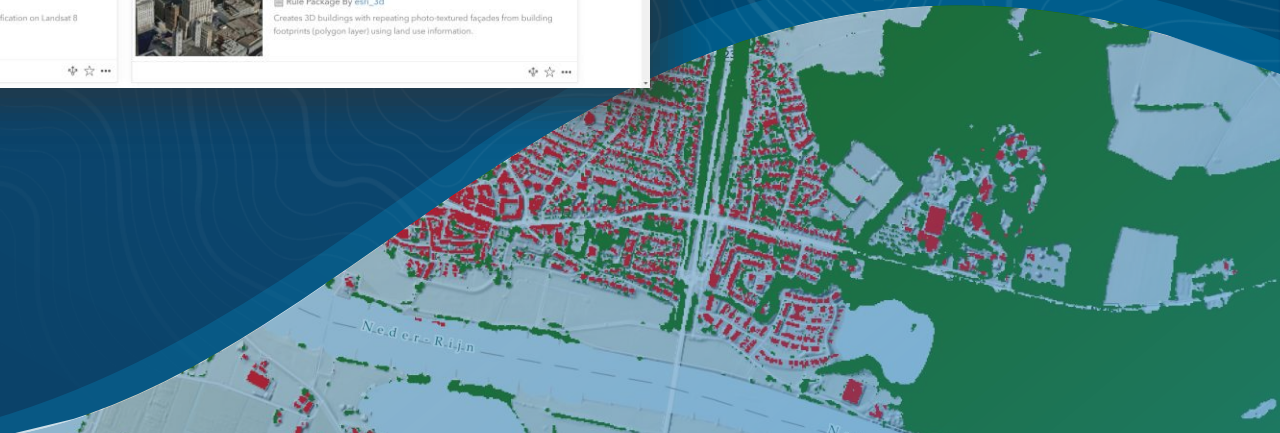
# GeoAI



The screenshot shows the Esri ArcGIS Living Atlas of the World search interface. The top navigation bar includes the Esri logo and links for ArcGIS, Industries, About, and Support. Below this is the "ArcGIS Living Atlas of the World" header and a search bar with the placeholder text "Search Living Atlas for maps, apps, and more". A horizontal menu below the search bar contains icons for "All", "Trending", "Basemaps", "Imagery", "Boundaries", "People", "Infrastructure", and "Environment".

The search results are displayed in a grid format. The filters at the top of the results section are "Tools", "All time", "All regions", "Esi-only content", and "Authoritative-only content". The results are sorted by "Relevance" and show 41 results. Four results are visible:

- Building Footprint Extraction - USA**: Deep Learning Package By esri\_analytics. Deep learning model to extract building footprints from high-resolution aerial and satellite imagery. Authoritative.
- Land Cover Classification (Sentinel-2)**: Deep Learning Package By esri\_analytics. Deep learning model to perform land cover classification on Sentinel-2 imagery. Authoritative.
- Land Cover Classification (Landsat 8)**: Deep Learning Package By esri\_analytics. Deep learning model to perform land cover classification on Landsat 8 imagery. Authoritative.
- Textured Buildings from Footprint by Land Use**: Rule Package By esri\_3d. Creates 3D buildings with repeating photo-textured facades from building footprints (polygon layer) using land use information. Authoritative.





**Bedankt**

*[jbak@esri.nl](mailto:jbak@esri.nl)*