

## Consumer Price Index, base period June 2019

### April 2025

The Central Bureau of Statistics presents the most important findings for the Consumer Price Index (CPI) for the month of April 2025.

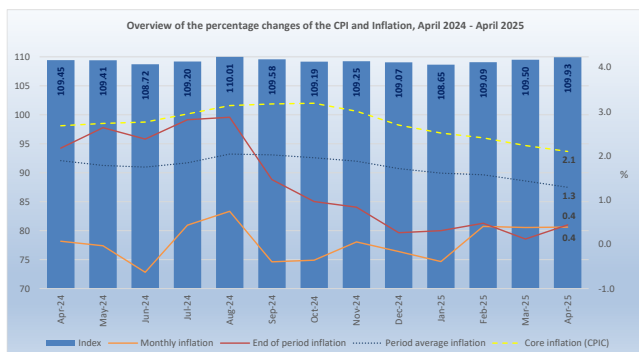


### Consumer Price Index for the month of April 2025

The CPI for April 2025 (109.93), shows an increase of 0.4% compared to the index of March 2025 (109.50).

The percentage change of the CPI over the last twelve (12) months (April 2024 to April 2025) is 0.4, a decrease of 1.8 percentage points (ppts) compared to the percentage change for the same period of last year (2.2%).

The period average (last 24 months) percentage change of the CPI for the periods April 2023 to April 2024 and April 2024 to April 2025 is 1.3%, a decrease of 0.6 ppts compared to the period average percentage change over the periods April 2022 to April 2023 and April 2023 to April 2024 (1.9%).

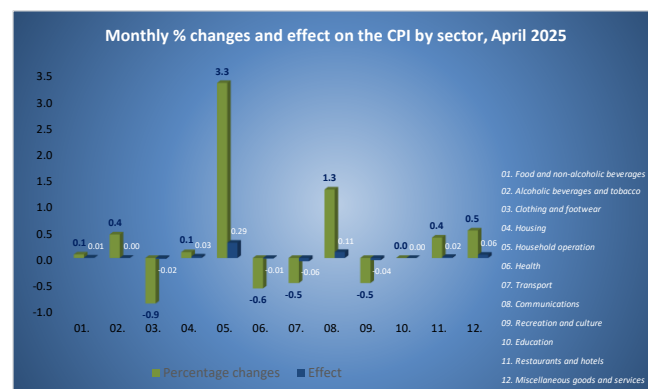


During this month, seven (7) of the twelve (12) sectors registered increases in prices. The increases that had the greatest influence on the CPI were registered for the "Household operation" (3.3%) and "Communications" (1.3%) sectors, which contributed with an effect of respectively, 0.29 and 0.11 ppts. The increases in the remaining sectors had an effect of 0.12 ppts on the CPI of April 2025.

Aforementioned increases were partially offset mainly by a decrease in the index for the "Transport" (-0.5%) sector, which caused an effect of -0.06 ppts. The decreases in the remaining sectors had an effect of -0.07 ppts on the CPI of April 2025.

The increase in the "Household operation" sector was mainly due to an increase of 17.9% in the category "Household appliances", which contributed to an effect of 0.39 ppts. The increase in the "Communications" sector was due to an increase in the category "Telephone and telefax equipment" (24.5%), which contributed to an effect of 0.11 ppts.

The decrease in the "Transport" sector was mainly due to a decrease in the category "Operation of personal transport equipment" (-1.2%), which contributed to an effect of -0.10 ppts.



### Consumption basket

The consumption basket of the CPI consists of 408 goods and services. Compared to March 2025, 47.5% of these products had an increase in price, causing an effect of 1.19 ppt, while 37.5% showed a decrease, contributing to an effect of -0.80 ppts and the remaining 15.0% had no change in price. Compared to March 2025 the prices of goods (0.8%) show an increase causing an influence of 0.47 ppts, while the prices of services decreased by 0.2% and had an effect of -0.08 ppts on the CPI of April 2025.

CPI (BASE JUN 2019 = 100)							April-2025				CPIC			SUBSISTENCE LEVEL		
Month	Year	Index	Avg. Index	Monthly	Year-to-date	End of period	Period average	Goods	Services	CPIC	Energy	Food	1 adult	2 adults + 2 children		
April	2025	109.93	↑ 109.30	↑ 0.4	↑ 0.8	↑ 0.4	↑ 1.3	↑ 0.8	↑ -0.2	2.1	↑ -2.4	↓ 1.7	2,625	↑ 5,513	↑	
March	2025	109.50	↑ 109.26	↑ 0.4	↑ 0.4	↑ 0.1	↑ 1.4	↑ 0.4	↑ 0.4	2.2	↑ -2.2	↓ 1.9	2,622	↑ 5,507	↑	
April	2024	109.45	107.91	0.1	0.6	2.2	1.9	0.6	-0.68	2.7	-2.1	3.4	2,618	5,497		

## Core inflation

The CPIC (core inflation) - CPI excluding the effect of energy and food – was 2.1% in April 2025. The energy index - which consists of the products: electricity, water, gasoline and diesel – was -2.4%. The food index showed an increase of 1.7%.

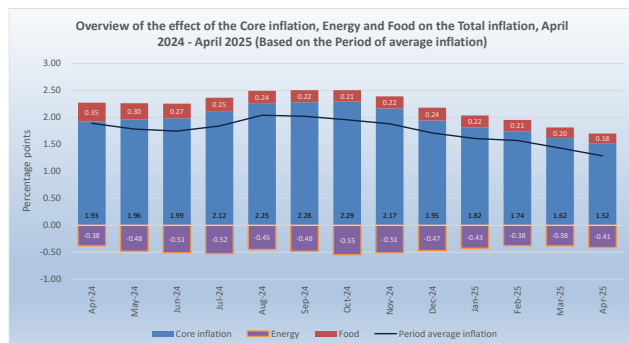
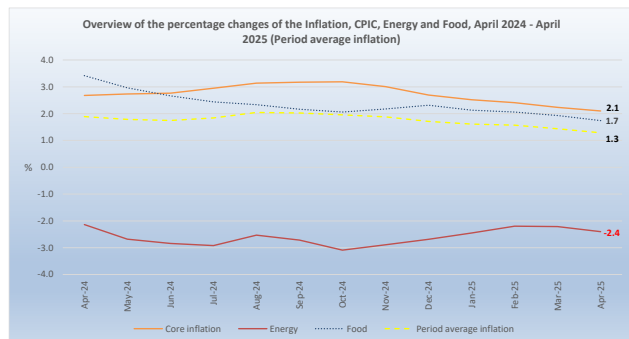
### What is CPIC?

The CPIC (core inflation) is a portion of the inflation where certain items, which have volatile price movements, are excluded, such as food products and energy. When calculating the core inflation, the most volatile components are eliminated from the inflation. The core inflation index is used to assess the medium and long-term trends of the general level of prices. For purposes of economic policy-making, especially monetary policy, many economists focus on the proportion of the core inflation, as this allows a more in-depth evaluation of the recent inflation developments in the economy. The annual average of the CPI is used to calculate the CPIC.

The CPIC is calculated by comparing the average index for the most recent 12-month period compared with the preceding 12-month period.

The three main uses of a CPI are:

1. a calculation method to compensate employees due to the loss of purchasing power, adjusting their salaries, with the percentage change rate of the CPI, which is known as indexation.
2. a tool used in National Accounts to adjust components of the gross domestic product (GDP) from nominal terms to real terms. (For example, by eliminating the effect of the price changes from the consumption value)
3. a means commonly used by governments and central banks to set inflation targets.



## Subsistence level

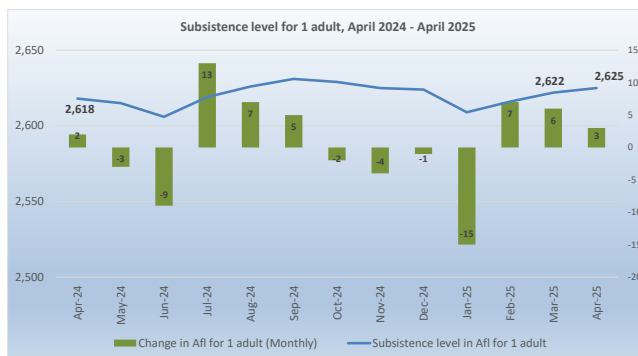
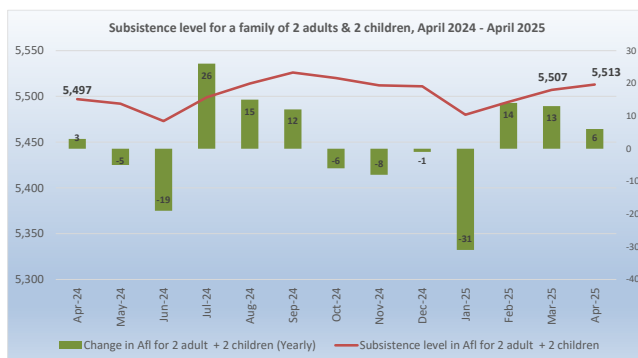
The subsistence level for a household consisting of two (2) adults and two (2) children (aged 0-15 years) in April 2025 is Afl. 5,513, an increase of Afl. 6 compared to March 2025 (Afl. 5,507). The subsistence level for a single adult household is Afl. 2,625, an increase of Afl. 3 compared to March 2025 (Afl. 2,622).

### What is the Subsistence level and how is it adjusted?

The CBS defines the subsistence level as the minimum level of income that is perceived as necessary for a person or family to be able to function in the society in an adequate and socially acceptable manner. When the definition of subsistence level is used, it refers in reality to a "Social subsistence level" and not the literal definition "the money needed to purchase those goods and services deemed necessary for living a life free of basic deprivation" (United Nations).

A subsistence level index was created by calculating the cost of the essential resources that an average adult consumes during a month. Each month this index is adjusted, based on the prices of food, clothing, shelter, transportation, and other items in the basket.

The current subsistence level is based on the "Subsistence level 2010" report published by the CBS in December 2010, and is updated monthly according to the CPI. The reference unit used in this report is of a household consisting of two adults and two children (0 to 14 years). The total weight of such a household is 2.1 (1.0 + 0.5 + 0.3 + 0.3).



## The subsistence level in April 2025

The subsistence level is the minimum level of income which is perceived necessary to achieve an adequate standard of living in a given country. The subsistence level is usually determined by estimating the cost of all the essential resources that an average adult consumes in one month or year. This is commonly called a basic needs index, and varies according to the price of food, clothing, housing, transport and other items in the "basket". Equivalent scales are used to adjust the assumed standard of living, of households of different sizes and composition. The scale assigns a weight of 1.0 for the first adult and 0.5 for each additional adult in the household (aged 15+) and a weight of 0.3 for each child (aged 0-14 years). The subsistence level is based on figures of the report "Bestaansminimum 2010" and is monthly updated for inflation using the monthly CPI. The reference unit used in this report is a household consisting of two (2) adults and two (2) children (aged 0-14 years).

In April 2025 the monthly subsistence level for a household consisted of two (2) adults and two (2) children (aged 0-14 years) (Afl. 5,513) showed an increase of Afl. 16 compared to April 2024 (Afl. 5,497) and was mainly caused by increases of Afl. 8 and Afl. 7 in the sectors "Food and non-alcoholic beverages" and "Household operation". The largest decrease in April 2025 was registered in the sector "Transport" (Afl. - 11).

Table 1 Monthly subsistence level in Aruba (in Afl.) by sector for a family of 2 adults and 2 children (aged 0-14 years)

Sector	Apr-24	Apr-25	Absolute Change
Food and non-alcoholic beverages	2,290	2,298	8
Clothing and footwear	240	242	2
Housing	1,654	1,659	5
Household operation	111	118	7
Health	84	87	3
Transport	338	327	-11
Communications	171	176	5
Recreation and culture	163	156	-7
Education	97	97	0
Miscellaneous goods and services	349	352	3
<b>Total</b>	<b>5,497</b>	<b>5,513</b>	<b>16</b>

Source: Central Bureau of Statistics Aruba

Table 2 Monthly Subsistence level in Aruba (in Afl.) by family size and composition, April 2025 (Base period Oct. 2010)

Period	Escala di ekivalencia				
	1	1.3	1.5	1.8	2.1
	1 adult	1 adult + 1 child	2 adults	2 adults + 1 child	2 adults + 2 children
Apr-24	2,618	3,403	3,927	4,712	5,497
May-24	2,615	3,400	3,923	4,708	5,492
Jun-24	2,606	3,388	3,909	4,691	5,473
Jul-24	2,619	3,404	3,928	4,714	5,499
Aug-24	2,626	3,413	3,938	4,726	5,514
Sep-24	2,631	3,421	3,947	4,736	5,526
Oct-24	2,629	3,417	3,943	4,732	5,520
Nov-24	2,625	3,412	3,937	4,725	5,512
Dec-24	2,624	3,411	3,936	4,723	5,511
Jan-25	2,609	3,392	3,914	4,697	5,480
Feb-25	2,616	3,401	3,924	4,709	5,494
Mar-25	2,622	3,409	3,933	4,720	5,507
Apr-25	2,625	3,413	3,938	4,726	5,513

Source: Central Bureau of Statistics Aruba

In April 2025, the monthly subsistence level for a single adult household is Afl 2,625, which represents an income deficit of Afl. 639, an increase of Afl. 7 compared to the deficit observed one year ago (Afl. 632). This deficit is the second highest registered over a period of six (6) years for the month of April.

Tabel 3 Monthly income surplus/deficit (in Afl.) for a single adult household for April, 2020 - 2025

Period	1 adult	Minimum	
		wage	Surplus/deficit
2020	2,296	1,815	-481
2021	2,262	1,815	-447
2022	2,382	1,815	-567
2023	2,564	1,893	-671
2024	2,618	1,986	-632
2025	2,625	1,986	-639

Source: Central Bureau of Statistics Aruba

# Press Release Consumer Price Index April 2025

Table 4 Overview of the percentage changes of the CPI and the subsistence level, April 2024 - April 2025 (Jun 2019=100)

	Apr-24	May-24	Jun-24	Jul-24	Aug-24	Sep-24	Oct-24	Nov-24	Dec-24	Jan-25	Feb-25	Mar-25	Apr-25
<b>Index CPI</b>													
CPI (Monthly)	109.45	109.41	108.72	109.20	110.01	109.58	109.19	109.25	109.07	108.65	109.09	109.50	109.93
CPI (12-month average)	107.91	108.14	108.35	108.60	108.86	108.99	109.08	109.15	109.18	109.21	109.25	109.26	109.30
<b>Percentage changes</b>													
Monthly	0.1	0.0	-0.6	0.4	0.7	-0.4	-0.4	0.1	-0.2	-0.4	0.4	0.4	0.4
Year-to-date	0.6	0.6	-0.1	0.4	1.1	0.7	0.4	0.4	0.3	-0.4	0.0	0.4	0.8
End of period	2.2	2.6	2.4	2.8	2.9	1.5	1.0	0.8	0.3	0.3	0.5	0.1	0.4
Period average	1.9	1.8	1.7	1.8	2.0	2.0	2.0	1.9	1.7	1.6	1.6	1.4	1.3
<b>Index Goods</b>													
Goods (Monthly)	109.58	109.68	108.49	108.77	110.52	109.93	109.26	108.83	108.35	107.88	108.65	109.08	109.97
Goods (12-month average)	108.22	108.29	108.31	108.51	108.78	108.91	108.97	109.01	109.02	109.03	109.07	109.08	109.12
<b>Percentage changes</b>													
Monthly	0.6	0.1	-1.1	0.3	1.6	-0.5	-0.6	-0.4	-0.4	-0.4	0.7	0.4	0.8
Year-to-date	1.2	1.3	0.2	0.5	2.1	1.6	0.9	0.5	0.1	-0.4	0.3	0.7	1.5
End of period	-0.2	0.8	0.2	2.3	3.0	1.4	0.7	0.5	0.1	0.1	0.4	0.1	0.4
Period average	0.3	-0.2	-0.5	-0.4	0.0	0.1	0.2	0.3	0.4	0.5	0.7	0.8	0.8
<b>Index Services</b>													
Services (Monthly)	109.26	109.05	109.05	109.79	109.31	109.09	109.09	109.83	110.07	109.72	109.70	110.10	109.88
Services (12-month average)	107.48	107.94	108.42	108.74	108.97	109.11	109.23	109.35	109.40	109.45	109.50	109.51	109.56
<b>Percentage changes</b>													
Monthly	-0.7	-0.2	0.0	0.7	-0.4	-0.2	0.0	0.7	0.2	-0.3	0.0	0.4	-0.2
Year-to-date	-0.3	-0.5	-0.5	0.2	-0.2	-0.4	-0.4	0.3	0.5	-0.3	-0.3	0.0	-0.2
End of period	5.7	5.3	5.6	3.6	2.6	1.6	1.3	1.3	0.5	0.6	0.5	0.1	0.6
Period average	4.3	4.6	5.0	5.1	5.0	4.8	4.6	4.1	3.6	3.2	2.8	2.4	1.9
<b>Indices CPIC, Energy &amp; Food</b>													
CPIC (12-month average)	105.74	106.02	106.27	106.58	106.93	107.16	107.36	107.50	107.55	107.62	105.44	107.80	107.96
Energy (12-month average)	113.40	113.43	113.45	113.41	113.29	112.91	112.41	112.10	111.88	111.71	113.66	111.15	110.68
Food (12-month average)	115.25	115.46	115.68	115.93	116.16	116.37	116.57	116.82	117.07	117.13	115.04	117.26	117.26
<b>Percentage changes</b>													
CPIC (Period average)	2.7	2.7	2.8	2.9	3.1	3.2	3.2	3.0	2.7	2.5	2.6	2.2	2.1
Energy (Period average)	-2.1	-2.7	-2.8	-2.9	-2.5	-2.7	-3.1	-2.9	-2.7	-2.4	-1.1	-2.2	-2.4
Food (Period average)	3.4	3.0	2.7	2.4	2.3	2.2	2.1	2.2	2.3	2.1	4.0	1.9	1.7
<b>Subsistence level (Monthly)</b>													
1 adult	2,618	2,615	2,606	2,619	2,626	2,631	2,629	2,625	2,624	2,609	2,616	2,622	2,625
2 adults + 2 children	5,497	5,492	5,473	5,499	5,514	5,526	5,520	5,512	5,511	5,480	5,494	5,507	5,513
<b>Changes in Afl</b>													
1 adult (Monthly)	2	-3	-9	13	7	5	-2	-4	-1	-15	7	6	3
1 adult (Yearly)	54	65	65	79	72	46	42	31	24	8	15	6	8
2 adults + 2 children (Monthly)	3	-5	-19	26	15	12	-6	-8	-1	-31	14	13	6
2 adults + 2 children (Yearly)	113	138	137	165	150	98	88	65	51	18	32	13	16

Source: Central Bureau of Statistics Aruba

Table 5 Percentage change by sector

Sector	Weight coefficient	Effect Mar - Apr	Percentage changes			
			Monthly Mar - Apr	Year-to-date Dec - Apr	End of period Apr 24 - Apr 25	Period average Apr 23/24 - Apr 24/25
<b>CPI</b>	<b>10,000.0</b>	<b>0.39</b>	<b>0.4</b>	<b>0.8</b>	<b>0.4</b>	<b>1.3</b>
01. Food and non-alcoholic beverages	1,125.3	0.01	0.1	-1.1	0.4	2.0
02. Alcoholic beverages and tobacco	81.9	0.00	0.4	0.9	0.6	0.2
03. Clothing and footwear	625.9	-0.02	-0.9	-1.5	1.1	0.3
04. Housing	2,553.3	0.03	0.1	1.3	0.3	1.0
05. Household operation	741.3	0.29	3.3	3.1	6.3	0.0
06. Health	235.8	-0.01	-0.6	1.0	4.2	2.4
07. Transport	1,815.4	-0.06	-0.5	0.4	-3.0	0.2
08. Communications	706.3	0.11	1.3	2.9	2.4	5.5
09. Recreation and culture	891.2	-0.04	-0.5	-1.5	-4.1	-2.5
10. Education	83.0	0.00	0.0	0.0	0.0	5.6
11. Restaurants and hotels	373.7	0.02	0.4	1.9	3.2	3.7
12. Miscellaneous goods and services	767.0	0.06	0.5	0.4	0.8	2.1

Source: Central Bureau of Statistics Aruba

Table 6 Categories with the greatest positive effect on the CPI of April 2025

Category	Monthly change	Effect
Household appliances	17.9	0.39
Telephone and telefax equipment	24.5	0.11
Transport services	13.0	0.05
Tools and equipment for house and garden	6.2	0.05
Personal effects n.e.c.	3.8	0.05

Source: Central Bureau of Statistics Aruba

Table 7 Categories with the greatest negative effect on the CPI of April 2025

Category	Monthly change	Effect
Furniture, furnishings, carpets and other floor coverings	-13.7	-0.14
Operation of personal transport equipment	-1.2	-0.10
Holidays	-3.9	-0.09
Clothing	-1.1	-0.02
Purchase of vehicles	-0.4	-0.02

Source: Central Bureau of Statistics Aruba



## Change in prices of crude oil, utilities, gasoline and diesel in April 2025

The prices of utilities (electricity and water), gasoline and diesel are for the greater part determined by international crude oil prices. In April 2025 the average price per barrel of crude oil (US\$ 64.22) had a decrease of US\$ 3.84 (-5.6%) compared to March 2025 (US\$ 68.06).

The prices of electricity and water did not change compared to March 2025. Subsequently, the average electricity price per household remained at Afl. 263.67, while the average price of water per household remained at Afl. 168.73.

In April 2025 the price of gasoline registered a decrease of Afl. 1.10 cents (-0.5%) and had an effect of -0.02 ppts on the CPI. The price of diesel registered a decrease of Afl. 9.90 cents (-4.6%) and had an effect of -0.01 ppt on the CPI of April 2025.

In April 2025, utilities, gasoline and diesel as a group, showed a decrease in price of 0.2% compared to March 2025, and had an effect of -0.04 ppts on the CPI, while the remaining 404 goods and services, as a group, show an increase of 0.5% and had an effect of 0.43 ppts on the CPI.

Table 9 Effect on the CPI of April 2025 of goods and services which are dependent on crude oil prices

Category	Weight	Monthly Mar-25 vs Apr-25		Yearly Apr-24 vs Apr-25	
		Change %	Effect	Change %	Effect
Electricity	810.2	0.0	0.00	-4.0	-0.30
Gasoline	430.5	-0.5	-0.02	-10.1	-0.51
Water	367.3	0.0	0.00	0.0	0.00
Diesel	30.2	-4.6	-0.01	-10.4	-0.04
Total group	1,638.1	-0.2	-0.04	-4.9	-0.85
Remaining goods and services	8,361.9	0.5	0.43	1.6	1.29
CPI	10,000.0	0.4	0.39	0.4	0.44

Source: Central Bureau of Statistics Aruba

Table 8 Prices of crude oil, utilities, gasoline and diesel, 2024 - 2025

Month	2024							2025						
	Total energy charge		Total energy charge	Electricity	Water	Gasoline	Diesel	Total energy charge		Total energy charge	Electricity	Water	Gasoline	Diesel
	Crude oil	≤ 500 kWh	501-1000 kWh					Crude oil	≤ 500 kWh	501-1000 kWh				
January	73.56	35.80	36.84	274.57	168.73	232.90	213.60	75.32	34.31	35.31	263.67	168.73	233.50	204.90
April	76.93	35.80	36.84	274.57	168.73	245.40	227.80	71.56	34.31	35.31	263.67	168.73	241.70	218.20
March	81.01	35.80	36.84	274.57	168.73	255.60	236.40	68.06	34.31	35.31	263.67	168.73	241.00	216.10
April	85.50	35.80	36.84	274.57	168.73	266.90	230.10	64.22	34.31	35.31	263.67	168.73	239.90	206.20
May	80.31	35.80	36.84	274.57	168.73	269.00	228.20							
June	79.89	35.80	36.84	274.57	168.73	257.60	217.70							
July	82.57	35.80	36.84	274.57	168.73	251.60	218.50							
August	76.79	35.80	36.84	274.57	168.73	257.60	220.70							
September	70.30	35.80	36.84	274.57	168.73	251.20	210.20							
October	72.48	35.80	36.84	274.57	168.73	234.90	201.40							
November	69.60	34.31	35.31	263.67	168.73	238.40	206.20							
December	69.94	34.31	35.31	263.67	168.73	233.70	205.60							
Yearly Average	76.57	35.55	36.59	272.76	168.73	249.57	218.03	69.79	34.31	35.31	263.67	168.73	239.03	211.35

Source: Central Bureau of Statistics Aruba

<sup>1</sup> Average West Texas Intermediate (WTI) crude oil price per barrel in US\$ (Source: U.S. Energy Information Administration)

<sup>2</sup> Total energy charge in Afl. cents per kWh

<sup>3</sup> Electricity price in Afl. is based on an average household usage of 725.5 kWh

<sup>4</sup> Water price in Afl. is based on an average household usage in m<sup>3</sup>

<sup>5</sup> Gasoline and diesel prices in Afl. cents per liter

## Change in prices of Food & catering services in April 2025

The “Food & catering services” index showed a slight increase of 0.02% in April 2025, after having decreased 0.1% in March 2025. The index for “Food at home” showed an increase of 0.1% in April, as six (6) of the eleven (11) “Food at home” indices increased in April 2025. The “Potatoes and other tubers” index registered the largest increase (3.3%) in April 2025. Furthermore, other significant increases were posted in the indices for “Non-alcoholic beverages” (1.3%), “Vegetables” (1.1%) and “Fish and other seafood” (0.9%).

The largest decreases in April 2025 were registered for the indices of “Milk, cheese and eggs” (-0.7%) and “Fruit” (-0.7%).

The index for “Food away from home” shows a decrease of 0.1% in April 2025.

In April 2025, “Food at home” and “Food away from home” as a group showed a slight increase in price of 0.02% compared to March 2025 and had an insignificant effect on the CPI, while the remaining goods and services, as a group, experienced an increase in price of 0.5%, causing an effect of 0.39 ppts on the CPI.

Table 11 Effect on the CPI of April 2025 of Food at home and Food away from home

Category	Weight	Monthly		Yearly	
		Mar-25 vs Apr-25	Effect	Apr-24 vs Apr-25	Effect
<i>Food at home</i>	1,087.7	0.1	0.01	0.4	0.04
<i>Food away from home</i>	429.8	-0.1	0.00	2.7	0.13
<i>Total group</i>	1,517.5	0.02	0.00	1.1	0.17
<i>Remaining goods and services</i>	8,482.5	0.5	0.39	0.3	0.27
<i>CPI</i>	10,000.0	0.4	0.39	0.4	0.44

Source: Central Bureau of Statistics Aruba

Table 10 Percentage change for Food & catering services

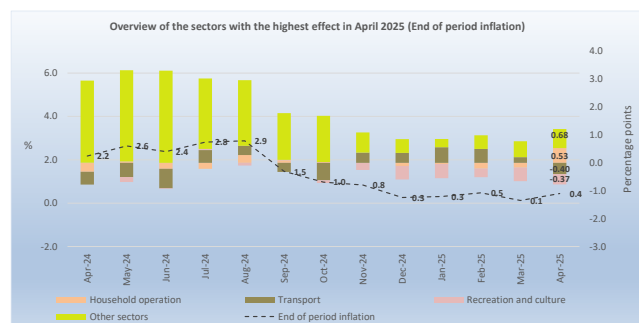
	Weight coefficient	Indices			Percentage changes			Effect	
		Apr-24	Mar-25	Apr-25	Monthly Feb - Mar	Monthly Mar - Apr	End of period Apr 24 - Apr 25	Monthly Mar - Apr	End of period Apr 24 - Apr 25
<b>Food &amp; catering services</b>	<b>1,517.5</b>	<b>118.51</b>	<b>119.74</b>	<b>119.77</b>	<b>-0.1</b>	<b>0.02</b>	<b>1.1</b>	<b>0.003</b>	<b>0.175</b>
<b>Food at home</b>	<b>1,087.7</b>	<b>117.25</b>	<b>117.62</b>	<b>117.70</b>	<b>-0.3</b>	<b>0.1</b>	<b>0.4</b>	<b>0.008</b>	<b>0.044</b>
<i>Bread and cereals</i>	178.1	121.59	122.37	122.28	-0.1	-0.1	0.6	-0.001	0.011
<i>Meat</i>	242.5	116.49	119.13	118.68	0.6	-0.4	1.9	-0.010	0.049
<i>Fish and other seafood</i>	49.0	108.48	108.55	109.49	-1.0	0.9	0.9	0.004	0.005
<i>Milk, cheese and eggs</i>	135.3	126.88	127.41	126.46	0.1	-0.7	-0.3	-0.012	-0.005
<i>Oils and fats</i>	32.2	123.37	127.10	126.62	0.3	-0.4	2.6	-0.001	0.010
<i>Fruit</i>	97.6	107.62	103.21	102.47	-4.4	-0.7	-4.8	-0.007	-0.046
<i>Potatoes and other tubers</i>	18.2	86.34	93.70	96.83	3.5	3.3	12.1	0.005	0.017
<i>Vegetables</i>	89.1	97.63	90.26	91.28	-2.1	1.1	-6.5	0.008	-0.052
<i>Sugar, jam, honey and other confectionery</i>	42.0	129.92	129.12	129.28	0.4	0.1	-0.5	0.001	-0.002
<i>Food products n.e.c.</i>	80.1	123.26	124.04	124.45	-0.3	0.3	1.0	0.003	0.009
<i>Non-alcoholic beverages</i>	123.6	121.98	124.76	126.33	0.6	1.3	3.6	0.018	0.002
<b>Food away from home</b>	<b>429.8</b>	<b>121.68</b>	<b>125.13</b>	<b>125.01</b>	<b>0.5</b>	<b>-0.1</b>	<b>2.7</b>	<b>-0.004</b>	<b>0.131</b>
<b>Other goods and services</b>	<b>8,482.5</b>	<b>107.83</b>	<b>107.67</b>	<b>108.17</b>	<b>0.5</b>	<b>0.5</b>	<b>0.3</b>	<b>0.388</b>	<b>0.266</b>
<i>Other goods</i>	4,735.8	107.82	107.12	108.19	0.6	1.0	0.3	0.467	0.161
<i>Other services</i>	3,746.7	107.84	108.37	108.14	0.4	-0.2	0.3	-0.079	0.104
<b>CPI</b>	<b>10,000.0</b>	<b>109.45</b>	<b>109.50</b>	<b>109.93</b>	<b>0.4</b>	<b>0.4</b>	<b>0.4</b>	<b>0.391</b>	<b>0.440</b>

Source: Central Bureau of Statistics Aruba

## CPI for the period April 2024 – April 2025

### Consumer Price Index

Over the last 12 months, the CPI increased by 0.4%. Nine (9) of the twelve (12) sectors registered increases in prices. The increases that had the greatest influence on the CPI were registered for the “Household operation” (6.3%), “Communications” (2.4%), “Restaurants and hotels” (3.2%), “Miscellaneous goods and services” (0.8%) and “Health” (4.2%) sectors, which contributed with an effect of respectively, 0.53, 0.21, 0.16, 0.09 and 0.09 ppts. The increases in the remaining sectors had an effect of 0.14 ppts on the CPI of April 2024 - April 2025.



Aforementioned increases were partially offset by decreases in the indices for the “Transport” (-3.0%) and “Recreation and culture” (-4.1%) sectors, causing an effect of respectively, -0.40 and -0.37 ppts on the CPI of April 2024 - April 2025.

The increase in the “Household operation” sector was mainly due to an increase in the category “Household appliances” (28.6%), which contributed to an effect of 0.57 ppts. The increase in the “Communications” sector was mainly due to an increase in the category “Telephone and telefax equipment” (54.4%), which contributed with an effect of 0.21 ppts. The increase in the “Restaurants and hotels” sector was mainly due to an increase in the category “Catering services” (2.7%), which contributed to an effect of 0.13 ppts. The increase in the “Miscellaneous goods and services” sector was due to an increase in the category “Personal effects n.e.c.” (7.8%), which contributed with an effect of 0.09 ppts. The increase in the “Health” sector was due to an increase of 6.6% in the category “Medical products, appliances and equipment”, which contributed to an effect of 0.09 ppts.

The decrease in the “Transport” sector was due to a decrease of 5.7% in the category “Operation of personal transport equipment”, which contributed to an effect of -0.49 ppts. The decrease in the “Recreation and culture” sector was mainly due to a decrease in the category “Holidays” (-12.4%), which contributed to an effect of -0.30 ppts.

### Consumption basket

Over the last year 46.8% of the products in the consumption basket had an increase in price, causing an effect of 2.75 ppts, while 42.2% showed a decrease, contributing to an effect of -2.31 ppts and the remaining 11.0% had no change in price. The prices of goods (0.4%) and services (0.6%) showed increases and caused an influence of respectively, 0.21 and 0.24 ppts.

### Subsistence level

Over the last 12 months, the subsistence level for a household consisting of two (2) adults and two (2) children (aged 0-15 years) registered an increase of Afl. 16, from Afl. 5,497 in April 2024 to Afl. 5,513 in April 2025. This increase was mainly due to increases in the “Food and non-alcoholic beverages” (Afl. 8) and “Household operation” (Afl. 7) sectors.

### Change in prices of crude oil, utilities, gasoline and diesel

The average price per barrel of crude oil registered a decrease of US\$ 21.28 (-24.9%) from US\$ 85.50 in April 2024 to US\$ 64.22 in April 2025.

The energy index decreased by 4.9% over the past 12 months and had an influence of -0.85 ppts. The indices of “Gasoline” (-10.1%) and “Diesel” (-10.4%) registered decreases over the last year, contributing with an effect of respectively, -0.51 and -0.04 ppts on the yearly CPI. The index of “Electricity” shows a decrease of 4.0% and contributed with an effect of -0.30 ppts, while the index of “Water” did not register any changes over this period. The remaining 404 goods and services, as a group, show an increase of 1.6% and had an effect of 1.29 ppts on the CPI.

### Change in prices of Food & catering services

Over the last 12 months, the “Food & catering services” increased by 1.1%. The “Food at home” index showed an increase of 0.4%, where seven (7) of the “Food at home” food groups increased over this period.

The “Potatoes and other tubers” index increased by 12.1%, the largest increase among the “Food at home” food groups. Furthermore, other significant increases were posted in the indices for “Non-alcoholic beverages” (3.6%), “Oils and fats” (2.6%) and “Meat” (1.9%). The largest decrease during this period was registered in the index for “Vegetables” (-6.5%).

The index for “Food away from home” increased by 2.7% over the last 12 months.

Over the last 12 months, “Food at home” and “Food away from home” as a group showed an increase in price of 1.1% and had an effect of 0.17 ppts on the CPI, while the remaining goods and services, as a group, experienced an increase in price of 0.3%, causing an effect of 0.27 ppts on the CPI.

# APPENDIX 1

## Monthly & Yearly Changes (%) in the Consumer Price Index for April 2025, Total Population (Jun 2019 = 100)

DESCRIPTION	WEIGHT	2024	2024	2025	2025	Apr-24	Apr-25	Monthly	Ytd	End of period	Period average
	coefficient	Apr	Dec	Mar	Apr	Average	Average	Mar - Apr	Dec - Apr	Apr 24 - Apr 25	Apr 23/24 - Apr 24/25
						12 months	12 months			12 months	24 months
<b>Food and non-alcoholic beverages</b>	<b>1,087.7</b>	<b>117.25</b>	<b>118.98</b>	<b>117.62</b>	<b>117.70</b>	<b>115.76</b>	<b>118.03</b>	<b>0.1</b>	<b>-1.1</b>	<b>0.4</b>	<b>2.0</b>
Food	964.1	116.65	118.37	116.70	116.59	115.25	117.26	-0.1	-1.5	-0.1	1.7
Non-alcoholic beverages	123.6	121.98	123.77	124.76	126.33	119.76	124.06	1.3	2.1	3.6	3.6
<b>Alcoholic beverages and tobacco</b>	<b>78.2</b>	<b>110.80</b>	<b>110.49</b>	<b>110.97</b>	<b>111.47</b>	<b>110.47</b>	<b>110.68</b>	<b>0.4</b>	<b>0.9</b>	<b>0.6</b>	<b>0.2</b>
Alcoholic beverages for consumption at home	62.2	108.79	108.38	108.06	108.67	108.68	108.39	0.6	0.3	-0.1	-0.3
Tobacco	16.0	118.62	118.68	122.29	122.33	117.39	119.58	0.0	3.1	3.1	1.9
<b>Clothing and footwear</b>	<b>276.8</b>	<b>87.87</b>	<b>90.21</b>	<b>89.63</b>	<b>88.85</b>	<b>88.22</b>	<b>88.45</b>	<b>-0.9</b>	<b>-1.5</b>	<b>1.1</b>	<b>0.3</b>
Clothing	212.8	88.01	92.67	91.38	90.39	89.20	90.44	-1.1	-2.5	2.7	1.4
Footwear	64.0	87.40	82.04	83.83	83.73	84.95	81.83	-0.1	2.1	-4.2	-3.7
<b>Housing</b>	<b>2,522.2</b>	<b>112.03</b>	<b>110.83</b>	<b>112.19</b>	<b>112.31</b>	<b>110.60</b>	<b>111.70</b>	<b>0.1</b>	<b>1.3</b>	<b>0.3</b>	<b>1.0</b>
Actual rentals for housing	666.7	107.45	108.53	108.93	109.06	106.73	108.32	0.1	0.5	1.5	1.5
Imputed rentals for housing	34.4	94.59	94.59	94.59	94.59	94.59	94.59	0.0	0.0	0.0	0.0
Maintenance and repair of the dwelling	517.0	122.87	122.07	124.69	125.11	116.85	122.40	0.3	2.5	1.8	4.8
Water supply and miscellaneous services relating to the dwelling	463.6	121.83	121.83	122.92	122.92	121.83	122.20	0.0	0.9	0.9	0.3
Electricity, gas and other fuels	840.4	104.30	100.34	101.89	101.89	104.30	102.70	0.0	1.5	-2.3	-1.5
<b>Household operation</b>	<b>929.2</b>	<b>99.92</b>	<b>102.95</b>	<b>102.75</b>	<b>106.17</b>	<b>103.35</b>	<b>103.39</b>	<b>3.3</b>	<b>3.1</b>	<b>6.3</b>	<b>0.0</b>
Furniture, furnishings, carpets and other floor coverings	128.8	79.09	84.27	86.10	74.29	81.55	84.20	-13.7	-11.8	-6.1	3.3
Household textiles	58.6	69.96	58.39	61.04	60.26	71.68	62.48	-1.3	3.2	-13.9	-12.8
Household appliances	246.0	88.32	97.94	96.34	113.58	104.06	100.16	17.9	16.0	28.6	-3.7
Glassware, tableware and household utensils	17.2	59.92	67.66	54.41	55.92	59.69	57.76	2.8	-17.4	-6.7	-3.2
Tools and equipment for house and garden	58.2	137.17	144.22	142.65	151.53	141.41	138.84	6.2	5.1	10.5	-1.8
Goods and services for routine household maintenance and cleaning	420.5	113.73	113.55	113.87	113.78	110.55	113.82	-0.1	0.2	0.0	3.0
<b>Health</b>	<b>223.1</b>	<b>101.88</b>	<b>105.17</b>	<b>106.81</b>	<b>106.19</b>	<b>101.54</b>	<b>104.01</b>	<b>-0.6</b>	<b>1.0</b>	<b>4.2</b>	<b>2.4</b>
Medical products, appliances and equipment	152.3	99.44	104.41	105.73	106.03	98.85	102.01	0.3	1.6	6.6	3.2
Out-patient services	52.4	108.81	108.60	109.11	108.37	108.00	109.11	-0.7	-0.2	-0.4	1.0
Other treatments	7.8	100.70	100.68	101.01	100.48	100.89	101.07	-0.5	-0.2	-0.2	0.2
Health products and services n.e.c.	10.5	103.42	102.44	115.19	101.80	108.75	109.70	-11.6	-0.6	-1.6	0.9
<b>Transport</b>	<b>1,257.4</b>	<b>115.91</b>	<b>111.97</b>	<b>112.97</b>	<b>112.44</b>	<b>113.24</b>	<b>113.42</b>	<b>-0.5</b>	<b>0.4</b>	<b>-3.0</b>	<b>0.2</b>
Purchase of vehicles	442.6	108.98	109.56	109.57	109.15	104.71	109.41	-0.4	-0.4	0.2	4.5
Operation of personal transport equipment	763.3	122.62	114.66	116.98	115.61	120.08	117.60	-1.2	0.8	-5.7	-2.1
Transport services	51.5	76.09	92.84	82.82	93.58	85.15	85.81	13.0	0.8	23.0	0.8
<b>Communications</b>	<b>849.6</b>	<b>112.33</b>	<b>111.79</b>	<b>113.53</b>	<b>115.01</b>	<b>106.46</b>	<b>112.33</b>	<b>1.3</b>	<b>2.9</b>	<b>2.4</b>	<b>5.5</b>
Telephone and telefax equipment	43.8	94.50	84.01	117.22	145.89	81.14	94.32	24.5	73.7	54.4	16.2
Telephone and telefax services	805.8	113.30	113.30	113.33	113.33	107.84	113.31	0.0	0.0	0.0	5.1
<b>Recreation and culture</b>	<b>1,013.3</b>	<b>97.45</b>	<b>94.84</b>	<b>93.86</b>	<b>93.42</b>	<b>96.25</b>	<b>93.81</b>	<b>-0.5</b>	<b>-1.5</b>	<b>-4.1</b>	<b>-2.5</b>
Audio-visual, photographic and information processing equipment	58.5	80.84	68.89	70.50	70.61	74.44	72.08	0.2	2.5	-12.6	-3.2
Other major durables for recreation and culture	20.0	93.71	91.62	109.04	103.07	96.19	98.64	-5.5	12.5	10.0	2.6
Other recreational items and equipment; gardens and pets	266.6	111.19	108.68	107.79	107.30	109.31	108.96	-0.5	-1.3	-3.5	-0.3
Recreational and cultural services	309.1	102.16	103.61	104.45	105.99	101.94	103.23	1.5	2.3	3.8	1.3
Newspapers, books and stationery	43.7	92.27	75.72	75.04	81.22	89.56	79.32	8.2	7.3	-12.0	-11.4
Holidays	315.4	85.25	82.21	77.70	74.67	84.63	77.50	-3.9	-9.2	-12.4	-8.4
<b>Education</b>	<b>98.0</b>	<b>131.23</b>	<b>131.23</b>	<b>131.23</b>	<b>131.23</b>	<b>124.22</b>	<b>131.23</b>	<b>0.0</b>	<b>0.0</b>	<b>0.0</b>	<b>5.6</b>
Pre primary and primary education	24.0	142.86	142.86	142.86	142.86	132.14	142.86	0.0	0.0	0.0	8.1
Secondary education	43.4	145.73	145.73	145.73	145.73	135.82	145.73	0.0	0.0	0.0	7.3
Post-secondary non-tertiary education	4.6	100.00	100.00	100.00	100.00	100.00	100.00	0.0	0.0	0.0	0.0
Tertiary education	23.6	100.00	100.00	100.00	100.00	100.00	100.00	0.0	0.0	0.0	0.0
Education not definable by level	2.5	120.00	120.00	120.00	120.00	120.00	120.00	0.0	0.0	0.0	0.0
<b>Restaurants and hotels</b>	<b>442.0</b>	<b>121.36</b>	<b>122.96</b>	<b>124.76</b>	<b>125.24</b>	<b>118.51</b>	<b>122.90</b>	<b>0.4</b>	<b>1.9</b>	<b>3.2</b>	<b>3.7</b>
Catering services	429.8	121.68	123.90	125.13	125.01	120.04	123.74	-0.1	0.9	2.7	3.1
Accommodation services	12.2	110.06	89.67	111.83	133.35	64.79	93.24	19.2	48.7	21.2	43.9
<b>Miscellaneous goods and services</b>	<b>1,222.6</b>	<b>105.86</b>	<b>106.29</b>	<b>106.11</b>	<b>106.67</b>	<b>104.33</b>	<b>106.50</b>	<b>0.5</b>	<b>0.4</b>	<b>0.8</b>	<b>2.1</b>
Personal care	427.1	105.16	104.80	104.76	105.16	104.07	105.60	0.4	0.3	0.0	1.5
Personal effects n.e.c.	106.6	119.38	125.78	123.94	128.69	106.58	125.01	3.8	2.3	7.8	17.3
Social protection	78.2	133.33	133.33	133.33	133.33	133.33	133.33	0.0	0.0	0.0	0.0
Insurance	610.7	100.46	100.46	100.46	100.46	100.41	100.46	0.0	0.0	0.0	0.1
<b>CPI</b>	<b>10,000.0</b>	<b>109.45</b>	<b>109.07</b>	<b>109.50</b>	<b>109.93</b>	<b>107.91</b>	<b>109.30</b>	<b>0.4</b>	<b>0.8</b>	<b>0.4</b>	<b>1.3</b>

Source: Central Bureau of Statistics Aruba

The Period average (last 24 months) change is calculated by comparing the average index for the most recent 12-month period compared with the average index of the preceding 12-month period.



## APPENDIX 2

### Effect on the Consumer Price Index per sector and category for April 2025, Total Population (Jun 2019 = 100)

DESCRIPTION	WEIGHT coefficient	Monthly Mar - Apr	Ytd Dec - Apr	End of period Apr 24 - Apr 25 12 months	Period average Apr 23/24 - Apr 24/25 24 months
<b>Food and non-alcoholic beverages</b>	<b>1,087.7</b>	<b>0.01</b>	<b>-0.13</b>	<b>0.04</b>	<b>0.23</b>
Food	964.1	-0.01	-0.16	-0.01	0.18
Non-alcoholic beverages	123.6	0.02	0.03	0.05	0.05
<b>Alcoholic beverages and tobacco</b>	<b>78.2</b>	<b>0.00</b>	<b>0.01</b>	<b>0.00</b>	<b>0.00</b>
Alcoholic beverages for consumption at home	62.2	0.00	0.00	0.00	0.00
Tobacco	16.0	0.00	0.01	0.01	0.00
<b>Clothing and footwear</b>	<b>276.8</b>	<b>-0.02</b>	<b>-0.03</b>	<b>0.02</b>	<b>0.01</b>
Clothing	212.8	-0.02	-0.04	0.05	0.02
Footwear	64.0	0.00	0.01	-0.02	-0.02
<b>Housing</b>	<b>2,522.2</b>	<b>0.03</b>	<b>0.34</b>	<b>0.07</b>	<b>0.26</b>
Actual rentals for housing	666.7	0.01	0.03	0.10	0.10
Imputed rentals for housing	34.4	0.00	0.00	0.00	0.00
Maintenance and repair of the dwelling	517.0	0.02	0.14	0.11	0.27
Water supply and miscellaneous services relating to the dwelling	463.6	0.00	0.05	0.05	0.02
Electricity, gas and other fuels	840.4	0.00	0.12	-0.18	-0.12
<b>Household operation</b>	<b>929.2</b>	<b>0.29</b>	<b>0.27</b>	<b>0.53</b>	<b>0.00</b>
Furniture, furnishings, carpets and other floor coverings	128.8	-0.14	-0.12	-0.06	0.03
Household textiles	58.6	0.00	0.01	-0.05	-0.05
Household appliances	246.0	0.39	0.35	0.57	-0.09
Glassware, tableware and household utensils	17.2	0.00	-0.02	-0.01	0.00
Tools and equipment for house and garden	58.2	0.05	0.04	0.08	-0.01
Goods and services for routine household maintenance and cleaning	420.5	0.00	0.01	0.00	0.13
<b>Health</b>	<b>223.1</b>	<b>-0.01</b>	<b>0.02</b>	<b>0.09</b>	<b>0.05</b>
Medical products, appliances and equipment	152.3	0.00	0.02	0.09	0.04
Out-patient services	52.4	0.00	0.00	0.00	0.01
Other treatments	7.8	0.00	0.00	0.00	0.00
Health products and services n.e.c.	10.5	-0.01	0.00	0.00	0.00
<b>Transport</b>	<b>1,257.4</b>	<b>-0.06</b>	<b>0.05</b>	<b>-0.40</b>	<b>0.02</b>
Purchase of vehicles	442.6	-0.02	-0.02	0.01	0.19
Operation of personal transport equipment	763.3	-0.10	0.07	-0.49	-0.18
Transport services	51.5	0.05	0.00	0.08	0.00
<b>Communications</b>	<b>849.6</b>	<b>0.11</b>	<b>0.25</b>	<b>0.21</b>	<b>0.46</b>
Telephone and telefax equipment	43.8	0.11	0.25	0.21	0.05
Telephone and telefax services	805.8	0.00	0.00	0.00	0.41
<b>Recreation and culture</b>	<b>1,013.3</b>	<b>-0.04</b>	<b>-0.13</b>	<b>-0.37</b>	<b>-0.23</b>
Audio-visual, photographic and information processing equipment	58.5	0.00	0.01	-0.05	-0.01
Other major durables for recreation and culture	20.0	-0.01	0.02	0.02	0.00
Other recreational items and equipment; gardens and pets	266.6	-0.01	-0.03	-0.09	-0.01
Recreational and cultural services	309.1	0.04	0.07	0.11	0.04
Newspapers, books and stationery	43.7	0.02	0.02	-0.04	-0.04
Holidays	315.4	-0.09	-0.22	-0.30	-0.21
<b>Education</b>	<b>98.0</b>	<b>0.00</b>	<b>0.00</b>	<b>0.00</b>	<b>0.06</b>
Pre primary and primary education	24.0	0.00	0.00	0.00	0.02
Secondary education	43.4	0.00	0.00	0.00	0.04
Post-secondary non-tertiary education	4.6	0.00	0.00	0.00	0.00
Tertiary education	23.6	0.00	0.00	0.00	0.00
Education not definable by level	2.5	0.00	0.00	0.00	0.00
<b>Restaurants and hotels</b>	<b>442.0</b>	<b>0.02</b>	<b>0.09</b>	<b>0.16</b>	<b>0.18</b>
Catering services	429.8	0.00	0.04	0.13	0.15
Accommodation services	12.2	0.02	0.05	0.03	0.03
<b>Miscellaneous goods and services</b>	<b>1,222.6</b>	<b>0.06</b>	<b>0.04</b>	<b>0.09</b>	<b>0.25</b>
Personal care	427.1	0.02	0.01	0.00	0.06
Personal effects n.e.c.	106.6	0.05	0.03	0.09	0.18
Social protection	78.2	0.00	0.00	0.00	0.00
Insurance	610.7	0.00	0.00	0.00	0.00
<b>CPI</b>	<b>10,000.0</b>	<b>0.39</b>	<b>0.79</b>	<b>0.44</b>	<b>1.29</b>

Source: Central Bureau of Statistics Aruba

### APPENDIX 3

#### Monthly & Yearly Changes (%) and effect in the Food & catering services for April 2025, Total Population (Jun 2019 = 100)

DESCRIPTION	WEIGHT coefficient	% Change		Effect	
		Monthly Mar - Apr	End of period Apr 24 - Apr 25 12 months	Monthly Mar - Apr	End of period Apr 24 - Apr 25 12 months
<b>Food &amp; catering services</b>	<b>1,517.5</b>	<b>0.0</b>	<b>1.1</b>	<b>0.003</b>	<b>0.175</b>
<b>Food at home</b>	<b>1,087.7</b>	<b>0.1</b>	<b>0.4</b>	<b>0.008</b>	<b>0.044</b>
<b>Bread and cereals</b>	<b>178.1</b>	<b>-0.1</b>	<b>0.6</b>	<b>-0.001</b>	<b>0.011</b>
Rice	23.5	0.1	0.6	0.000	0.002
Bread	72.1	-0.5	-0.4	-0.004	-0.003
Pasta products	9.2	1.0	0.6	0.001	0.001
Other cereals and cereal products	73.3	0.2	1.6	0.001	0.012
<b>Meat</b>	<b>242.5</b>	<b>-0.4</b>	<b>1.9</b>	<b>-0.010</b>	<b>0.049</b>
Bovine	67.3	1.0	1.1	0.007	0.008
Swine	25.5	1.8	2.3	0.005	0.006
Poultry	75.7	-2.8	4.2	-0.024	0.033
Other meat and meat preparations	74.0	0.3	0.2	0.002	0.001
<b>Fish and other seafood</b>	<b>49.0</b>	<b>0.9</b>	<b>0.9</b>	<b>0.004</b>	<b>0.005</b>
Fish and seafood preparations	49.0	0.9	0.9	0.004	0.005
<b>Milk, cheese and eggs</b>	<b>135.3</b>	<b>-0.7</b>	<b>-0.3</b>	<b>-0.012</b>	<b>-0.005</b>
Cheese	55.4	0.4	1.3	0.003	0.008
Eggs	16.6	-6.5	4.6	-0.019	0.012
Milk	40.0	-0.1	-2.4	-0.001	-0.011
Other milk products	23.3	2.1	-5.7	0.005	-0.014
<b>Oils and fats</b>	<b>32.2</b>	<b>-0.4</b>	<b>2.6</b>	<b>-0.001</b>	<b>0.010</b>
Corn oil	2.8	-1.0	-8.1	0.000	-0.003
Butter and margarine	9.2	-0.2	2.5	0.000	0.002
Other oils and fats	20.1	-0.4	4.4	-0.001	0.010
<b>Fruit</b>	<b>97.6</b>	<b>-0.7</b>	<b>-4.8</b>	<b>-0.007</b>	<b>-0.046</b>
Oranges	9.4	0.4	-6.1	0.000	-0.008
Bananas and plantains	19.9	-4.3	-5.2	-0.007	-0.008
Apples	9.3	-0.3	-2.4	0.000	-0.002
Avocado	5.0	-1.7	-2.2	-0.001	-0.001
Grapes	9.2	-1.2	-16.8	-0.001	-0.019
Nuts	11.9	0.2	1.7	0.000	0.002
Lemons and mandarins	6.0	-5.7	-1.8	-0.002	-0.001
Cherries and strawberries	8.8	7.2	-15.6	0.007	-0.019
Melons and watermelons	7.7	1.5	1.5	0.001	0.001
Papayas and pineapples	6.9	-5.0	10.6	-0.003	0.006
Other fruits and fruit products	3.5	-2.6	10.8	-0.001	0.003
<b>Potatoes and other tubers</b>	<b>18.2</b>	<b>3.3</b>	<b>12.1</b>	<b>0.005</b>	<b>0.017</b>
Potatoes	12.2	9.1	15.3	0.008	0.012
Other tubers	2.0	0.4	4.4	0.000	0.001
Sweet potatoes and yucca	4.0	-5.5	11.0	-0.002	0.004
<b>Vegetables</b>	<b>89.1</b>	<b>1.1</b>	<b>-6.5</b>	<b>0.008</b>	<b>-0.052</b>
Lettuce	6.8	6.7	-48.3	0.001	-0.015
Tomatoes	9.7	5.6	-12.3	0.005	-0.013
Onions and garlic	18.7	4.2	-9.4	0.006	-0.016
Celery and broccoli	15.3	0.1	-4.1	0.000	-0.005
Other vegetables	15.3	-2.9	-5.7	-0.004	-0.008
Other preserved or processed vegetables	8.4	0.2	1.4	0.000	0.001
Frozen vegetable mixtures	14.8	-0.1	1.8	0.000	0.003
<b>Sugar, jam, honey and other confectionery</b>	<b>42.0</b>	<b>0.1</b>	<b>-0.5</b>	<b>0.001</b>	<b>-0.002</b>
Sugar	12.1	-1.6	-2.9	-0.003	-0.005
Jams and jellies	2.5	2.9	0.0	0.001	0.000
Other confectionery products	27.5	0.9	0.8	0.003	0.002
<b>Food products n.e.c.</b>	<b>80.1</b>	<b>0.3</b>	<b>1.0</b>	<b>0.003</b>	<b>0.009</b>
Other food products	80.1	0.3	1.0	0.003	0.009
<b>Non-alcoholic beverages</b>	<b>123.6</b>	<b>1.3</b>	<b>3.6</b>	<b>0.018</b>	<b>0.049</b>
Coffee and tea	20.9	3.6	7.1	0.009	0.016
Other non-alcoholic beverages	14.6	-0.1	0.1	0.000	0.000
Soft and sports drinks	31.0	0.1	-2.6	0.000	-0.009
Fruit juices	57.1	1.3	6.6	0.009	0.042
<b>Food away from home</b>	<b>429.8</b>	<b>-0.1</b>	<b>2.7</b>	<b>-0.004</b>	<b>0.131</b>
Food and beverage consumption away from home	429.8	-0.1	2.7	-0.004	0.131
<b>Other goods and services</b>	<b>8,482.5</b>	<b>0.5</b>	<b>0.3</b>	<b>0.388</b>	<b>0.266</b>
Other goods	4,735.8	1.0	0.3	0.467	0.161
Other services	3,746.7	-0.2	0.3	-0.079	0.104
<b>CPI</b>	<b>10,000</b>	<b>0.4</b>	<b>0.4</b>	<b>0.391</b>	<b>0.440</b>

Source: Central Bureau of Statistics Aruba

# APPENDIX 4

## Overview of the Consumer Price Index (CPI), 2024 - 2025 (Jun 2019 = 100)

				YEAR: 2025				YEAR: 2024				
Base	Base	Base	Base	CHANGE				CHANGE				
Jun-19	Jun-19	Jun-19	Jun-19	Monthly	Year-to	Yearly	Period	Monthly	Year-to	Yearly	Period	
=100.0	=100.0	=100.0	=100.0		date	12 months	average		date	12 months	average	
							24 months				24 months	
	<u>Jan.'24</u>	<u>Dec.'23</u>	<u>Jan.'25</u>	<u>Dec.'24</u>								
<u>Total Population</u>	108.31	108.79	108.65	109.07	-0.4	-0.4	0.3	1.6	-0.4	-0.4	1.5	2.9
Low Income	109.03	109.37	109.40	109.69	-0.3	-0.3	0.3		-0.3	-0.3	2.1	
High Income	107.96	108.48	108.25	108.73	-0.4	-0.4	0.3		-0.5	-0.5	1.3	
	<u>Feb.'24</u>	<u>Jan.'24</u>	<u>Feb.'25</u>	<u>Jan.'25</u>								
<u>Total Population</u>	108.57	108.31	109.09	108.65	0.4	0.02	0.5	1.6	0.2	-0.2	0.9	2.4
Low Income	109.29	109.03	109.74	109.40	0.3	0.04	0.4		0.2	-0.1	1.5	
High Income	108.20	107.96	108.74	108.25	0.5	0.00	0.5		0.2	-0.3	0.6	
	<u>Mar.'24</u>	<u>Feb.'24</u>	<u>Mar.'25</u>	<u>Feb.'25</u>								
<u>Total Population</u>	109.37	108.57	109.50	109.09	0.4	0.4	0.1	1.4	0.7	0.5	1.8	2.1
Low Income	109.97	109.29	110.11	109.74	0.3	0.4	0.1		0.6	0.5	2.3	
High Income	109.05	108.20	109.17	108.74	0.4	0.4	0.1		0.8	0.5	1.5	
	<u>Apr.'24</u>	<u>Mar.'24</u>	<u>Apr.'25</u>	<u>Mar.'25</u>								
<u>Total Population</u>	109.45	109.37	109.93	109.50	0.4	0.8	0.4	1.3	0.1	0.6	2.2	1.9
Low Income	109.87	109.97	110.70	110.11	0.5	0.9	0.8		-0.1	0.5	2.4	
High Income	109.25	109.05	109.53	109.17	0.3	0.7	0.3		0.2	0.7	2.1	
	<u>May'24</u>	<u>Apr.'24</u>	<u>May'25</u>	<u>Apr.'25</u>								
<u>Total Population</u>	109.41	109.45							-0.03	0.6	2.6	1.8
Low Income	109.92	109.87							0.05	0.5	2.9	
High Income	109.14	109.25							-0.1	0.6	2.5	
	<u>Jun'24</u>	<u>May'24</u>	<u>Jun'25</u>	<u>May'25</u>								
<u>Total Population</u>	108.72	109.41							-0.6	-0.1	2.4	1.7
Low Income	109.39	109.92							-0.5	0.0	2.9	
High Income	108.37	109.14							-0.7	-0.1	2.1	
	<u>Jul'24</u>	<u>Jun'24</u>	<u>Jul'25</u>	<u>Jun'25</u>								
<u>Total Population</u>	109.20	108.72							0.4	0.4	2.8	1.8
Low Income	109.80	109.39							0.4	0.4	2.4	
High Income	108.87	108.37							0.5	0.4	3.0	
	<u>Aug.'24</u>	<u>Jul'24</u>	<u>Aug.'25</u>	<u>Jul'25</u>								
<u>Total Population</u>	110.01	109.20							0.7	1.1	2.9	2.0
Low Income	110.50	109.80							0.6	1.0	2.4	
High Income	109.74	108.87							0.8	1.2	3.1	
	<u>Sep.'24</u>	<u>Aug.'24</u>	<u>Sep.'25</u>	<u>Aug.'25</u>								
<u>Total Population</u>	109.58	110.01							-0.4	0.7	1.5	2.0
Low Income	110.18	110.50							-0.3	0.7	1.2	
High Income	109.26	109.74							-0.4	0.7	1.6	
	<u>Oct.'24</u>	<u>Sep.'24</u>	<u>Oct.'25</u>	<u>Sep.'25</u>								
<u>Total Population</u>	109.19	109.58							-0.4	0.4	1.0	2.0
Low Income	109.94	110.18							-0.2	0.5	0.9	
High Income	108.79	109.26							-0.4	0.3	1.0	
	<u>Nov.'24</u>	<u>Oct.'24</u>	<u>Nov.'25</u>	<u>Oct.'25</u>								
<u>Total Population</u>	109.25	109.19							0.1	0.4	0.8	1.9
Low Income	109.72	109.94							-0.2	0.3	0.6	
High Income	108.98	108.79							0.2	0.5	0.9	
	<u>Dec.'24</u>	<u>Nov.'24</u>	<u>Dec.'25</u>	<u>Nov.'25</u>								
<u>Total Population</u>	109.07	109.25							-0.2	0.3	0.3	1.7
Low Income	109.69	109.72							0.0	0.3	0.3	
High Income	108.73	108.98							-0.2	0.2	0.2	

Source: Central Bureau of Statistics Aruba

## APPENDIX 5

### Prices of crude oil, utilities and gasoline, 2001 - 2025

		Electricity components							
Month	Crude Crude oil <sup>1</sup>	Total energy charge <sup>2</sup>			Fixed charge <sup>3</sup>	Electricity <sup>4</sup>	Water <sup>5</sup>	Gasoline <sup>6</sup>	Diesel <sup>6</sup>
		≤ 500 kWh	501 - 1000 kWh	> 1001 kWh					
Average 2001	26.01	24.59	22.09	22.09	0.00	172.79	89.40	128.34	90.10
Average 2002	26.06	24.89	22.39	22.39	0.00	174.91	90.82	127.20	88.68
Average 2003	34.49	27.02	24.52	24.52	0.00	190.38	99.21	139.21	100.18
Average 2004	41.31	27.18	24.68	24.68	0.00	191.57	100.02	152.51	113.05
Average 2005	56.36	31.10	28.60	28.60	0.00	219.97	113.69	167.74	136.04
Average 2006	66.12	35.91	33.41	33.41	0.00	254.88	128.70	176.22	149.77
Average 2007	72.08	36.59	34.09	34.09	0.00	259.84	133.59	200.43	168.38
Average 2008	99.87	45.67	43.17	43.17	0.00	325.67	161.80	228.19	214.48
Average 2009	61.46	37.33	34.83	34.83	0.00	265.17	139.60	175.15	142.53
Average 2010	79.22	43.92	41.42	41.42	0.00	312.98	159.21	193.43	163.22
Average 2011	94.74	47.58	47.57	47.57	0.00	345.14	177.47	229.48	203.46
Average 2012	94.25	47.68	51.21	53.46	0.00	353.85	171.13	235.53	210.07
Average 2013	98.00	41.10	44.90	58.40	0.00	306.75	137.05	229.48	205.83
Average 2014	93.49	42.58	45.32	57.77	0.63	315.71	137.05	224.24	200.21
Average 2015	48.71	47.02	46.56	55.87	2.50	342.59	137.05	179.74	147.80
Average 2016	43.17	40.40	41.80	47.64	12.50	308.76	137.05	165.87	131.12
Average 2017	50.85	34.52	35.72	45.93	12.50	265.65	137.05	180.79	147.69
Average 2018	65.08	34.52	35.72	45.93	12.50	265.65	137.05	204.95	177.59
Average 2019	56.84	34.52	35.72	45.93	12.50	265.65	137.05	202.67	176.53
Average 2020	39.25	31.09	31.99	42.09	12.50	240.09	137.05	177.93	143.26
Average 2021	67.78	31.09	31.99	42.09	12.50	240.09	137.05	223.34	181.95
Average 2022	95.16	34.19	35.18	46.29	12.50	262.78	150.17	275.90	263.17
Average 2023	77.67	36.71	37.78	49.70	12.50	281.24	168.73	260.17	235.78
January-24	73.56	35.80	36.84	48.47	12.50	274.57	168.73	232.90	213.60
February-24	76.93	35.80	36.84	48.47	12.50	274.57	168.73	245.40	227.80
March-24	81.01	35.80	36.84	48.47	12.50	274.57	168.73	255.60	236.40
April-24	85.50	35.80	36.84	48.47	12.50	274.57	168.73	266.90	230.10
May-24	80.31	35.80	36.84	48.47	12.50	274.57	168.73	269.00	228.20
June-24	79.89	35.80	36.84	48.47	12.50	274.57	168.73	257.60	217.70
July-24	82.57	35.80	36.84	48.47	12.50	274.57	168.73	251.60	218.50
August-24	76.79	35.80	36.84	48.47	12.50	274.57	168.73	257.60	220.70
September-24	70.30	35.80	36.84	48.47	12.50	274.57	168.73	251.20	210.20
October-24	72.48	35.80	36.84	48.47	12.50	274.57	168.73	234.90	201.40
November-24	69.60	34.31	35.31	46.45	12.50	263.67	168.73	238.40	206.20
December-24	69.94	34.31	35.31	46.45	12.50	263.67	168.73	233.70	205.60
Average 2024	76.57	35.55	36.59	48.13	12.50	272.76	168.73	249.57	218.03
January-25	75.32	34.31	35.31	46.45	12.50	263.67	168.73	233.50	204.90
February-25	71.56	34.31	35.31	46.45	12.50	263.67	168.73	241.70	218.20
March-25	68.06	34.31	35.31	46.45	12.50	263.67	168.73	241.00	216.10
April-25	64.22	34.31	35.31	46.45	12.50	263.67	168.73	239.90	206.20
May-25									
June-25									
July-25									
August-25									
September-25									
October-25									
November-25									
December-25									
Average 2025	69.79	34.31	35.31	46.45	12.50	263.67	168.73	239.03	211.35
Source: Central Bureau of Statistics Aruba									

Source: Central Bureau of Statistics Aruba

<sup>1</sup> Average West Texas Intermediate (WTI) crude oil price per barrel in US\$ (Source: U.S. Energy Information Administration)

<sup>2</sup> Total energy charge in Afl. cents per kWh

<sup>3</sup> Fixed charge was introduced in October 2014 at Afl. 2.50

<sup>4</sup> Electricity price in Afl. is based on an average household usage of 725.5 kWh

<sup>5</sup> Water price in Afl. is based on an average household usage

<sup>6</sup> Gasoline and diesel prices in Afl. cents per liter

APPENDIX 6

