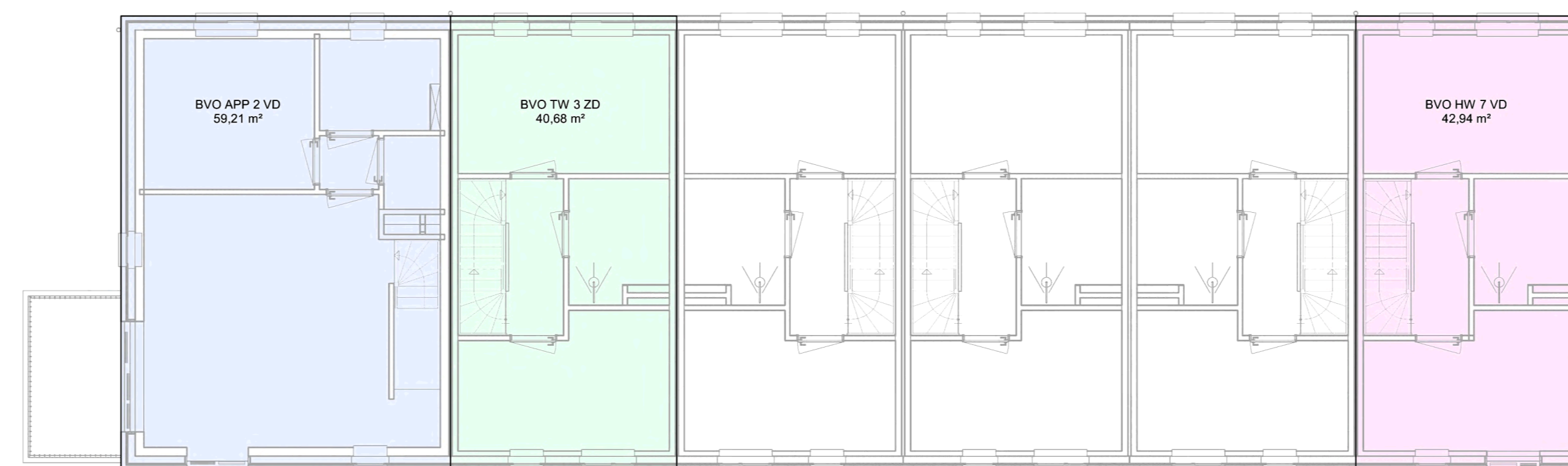


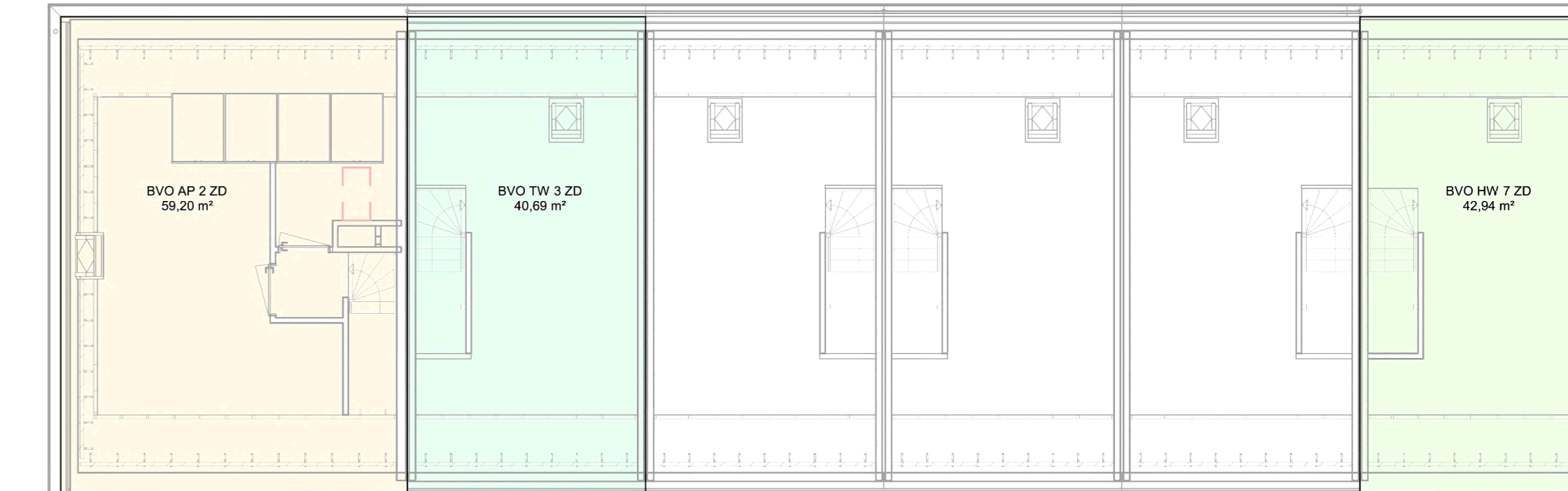
Begane grond BVO

BVO

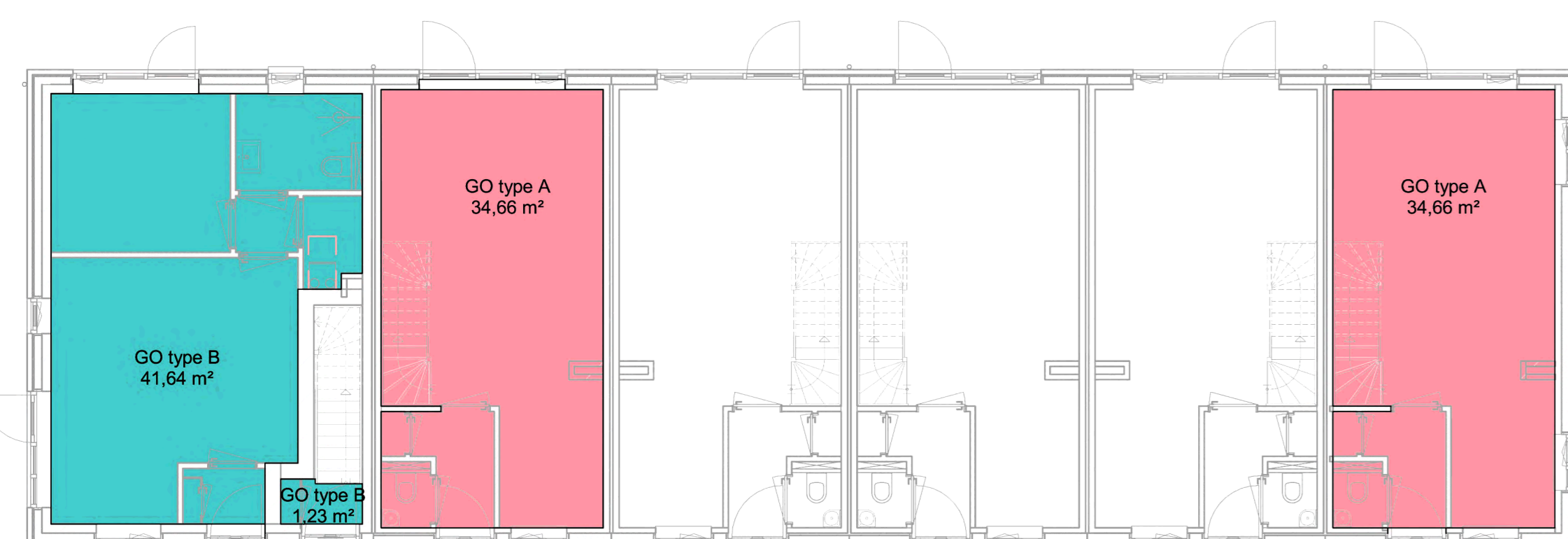
- BVO AP 2 ZD
- BVO APP 1 BG
- BVO APP 2 BG
- BVO APP 2 VD
- BVO BG
- BVO HK 7 BG
- BVO HW 7 VD
- BVO HW 7 ZD
- BVO TW 3 BG
- BVO TW 3 ZD
- BVO VD
- BVO ZD



BB_BVO_02-VD



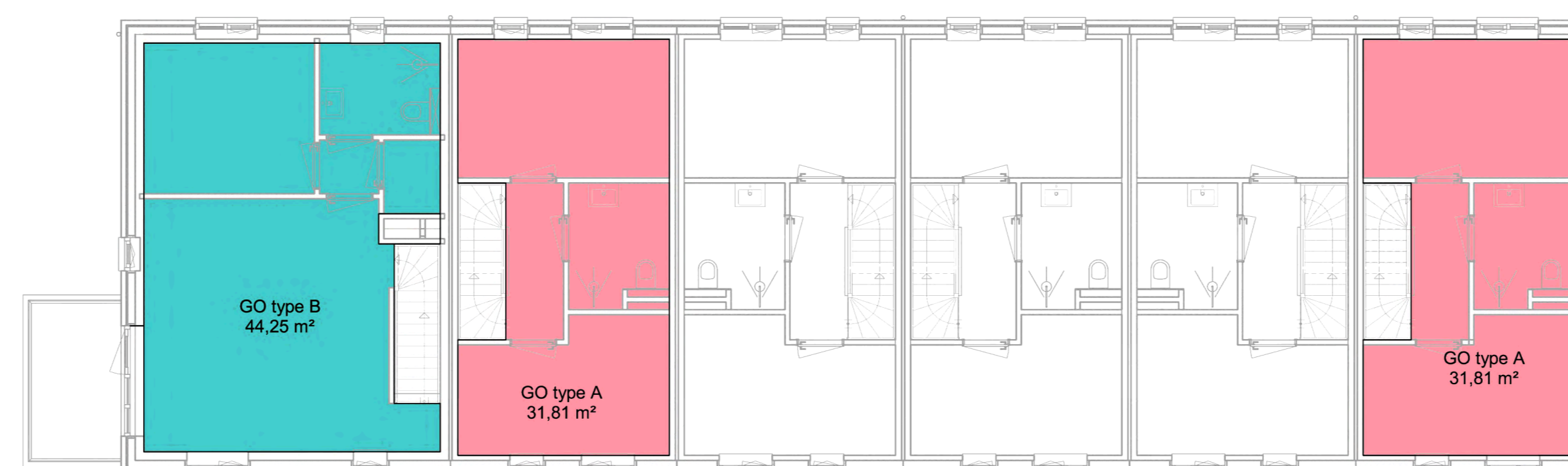
BB_BVO_03-ZD



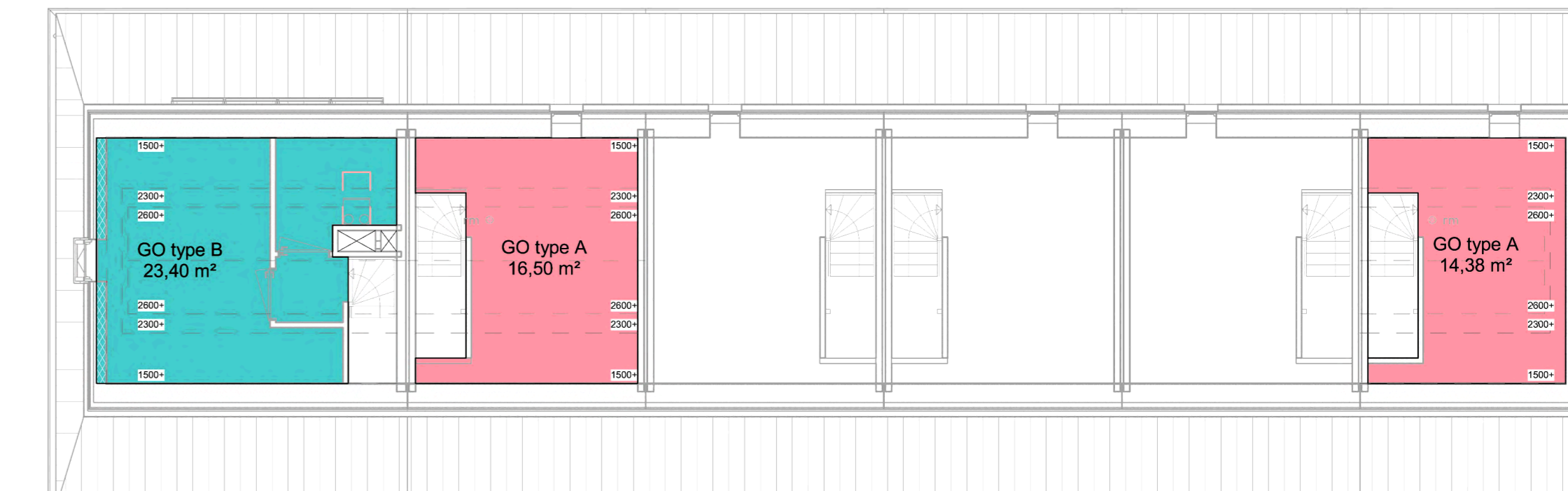
Begane grond GO

GO / Overige gebruiksfunctie

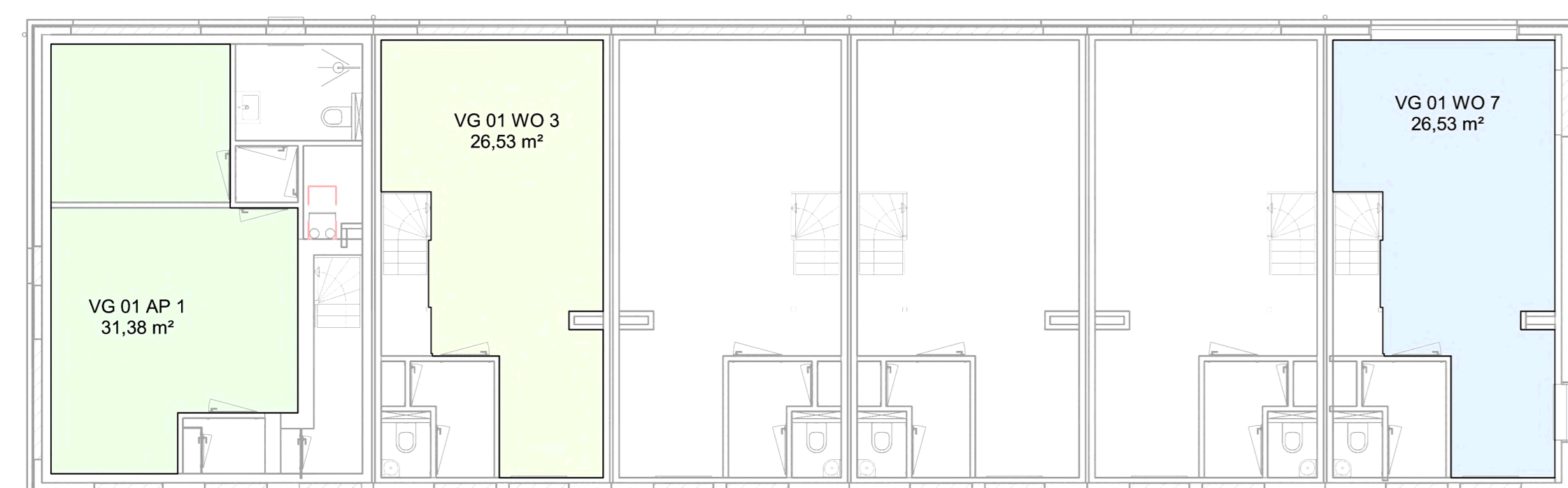
- GO type A
- GO type B
- GO type C
- Overige gebruiksfunctie A
- Overige gebruiksfunctie B



BB_GBO_VD



BB_GBO_ZD



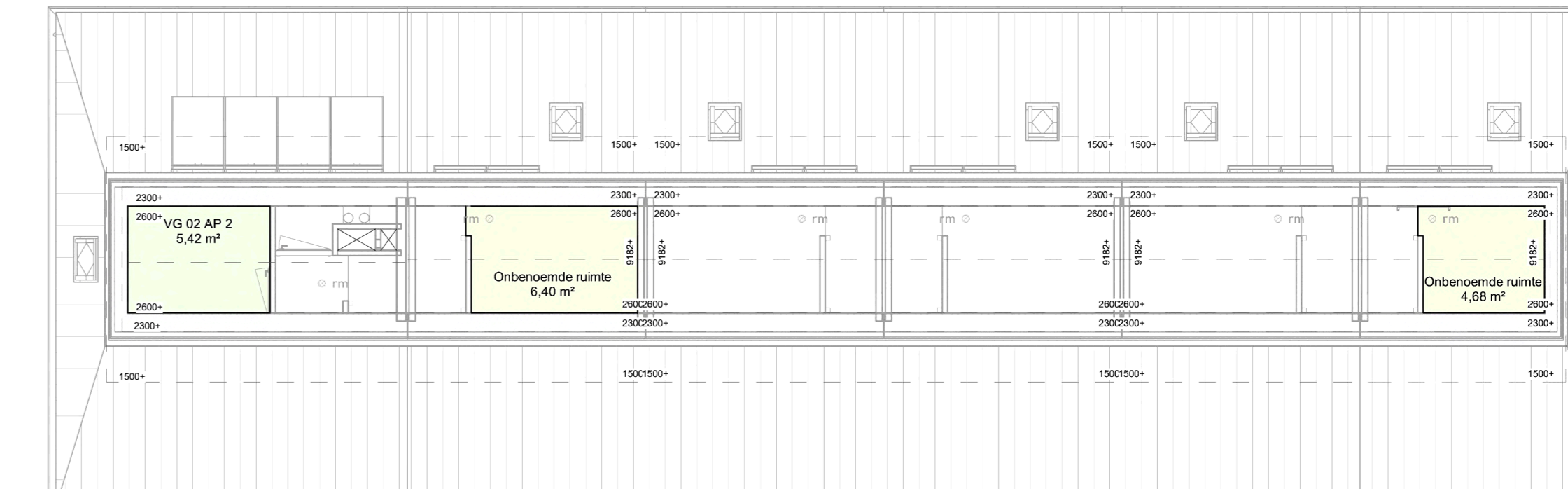
Begane grond VG

VG

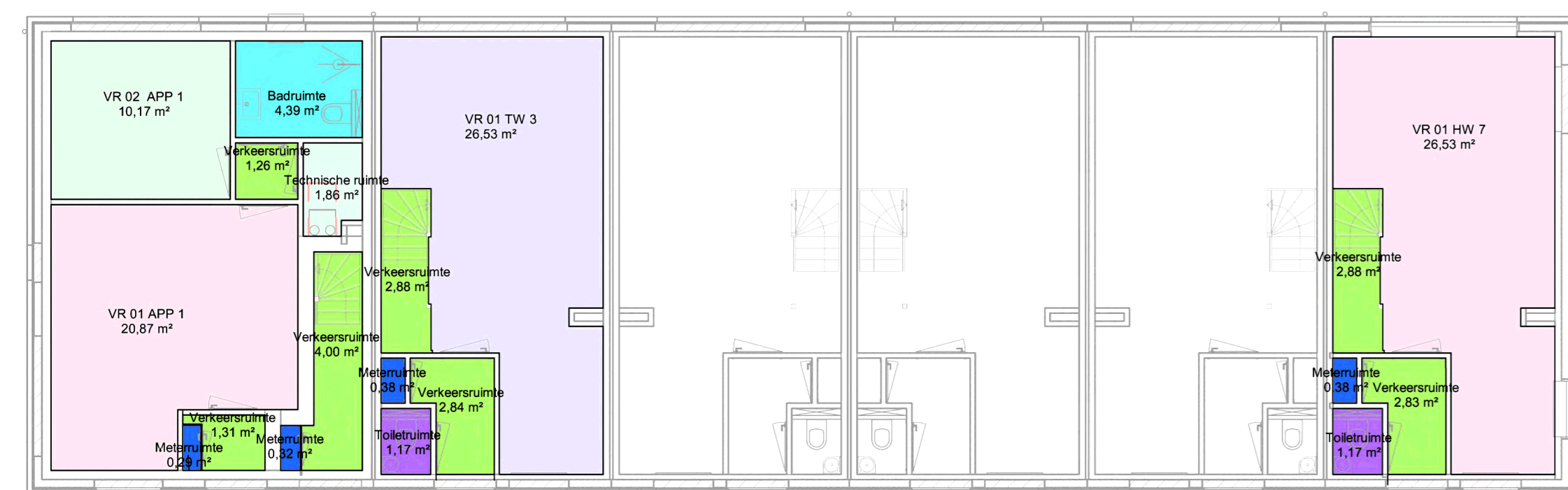
- Onbenoemde ruimte
- Verblifgebied 1
- Verblifgebied 2
- VG 01 AP 1
- VG 01 AP 2
- VG 01 WO 3
- VG 01 WO 7
- VG 02 AP 2
- VG 02 WO 3
- VG 02 WO 7
- VG 03 WO 3
- VG 03 WO 7



BB_VG_VD



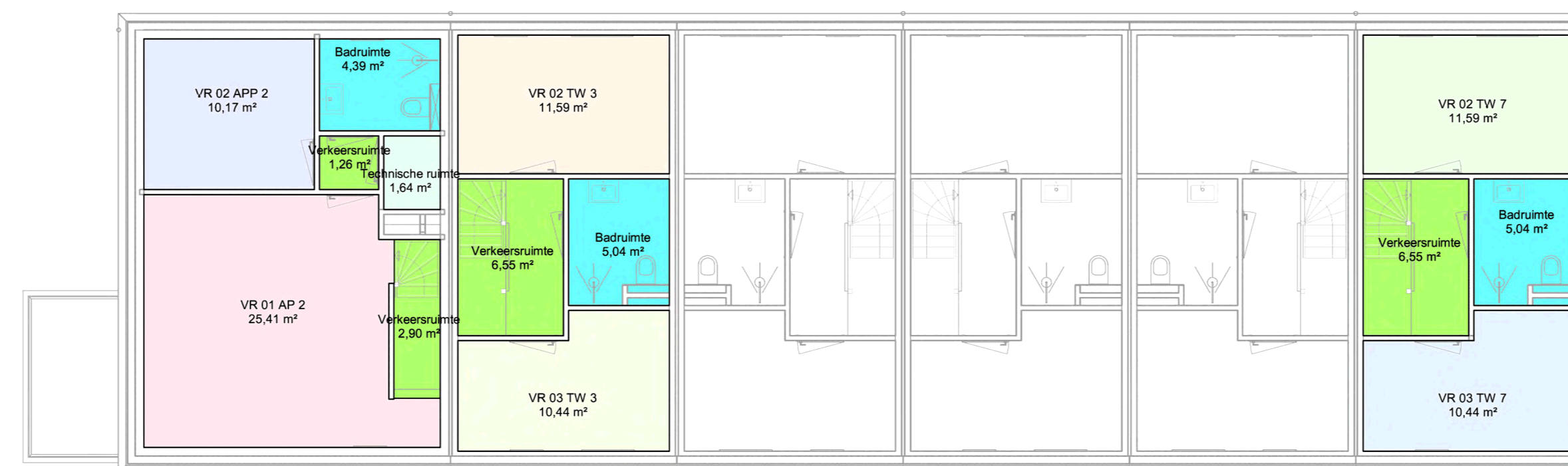
BB_VG_ZD



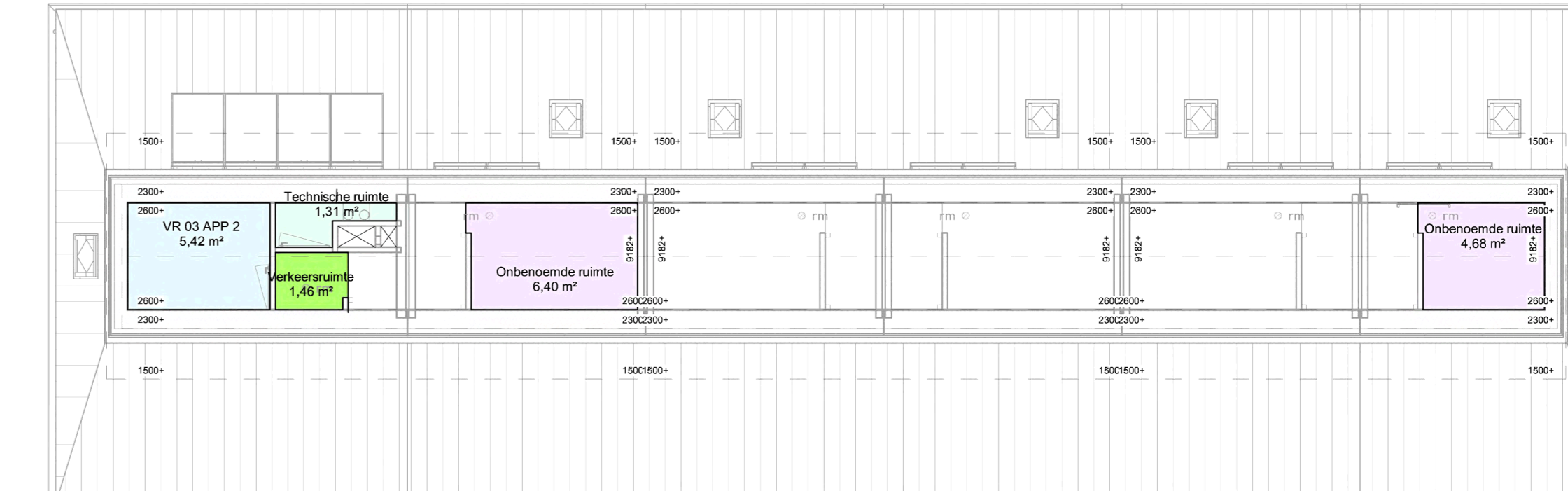
Begane grond VR

Ruimten

- VR 01 - A
- VR 02 - A
- VR 03 - A
- VR 04 - A
- VR 05 - A
- VR 01 - B
- VR 02 - B
- Onbenoemde ruimte
- Technische ruimte
- VR 03 - B
- VR 04 - B
- VR 05 - B
- VR 01 AP 1
- VR 01 HW 7
- VR 01 TW 3
- VR 02 APP 1
- VR 02 APP 2
- VR 02 TW 3
- VR 02 TW 7
- VR 03 APP 2
- VR 03 TW 3
- VR 03 TW 7



BB_VR_VD



BB_VR_ZD

Bunderstraat 107, 5491 KC SCHUNDEL
Telefoon 0111-22113
E-mail omni@omniarchitecten.nl
www.omniarchitecten.nl

Onderwerp: Bouwbesluit oppervlakten Rijwoningen		Bladnr.: 00-ALG #
Opdrachtgever: Park Loobagh Weebosserweg te Bergeijk	Werknr.: 00-006	
Opdrachtgever: Symphony Estates Parkaan 54A 5613BH Eindhoven	Werknr.: 2213_SYM	
Projectarchitect: Omni Architecten	Datums: 29-11-2023	
Schaal: 1:100	Formaat: A0	Gewijzigd: 29-11-2023