

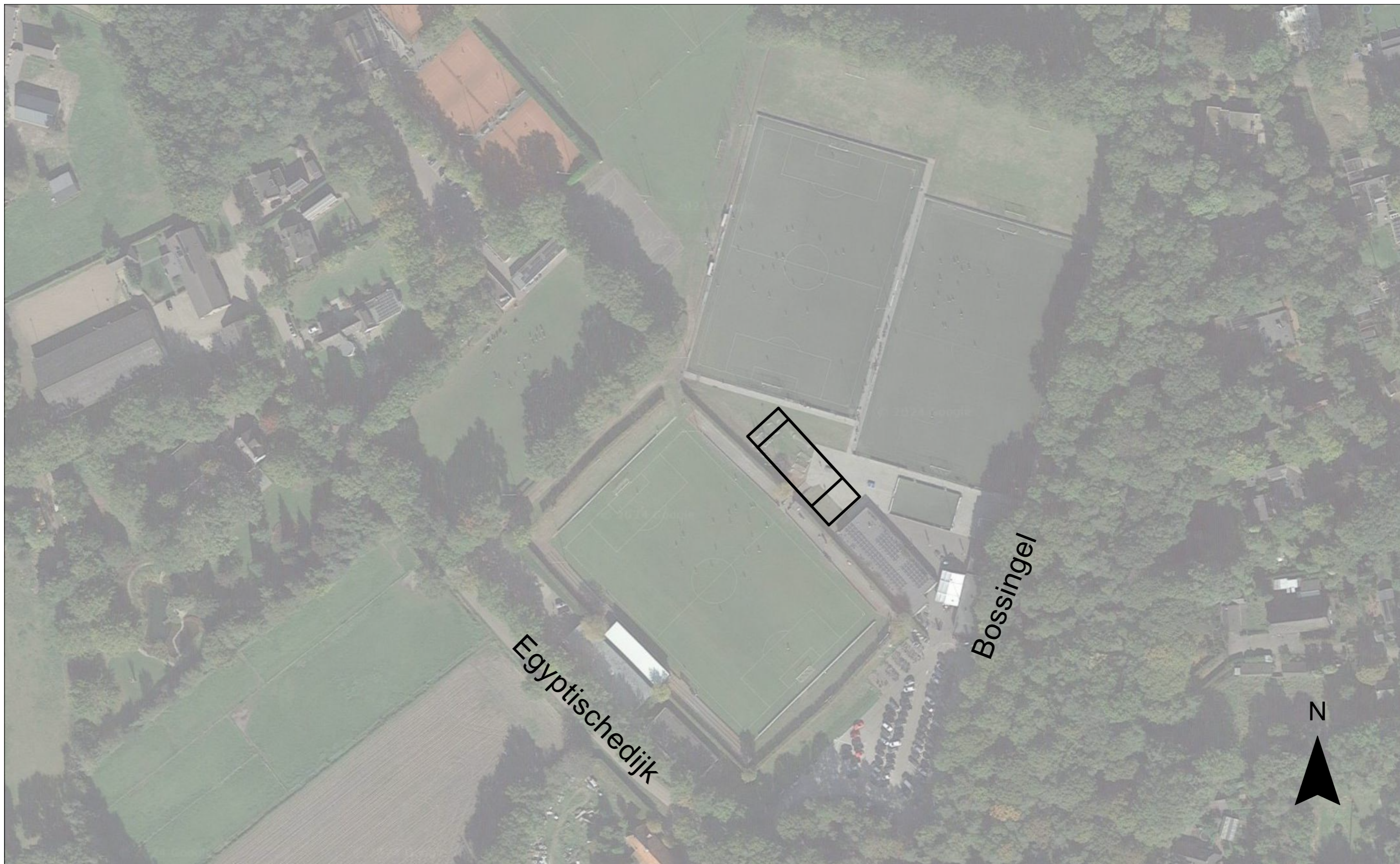


Verenigingsgebouw Bladel - Voorontwerp VO-03

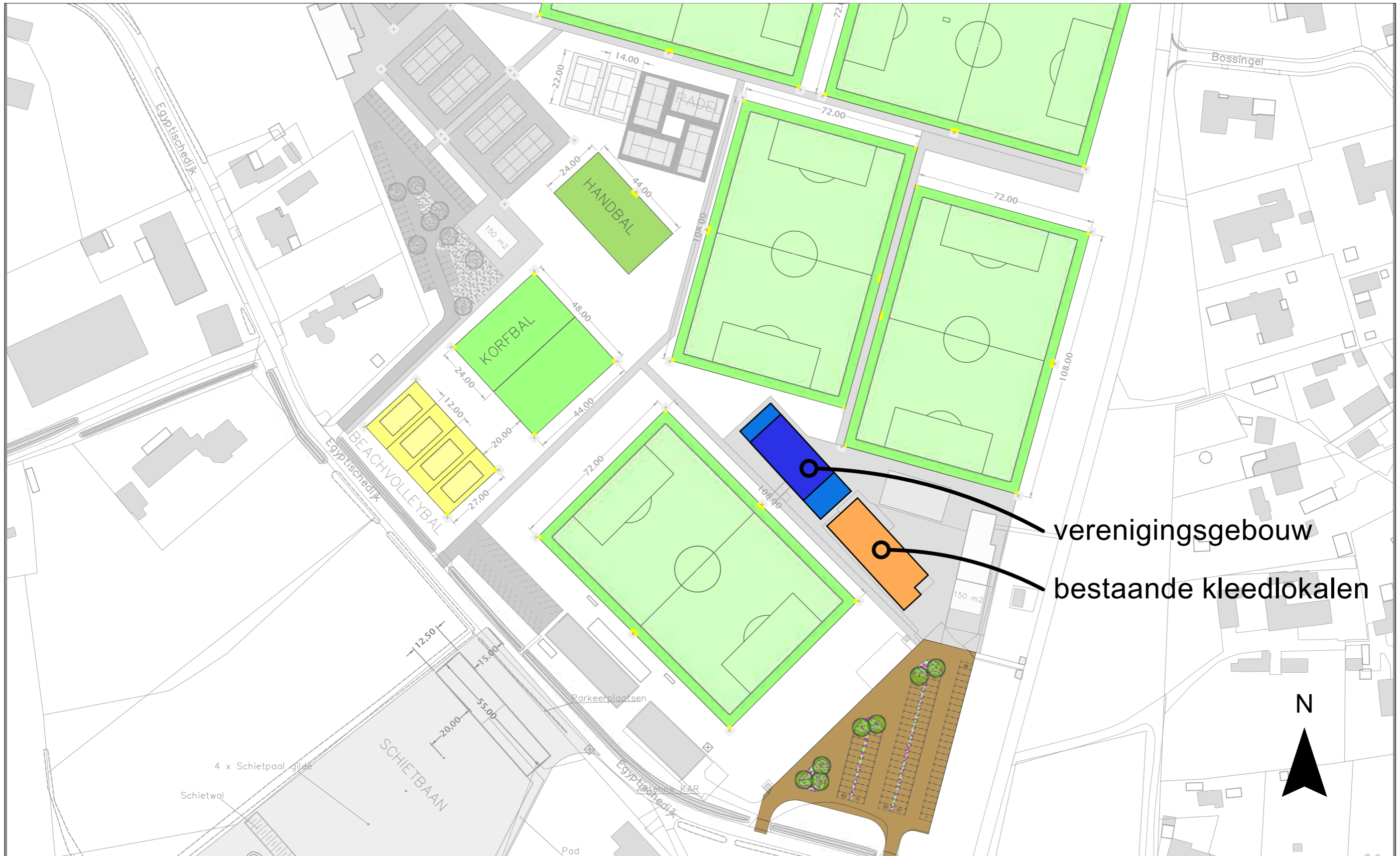
07724
voorontwerp VO-03
16 december 2024

vastgesteld op 24 december 2024

Luchtfoto

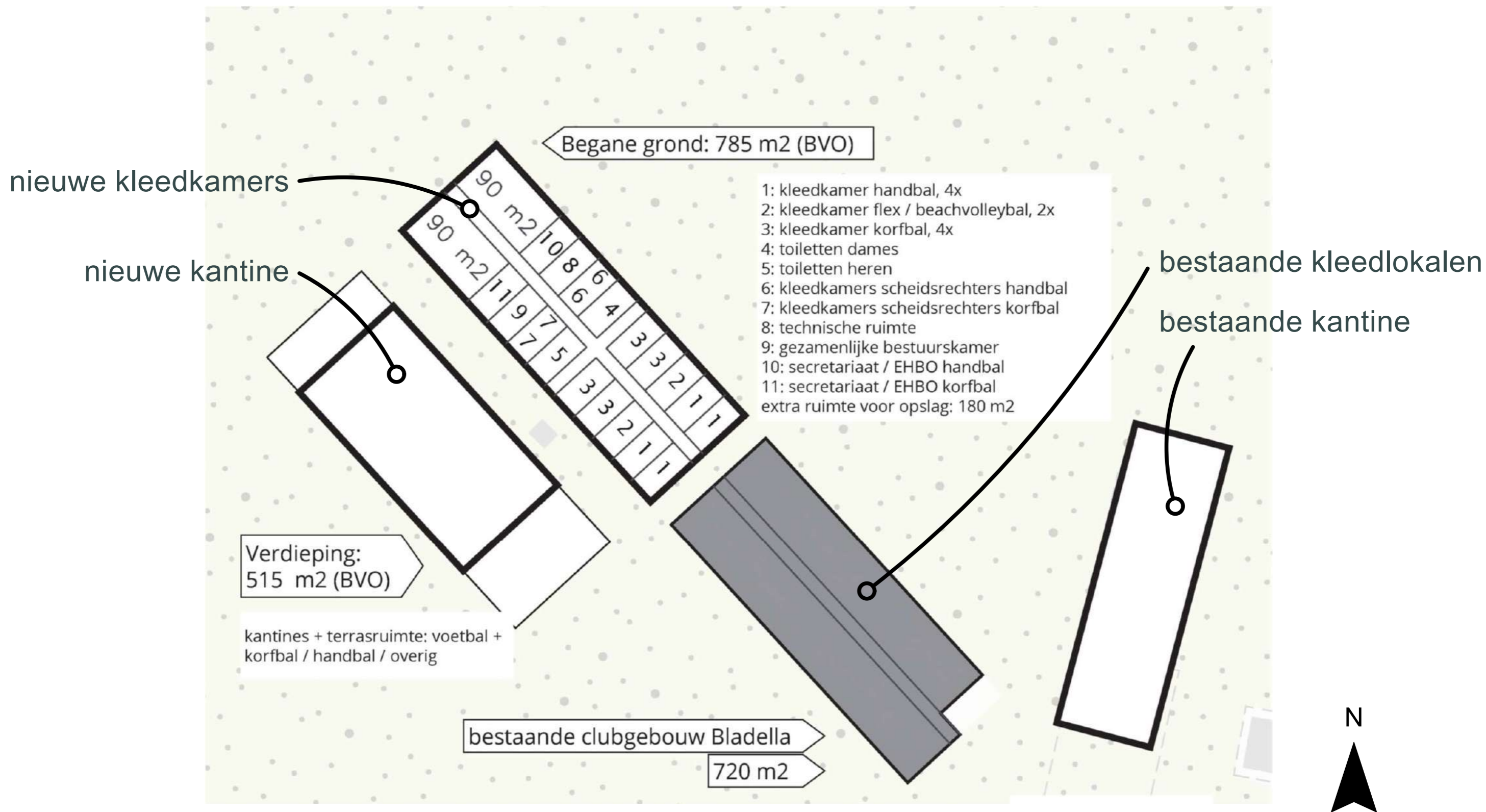


Situatie nieuw

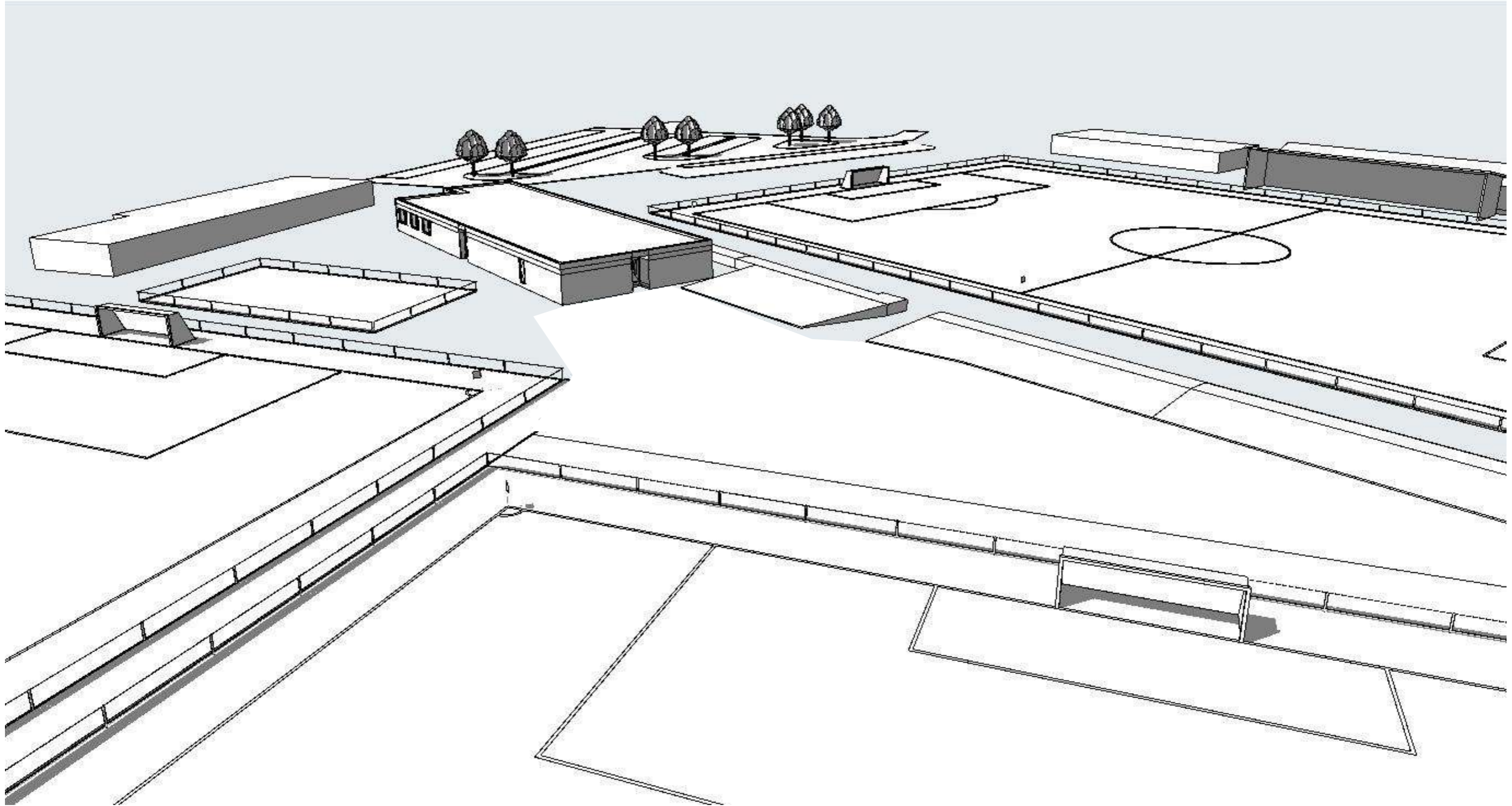


Programma

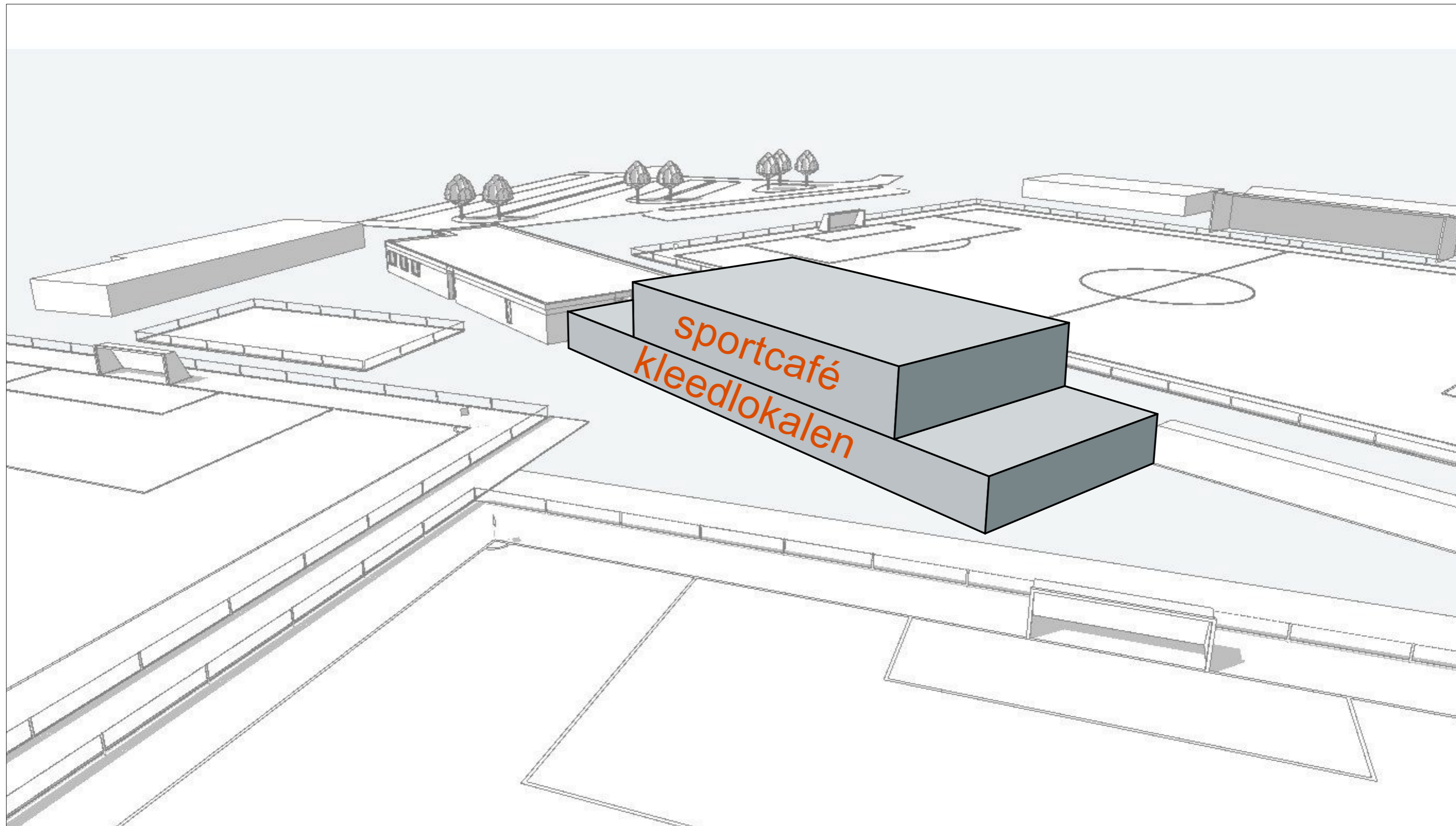
1:500



bestaande situatie



programma

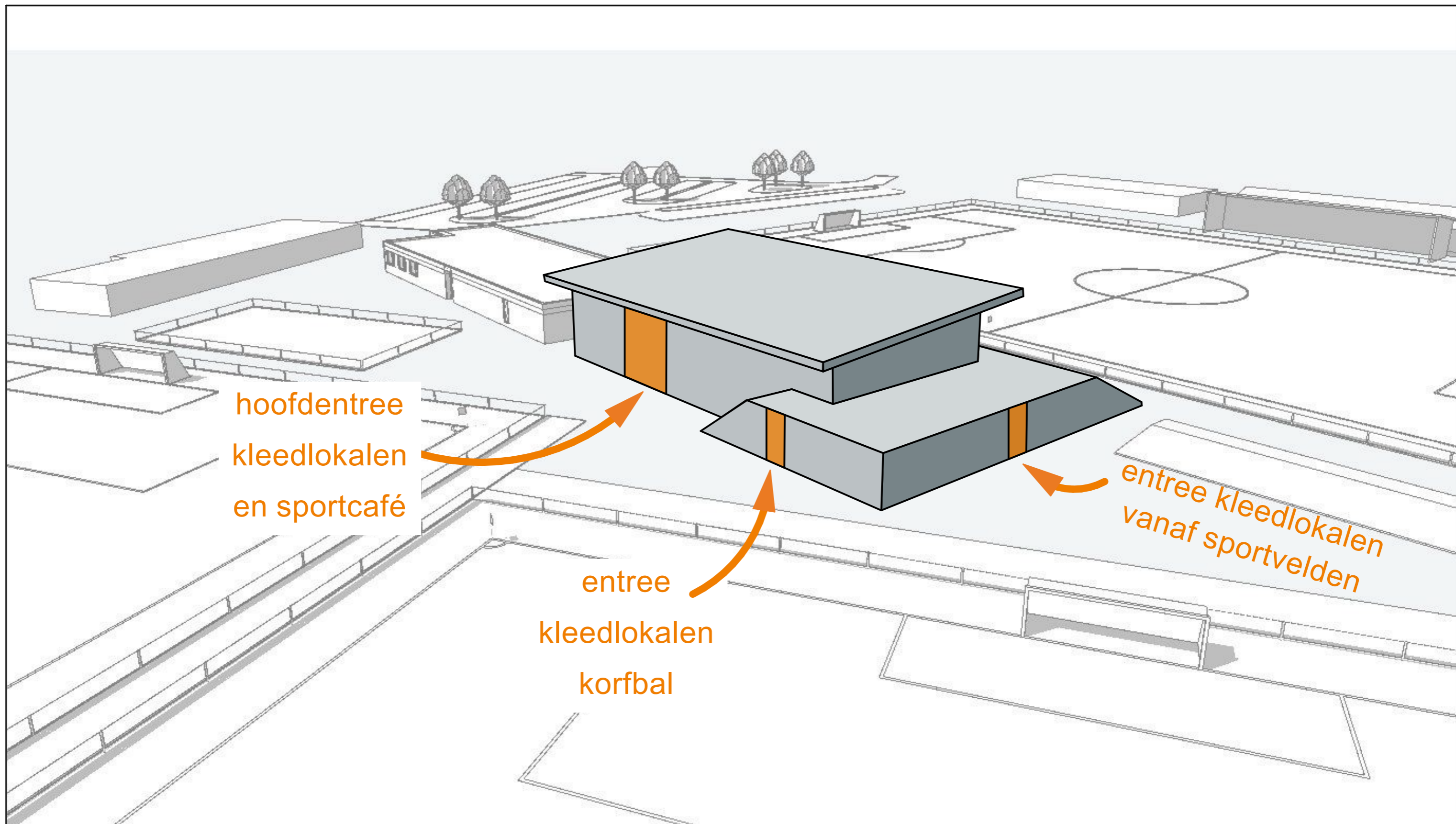


ontwerpuitgangspunten

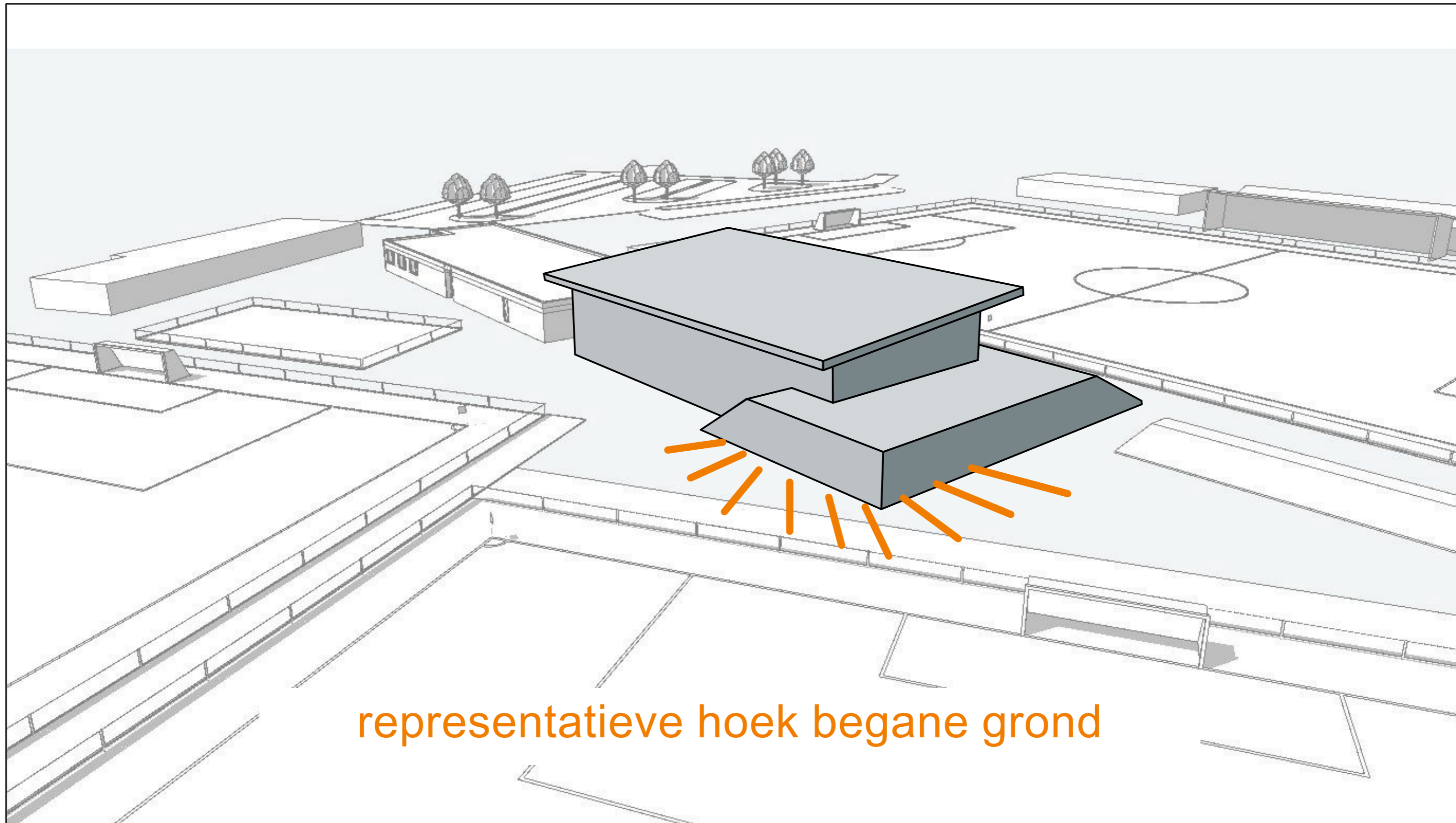


zichtbaar vanaf betreden sportpark

ontwerpuitgangspunten



ontwerpuitgangspunten



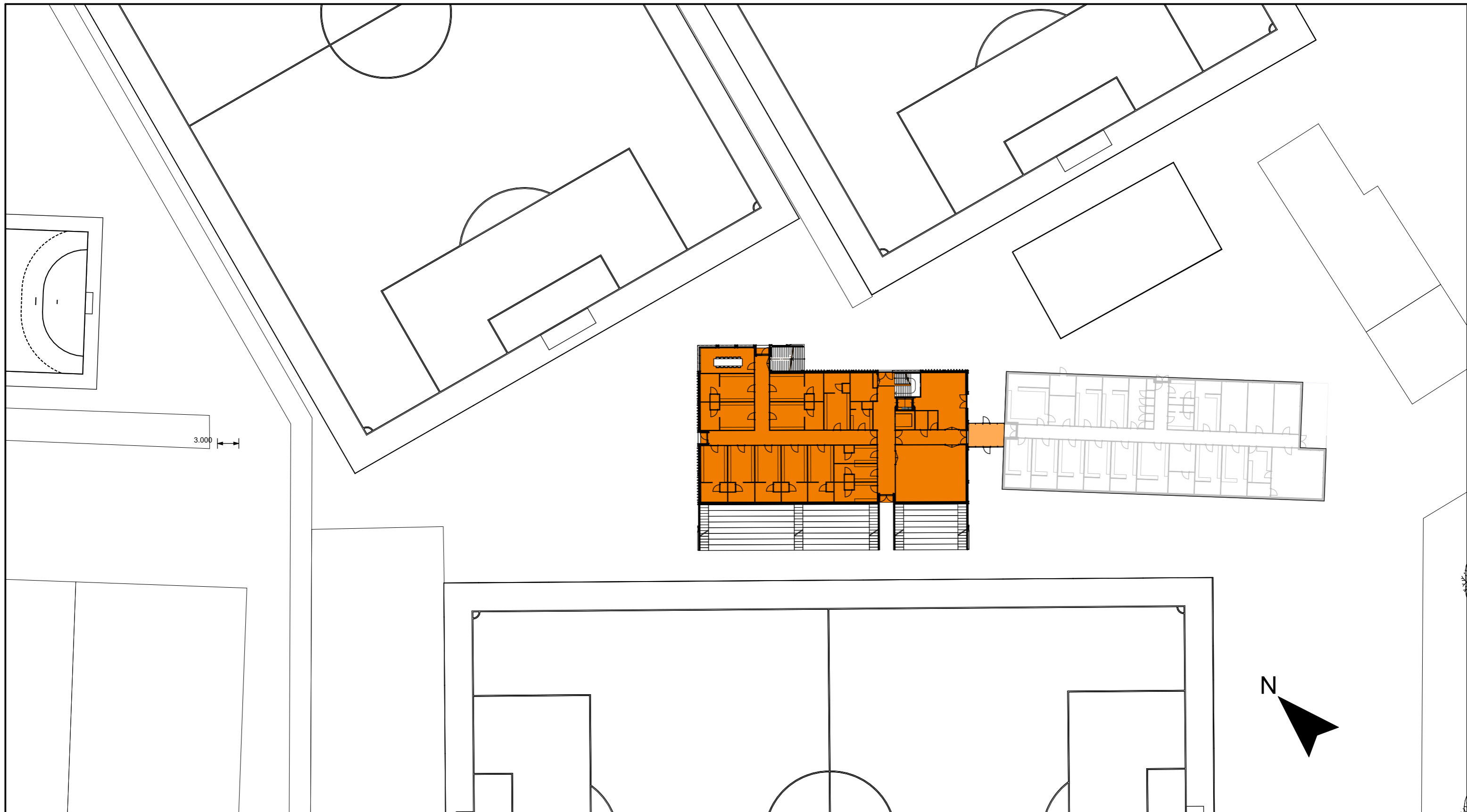
representatieve hoek begane grond

ontwerpuitgangspunten



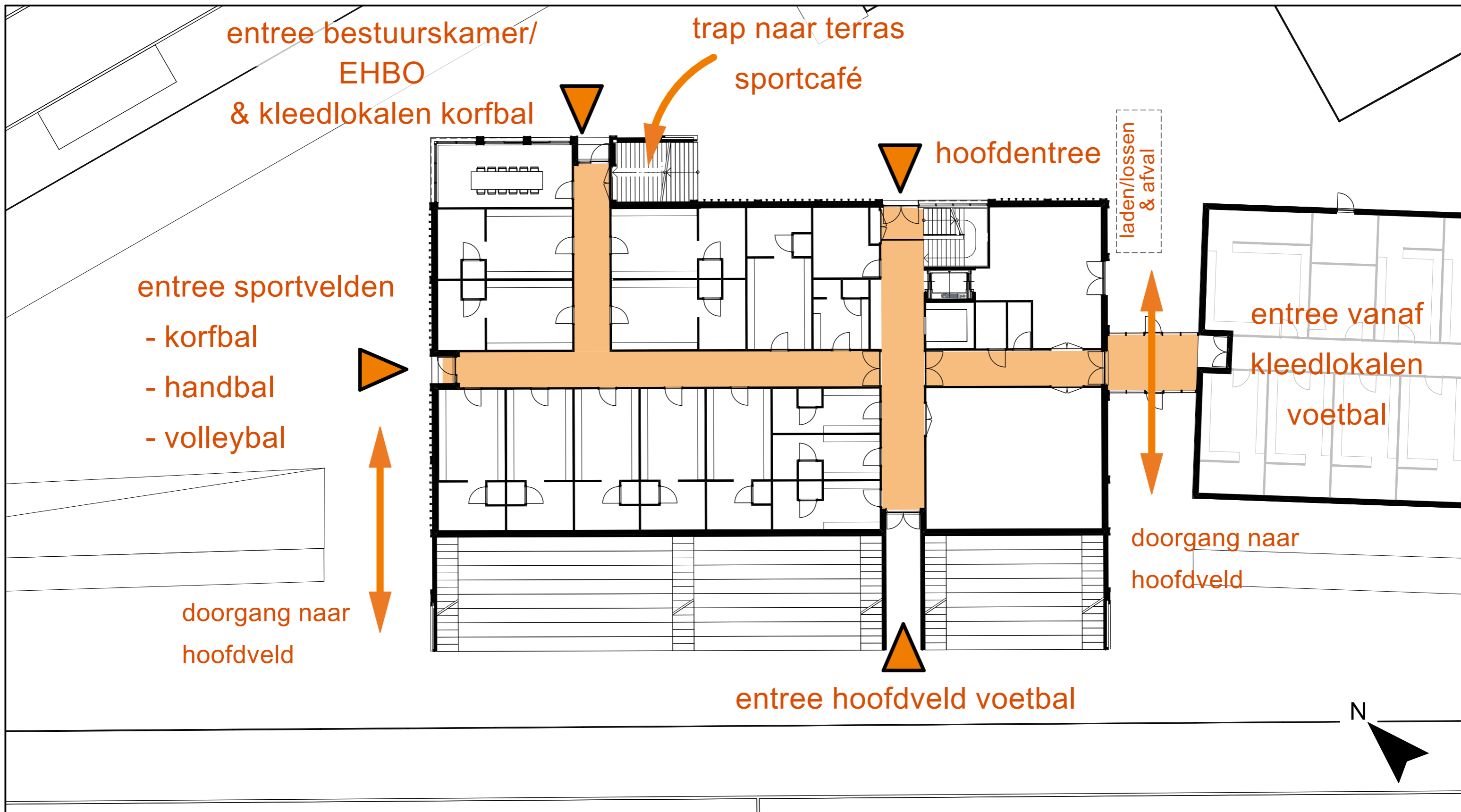
uitzicht over sportpark





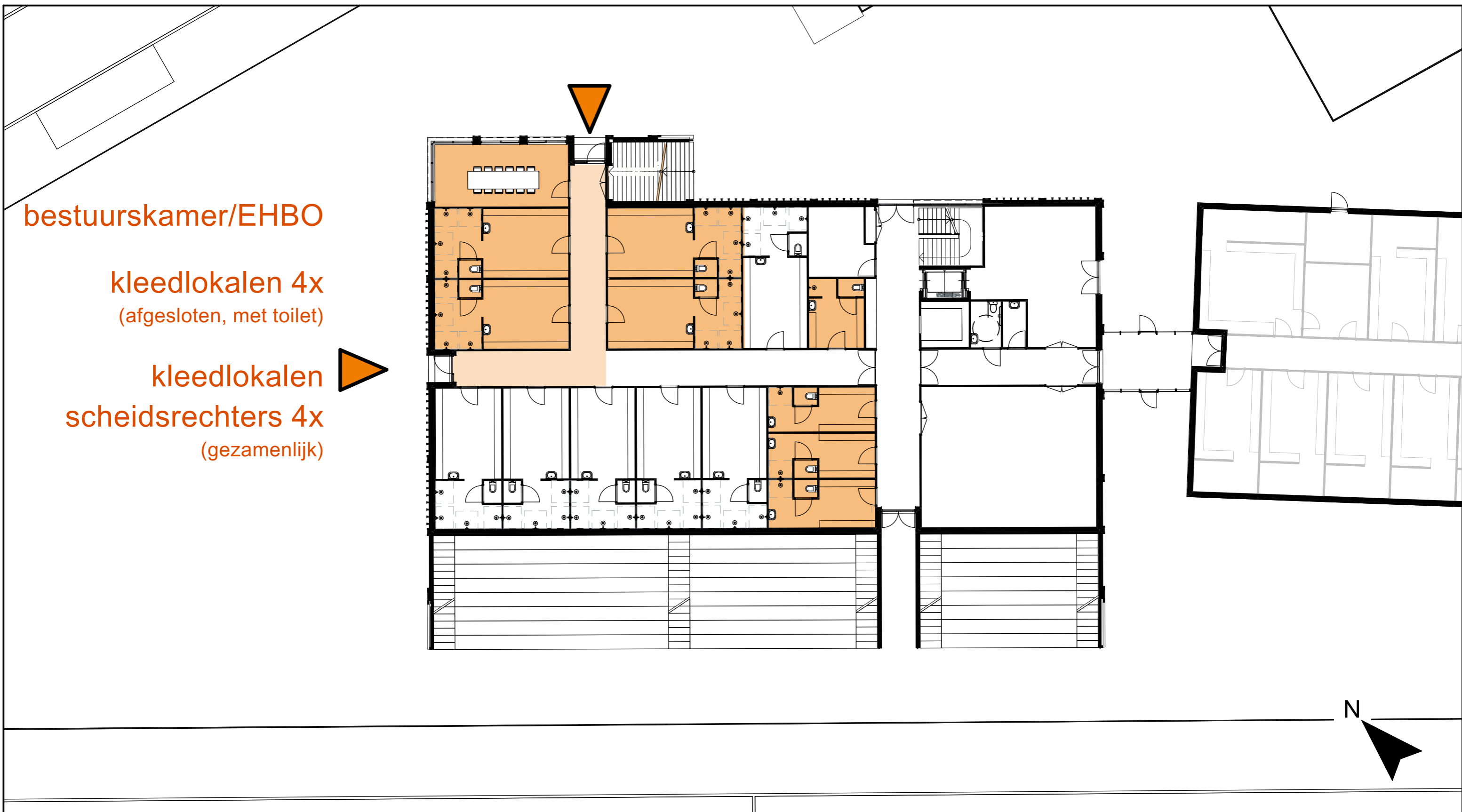
begane grond

1:200



Korfbal

1:200



Handbal

1:200

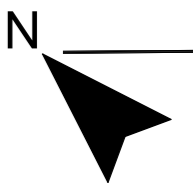
EHBO
kleedlokalen 4x
(met toilet)
kleedlokalen
scheidsrechters 4x
(gezamenlijk)

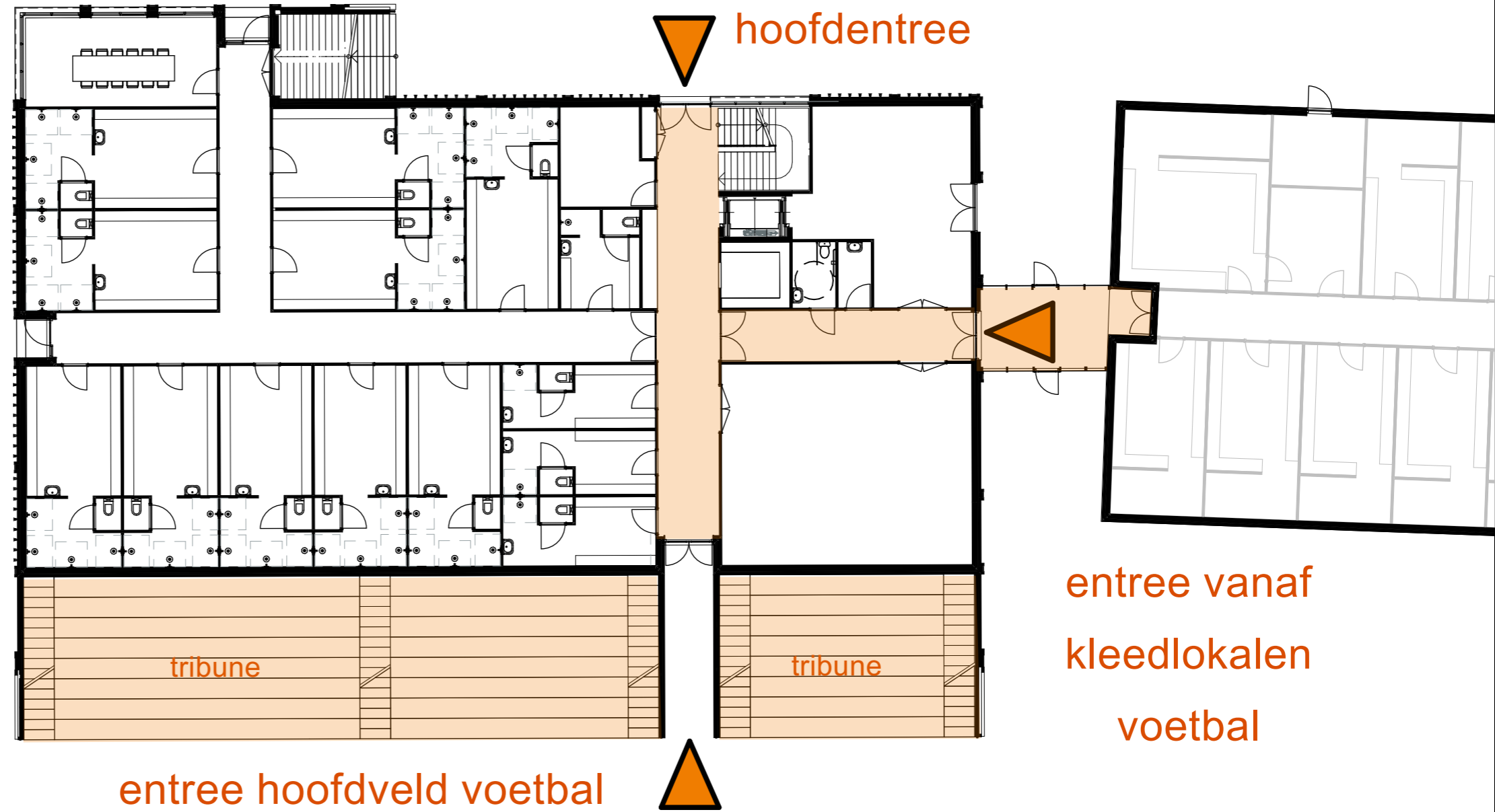


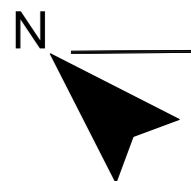
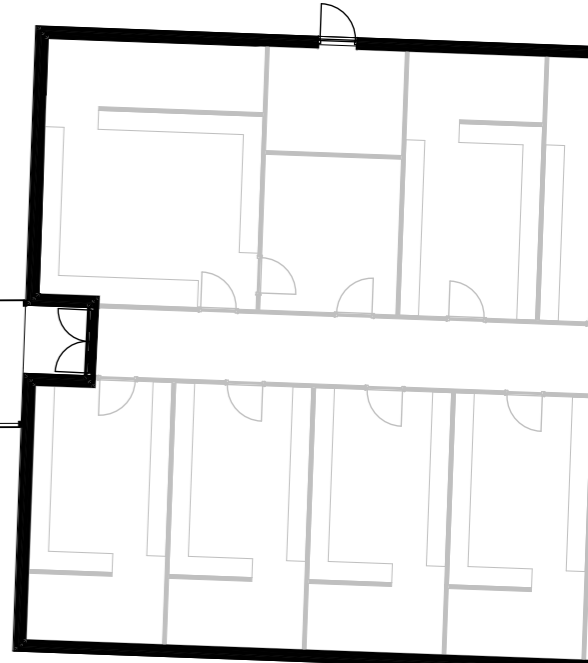
Volleybal

1:200

EHBO
kleedlokalen 2x
(met toilet)







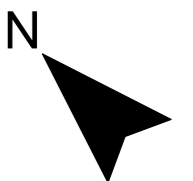
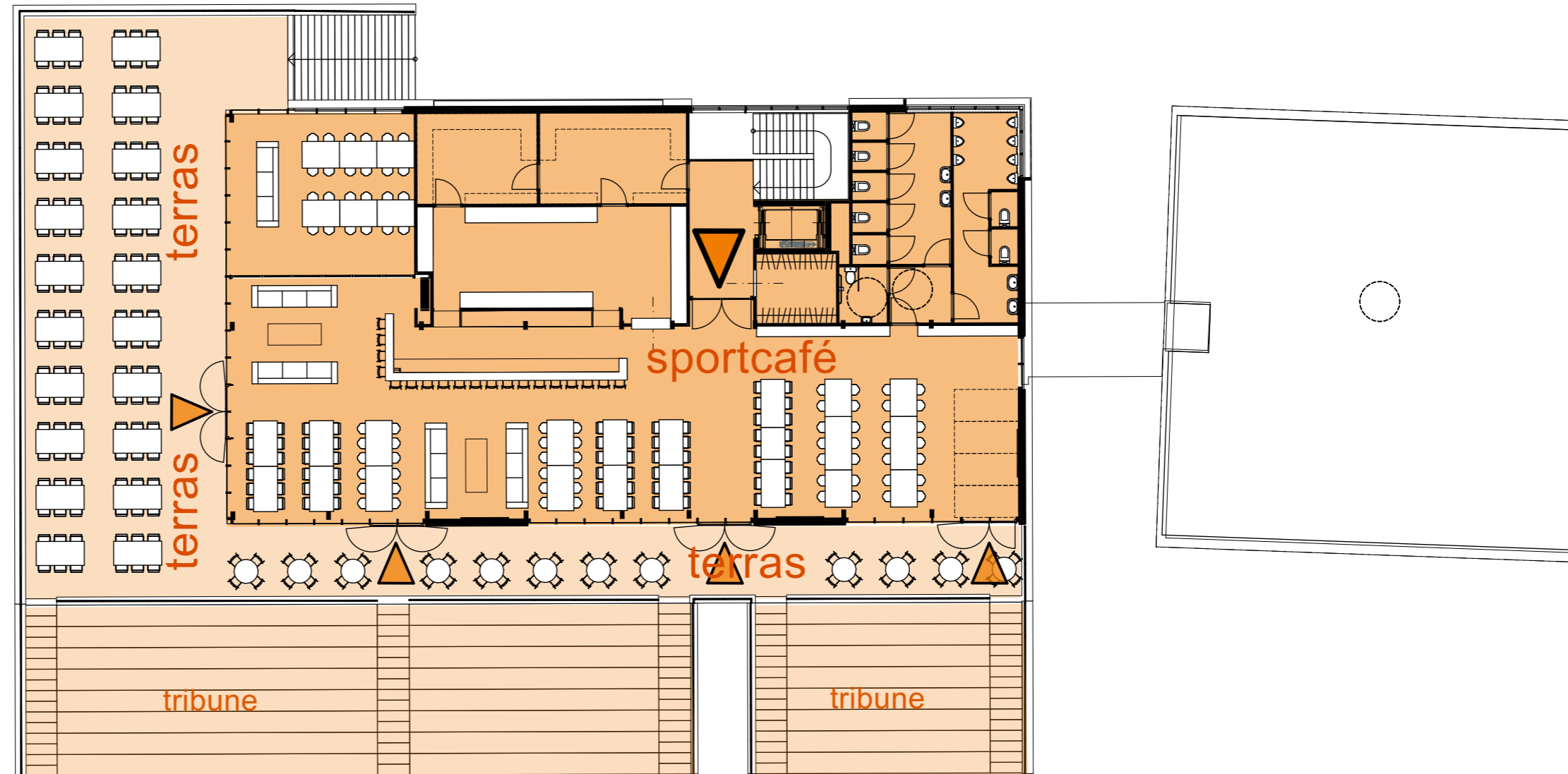
Begane grond totaal

N 1:100



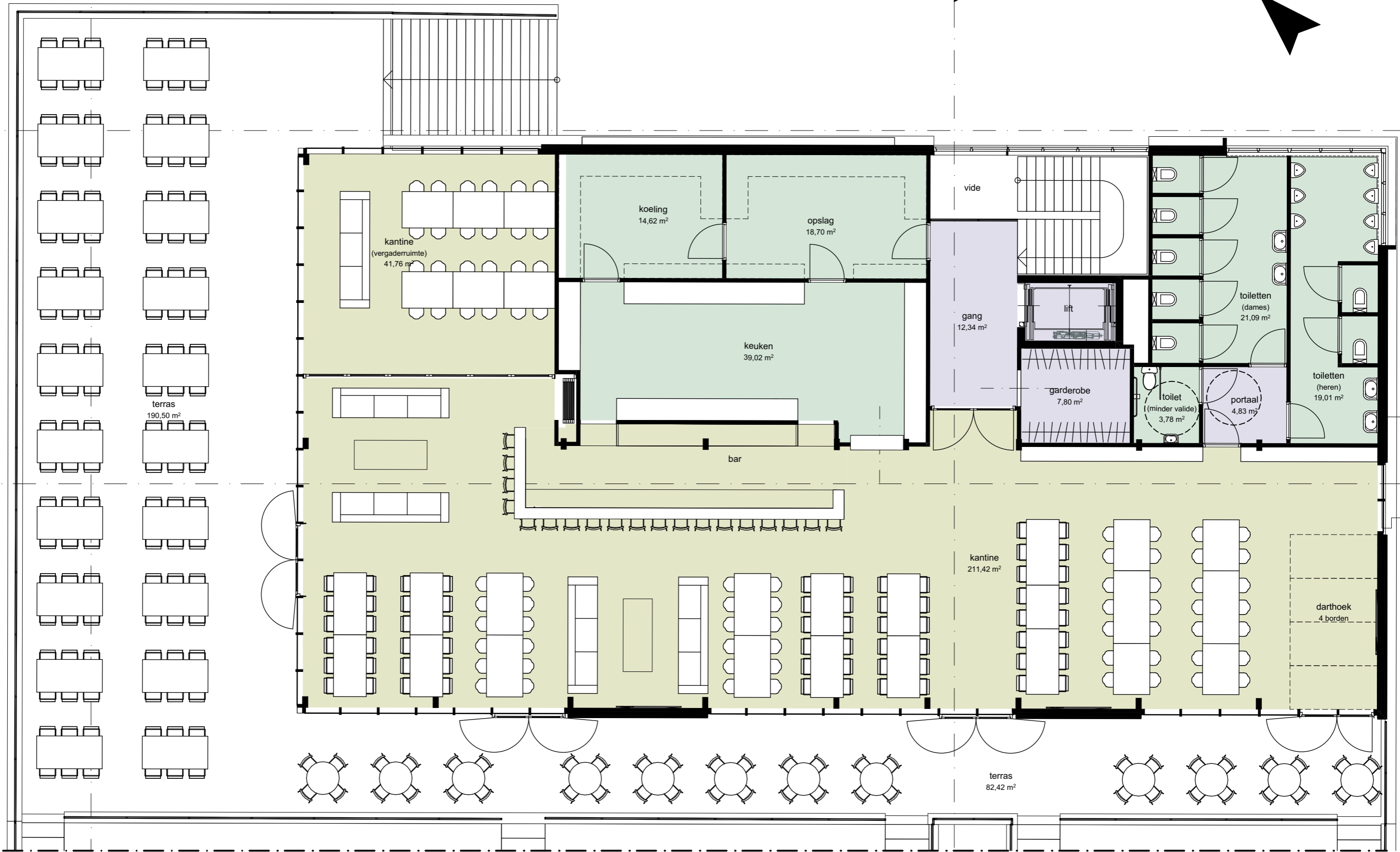
Sportcafé

1:200



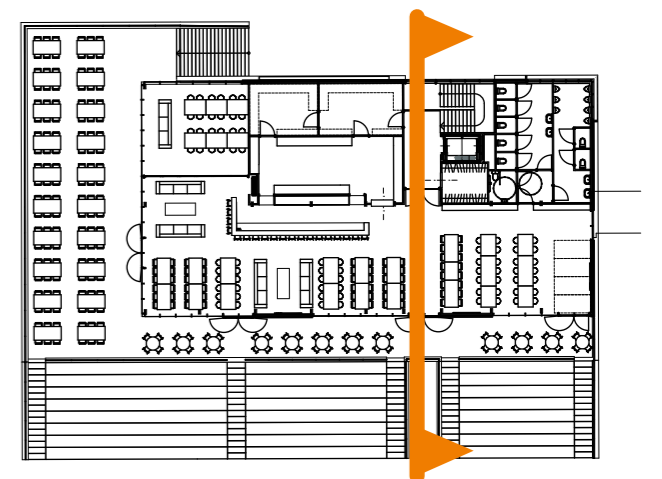
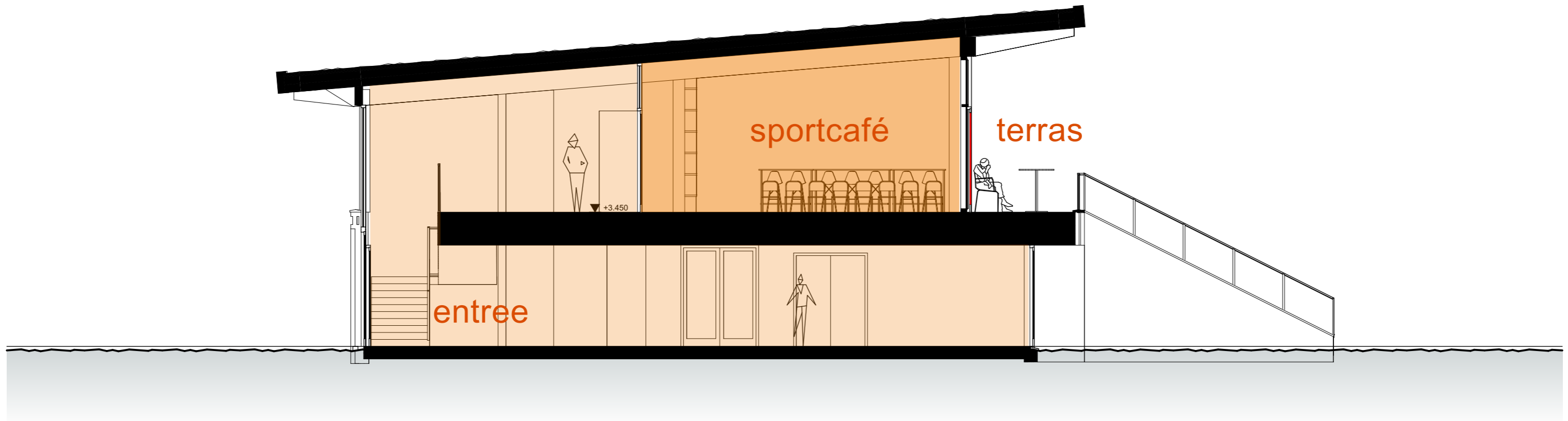
Sportcafé

N 1:100



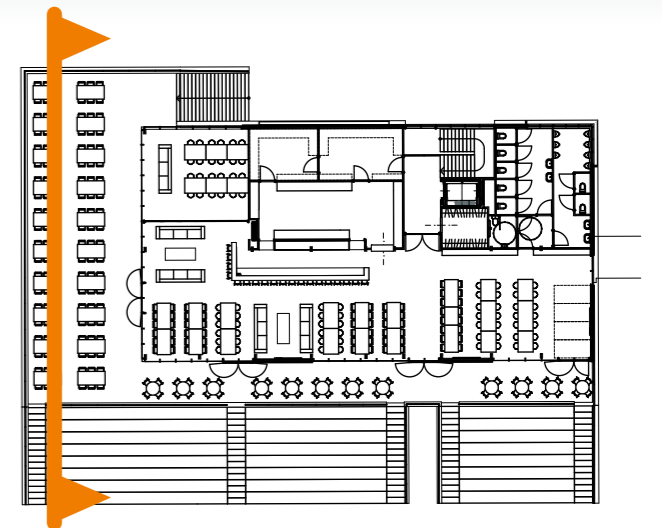
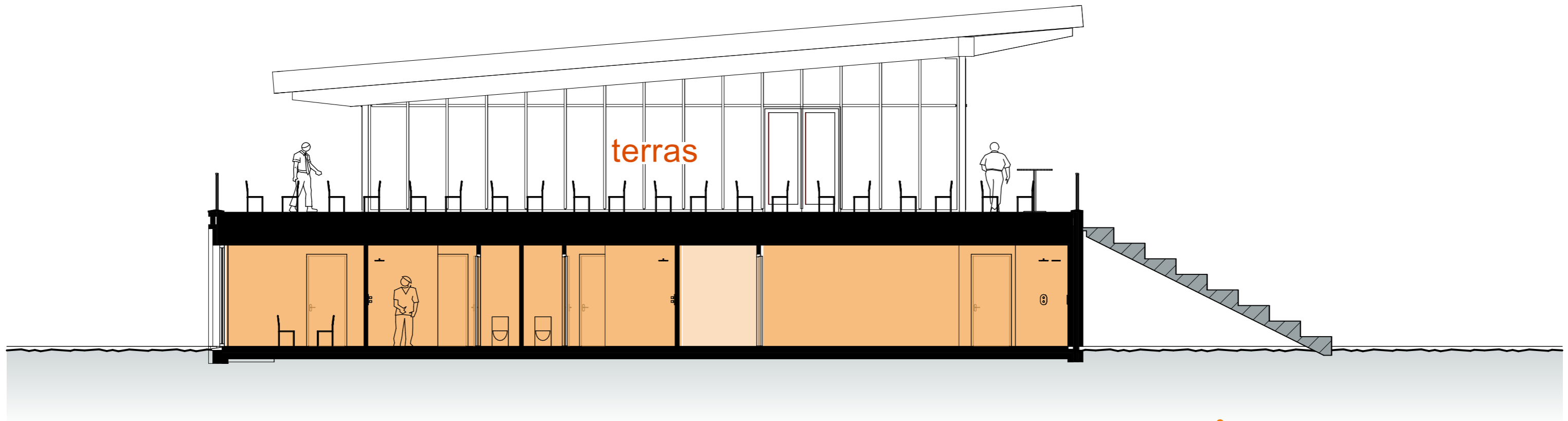
Doorsnede A-A

1:100



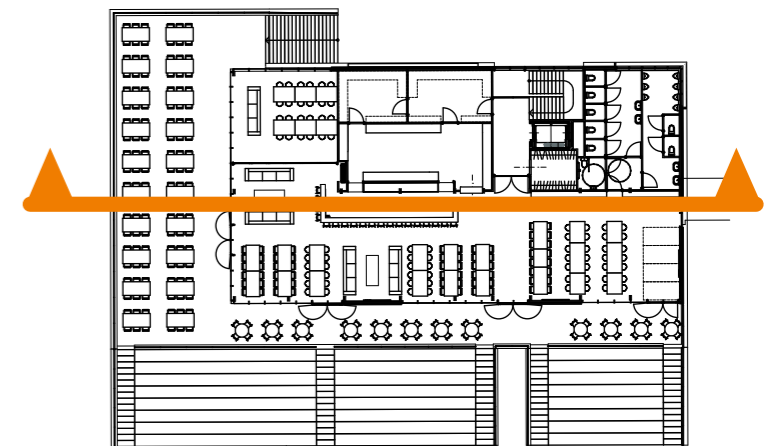
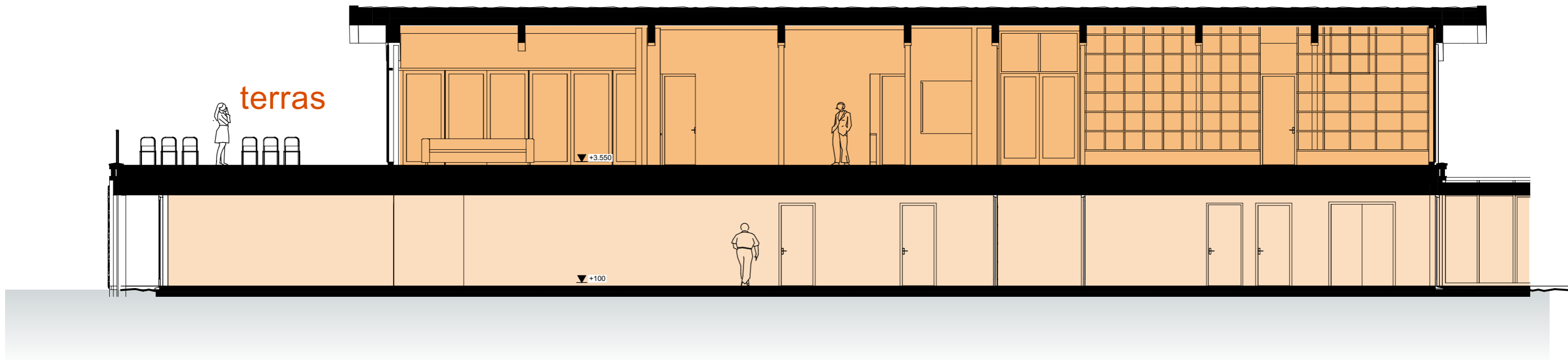
Doorsnede B-B

1:100



Doorsnede C-C

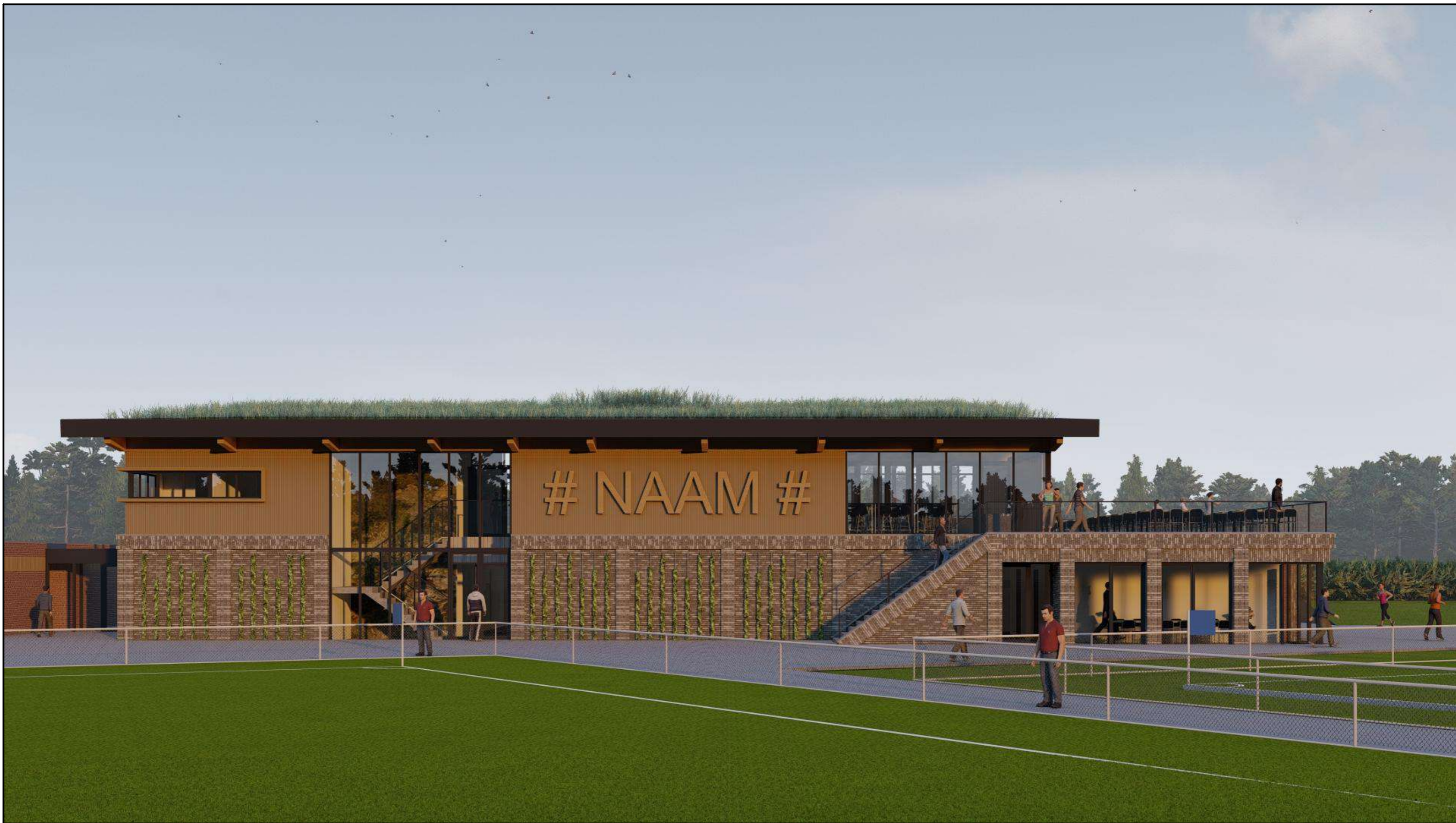
1:110



3D1 (voorgevel)



3D2 (voorgevel)



3D3 (bestuurskamer/EHBO & terras)



3D4 (toegang vanaf korfbal, handbal & volleybal)



3D5 (tribune)



3D6 (tribune)



3D7 (buitentrap)



3D8 (terras)



3D9 (Sportcafé)

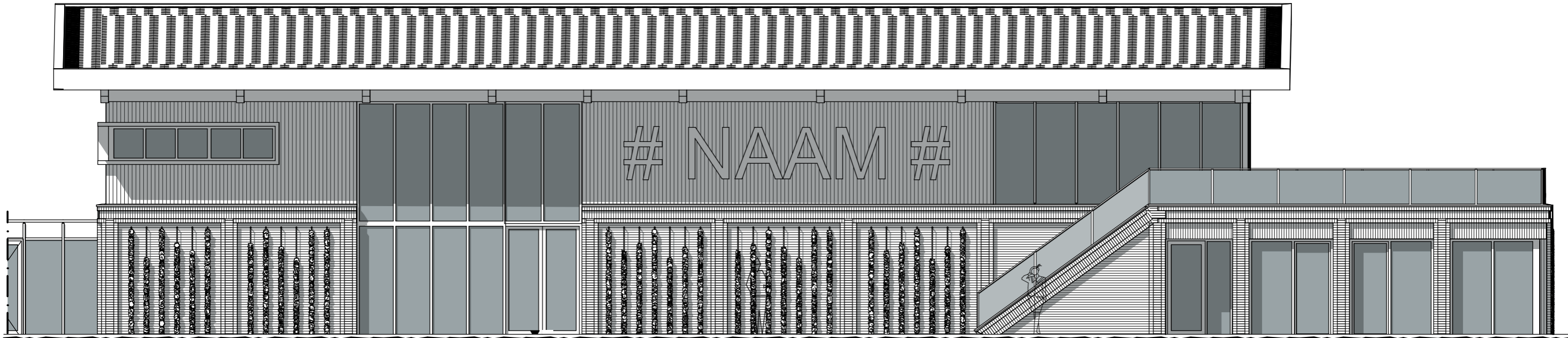


3D10 (Sportcafé)



Gevels

1:100



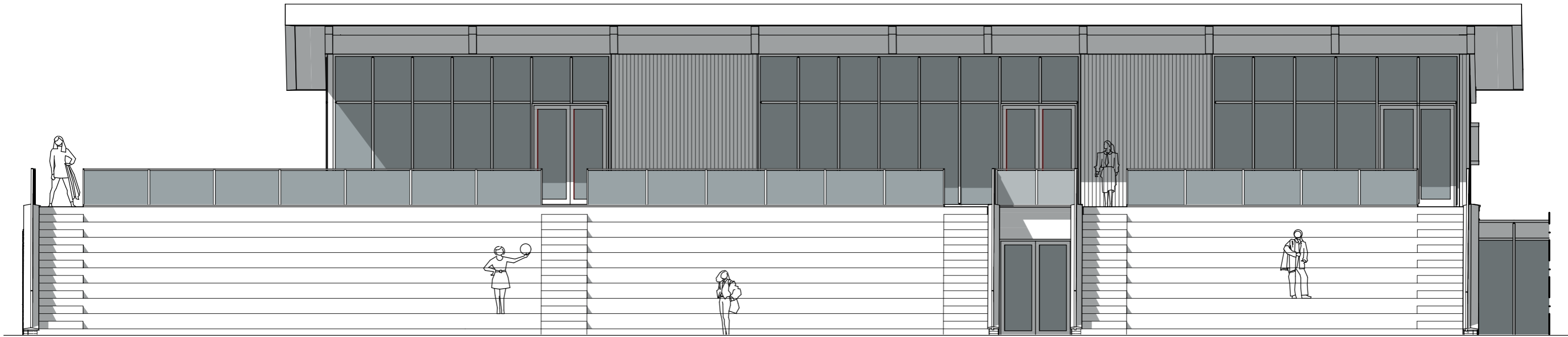
VOORGEVEL



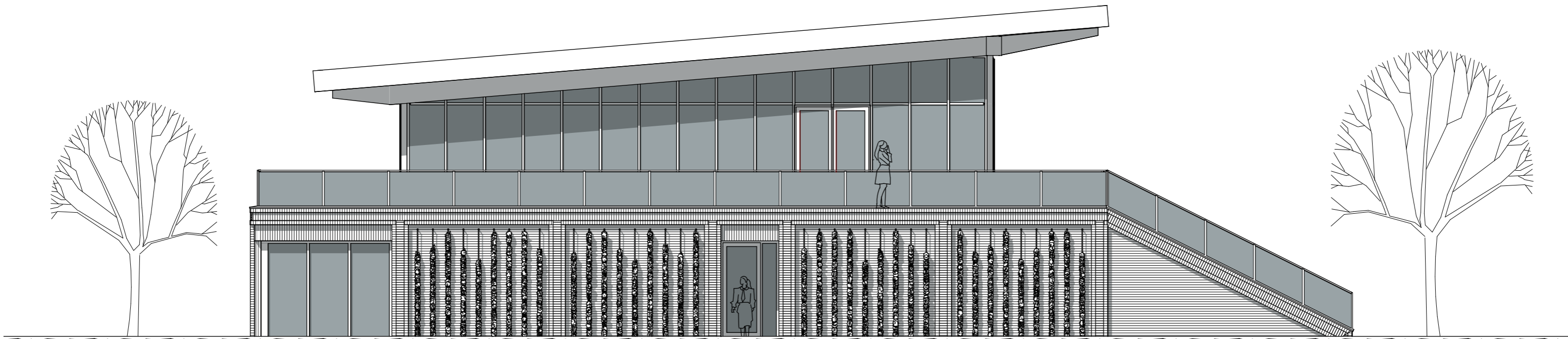
LINKER ZIJGEVEL

Gevels

1:100



ACHTERGEVEL



RECHTER ZIJGEVEL