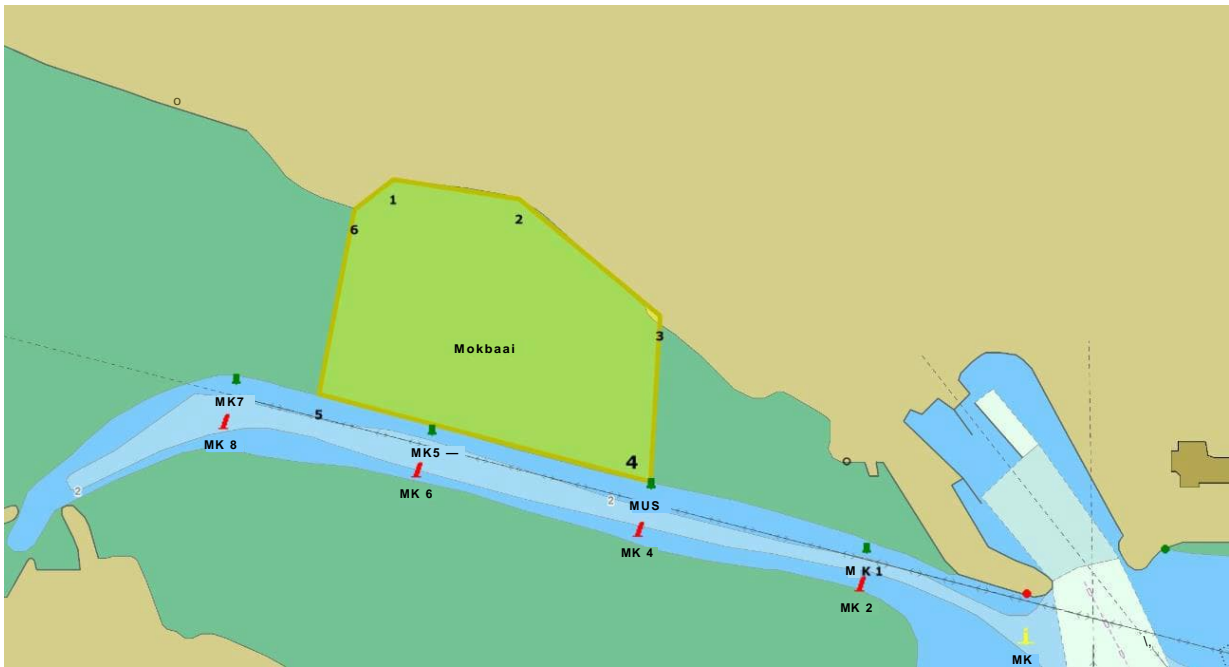


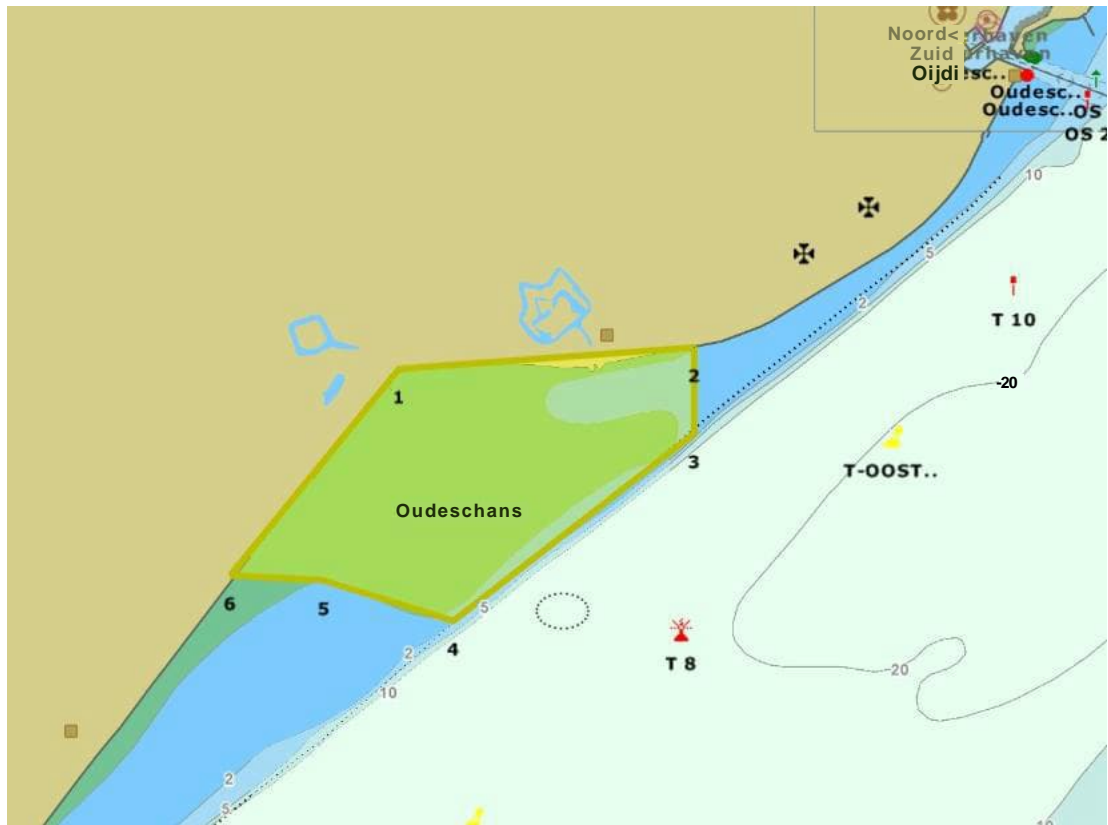
Aangewezen gebieden voor het mogen houden van natuur-educatieve tochten

1. Mokbaai



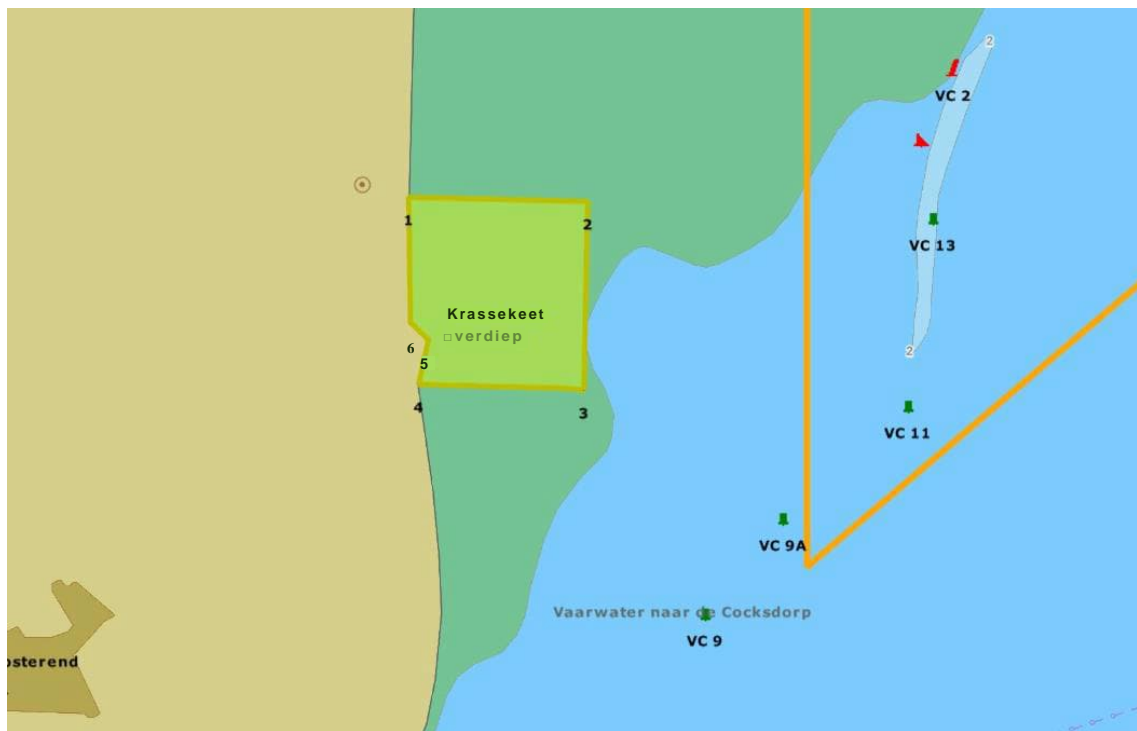
| 1. Mokbaai | | | | | | |
|------------|----|----|-----|-----|----|-----|
| | N | | | E | | |
| 1 | 53 | 00 | 373 | 004 | 46 | 215 |
| 2 | 53 | 00 | 358 | 004 | 46 | 356 |
| 3 | 53 | 00 | 273 | 004 | 46 | 523 |
| 4 | 53 | 00 | 155 | 004 | 46 | 513 |
| 5 | 53 | 00 | 218 | 004 | 46 | 120 |
| 6 | 53 | 00 | 354 | 004 | 46 | 156 |
| 7 | 53 | 00 | 352 | 004 | 46 | 166 |
| 8 | 53 | 00 | 373 | 004 | 46 | 214 |

2. Oude schans



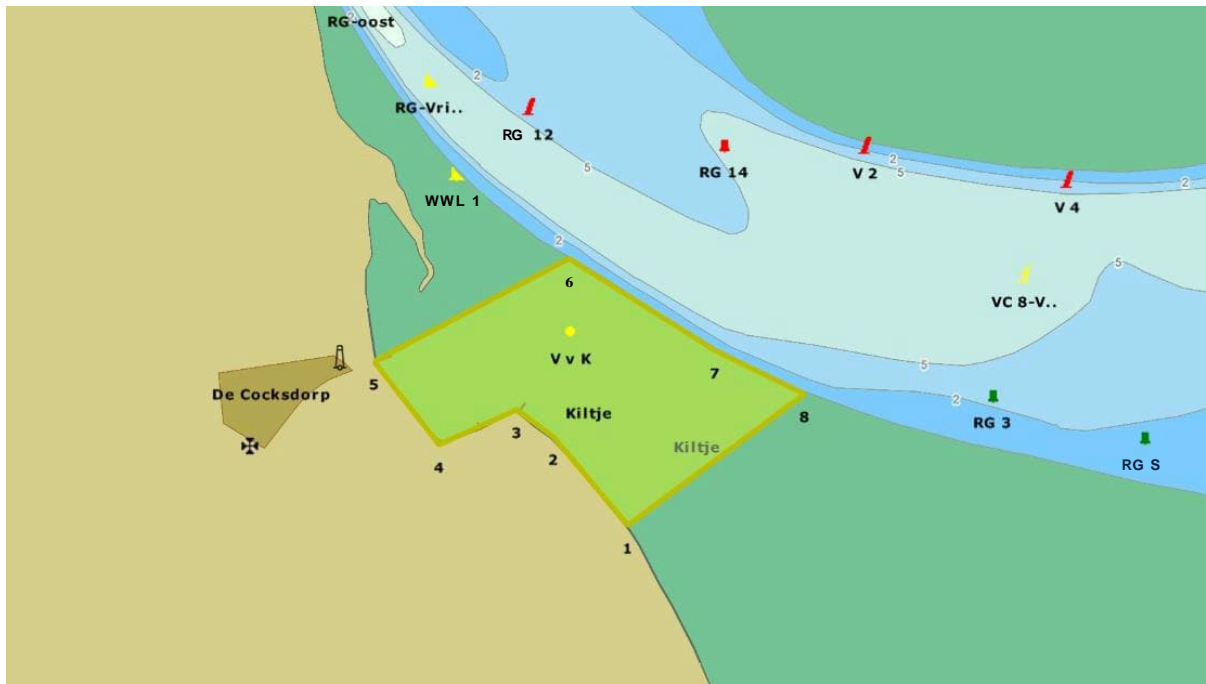
| 2. Oudeschans | | | | | | |
|---------------|----|----|-----|-----|----|-----|
| | N | | | E | | |
| 1 | 53 | 01 | 769 | 004 | 49 | 189 |
| 2 | 53 | 01 | 810 | 004 | 50 | 121 |
| 3 | 53 | 01 | 646 | 004 | 50 | 121 |
| 4 | 53 | 01 | 289 | 004 | 49 | 361 |
| 5 | 53 | 01 | 366 | 004 | 48 | 953 |
| 6 | 53 | 01 | 375 | 004 | 48 | 657 |

3. Krassekeet



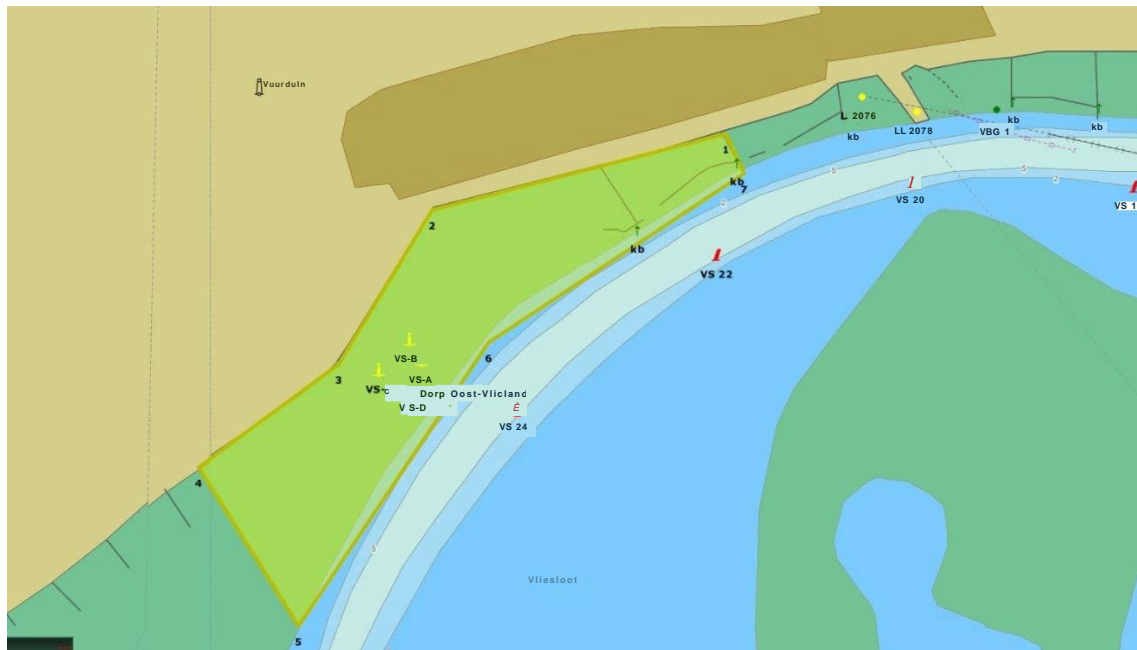
| 3. Krassekeet | | | | | | |
|---------------|----|----|-----|-----|----|-----|
| | N | | | E | | |
| 1 | 53 | 06 | 170 | 004 | 53 | 906 |
| 2 | 53 | 06 | 160 | 004 | 54 | 582 |
| 3 | 53 | 05 | 732 | 004 | 54 | 567 |
| 4 | 53 | 05 | 745 | 004 | 53 | 944 |
| 5 | 53 | 05 | 846 | 004 | 53 | 981 |
| 6 | 53 | 05 | 886 | 004 | 53 | 913 |

4. Kiltje



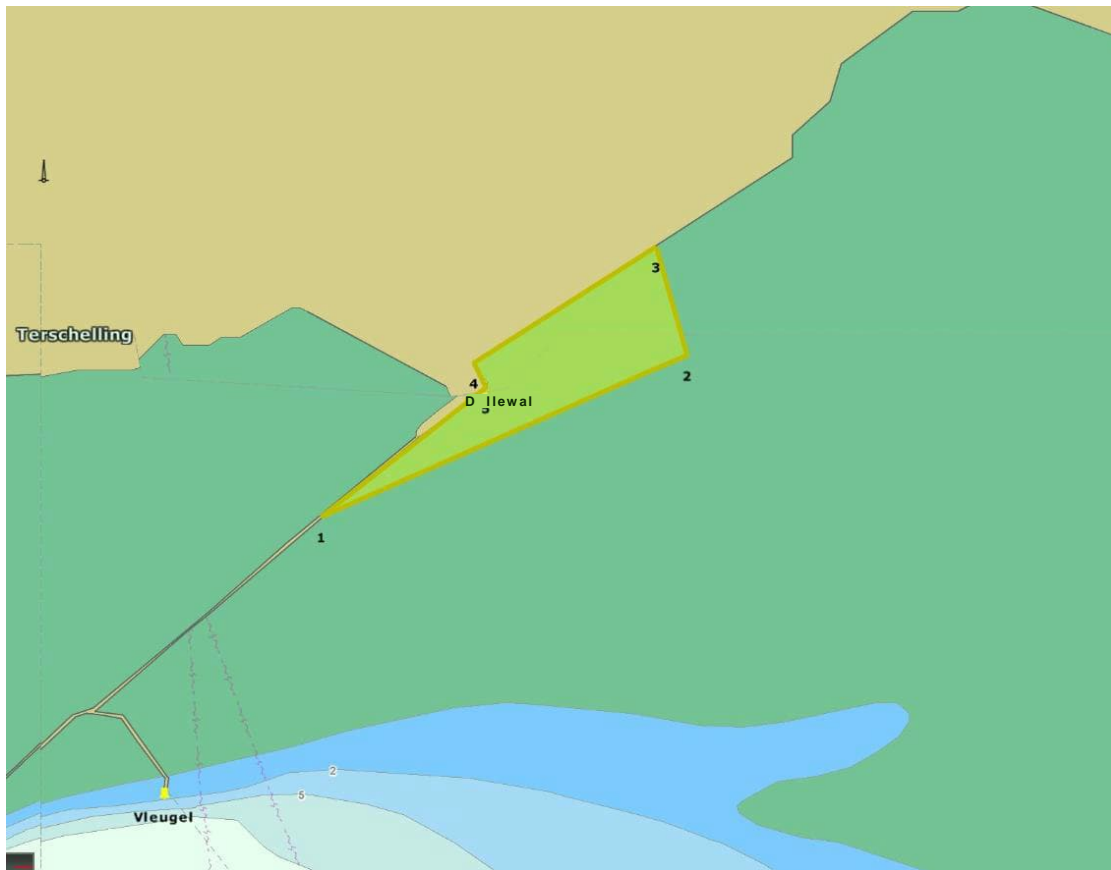
| 4. Kiltje | | | | | | |
|-----------|----|----|-----|-----|----|-----|
| | N | | | E | | |
| 1 | 53 | 09 | 104 | 004 | 53 | 586 |
| 2 | 53 | 09 | 304 | 004 | 53 | 304 |
| 3 | 53 | 09 | 369 | 004 | 53 | 167 |
| 4 | 53 | 09 | 290 | 004 | 52 | 876 |
| 5 | 53 | 09 | 477 | 004 | 52 | 632 |
| 6 | 53 | 09 | 711 | 004 | 53 | 365 |
| 7 | 53 | 09 | 504 | 004 | 53 | 912 |
| 8 | 53 | 09 | 402 | 004 | 54 | 251 |

5. Dorp Oost-Vlieland



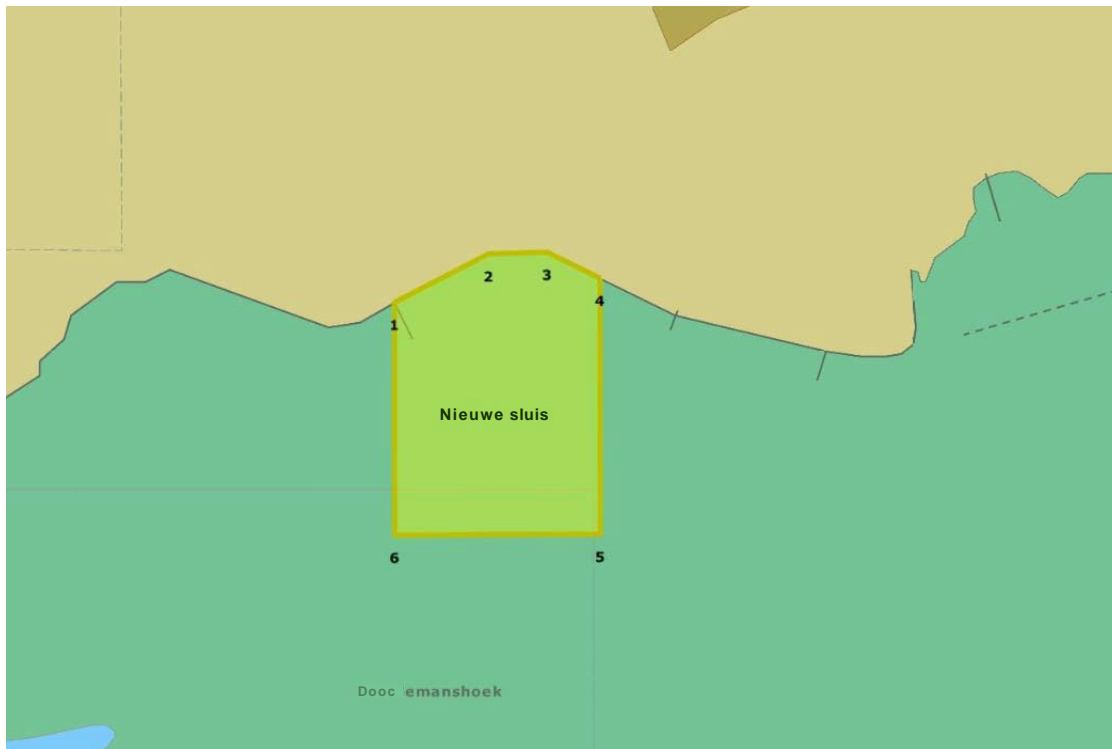
| 5. Dorp Oost-Vlieland | | | | | | |
|-----------------------|----|----|-----|-----|----|-----|
| | N | | | E | | |
| 1 | 53 | 17 | 710 | 005 | 04 | 244 |
| 2 | 53 | 17 | 636 | 005 | 03 | 766 |
| 3 | 53 | 17 | 485 | 005 | 03 | 614 |
| 4 | 53 | 17 | 385 | 005 | 03 | 386 |
| 5 | 53 | 17 | 230 | 005 | 03 | 230 |
| 6 | 53 | 17 | 507 | 005 | 03 | 858 |
| 7 | 53 | 17 | 671 | 005 | 04 | 273 |

6. Dellewal



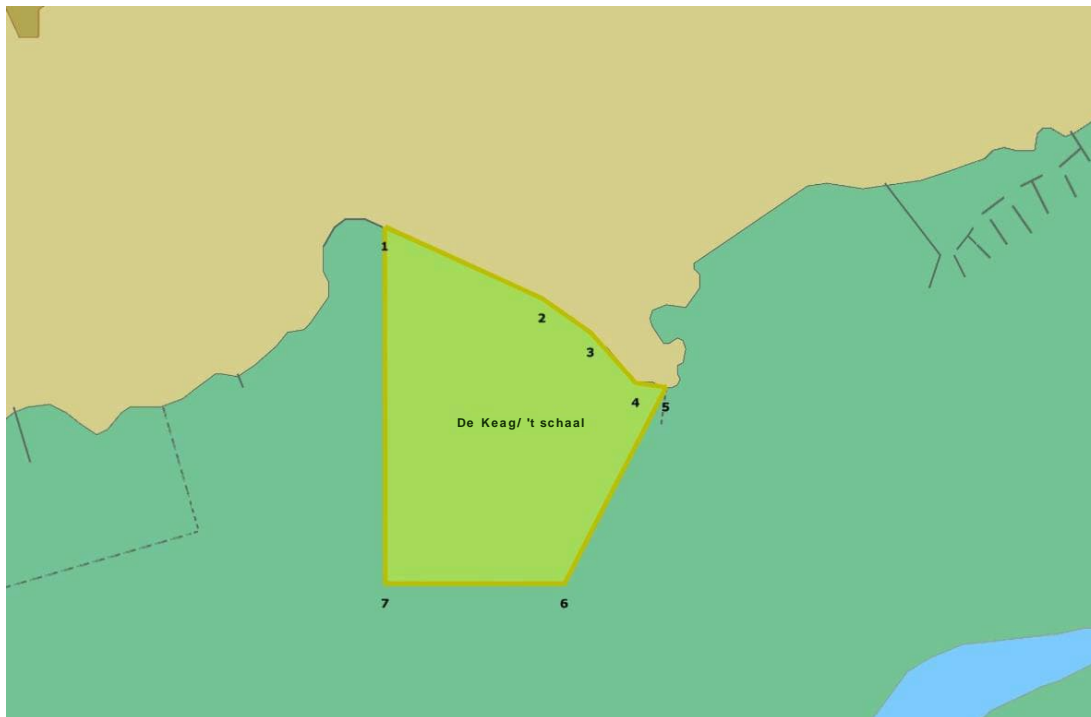
| 6. Dellewal | | | | | | |
|-------------|----|----|-----|-----|----|-----|
| | N | | | E | | |
| 1 | 53 | 21 | 794 | 005 | 14 | 320 |
| 2 | 53 | 21 | 973 | 005 | 14 | 998 |
| 3 | 53 | 22 | 094 | 005 | 14 | 941 |
| 4 | 53 | 21 | 965 | 005 | 14 | 603 |
| 5 | 53 | 21 | 939 | 005 | 14 | 625 |

7. Nieuwe Sluis



| 7. Nieuwe Sluis | | | | | | |
|-----------------|----|----|-----|-----|----|-----|
| | N | | | E | | |
| 1 | 53 | 22 | 320 | 005 | 16 | 222 |
| 2 | 53 | 22 | 403 | 005 | 16 | 494 |
| 3 | 53 | 22 | 406 | 005 | 16 | 664 |
| 4 | 53 | 22 | 361 | 005 | 16 | 817 |
| 5 | 53 | 21 | 918 | 005 | 16 | 818 |
| 6 | 53 | 21 | 916 | 005 | 16 | 223 |

8. De Keag/'t Schaal



| 8. De Keag/'t Schaal | | | | | | |
|----------------------|----|----|-----|-----|----|-----|
| | N | | | E | | |
| 1 | 53 | 22 | 815 | 005 | 18 | 870 |
| 2 | 53 | 22 | 707 | 005 | 19 | 266 |
| 3 | 53 | 22 | 655 | 005 | 19 | 389 |
| 4 | 53 | 22 | 579 | 005 | 19 | 503 |
| 5 | 53 | 22 | 573 | 005 | 19 | 579 |
| 6 | 53 | 22 | 276 | 005 | 19 | 323 |
| 7 | 53 | 22 | 276 | 005 | 18 | 871 |

9. Feugelpôle

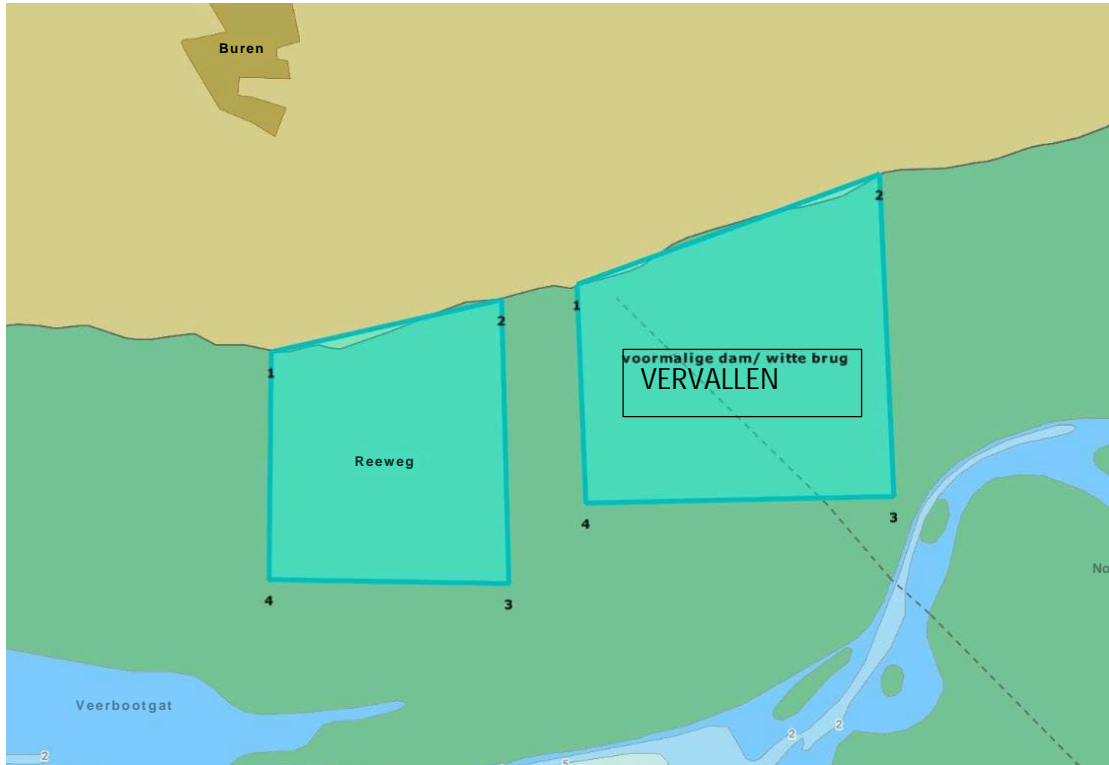


| 9. Feugelpôle | | | | | | | |
|---------------|----|----|-----|--|-----|----|-----|
| | N | | | | E | | |
| 1 | 53 | 25 | 565 | | 005 | 39 | 370 |
| 2 | 53 | 25 | 526 | | 005 | 39 | 829 |
| 3 | 53 | 25 | 487 | | 005 | 40 | 701 |
| 4 | 53 | 25 | 679 | | 005 | 41 | 533 |
| 5 | 53 | 24 | 973 | | 005 | 41 | 533 |
| 6 | 53 | 24 | 973 | | 005 | 39 | 829 |
| 7 | 53 | 25 | 251 | | 005 | 39 | 351 |

| Hessing | | | | | | | |
|---------|----|----|-----|--|-----|----|-----|
| | N | | | | E | | |
| 8 | 53 | 24 | 972 | | 005 | 40 | 966 |
| 9 | 53 | 24 | 968 | | 005 | 41 | 190 |
| 10 | 53 | 24 | 562 | | 005 | 41 | 194 |
| 11 | 53 | 24 | 517 | | 005 | 40 | 952 |

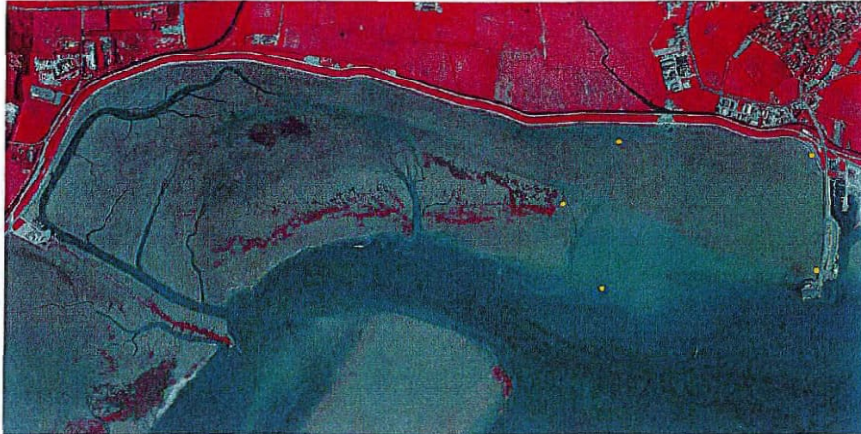
NB:
 De Feugelpôle is o.g.v. art. 2.45 Omgevingswet aangewezen als gesloten gebied.
 Het broedseizoen loopt van 15 maart-15 augustus. Voor het houden van natuur-educatieve tochten zijn afspraken gemaakt ten aanzien van de oostelijke begrenzing. Staatsbosbeheer zal elk jaar in overleg met de vergunninghouders de borden in opdracht van het Ministerie van LNVN plaatsen/weghalen.

10. Reeweg

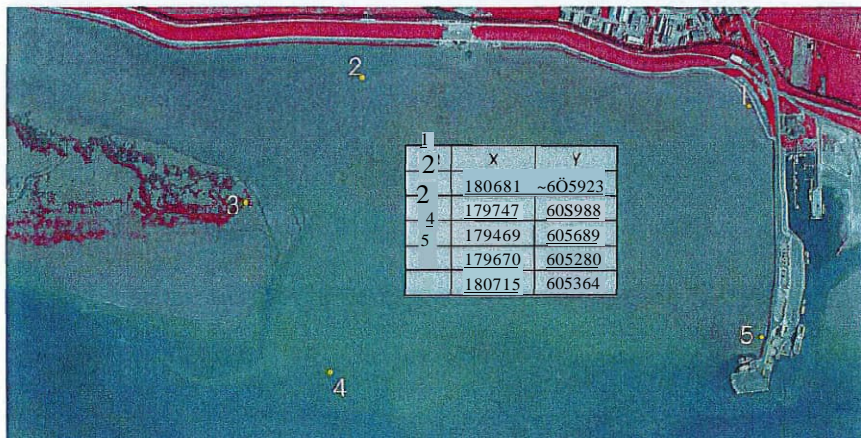


| 10. Reeweg | | | | | | |
|------------|----|----|-----|-----|----|-----|
| | N | | | E | | |
| 1 | 53 | 26 | 239 | 005 | 48 | 048 |
| 2 | 53 | 26 | 344 | 005 | 48 | 823 |
| 3 | 53 | 25 | 774 | 005 | 48 | 847 |
| 4 | 53 | 25 | 781 | 005 | 48 | 040 |

11. Veerdam Nes/Ameland



Figuur 3. Wadgebied tussen de veerdam bij Nes (rechts) en het gebied Ballumerbocht (links). De afstand hiertussen bedraagt 3.8 km. Met de 5 gele stippen is het beoogde excursiegebied Nes-West aangegeven (zie voor details figuur 4). Links van de linker gele stip begint een gebied met oesterrijfen en geulen en platen met veel slik wat niet geschikt is om te belopen en wat doorloopt tot de Ballumerbocht links op de afbeelding.



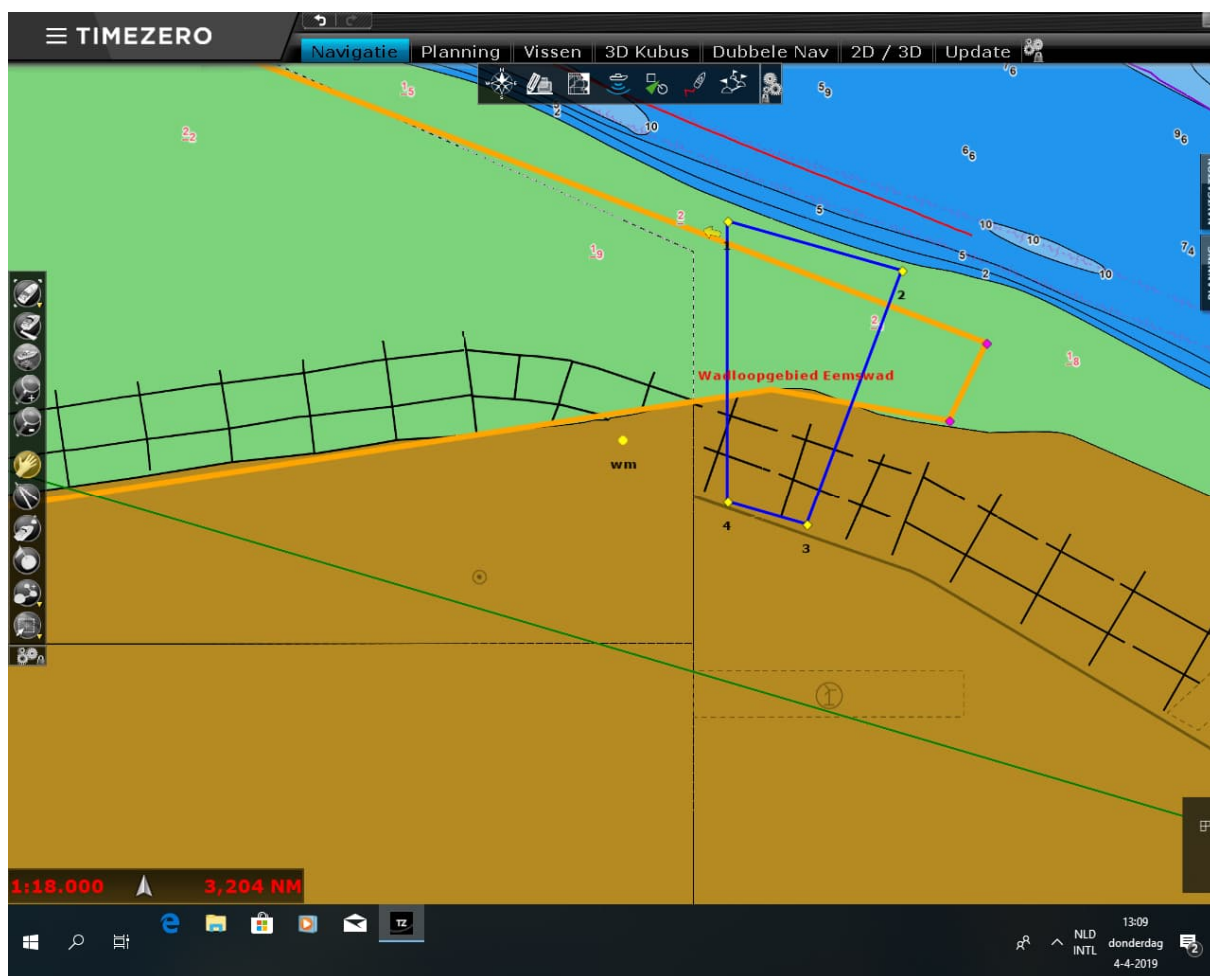
Figuur 4. Detail uit figuur 3. De gele stippen zijn nu genummerd. 1=startpunt/eindpunt. 2, 4 en 5=boei kitesurfen. 3=oester rif De kortste afstand tussen het startpunt (1) en het oester rif (3) is 1230 meter. In de tabel staan de RD-coördinaten van de 5 genummerde stippen.

12. Jachthaven Schiermonnikoog



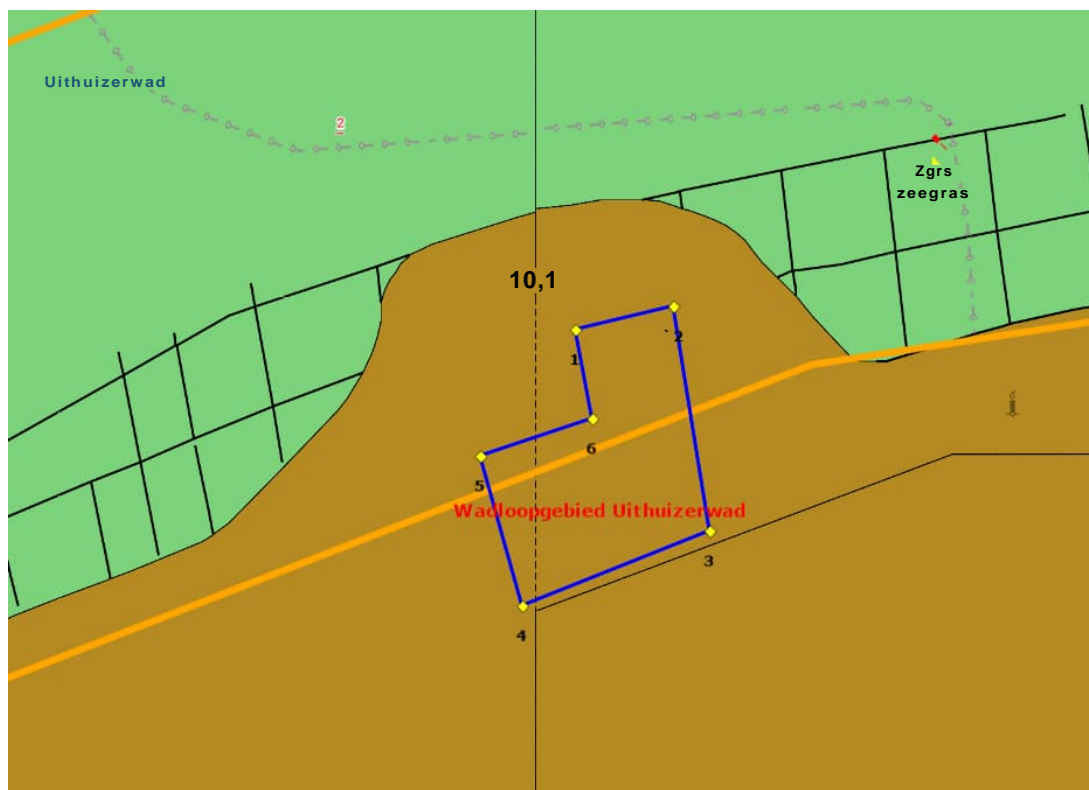
| 12. Jachthaven Schiermonnikoog | | | | | | |
|--------------------------------|----|----|-----|-----|----|-----|
| | N | | | E | | |
| 1 | 53 | 28 | 297 | 006 | 10 | 057 |
| 2 | 53 | 28 | 348 | 006 | 10 | 144 |
| 3 | 53 | 28 | 336 | 006 | 10 | 945 |
| 4 | 53 | 27 | 867 | 006 | 10 | 930 |
| 5 | 53 | 27 | 865 | 006 | 10 | 272 |
| 6 | 53 | 28 | 077 | 006 | 10 | 066 |

13. Emmapolder



| 13. Emmapolder/Eemswad | | | | | | |
|------------------------|----|----|-----|-----|----|-----|
| | N | | | E | | |
| 1 | 53 | 28 | 530 | 006 | 45 | 900 |
| 2 | 53 | 28 | 400 | 006 | 46 | 670 |
| 3 | 53 | 27 | 730 | 006 | 46 | 250 |
| 4 | 53 | 27 | 790 | 006 | 45 | 900 |

14. Lauwerpolder



| 14. Lauwerpolder/Uithuizerwad | | | | | | |
|-------------------------------|----|----|-----|-----|----|-----|
| | N | | | E | | |
| 1 | 53 | 27 | 680 | 006 | 39 | 990 |
| 2 | 53 | 27 | 730 | 006 | 40 | 340 |
| 3 | 53 | 27 | 250 | 006 | 40 | 470 |
| 4 | 53 | 27 | 090 | 006 | 39 | 800 |
| 5 | 53 | 27 | 410 | 006 | 39 | 650 |
| 6 | 53 | 27 | 490 | 006 | 40 | 050 |

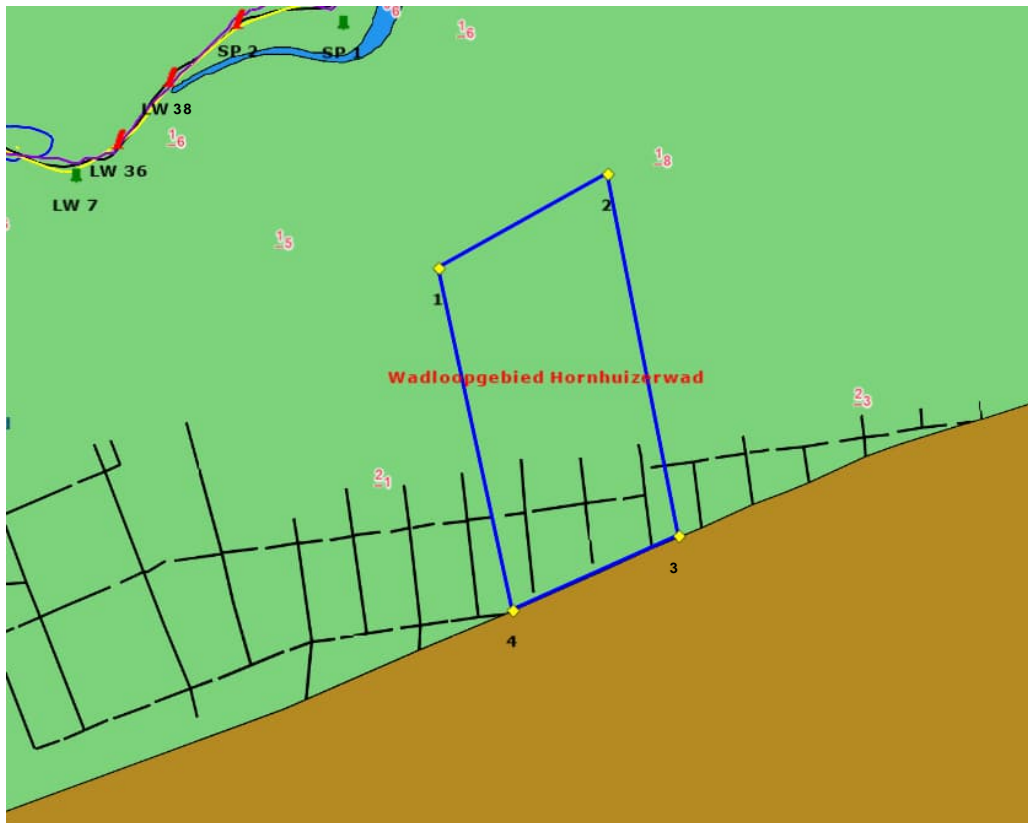
15. Noordpolderzijk



15. Noordpolderzijk coördinaten

| | | |
|---|------------|------------|
| 1 | 53.27.1600 | 06.33.5100 |
| 2 | 53.27.3200 | 06.34.2600 |
| 3 | 53.26.2600 | 06.34.7900 |
| 4 | 53.26.1200 | 06.33.9600 |

16. Negenboerenpolder



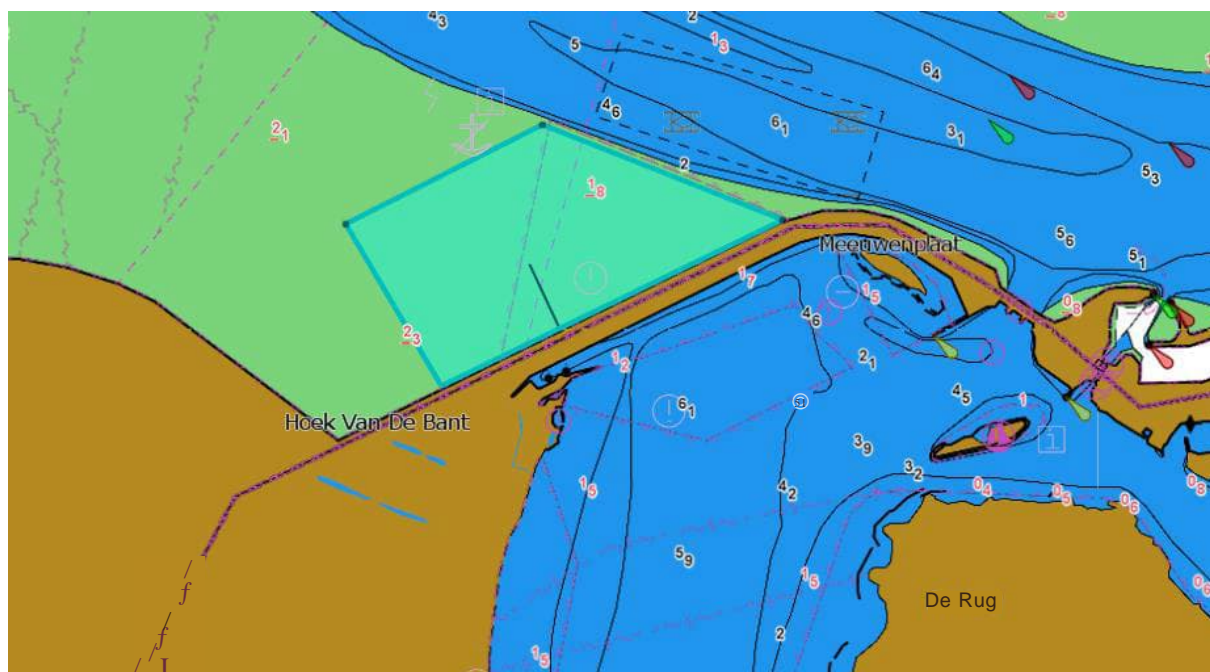
| 16. Negenboerenpolder/Hornhuizerwad | | | | | | |
|-------------------------------------|----|----|-----|--|-----|--------|
| | N | | | | E | |
| 1 | 53 | 26 | 130 | | 006 | 24 450 |
| 2 | 53 | 26 | 320 | | 006 | 25 020 |
| 3 | 53 | 25 | 590 | | 006 | 25 260 |
| 4 | 53 | 25 | 440 | | 006 | 24 700 |

17. Haven Lauwersoog



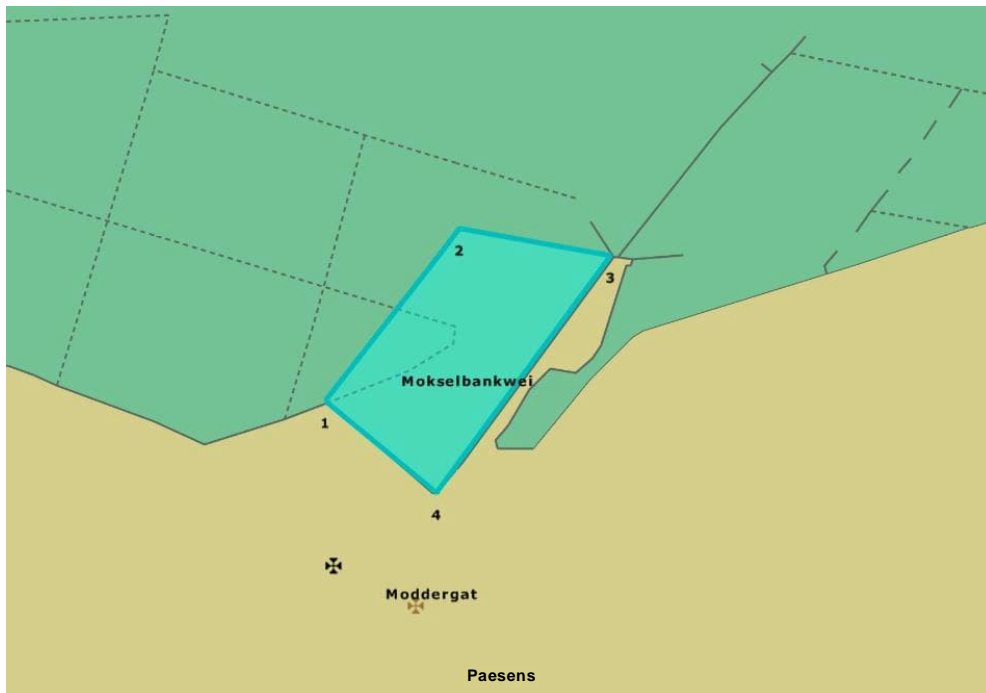
| 17. Haven Lauwersoog | | | | | | |
|----------------------|----|----|-----|-----|----|-----|
| | N | | | E | | |
| 1 | 53 | 24 | 555 | 006 | 12 | 881 |
| 2 | 53 | 25 | 692 | 006 | 12 | 801 |
| 3 | 53 | 24 | 608 | 006 | 13 | 182 |

18. Hoek van de Bant



| | | | | | | | |
|-----|------------------|----|-----|----|----|----|-----|
| 18. | Hoek van de Bant | | | | | | |
| NB | 53 | 25 | 084 | EI | 06 | 09 | 580 |
| NB | 53 | 24 | 849 | EL | 06 | 08 | 800 |
| NB | 53 | 24 | 859 | EI | 06 | 10 | 533 |
| NB | 53 | 24 | 472 | EI | 06 | 09 | 175 |

19. Mokselbankwei



| 19. Mokselbankwei | | | | | | |
|-------------------|----|----|-----|-----|----|-----|
| | N | | | E | | |
| 1 | 53 | 24 | 383 | 006 | 04 | 897 |
| 2 | 53 | 24 | 610 | 006 | 05 | 192 |
| 3 | 53 | 24 | 574 | 006 | 05 | 526 |
| 4 | 53 | 24 | 262 | 006 | 05 | 142 |

20. Pier veerdienst



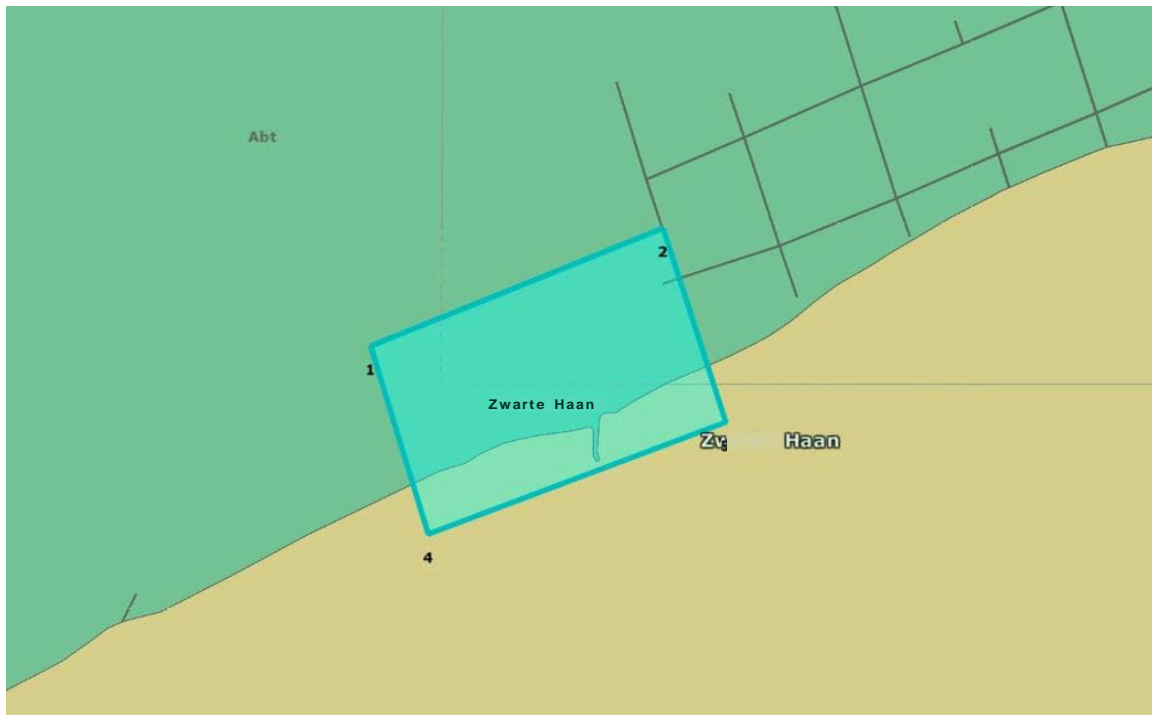
| 20. Pier veerdienst | | | | | | |
|---------------------|----|----|-----|-----|----|-----|
| | N | | | E | | |
| 1 | 53 | 23 | 704 | 005 | 52 | 898 |
| 2 | 53 | 23 | 953 | 005 | 53 | 292 |
| 3 | 53 | 24 | 166 | 005 | 55 | 040 |
| 4 | 53 | 23 | 836 | 005 | 55 | 232 |
| 5 | 53 | 23 | 591 | 005 | 53 | 842 |
| 6 | 53 | 23 | 713 | 005 | 53 | 771 |
| 7 | 53 | 23 | 526 | 005 | 53 | 081 |

21. Friese Wad/De Rijd



| 21. Friese wad/De Rijd | | | | | | |
|------------------------|----|----|-----|-----|----|-----|
| | N | | | E | | |
| 1 | 53 | 20 | 480 | 005 | 43 | 269 |
| 2 | 53 | 20 | 747 | 005 | 44 | 092 |
| 3 | 53 | 20 | 142 | 005 | 44 | 609 |
| 4 | 53 | 19 | 907 | 005 | 43 | 758 |

22. Zwarte haan



| 22. Zwarte Haan | | | | | | |
|-----------------|----|----|-----|-----|----|-----|
| | N | | | E | | |
| 1 | 53 | 18 | 827 | 005 | 36 | 762 |
| 2 | 53 | 19 | 068 | 005 | 37 | 762 |
| 3 | 53 | 18 | 671 | 005 | 37 | 977 |
| 4 | 53 | 18 | 442 | 005 | 36 | 959 |

23. Wierbalg



| 23. Wierbalg | | | | | | |
|--------------|----|----|-----|-----|----|-----|
| | N | | | E | | |
| 1 | 52 | 56 | 861 | 005 | 00 | 070 |
| 2 | 52 | 56 | 842 | 005 | 00 | 594 |
| 3 | 52 | 56 | 062 | 005 | 00 | 588 |
| 4 | 52 | 56 | 138 | 005 | 00 | 319 |
| 5 | 52 | 56 | 143 | 005 | 00 | 219 |
| 6 | 52 | 56 | 115 | 005 | 00 | 070 |

24. Breehorn



| 24. Breehorn | | | | | | |
|--------------|----|----|-----|-----|----|-----|
| | N | | | E | | |
| 1 | 52 | 56 | 726 | 004 | 57 | 143 |
| 2 | 52 | 56 | 770 | 004 | 57 | 630 |
| 3 | 52 | 56 | 805 | 004 | 57 | 808 |
| 4 | 52 | 55 | 868 | 004 | 58 | 357 |
| 5 | 52 | 55 | 764 | 004 | 57 | 979 |

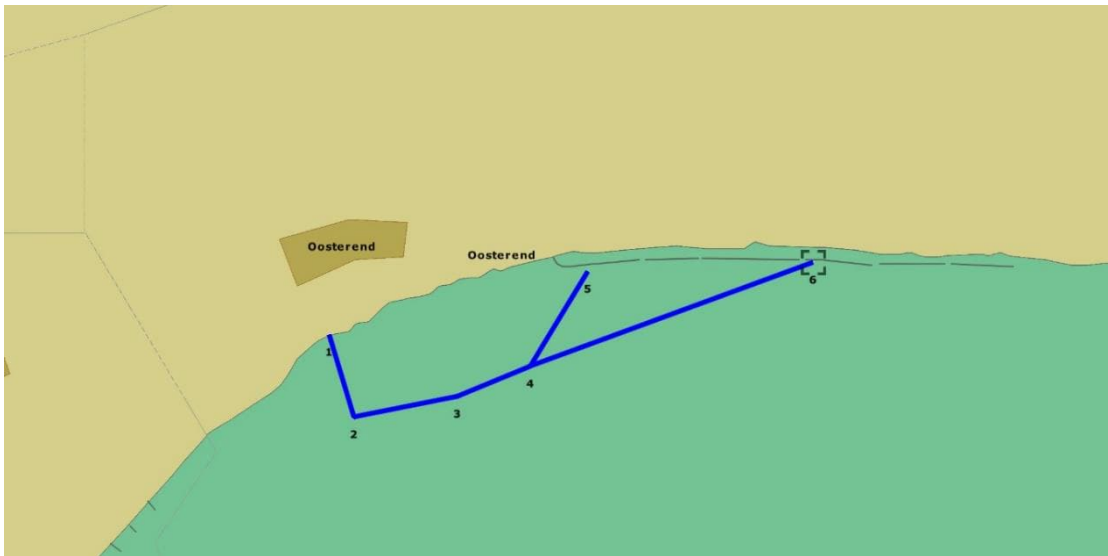
25. Het Kuitje



| 25. Het Kuitje | | | | | | |
|----------------|----|----|-----|-----|----|-----|
| | N | | | E | | |
| 1 | 52 | 56 | 146 | 004 | 47 | 590 |
| 2 | 52 | 55 | 926 | 004 | 47 | 729 |
| 3 | 52 | 55 | 790 | 004 | 47 | 979 |
| 4 | 52 | 55 | 695 | 004 | 47 | 729 |
| 5 | 52 | 55 | 751 | 004 | 47 | 667 |
| 6 | 52 | 55 | 957 | 004 | 47 | 656 |
| 7 | 52 | 55 | 979 | 004 | 47 | 603 |

26. Oosterend

Ontheffingsroute ipv gebied. Ivm aanwezigheid van klein zee gras tussen de route en de vaste wal.



| 26. Oosterend | | | | | | |
|---------------|----|----|-----|-----|----|-----|
| | N | | | E | | |
| 1 | 53 | 24 | 011 | 005 | 22 | 692 |
| 2 | 53 | 23 | 762 | 055 | 22 | 818 |
| 3 | 53 | 23 | 825 | 005 | 23 | 340 |
| 4 | 53 | 23 | 915 | 005 | 23 | 710 |
| 5 | 53 | 24 | 202 | 005 | 24 | 002 |
| 6 | 53 | 24 | 229 | 005 | 25 | 146 |