

Information document Masa plant

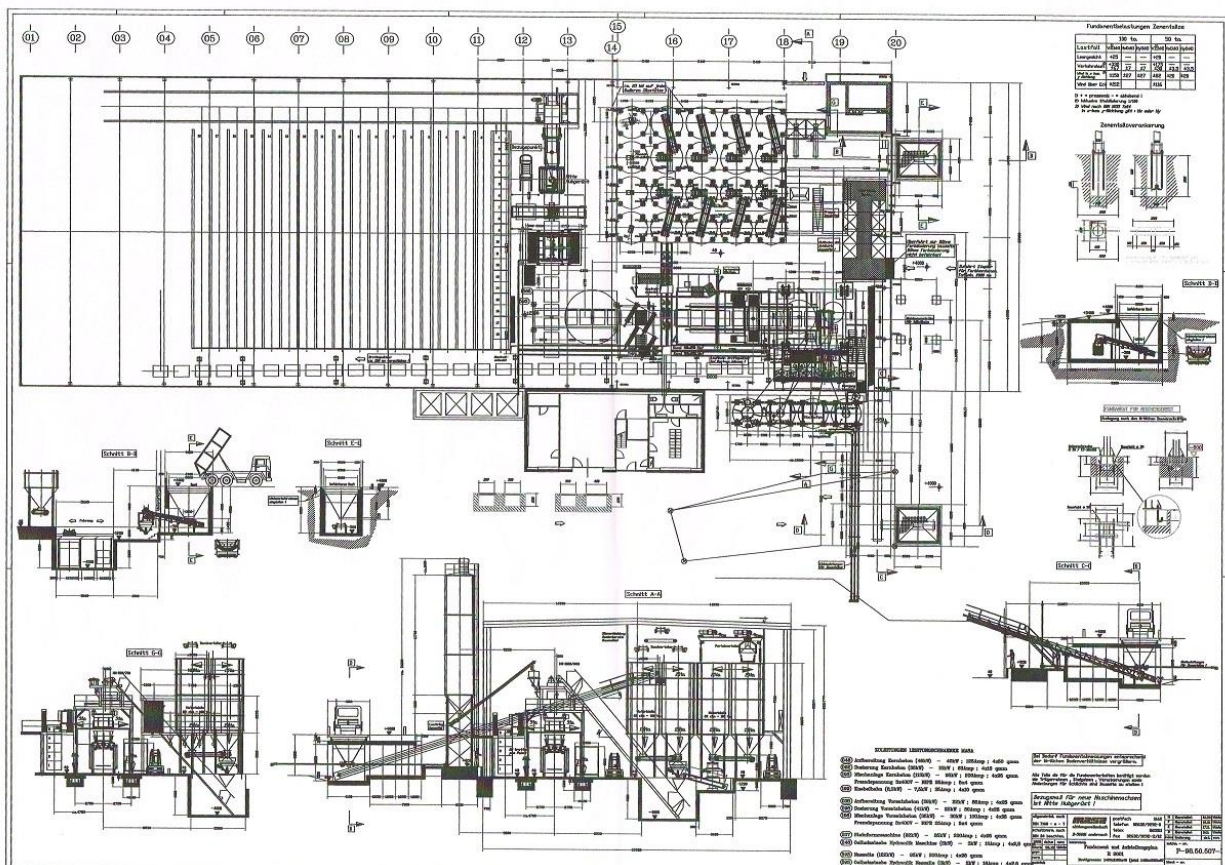
Machine type	Masa Record 9001 VB
Year of built	1999
Controls	Blockmachine and fingercar : S7 Packingline : Rekers plc Rest of the wet & dry line : S5
Boardsize	1.450x1.100x40 mm
Number of boards	±5.000 pcs
Vibrationsystem	Masa-system with frequencycontroller. No servomotors.
Max product height	14 cm pavers without having to adjust the elevator/lowerator buffers and fingercar. Curbstones up to 1 meter long and 30 cm high can be held between the fingers without adjustment. Longer products higher than 14 cm require adjustment of the fingers (manual, not hydraulic).
Board brand	Peri, good condition
Board buffer	1.800 boards. 28 boards per stack
Curing chamber	Rotho. Freestanding
Height curing chamber	20 stories
Storyheight	35 cm
Number of chambers	18
Positions per chamber	18
Total positions	6.480
Mixing plant	Masa controls
Face mix mixer	Masa HM500/750
Main mix mixer	Masa HM2000/3000
Pigment dosing	Finke granulate. 6 colors
Additive dosing	2 types
Aggregate silo's	20 silo's 60m ³
Cement silo's	3 silos 90m ³ and 1 silo 40m ³ .
Cycle time pavers	14,5 sec.
Output per 8 hrs	2.000 m ² of regular pavers 10,5x21x8 cm
Cuber	double cubers
Pallet system	Automatic pallet destacker
Horizontal strapping	2 Sander strappers (1997)
Product transport	automatic placement onto 4-cart system
Moulds included	Pavers 10,5x21x8, 10 and 12 cm Pavers 21x7x8 cm Tiles 30x30x4,5 cm. Also 6 cm and 8 cm thick Various types of grass concrete/Turfblock 40x60x12 cm Tiles 30x40x6 cm and 30x60x6 cm

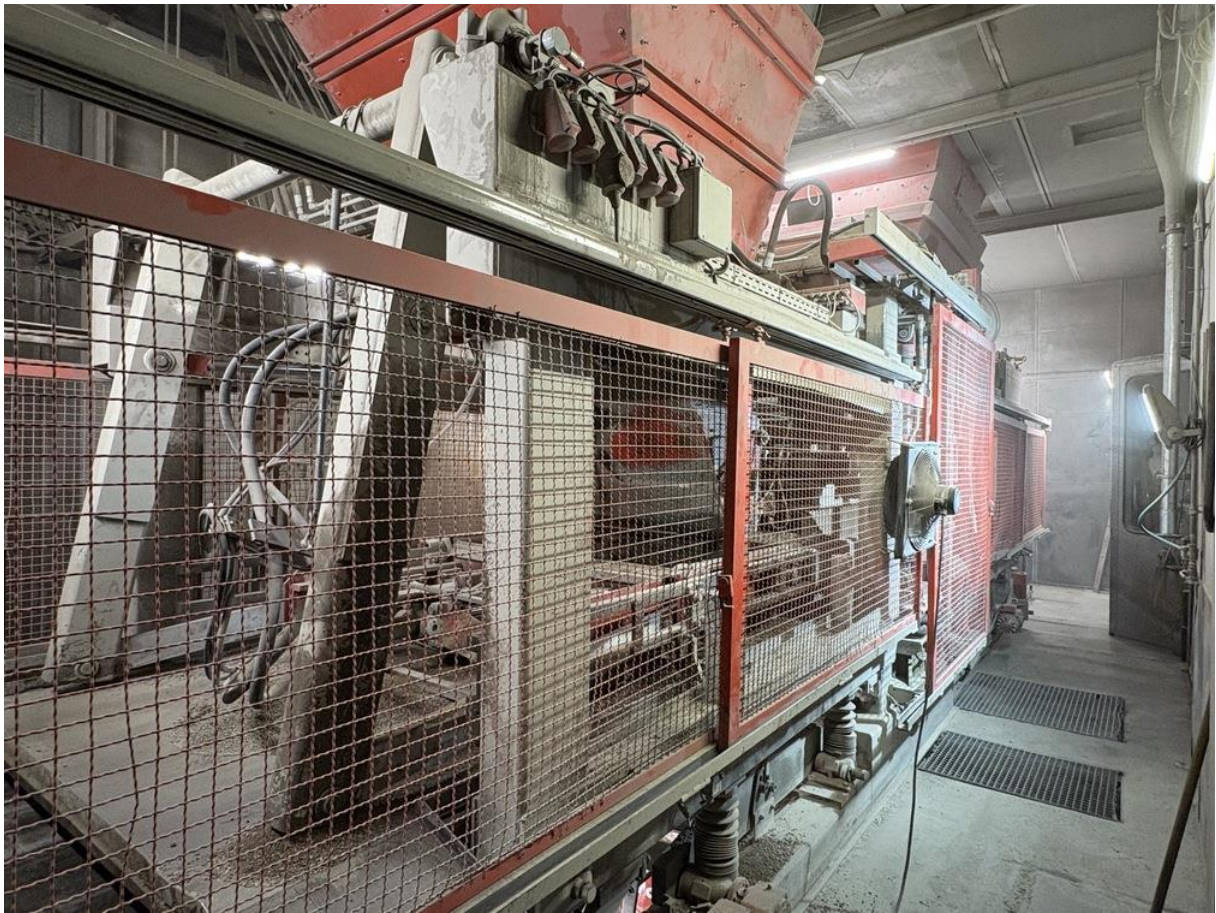
All pictures in this document are available in high resolution also.

Available videos:

- 01 Transport of sand and aggregates
- 02 Coarse and fine dosing of sand and aggregate
- 03 Dosing of sand and aggregates
- 04 Skip
- 05 Board destacker
- 06 Board handling
- 07 Transport from mixer to machine A Plant 1
- 08 Production 1
- 09 Production
- 10 Wet product handling 1
- 11 Wet product handling 2
- 12 Elevator with buffer and fingercar
- 13 Finger car placing products
- 14 Dry product handling and strapping
- 15 Board buffer crane
- 16 Handling of packs
- 17 Cart transport system

This Masa production line is a high capacity line. The packing line is capable of handling the output of two blockmachines.





Masa Record 9001 VB



Electric drawings available



3 silo's of 90m³ and 1 silo of 40 m³





Dust extraction



Transport of materials to storage silos



20 Storage silos for sand and aggregates



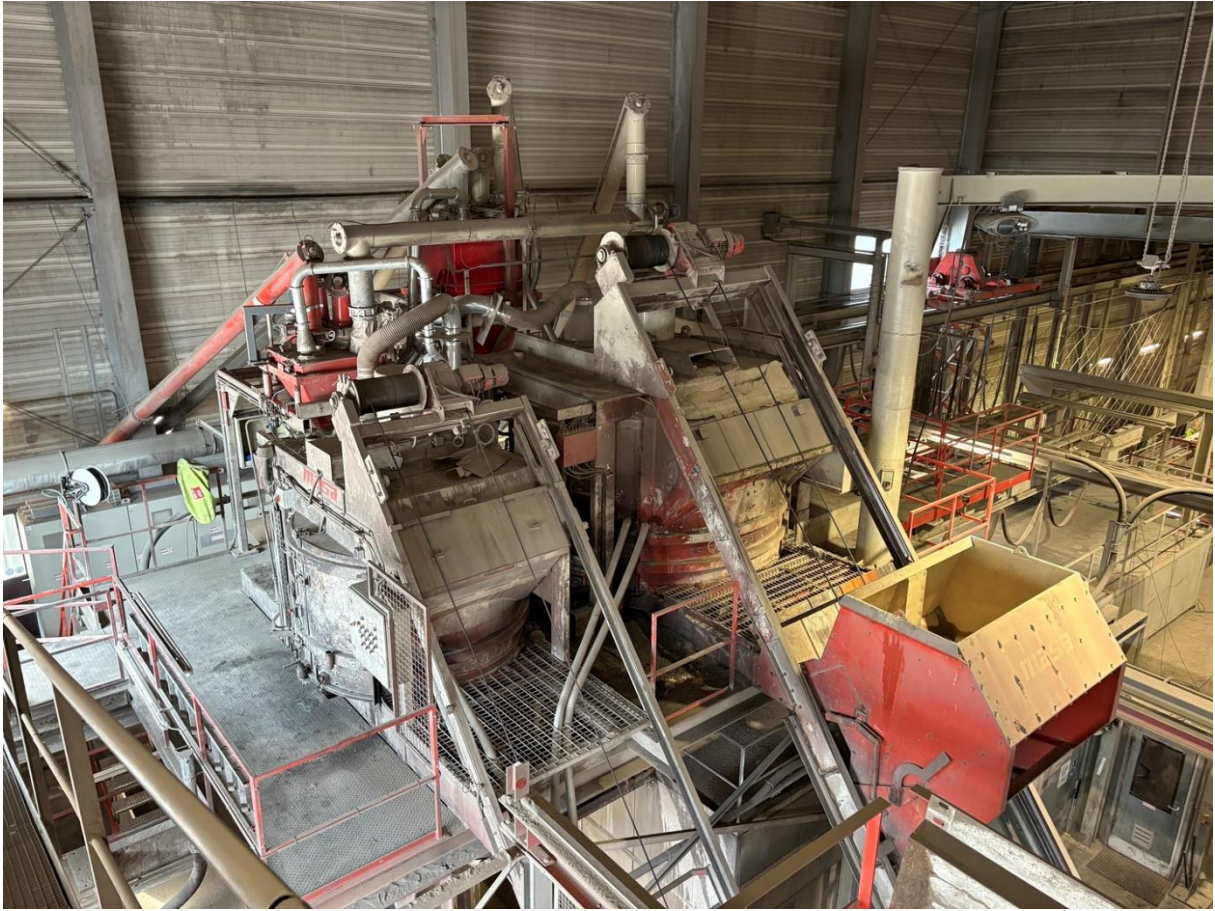
Masa HM500/750 mixer



Masa HM2000/3000 mixer







Skip with two mixers



Transport of materials to storage silos



Transport of materials to storage silos



Transport of materials to storage silos with reverseable conveyor



Top side of storage silos







Option for special materials, easy fill





Bucket conveyors for main mix and face mix



Board destacking



Stacks of boards



Finke granulate dosing system for color pigments



Weighing bucket conveyor for sand and aggregates



Finke dosing system for color pigments



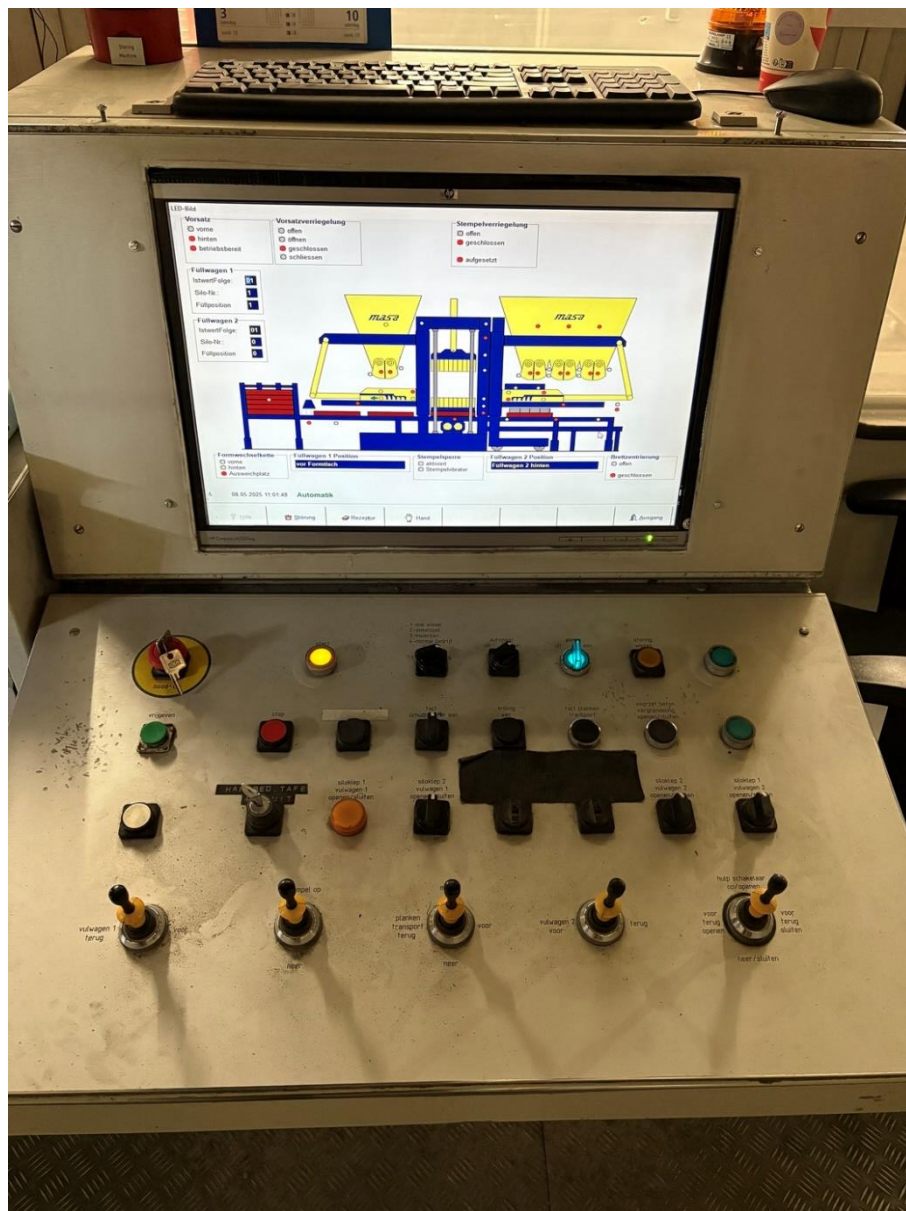
Board destacker



Big bags for colorpigment dosing system





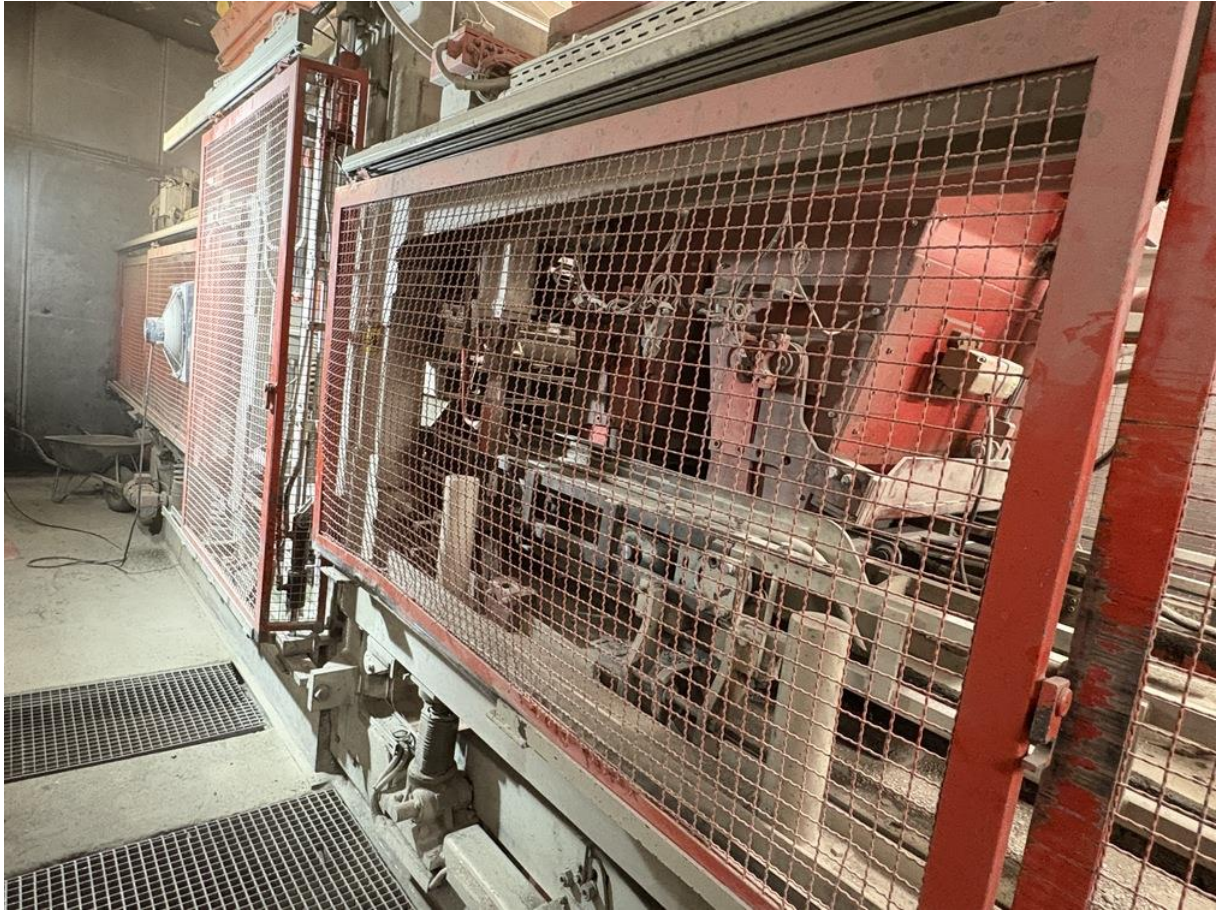


Controls for Masa Block machine





Masa Record 9001 VB





Fresh products from Masa Record 9001 VB



Machine room (noise reduction)



Output counter



Dump station for reject products



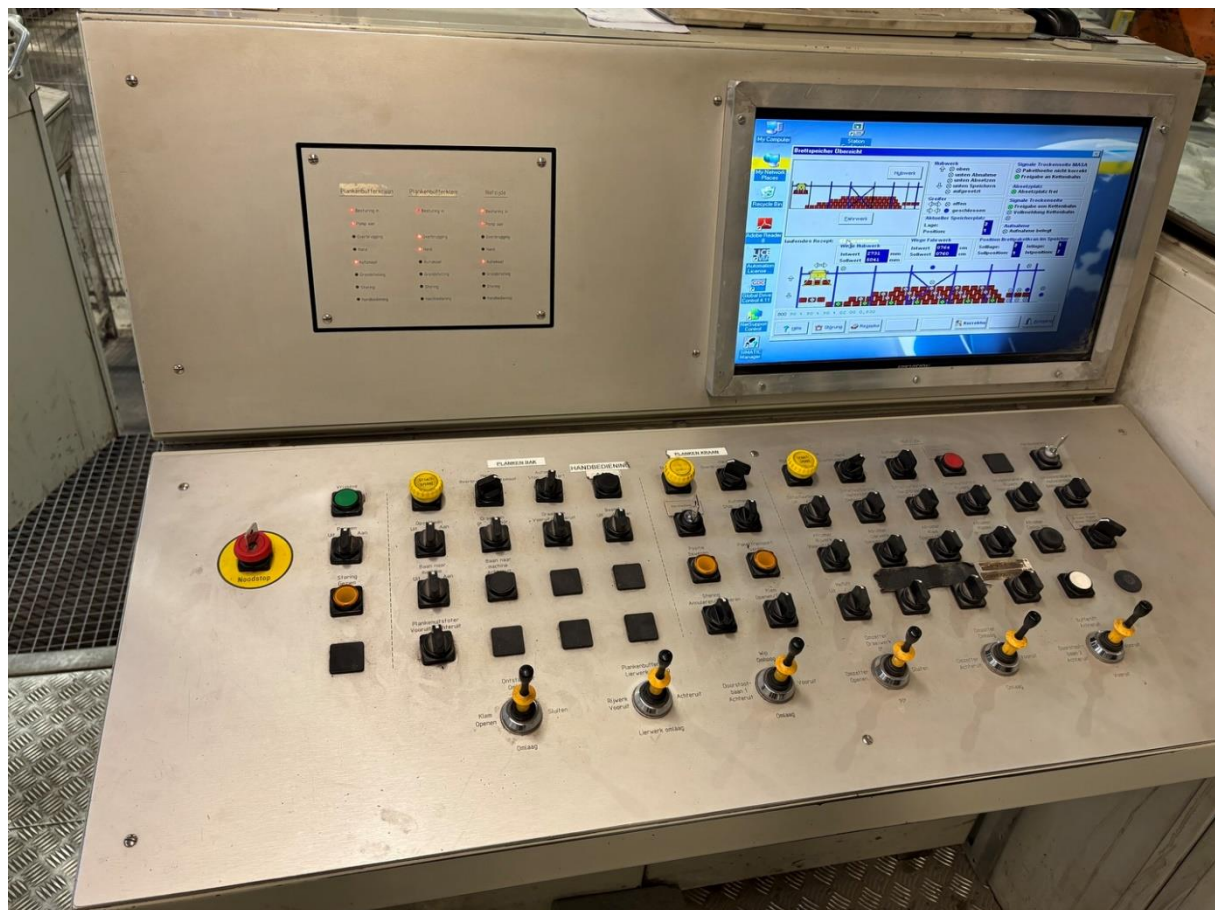
Handling of fresh product



Rotating manipulator for fresh product handling



Controls for mixing plant





Ludwig moisture sensor



Peri boards



Buffer for production boards









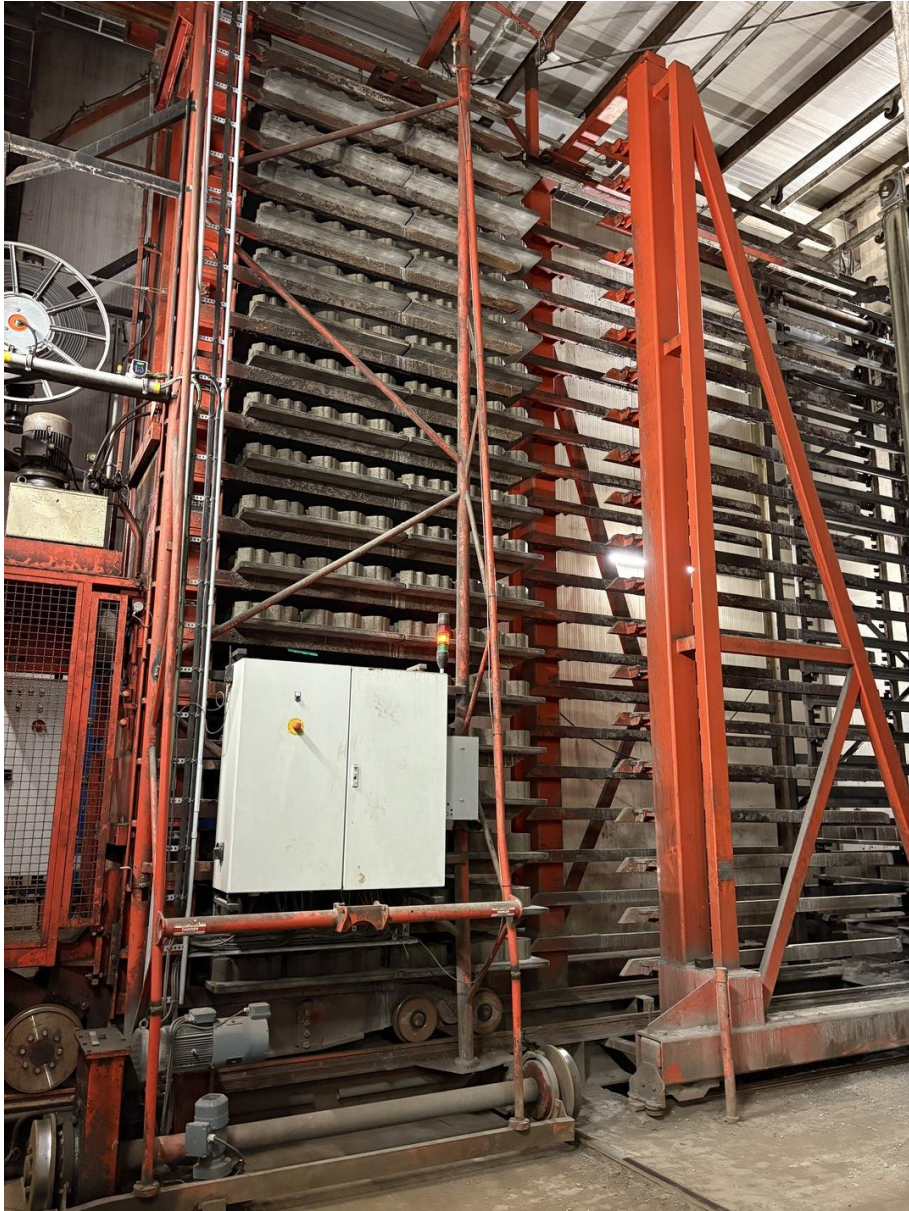
Control room



Weighing bucket for sand and aggregates



Finger car and curing chamber



Finger car taking fresh product from elevatorbuffer



Curing chamber







Lowerator with buffer



Dosing system for special aggregates



Mould storage



Spare parts



Mould storage



Storage of mould spare parts





Cart system for finished product



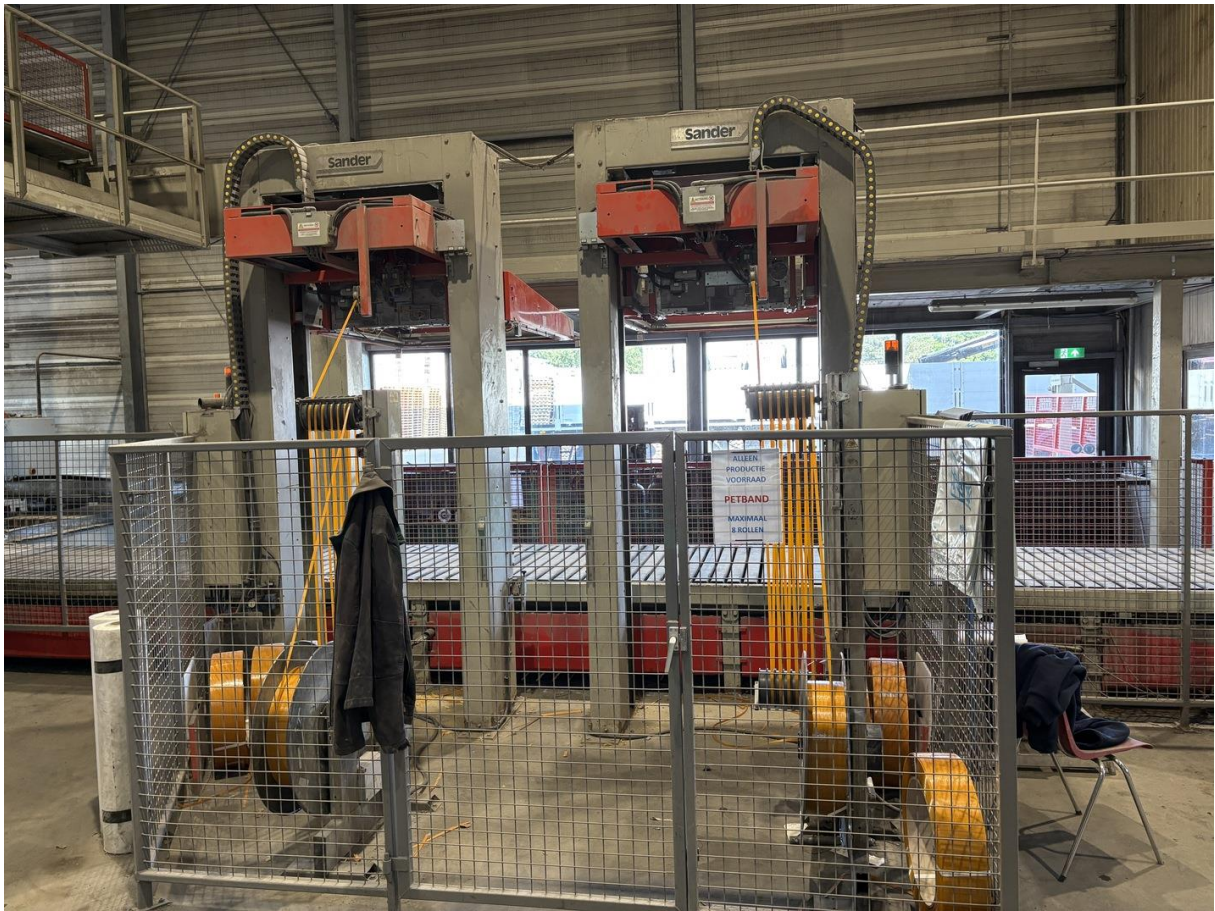
Inspection of cured stones



Packing line with double centering clamps



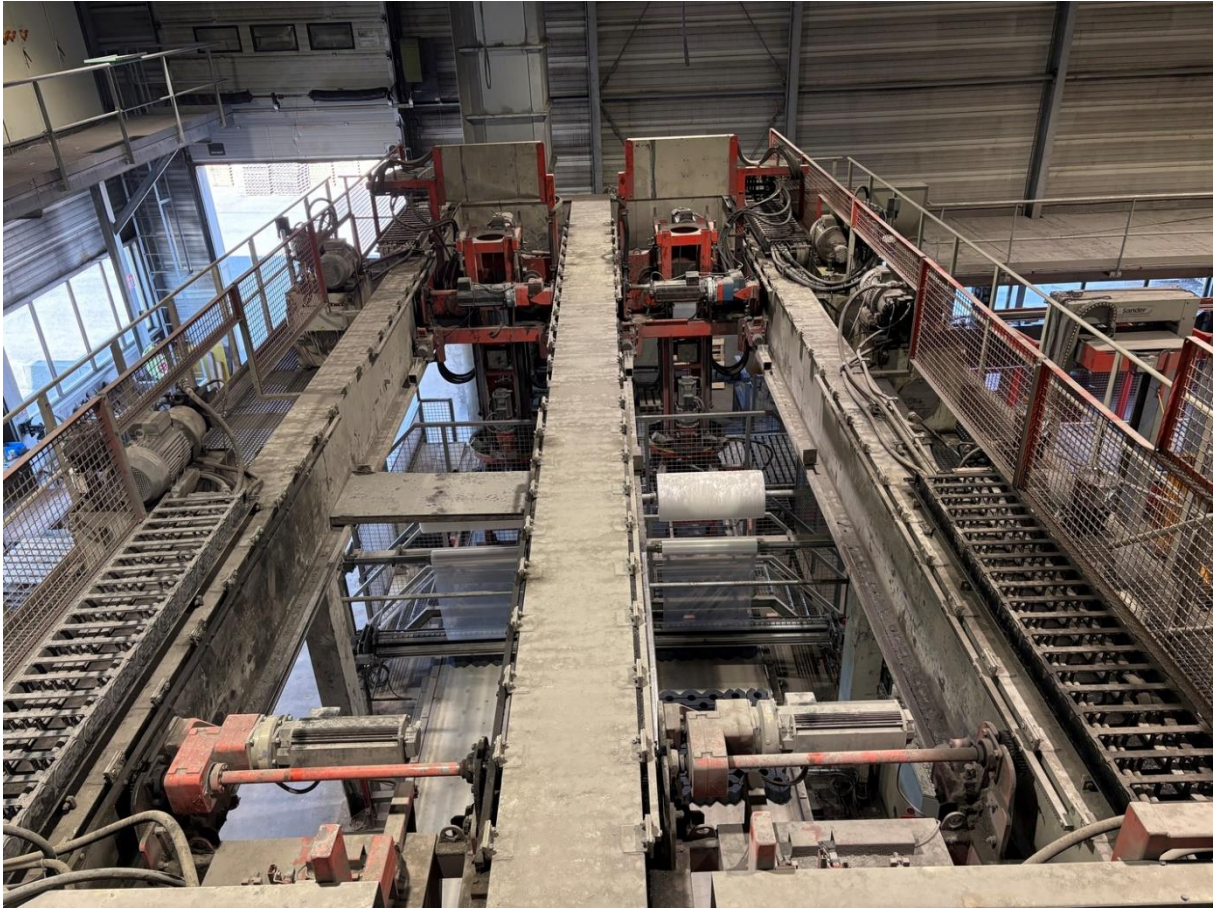
Packing line with double clamps/cubers



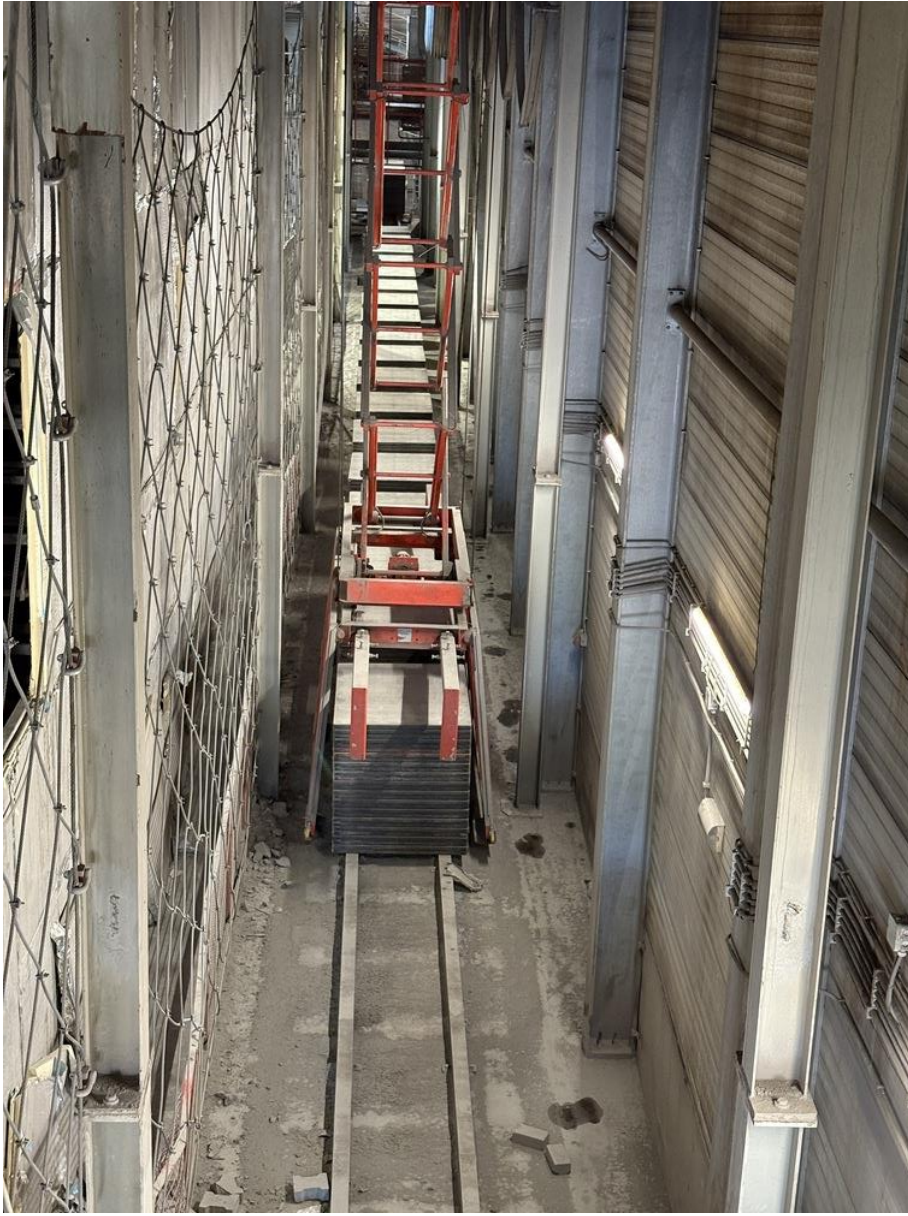
Double strappers for horizontal strapping



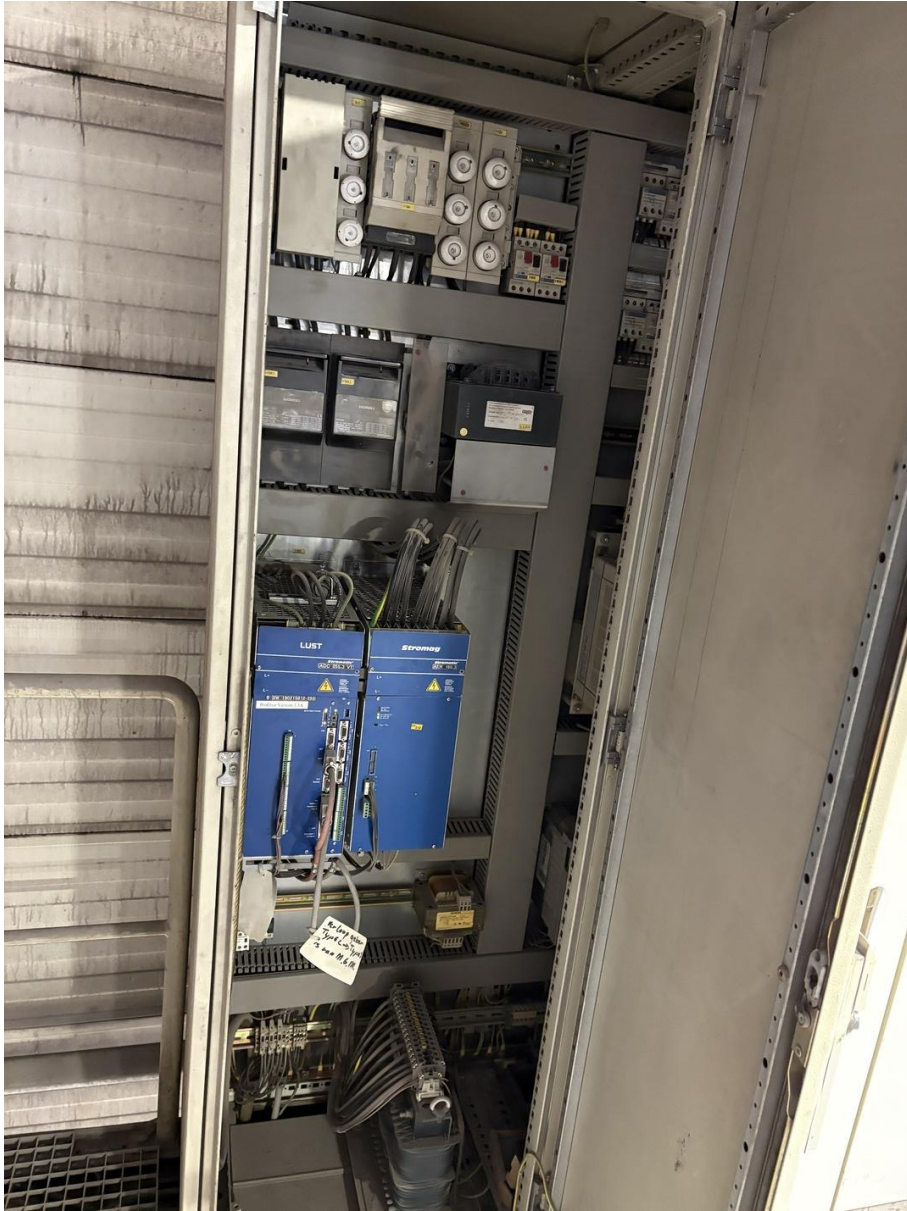
Overview of the packing line



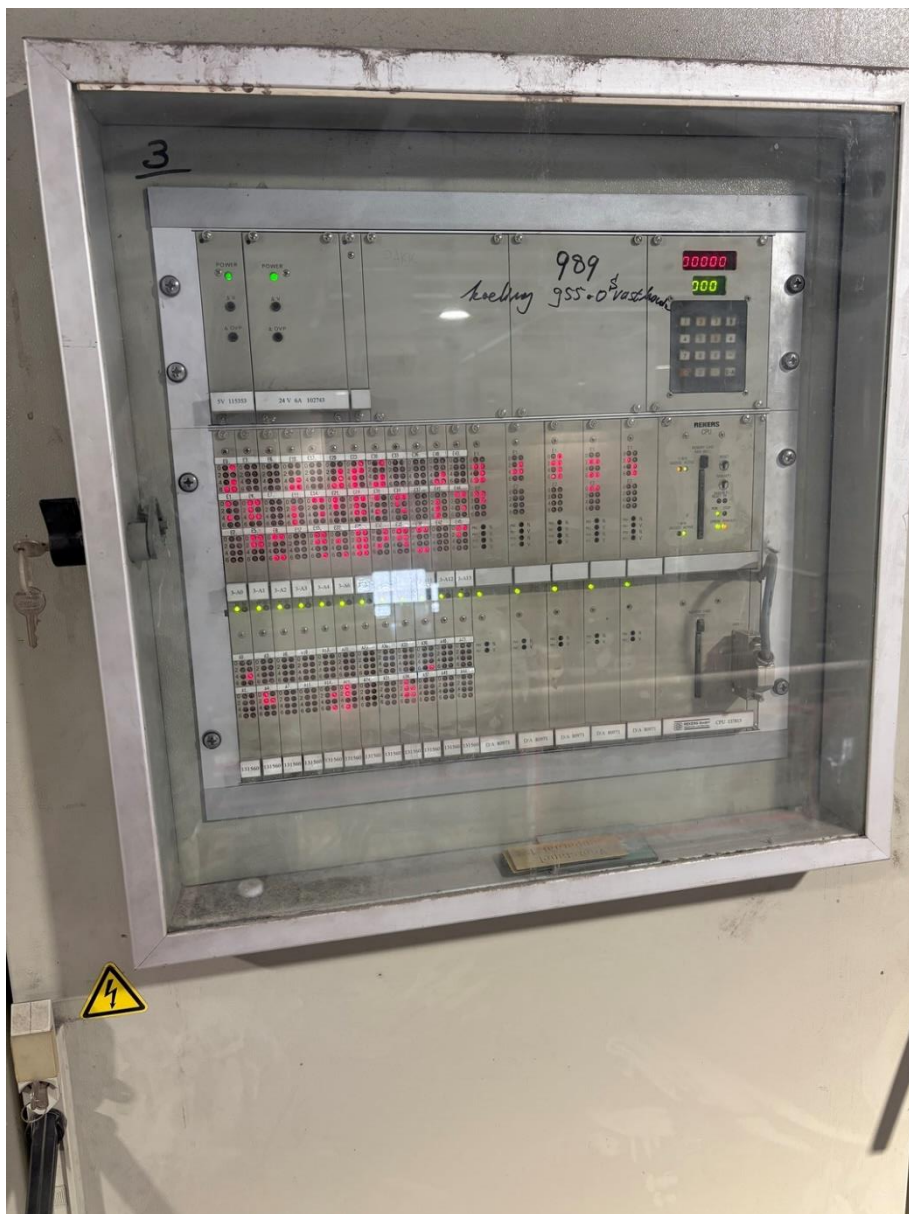
Top view of double cubers



Crane for handling stacks of boards

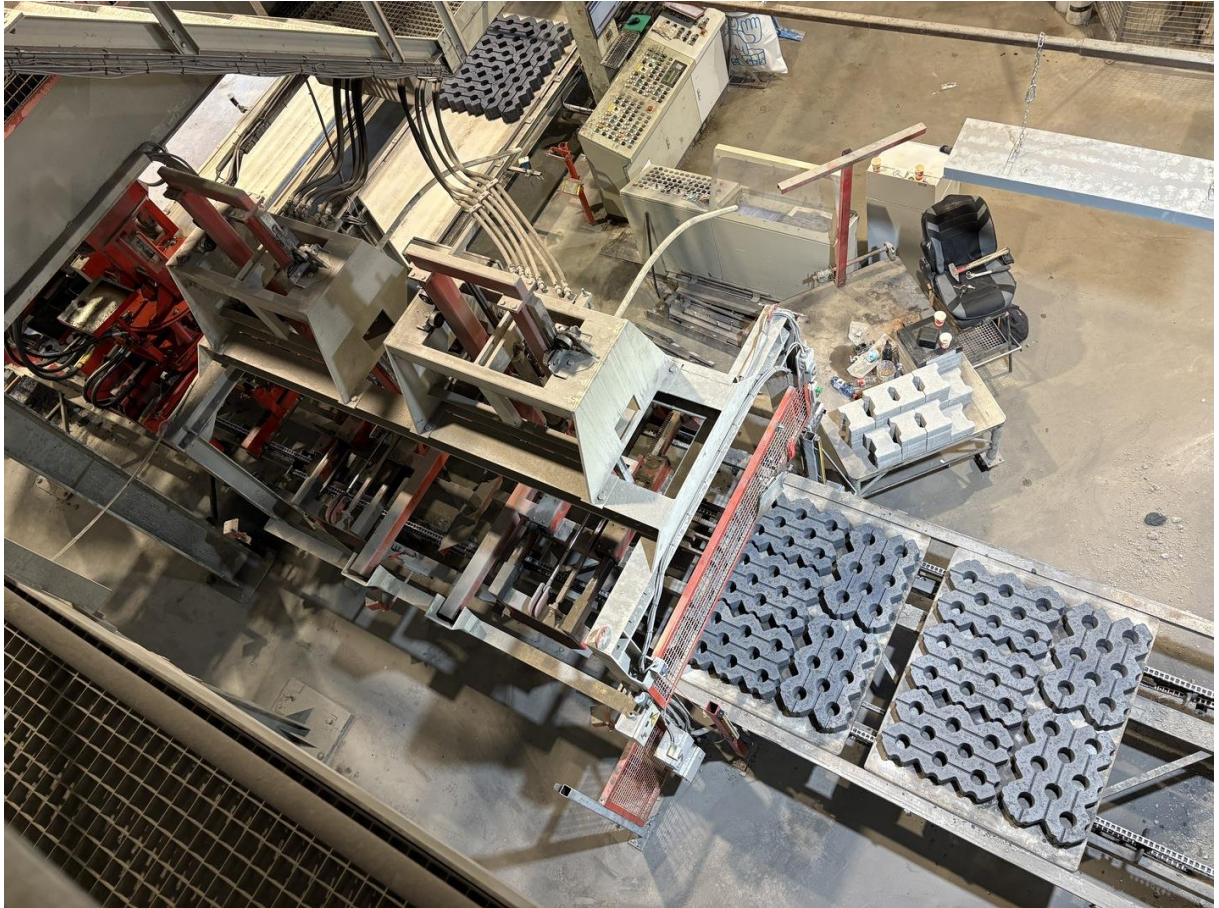


Controls of packing line





Control cabinets for packing line





Controls for strappers



Sander

Sander GmbH · Rudolfstr. 2-12 · D-42285 Wuppertal
Telefon 02 02 / 45 99-0 · Telefax 02 02 / 45 99-256

MODELL 9390 SANDERIT

KOM.-NR. 6052528643

TYP / BAUJAHR 97

AGG.-NR. TR 14035-0902

STROMART Ph 3

FREQUENZ Hz 50

BETRIEBSSPANNUNG V 400

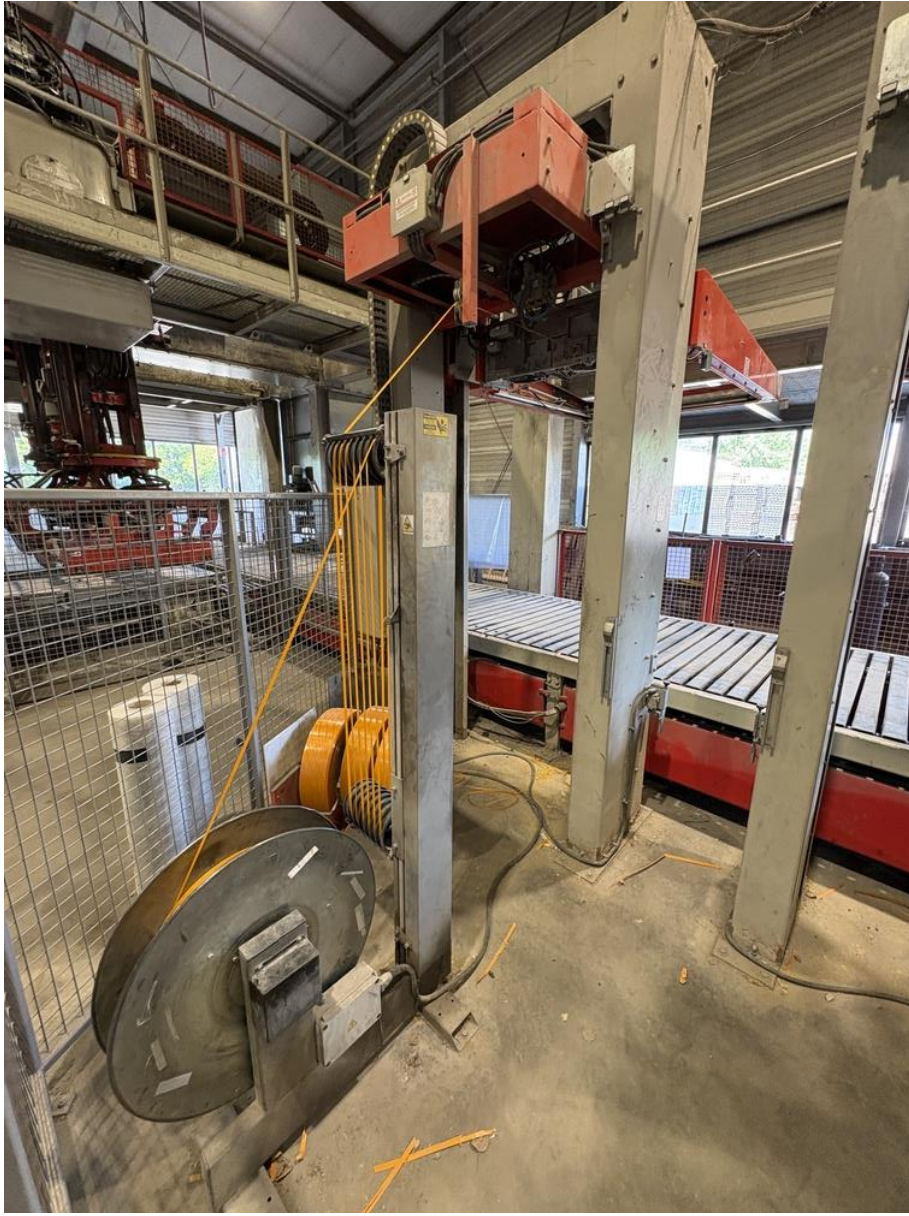
ISOLATIONSSPANNUNG V EN 60204-1

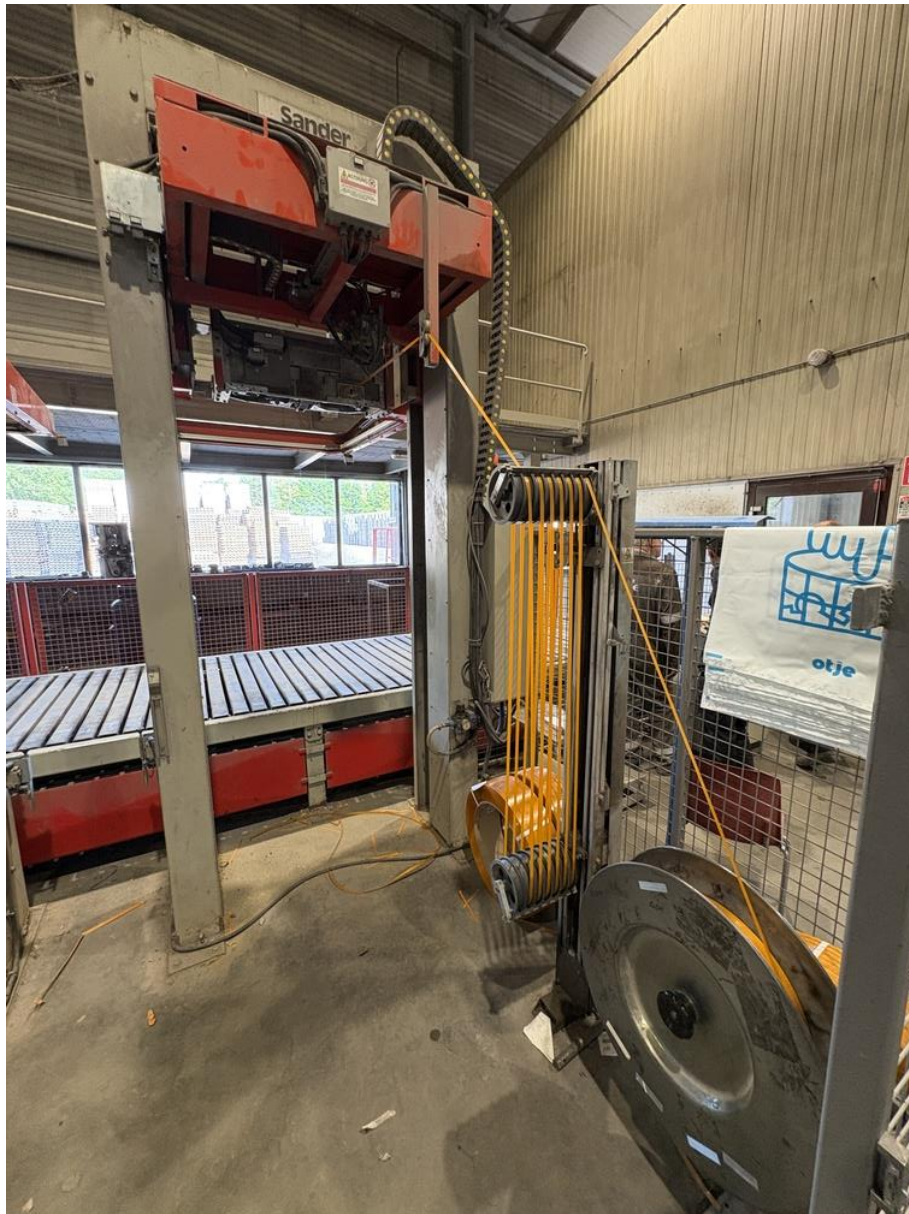
STROM A

LEISTUNG kW 2

STEUERSPANNUNG 240V AC/DC

ON 6808







Cuber



Pallet destacker



Handling of cubes of finished product





Cart system for efficient product transport



Guiding of cart system



Pallet destacker



Double cubers



Double clamps







Crane for placing cubes onto transportation carts

