
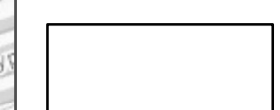


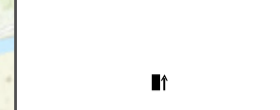



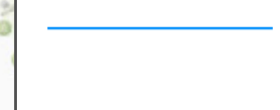
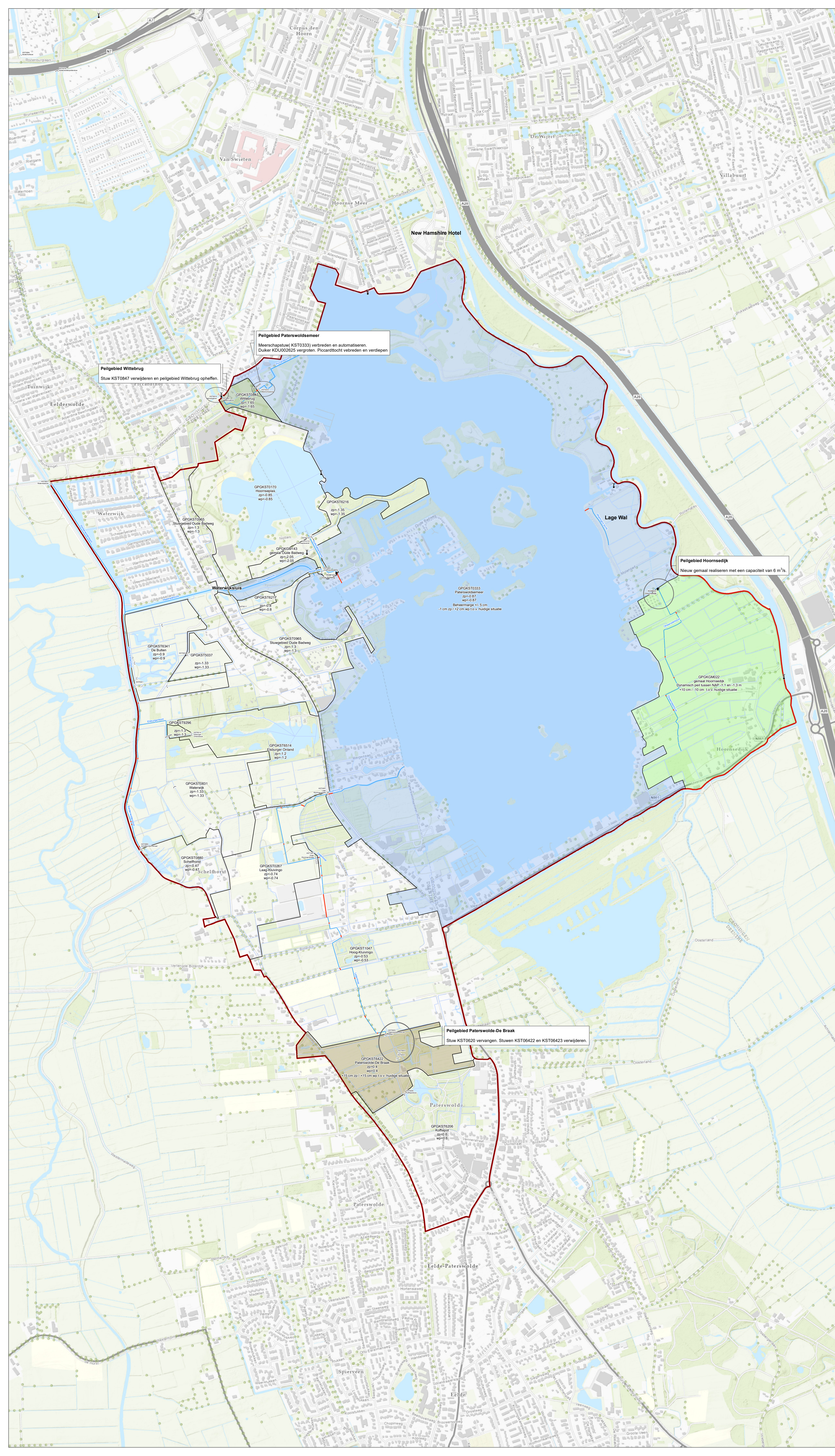


Legenda

-  Plangebiedgrens
-  Peilgebied (peilen in NAP m)
-  Sifon
-  Inlaat
-  afvoergemaal
-  Stuw
-  Duiker
- Oppervlaktewater**
-  Hoofdwatergang
-  Sloten



Peilgebied Wittebrug
Stuw KST0847 verwijderen en peilgebied Wittebrug ophellen.

Peilgebied Paterswoldsemeer
Meenschapstuw KST0333 verbreiden en automatiseren.
Duiker KDU002825 vergroten. Picardtocht verbreiden en verdiepen.

Peilgebied Hoornsediijk
Nieuw gemaal realiseren met een capaciteit van 6 m³/s

Peilgebied Paterswoldse-De Braak
Stuw KST0620 vervangen. Stuw KST06422 en KST06423 verwijderen.

Peilbesluit Paterswoldsemeer

Peilvoorstel en maatregelen

opdrachtgever: Waterschap Noorderzijlvest



datum: 11-1-2022
schaal (A2): 1:6,000
0 0,05 0,1 0,2 Kilometers