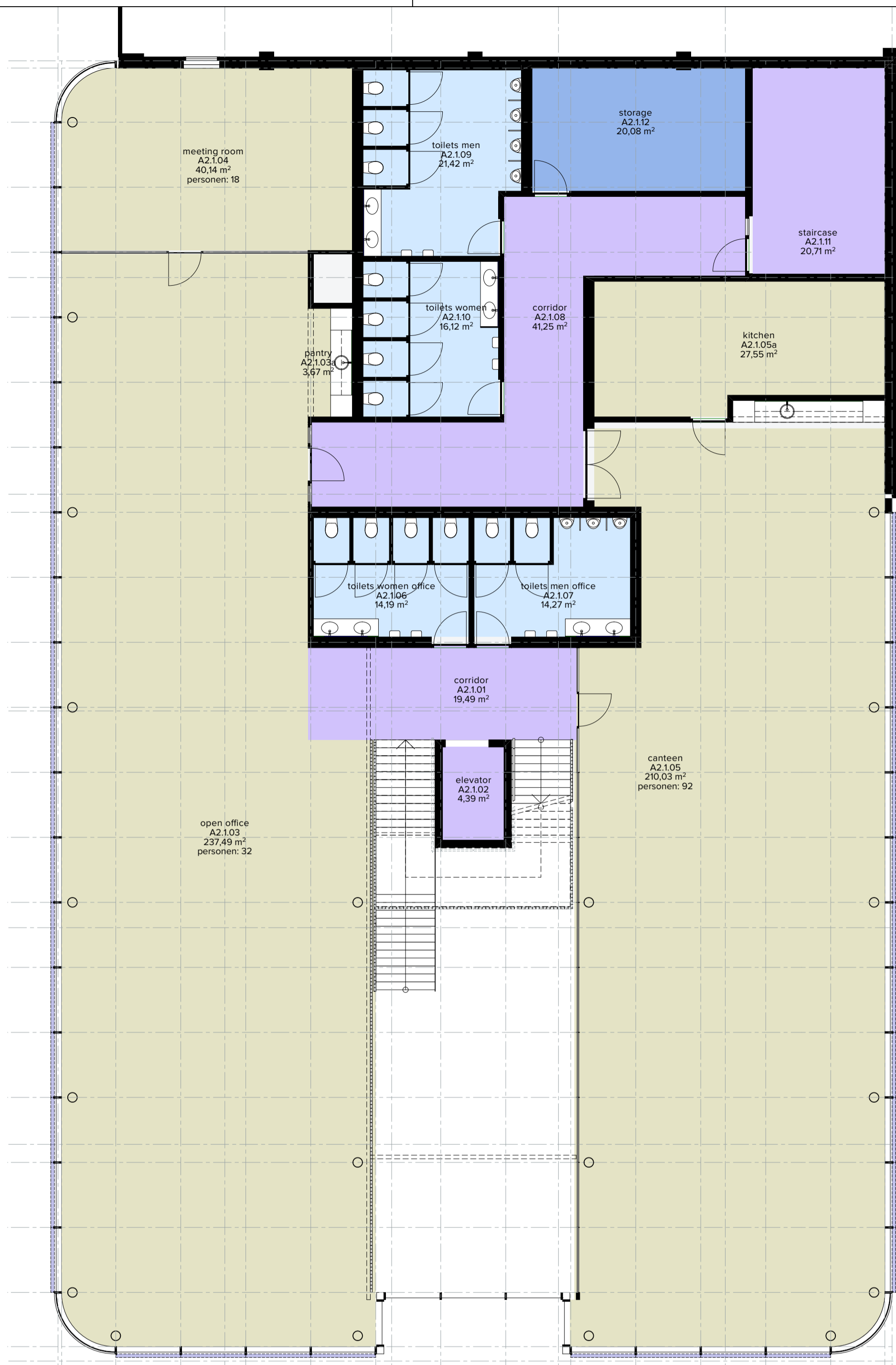
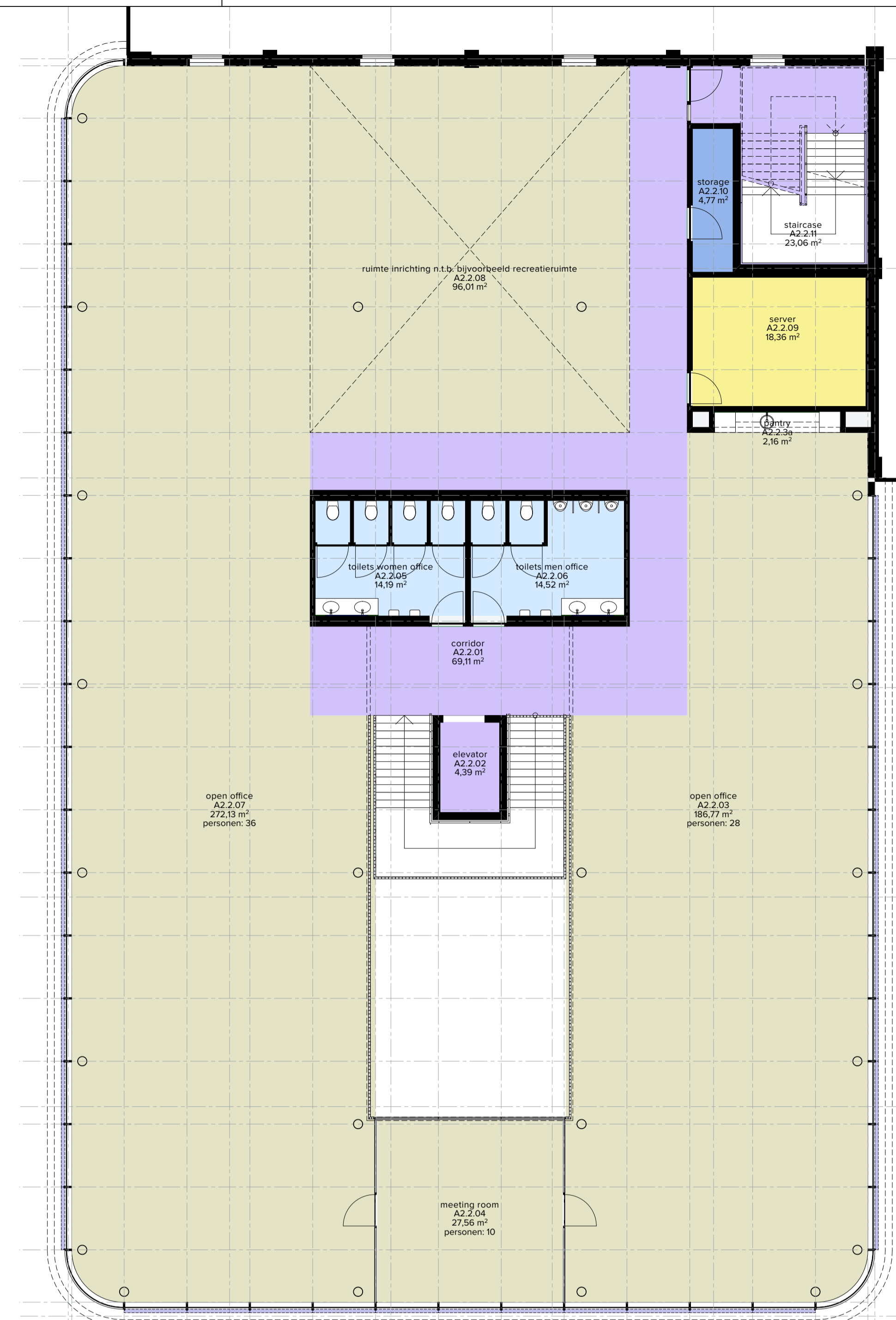


begane grond



1e verdieping



2e verdieping

| verdieping          | nr.                  | naam              | omschrijving bouwbesluit | personen | oppervlak           |
|---------------------|----------------------|-------------------|--------------------------|----------|---------------------|
| <b>begane grond</b> |                      |                   |                          |          |                     |
| A2.0.01             | entrance             | Verkeersruimte    |                          | 0        | 21,37               |
| A2.0.01a            | waiting area         | Verkeersruimte    |                          | 4        | 12,08               |
| A2.0.01b            | entrance hall        | Verkeersruimte    |                          | 0        | 68,34               |
| A2.0.02             | elevator             | Verkeersruimte    |                          | 0        | 4,39                |
| A2.0.03             | hall                 | Verkeersruimte    |                          | 0        | 14,43               |
| A2.0.03a            | pantry               | Verblifruimte     |                          | 0        | 1,23                |
| A2.0.04a            | toilets women office | Toilettruimte     |                          | 0        | 11,30               |
| A2.0.04b            | toilets men office   | Toilettruimte     |                          | 0        | 13,63               |
| A2.0.05a            | meeting room         | Verblifruimte     |                          | 16       | 28,25               |
| A2.0.05b            | meeting room         | Verblifruimte     |                          | 16       | 31,43               |
| A2.0.06             | open office          | Verblifruimte     |                          | 42       | 271,68              |
| A2.0.06a            | pantry               | Verblifruimte     |                          | 0        | 3,77                |
| A2.0.07             | reception            | Verblifruimte     |                          | 8        | 72,63               |
| A2.0.08             | drivers              | Verblifruimte     |                          | 3        | 26,81               |
| A2.0.08a            | toilet drivers       | Toilettruimte     |                          | 0        | 1,35                |
| A2.0.09             | corridor             | Verkeersruimte    |                          | 0        | 31,58               |
| A2.0.10             | MIVA                 | Toilettruimte     |                          | 0        | 5,69                |
| A2.0.11             | staircase            | Verkeersruimte    |                          | 0        | 20,71               |
| A2.0.12             | lockers women        | Kleedruimte       |                          | 0        | 32,78               |
| A2.0.13             | lockers men          | Kleedruimte       |                          | 0        | 56,87               |
| A2.0.14             | toilets men          | Toilettruimte     |                          | 0        | 18,13               |
| A2.0.15             | toilets women        | Toilettruimte     |                          | 0        | 18,49               |
| A2.0.OVK.1          | OVK 1                | Technische ruimte |                          | 0        | 0,95                |
| WA2.0.01            | WAREHOUSE A2         | Bergruimte        |                          | 142      | 28.313,06           |
| WA2.0.02            | EXPEDITIE A2         | Bergruimte        |                          | 49       | 2.321,81            |
| WA2.0.03            | WST3a BREAM          | Bergruimte        |                          | 0        | 25,00               |
| WA2.0.04            | escape stair A2      | Bergruimte        |                          | 0        | 14,50               |
| WA2.0.05            | escape stair A2      | Bergruimte        |                          | 0        | 14,50               |
| WA2.0.06            | POMPROOC A1/A2/A3/A4 | Bergruimte        |                          | 102      | 115,96              |
|                     |                      |                   |                          |          | <b>31.572,72 m²</b> |

|                      |                                       |                   |    |          |
|----------------------|---------------------------------------|-------------------|----|----------|
| A2.1.05a             | kitchen                               | Verblifruimte     | 0  | 27,55    |
| A2.1.06              | toilets women office                  | Toilettruimte     | 0  | 14,19    |
| A2.1.07              | toilets men office                    | Toilettruimte     | 0  | 14,27    |
| A2.1.08              | corridor                              | Verkeersruimte    | 0  | 41,25    |
| A2.1.09              | toilets men                           | Toilettruimte     | 0  | 21,42    |
| A2.1.10              | toilets women                         | Toilettruimte     | 0  | 16,12    |
| A2.1.11              | staircase                             | Verkeersruimte    | 0  | 20,71    |
| A2.1.12              | storage                               | Bergruimte        | 0  | 20,08    |
| <b>690,80 m²</b>     |                                       |                   |    |          |
| <b>mezzanine</b>     |                                       |                   |    |          |
| WA2.M.01             | MEZZANINE A2                          | Bergruimte        | 51 | 2.505,60 |
| <b>2.505,60 m²</b>   |                                       |                   |    |          |
| <b>2e verdieping</b> |                                       |                   |    |          |
| A2.2.01              | corridor                              | Verkeersruimte    | 0  | 69,11    |
| A2.2.02              | elevator                              | Verkeersruimte    | 0  | 4,39     |
| A2.2.03              | open office                           | Verblifruimte     | 28 | 186,77   |
| A2.2.3a              | pantry                                | Verblifruimte     | 0  | 2,16     |
| A2.2.04              | meeting room                          | Verblifruimte     | 10 | 27,56    |
| A2.2.05              | toilets women office                  | Toilettruimte     | 0  | 14,19    |
| A2.2.06              | toilets men office                    | Toilettruimte     | 0  | 14,52    |
| A2.2.07              | open office                           | Verblifruimte     | 36 | 272,13   |
| A2.2.08              | ruimte inrichting n.t.b. bijvoorbeeld | Verblifruimte     | 0  | 96,01    |
| A2.2.09              | server                                | Technische ruimte | 0  | 18,36    |
| A2.2.10              | storage                               | Bergruimte        | 0  | 4,77     |
| A2.2.11              | staircase                             | Verkeersruimte    | 0  | 23,06    |
| <b>733,03 m²</b>     |                                       |                   |    |          |
| <b>35.502,15 m²</b>  |                                       |                   |    |          |

| 1e verdieping | nr.          | naam           | omschrijving bouwbesluit | personen | oppervlak |
|---------------|--------------|----------------|--------------------------|----------|-----------|
| A2.1.01       | corridor     | Verkeersruimte |                          | 0        | 19,49     |
| A2.1.02       | elevator     | Verkeersruimte |                          | 0        | 4,39      |
| A2.1.03       | open office  | Verblifruimte  |                          | 32       | 237,49    |
| A2.1.03a      | pantry       | Verblifruimte  |                          | 0        | 3,67      |
| A2.1.04       | meeting room | Verblifruimte  |                          | 18       | 40,14     |
| A2.1.05       | canteen      | Verblifruimte  |                          | 92       | 210,03    |
| A2.1.05a      | kitchen      | Verblifruimte  |                          | 0        | 27,55     |