

## OP0060054 - Veere Lichtplan Kindcentrum OKP\_Rev-0\_LB\_2026-02-18

Park P5:  
Egem: 3 Lux;  
20% gelijkmatigheid;

Parking P5:  
Egem: 3 Lux;  
20% gelijkmatigheid;

Straat P5:  
Egem 3 Lux;  
20% gelijkmatigheid;

## Inhoud

|                |   |
|----------------|---|
| Voorblad ..... | 1 |
| Inhoud .....   | 2 |

## Productgegevens

|  |   |
|--|---|
| Schröder - FLEXIA FG MIDI 5392 Flat glass 10 LEDs LED@300mA Driver@300mA ..... | 3 |
| WW 730 230V 03-55-699 510782 (1x 10 LEDs@300mA WW 730 230V 03-55-699)          |   |
| Schröder - TECEO S 5393 Flat glass 20 LEDs LED@200mA Driver@200mA WW .....     | 4 |
| 730 230V 00-36-646 524532 (1x 20 LEDs@200mA WW 730 230V 00-36-646)             |   |

## Kindcentrum OKP

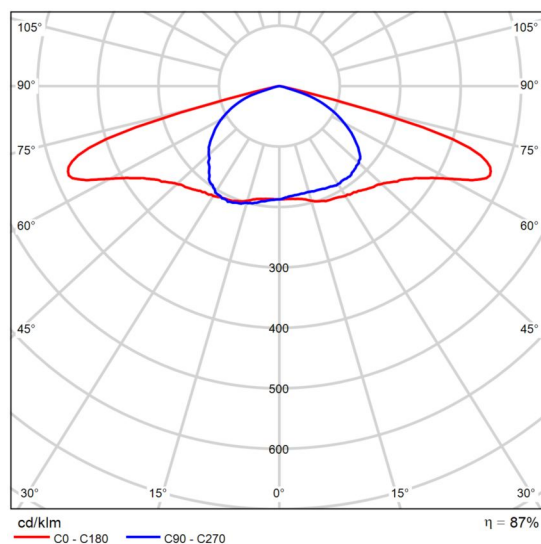
|   |    |
|---|----|
| Beelden .....   | 5  |
| Positieschema armaturen .....                                 | 6  |
| Armaturenlijst .....  | 9  |
| Berekeningobjecten / Lichtscene 1 .....                       | 10 |
| Parking / Lichtscene 1 / Loodrechte verlichtingssterkte ..... | 12 |
| Park / Lichtscene 1 / Loodrechte verlichtingssterkte .....    | 13 |
| Straat / Lichtscene 1 / Loodrechte verlichtingssterkte .....  | 14 |

## Productgegevensblad

Schröder - FLEXIA FG MIDI 5392 Flat glass 10 LEDs LED@300mA Driver@300mA WW 730 230V 03-55-699 510782



|                   |            |
|-------------------|------------|
| Artikelnr.        | 510782     |
| P                 | 10.1 W     |
| $\Phi_{Lamp}$     | 1644 lm    |
| $\Phi_{Armatuur}$ | 1435 lm    |
| $\eta$            | 87.31 %    |
| Lichtrendement    | 142.1 lm/W |
| CCT               | 3000 K     |
| CRI               | 70         |



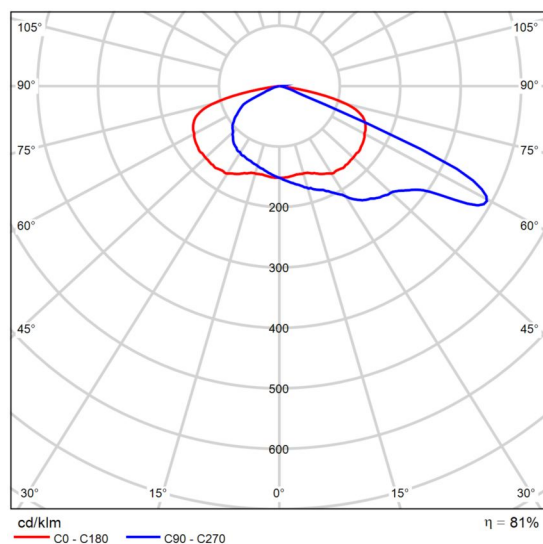
Polaire LVK

## Productgegevensblad

Schröder - TECEO S 5393 Flat glass 20 LEDs LED@200mA Driver@200mA WW 730 230V 00-36-646 524532



|                   |            |
|-------------------|------------|
| Artikelnr.        | 524532     |
| P                 | 13.1 W     |
| $\Phi_{Lamp}$     | 2260 lm    |
| $\Phi_{Armatuur}$ | 1832 lm    |
| $\eta$            | 81.05 %    |
| Lichtrendement    | 139.8 lm/W |
| CCT               | 3000 K     |
| CRI               | 70         |



Polaire LVK

Kindcentrum OKP  
**Beelden**

Teceo

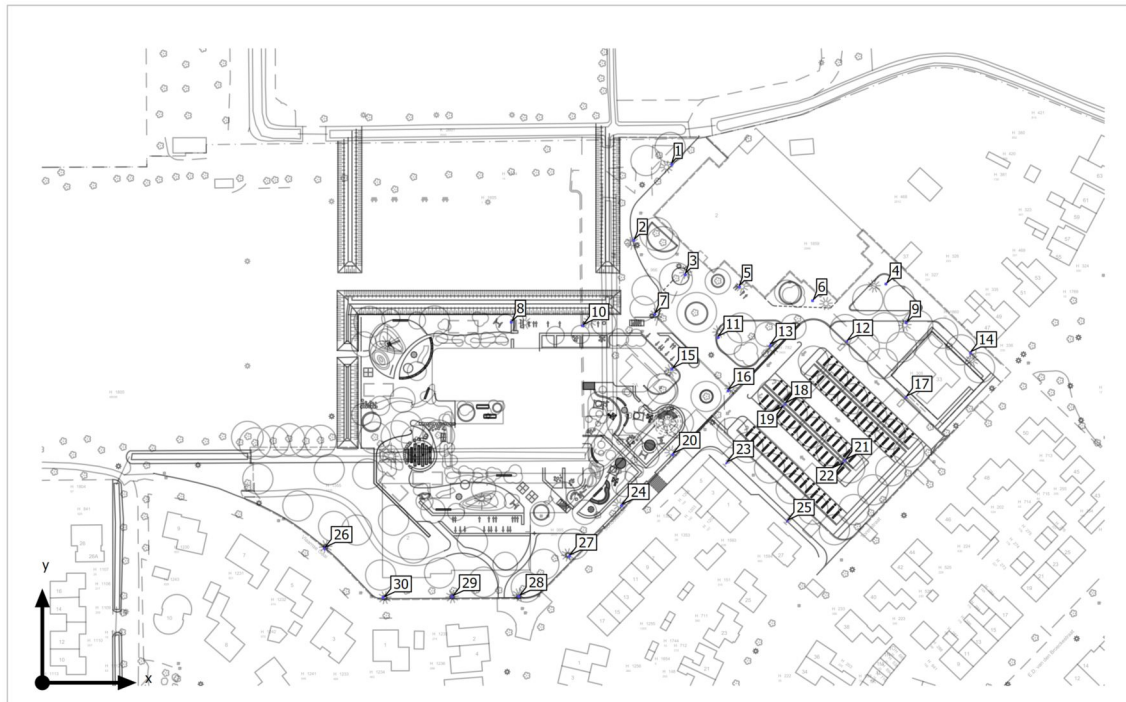


Flexia met Evens uithouder



Kindcentrum OKP

## Positieschema armaturen



Kindcentrum OKP

## Positieschema armaturen

Schröder - 510782 - FLEXIA FG MIDI 5392 Flat glass 10 LEDs LED@300mA Driver@300mA WW 730  
 230V 03-55-699 510782

1x 10 LEDs@300mA WW 730 230V 03-55-699

| X         | Y         | Montagehoogte | Armatuur rotatie      | Armatuur |
|-----------|-----------|---------------|-----------------------|----------|
| 210.879 m | 173.635 m | 4.700 m       | 0.0° / 0.0° / -135.0° | 1        |
| 198.077 m | 148.239 m | 4.700 m       | 0.0° / 0.0° / -88.0°  | 2        |
| 215.358 m | 136.707 m | 4.700 m       | 0.0° / 0.0° / -47.0°  | 3        |
| 282.565 m | 133.599 m | 4.700 m       | 0.0° / 0.0° / -3.0°   | 4        |
| 233.518 m | 132.647 m | 4.700 m       | 0.0° / 0.0° / 139.0°  | 5        |
| 258.000 m | 128.000 m | 4.700 m       | 0.0° / 0.0° / -180.0° | 6        |
| 205.202 m | 123.460 m | 4.700 m       | 0.0° / 0.0° / -145.0° | 7        |
| 157.061 m | 120.807 m | 4.700 m       | 0.0° / 0.0° / 180.0°  | 8        |
| 289.344 m | 120.584 m | 4.700 m       | 0.0° / 0.0° / 0.0°    | 9        |
| 180.950 m | 119.618 m | 4.700 m       | 0.0° / 0.0° / 180.0°  | 10       |
| 226.383 m | 115.667 m | 4.700 m       | 0.0° / 0.0° / 135.0°  | 11       |
| 243.836 m | 112.971 m | 4.700 m       | 0.0° / 0.0° / -134.0° | 13       |
| 310.944 m | 110.444 m | 4.700 m       | 0.0° / 0.0° / -45.0°  | 14       |
| 210.848 m | 105.102 m | 4.700 m       | 0.0° / 0.0° / -92.0°  | 15       |
| 229.742 m | 97.830 m  | 4.700 m       | 0.0° / 0.0° / -134.0° | 16       |
| 211.189 m | 76.454 m  | 4.700 m       | 0.0° / 0.0° / -136.0° | 20       |
| 193.998 m | 59.337 m  | 4.700 m       | 0.0° / 0.0° / -136.0° | 24       |
| 94.541 m  | 44.883 m  | 4.700 m       | 0.0° / 0.0° / 134.0°  | 26       |
| 176.549 m | 42.339 m  | 4.700 m       | 0.0° / 0.0° / -136.0° | 27       |
| 159.610 m | 28.897 m  | 4.700 m       | 0.0° / 0.0° / -172.0° | 28       |
| 137.232 m | 28.834 m  | 4.700 m       | 0.0° / 0.0° / 179.0°  | 29       |

Kindcentrum OKP

## Positieschema armaturen

| X         | Y        | Montagehoogte | Armatuur rotatie     | Armatuur |
|-----------|----------|---------------|----------------------|----------|
| 114.177 m | 28.484 m | 4.700 m       | 0.0° / 0.0° / 169.0° | 30       |

Schröder - 524532 - TECEO S 5393 Flat glass 20 LEDs LED@200mA Driver@200mA WW 730 230V  
 00-36-646 524532  
 1x 20 LEDs@200mA WW 730 230V 00-36-646

| X         | Y         | Montagehoogte | Armatuur rotatie     | Armatuur |
|-----------|-----------|---------------|----------------------|----------|
| 269.566 m | 114.377 m | 6.000 m       | 5.0° / 0.0° / 136.0° | 12       |
| 289.359 m | 95.667 m  | 6.000 m       | 5.0° / 0.0° / 138.0° | 17       |
| 248.865 m | 93.453 m  | 6.000 m       | 5.0° / 0.0° / -44.0° | 18       |
| 247.985 m | 92.651 m  | 6.000 m       | 5.0° / 0.0° / 136.0° | 19       |
| 268.957 m | 74.540 m  | 6.000 m       | 5.0° / 0.0° / -44.0° | 21       |
| 268.124 m | 73.736 m  | 6.000 m       | 5.0° / 0.0° / 136.0° | 22       |
| 229.216 m | 73.654 m  | 6.000 m       | 5.0° / 0.0° / -44.0° | 23       |
| 249.494 m | 54.092 m  | 6.000 m       | 5.0° / 0.0° / -44.0° | 25       |

Kindcentrum OKP  
**Armaturenlijst**
 $\Phi_{\text{totaal}}$ 

46226 lm

 $P_{\text{totaal}}$ 

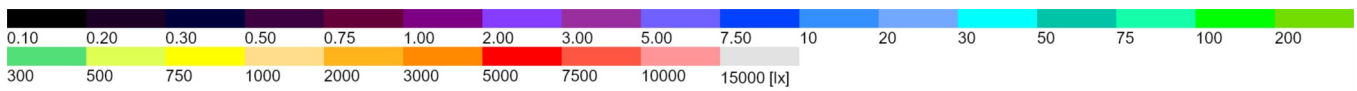
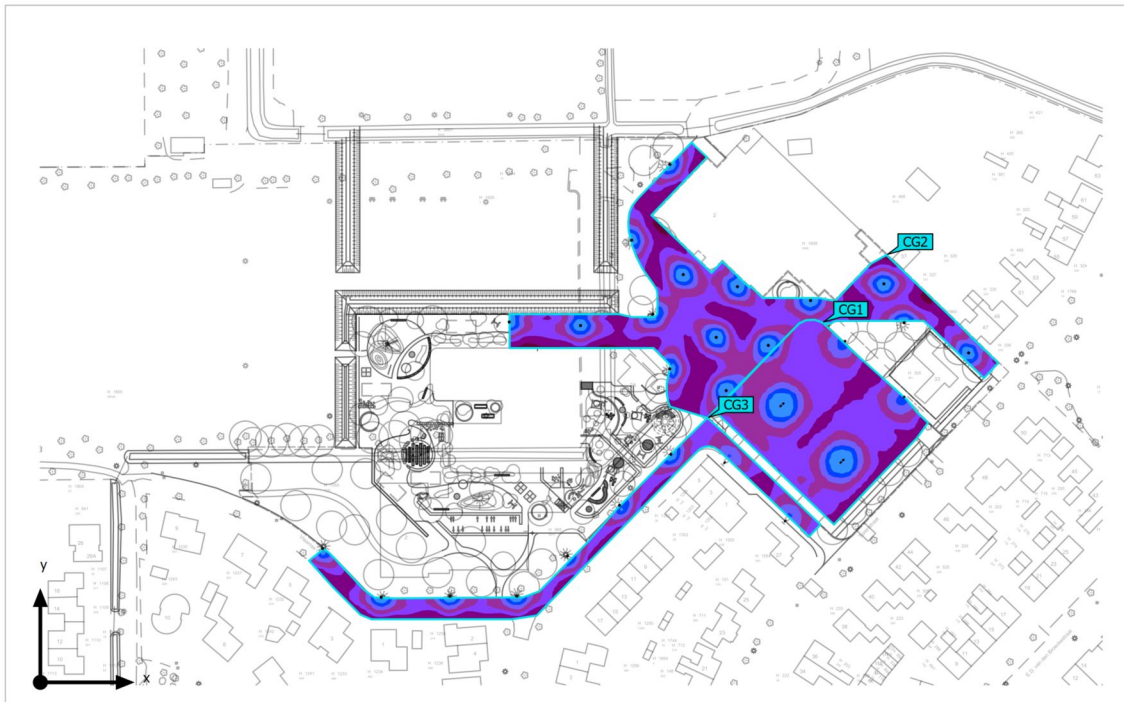
327.0 W

Lichtrendement

141.4 lm/W

| Stuk | Fabrikant | Artikelnr. | Artikelnaam  | P      | $\Phi$  | Lichtrendement |
|------|-----------|------------|--|--------|---------|----------------|
| 22   | Schröder  | 510782     | FLEXIA FG MIDI 5392 Flat glass 10 LEDs LED@300mA Driver@300mA WW 730 230V 03-55-699 510782 | 10.1 W | 1435 lm | 142.1 lm/W     |
| 8    | Schröder  | 524532     | TECEO S 5393 Flat glass 20 LEDs LED@200mA Driver@200mA WW 730 230V 00-36-646 524532        | 13.1 W | 1832 lm | 139.8 lm/W     |

Kindcentrum OKP (Lichtscene 1)  
**Berekeningobjecten**



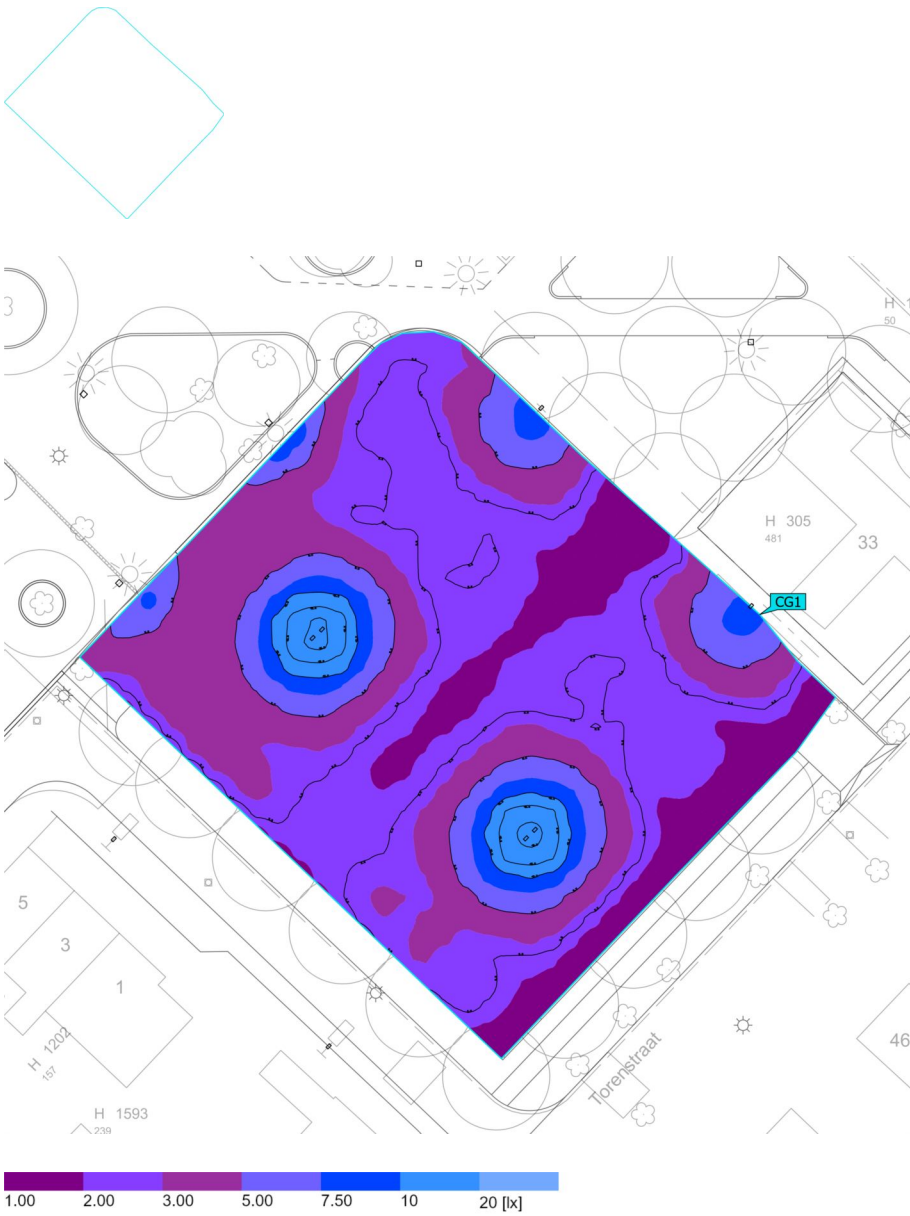
Kindcentrum OKP (Lichtscene 1)

## Berekeningobjecten

Berekeningvlakken

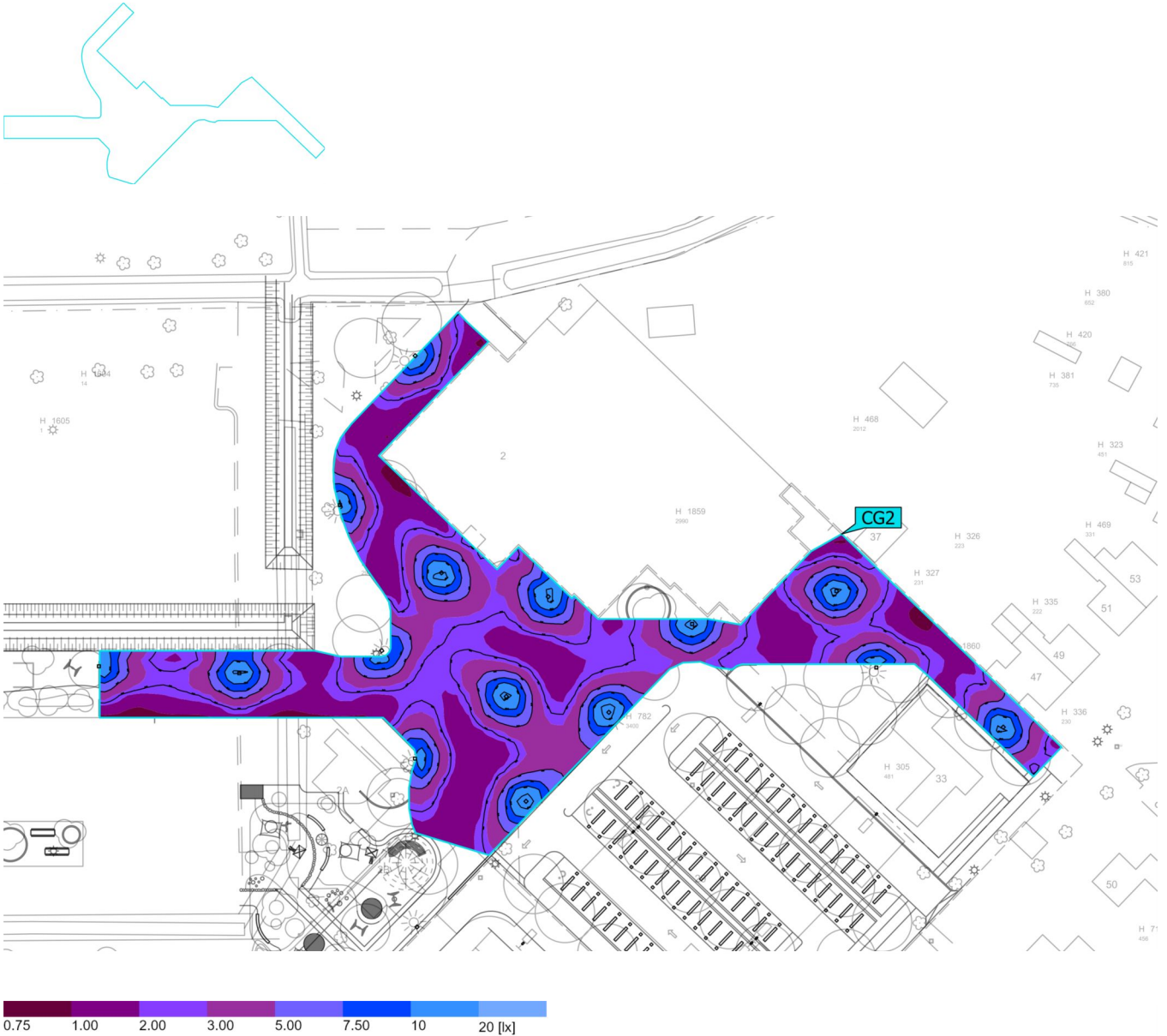
| Eigenschappen  | $\bar{E}$ | $E_{min}$ | $E_{max}$ | $U_0 (g_1)$ | $g_2$ | Index |
|--|-----------|-----------|-----------|-------------|-------|-------|
| Park<br>Loodrechte verlichtingssterkte<br>Hoogte: 0.000 m    | 3.85 lx   | 0.78 lx   | 14.0 lx   | 0.20        | 0.056 | CG2   |
| Parking<br>Loodrechte verlichtingssterkte<br>Hoogte: 0.000 m | 3.76 lx   | 1.02 lx   | 16.3 lx   | 0.27        | 0.063 | CG1   |
| Straat<br>Loodrechte verlichtingssterkte<br>Hoogte: 0.000 m  | 3.62 lx   | 0.93 lx   | 13.0 lx   | 0.26        | 0.072 | CG3   |

Kindcentrum OKP (Lichtscene 1)  
**Parking**



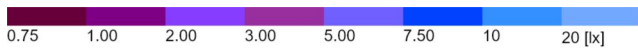
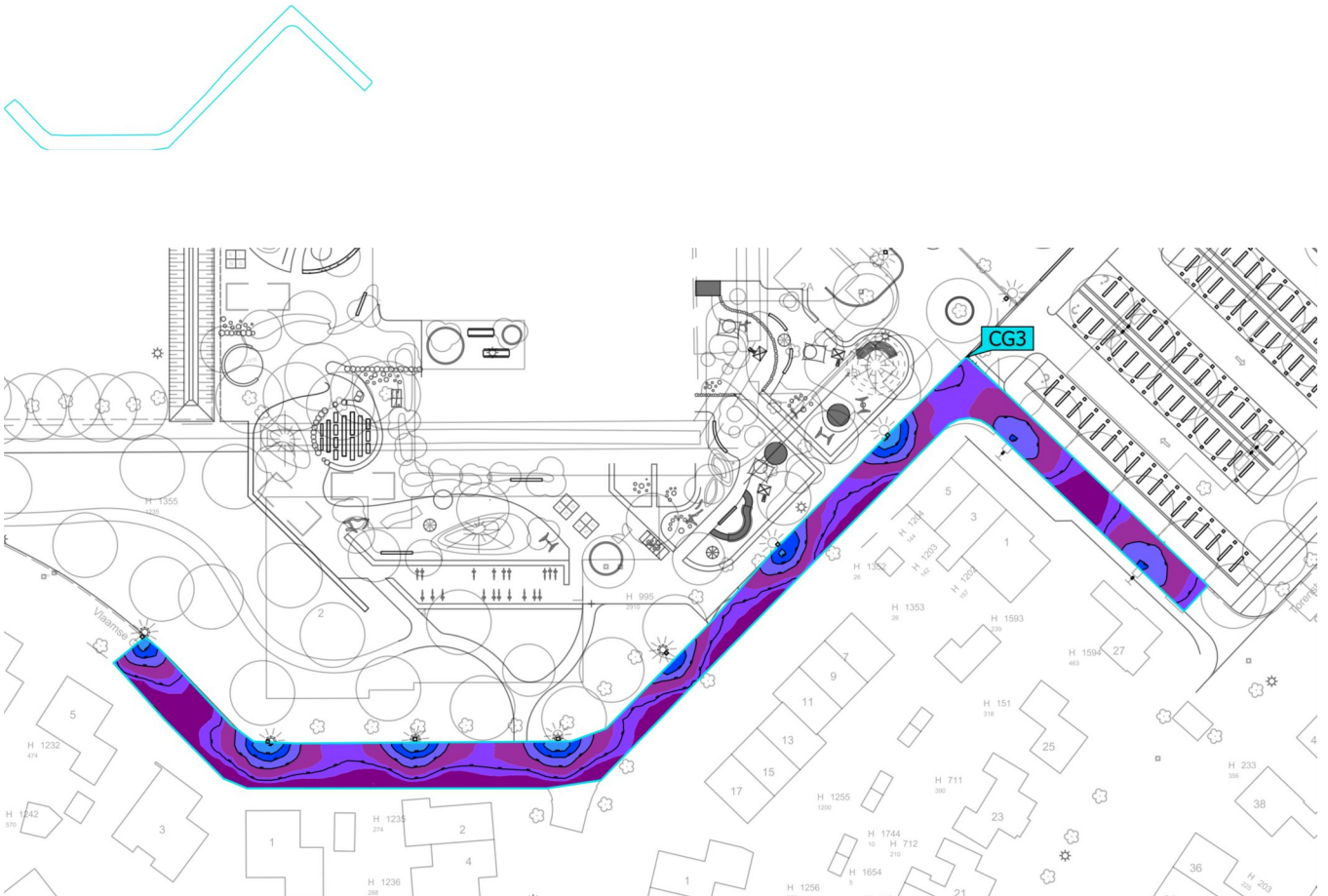
| Eigenschappen  | $\bar{E}$ | $E_{min}$ | $E_{max}$ | $U_o (g_1)$ | $g_2$ | Index |
|--|-----------|-----------|-----------|-------------|-------|-------|
| Parking<br>Loodrechte verlichtingssterkte<br>Hoogte: 0.000 m | 3.76 lx   | 1.02 lx   | 16.3 lx   | 0.27        | 0.063 | CG1   |

Kindcentrum OKP (Lichtscene 1)  
**Park**



| Eigenschappen   | $\bar{E}$ | $E_{min}$ | $E_{max}$ | $U_o (g_1)$ | $g_2$ | Index      |
|---|-----------|-----------|-----------|-------------|-------|------------|
| Park<br>Loodrechte verlichtingssterkte<br>Hoogte: 0.000 m | 3.85 lx   | 0.78 lx   | 14.0 lx   | 0.20        | 0.056 | <b>CG2</b> |

Kindcentrum OKP (Lichtscene 1)  
**Straat**



| Eigenschappen                  | $\bar{E}$ | $E_{min}$ | $E_{max}$ | $U_o (g_1)$ | $g_2$ | Index |
|--------------------------------|-----------|-----------|-----------|-------------|-------|-------|
| Straat                         | 3.62 lx   | 0.93 lx   | 13.0 lx   | 0.26        | 0.072 | CG3   |
| Loodrechte verlichtingssterkte |           |           |           |             |       |       |
| Hoogte: 0.000 m                |           |           |           |             |       |       |