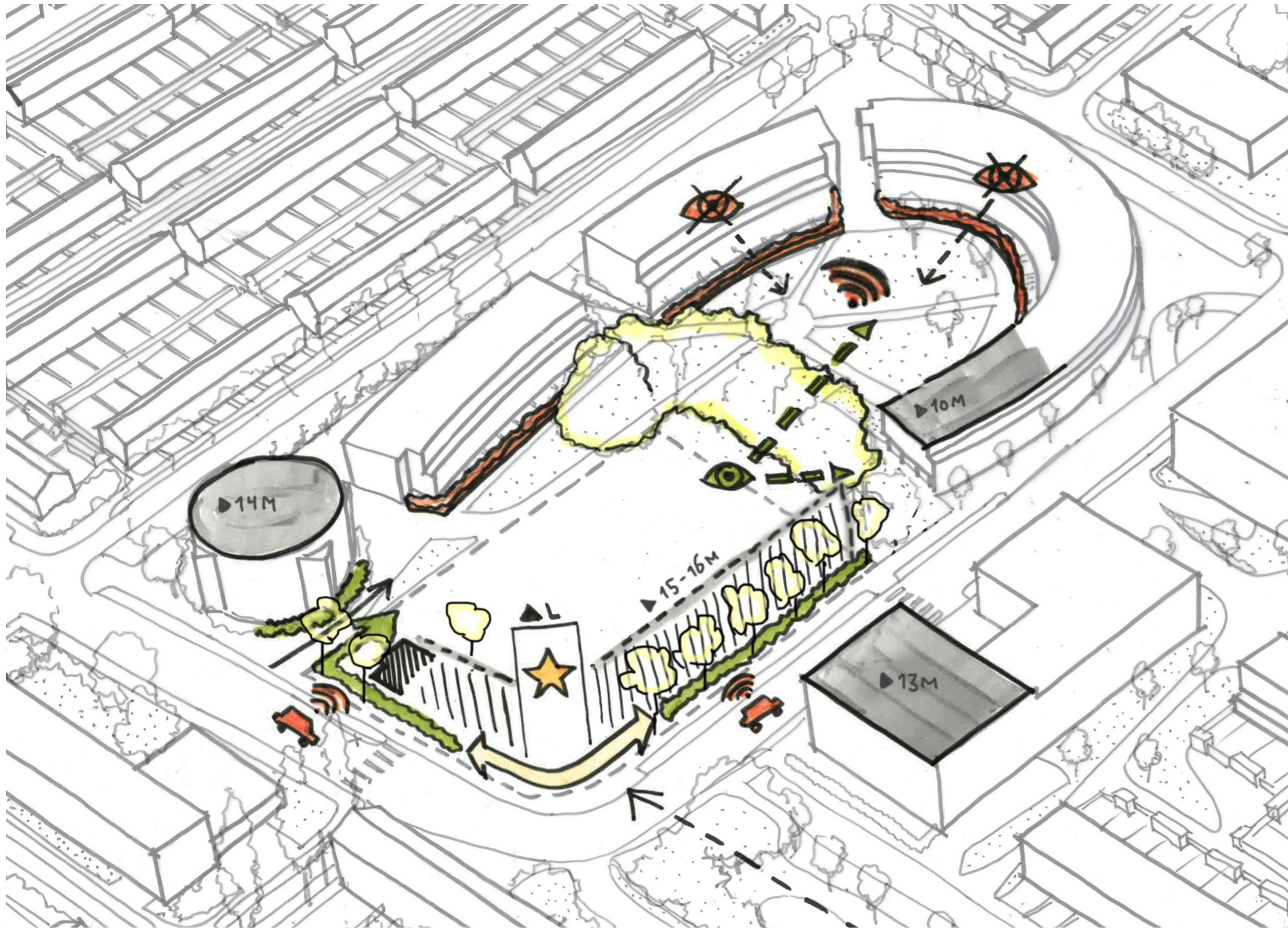


BEVINDINGEN PARTICIPATIERONDE 1



Bouwvolume

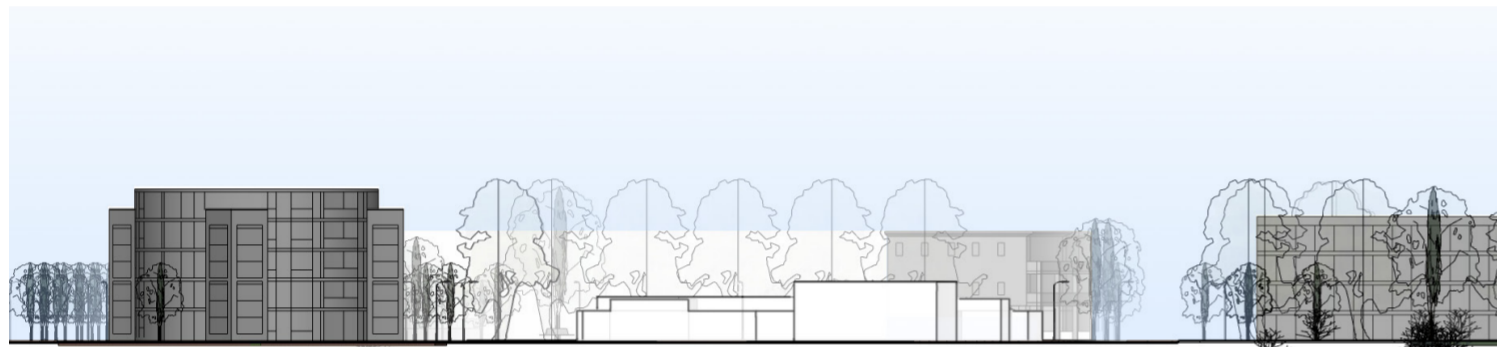
Medium variant (hoogte en bouwvlak gemiddeld)
 Hoogte accent op hoek Raadhuislaan en Einsteinlaan
 Bebouwing zoveel mogelijk naar professor Einsteinlaan

Parkeren

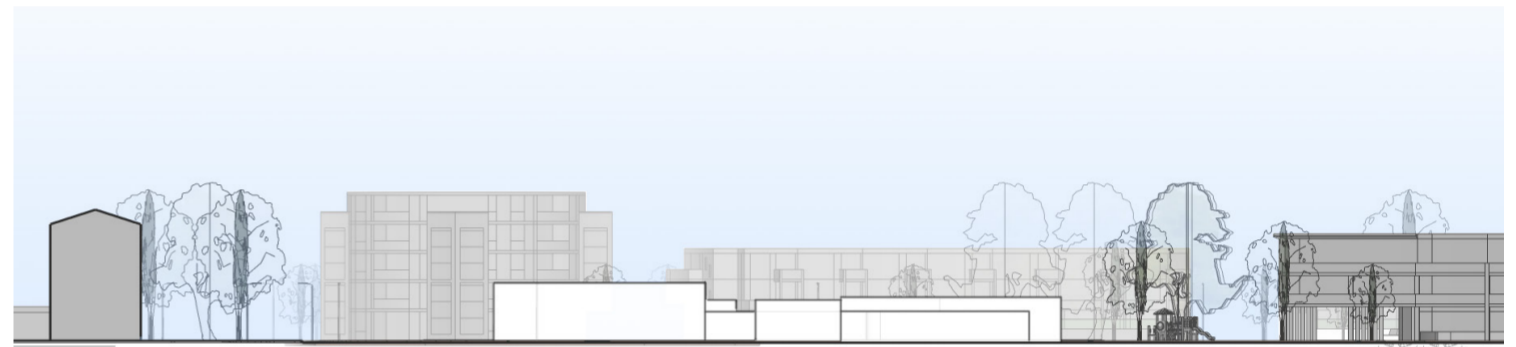
Oplossen op eigen terrein
 Weinig parkeerdruk op dit moment
 Gebruik parkeerplaatsen, omdat veel gepensioneerd is

Problemen

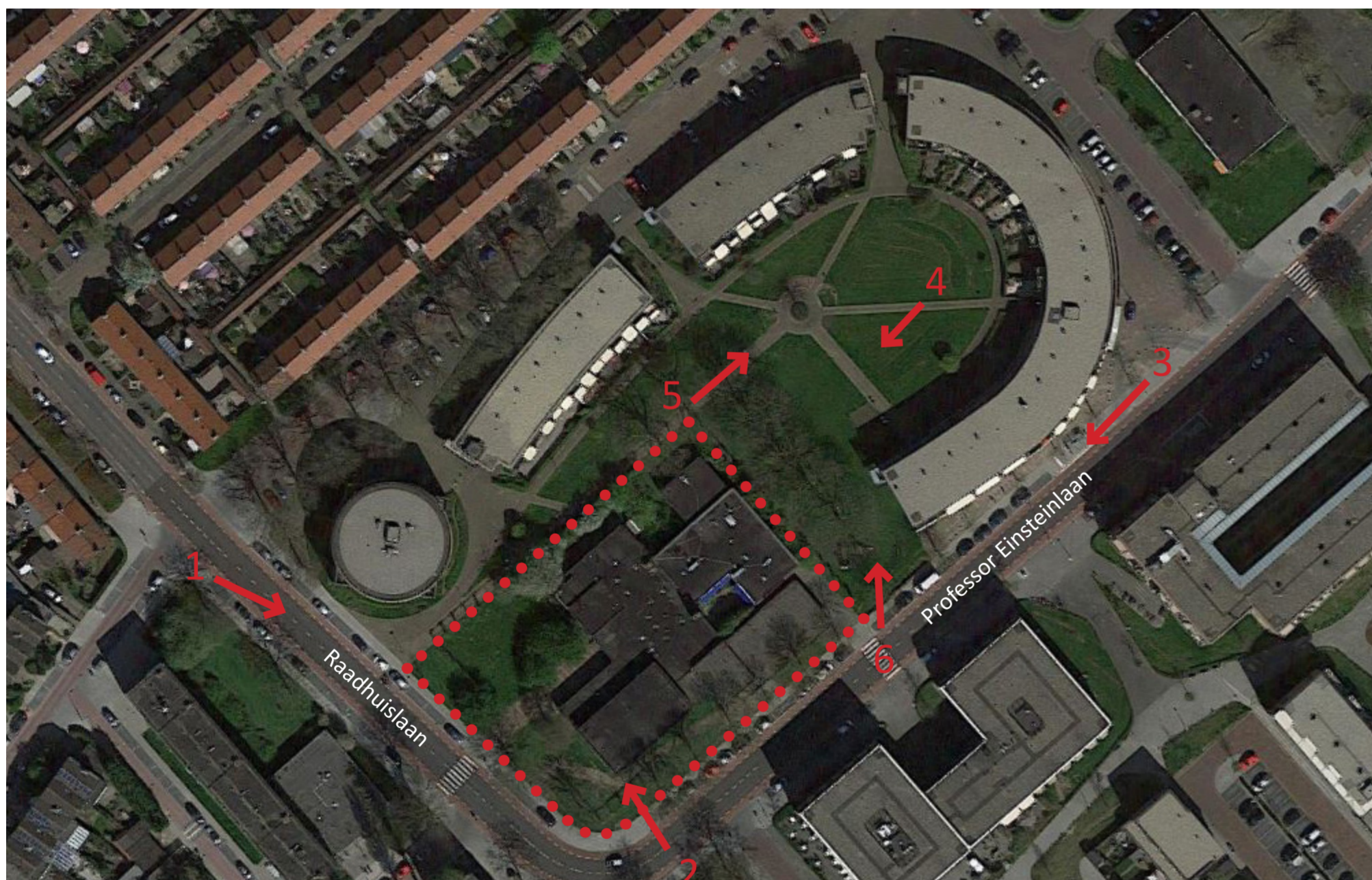
Plantsoen is een klankkast
 Geen extra overlast van auto's



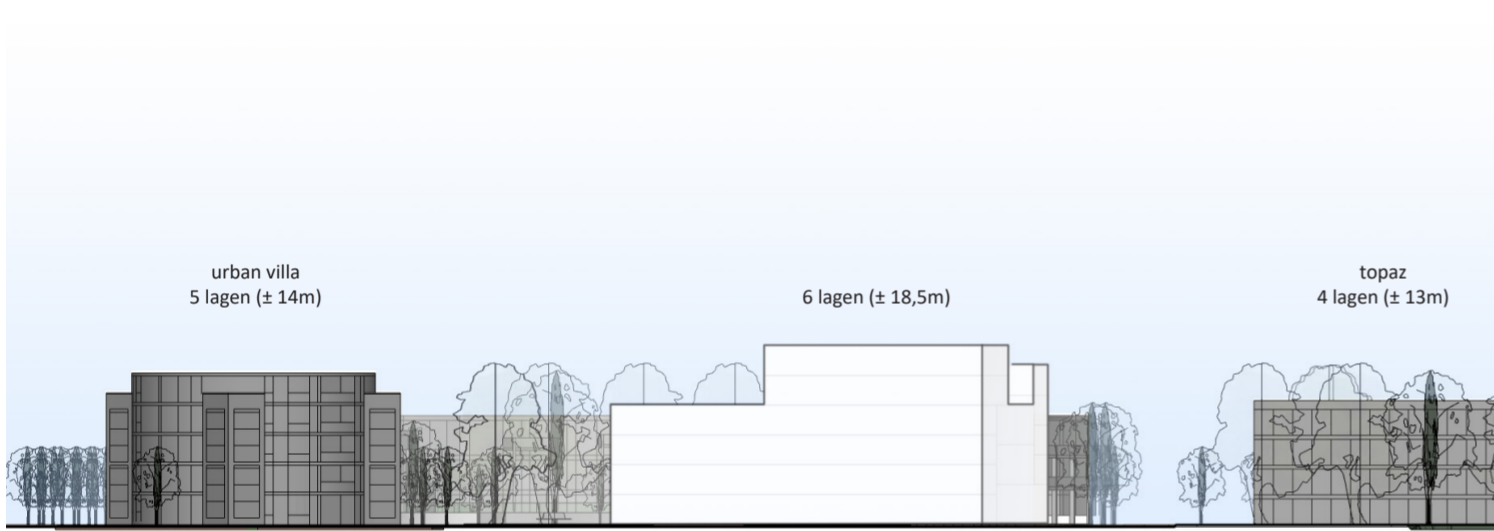
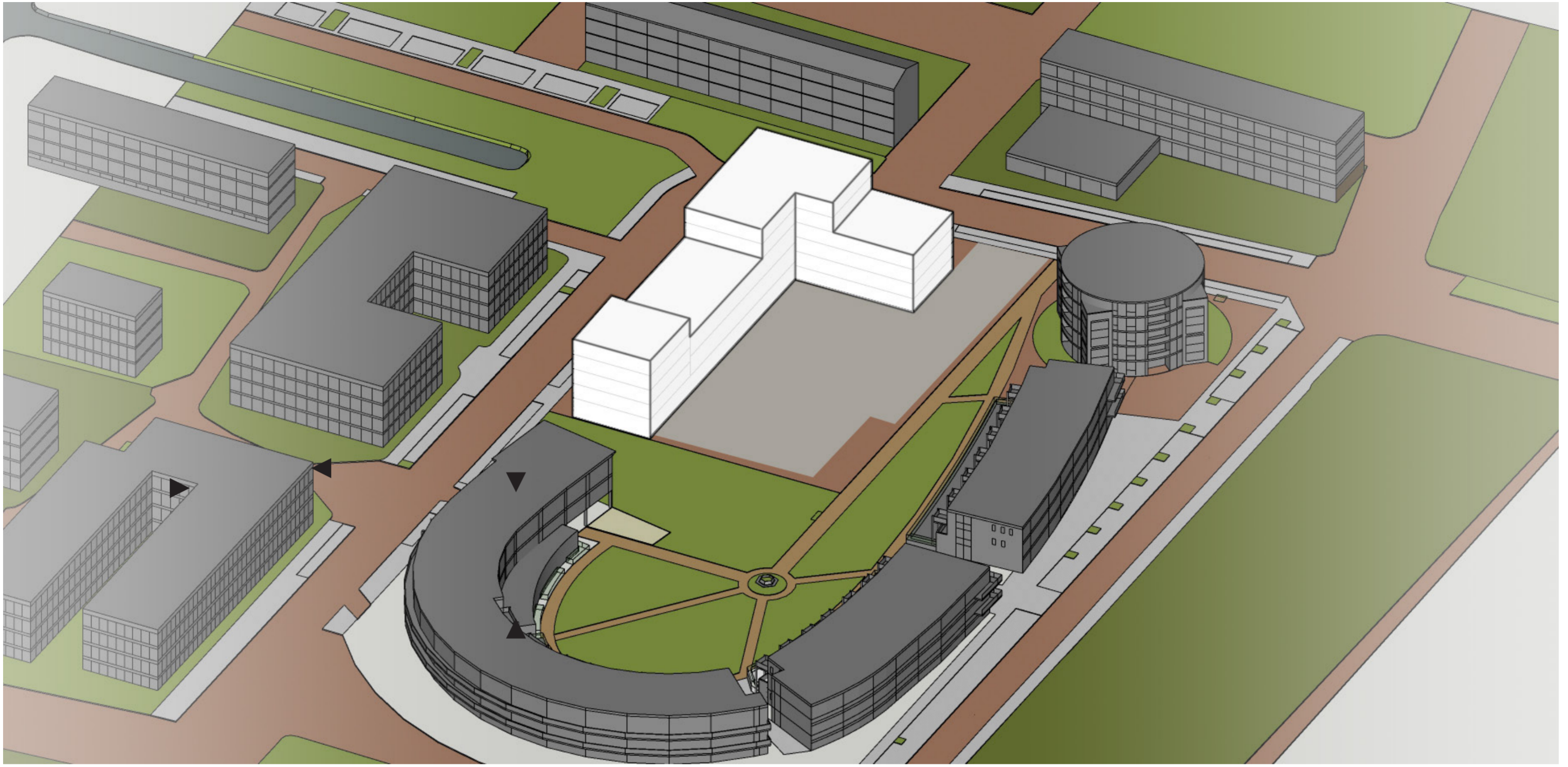
Raadhuislaan



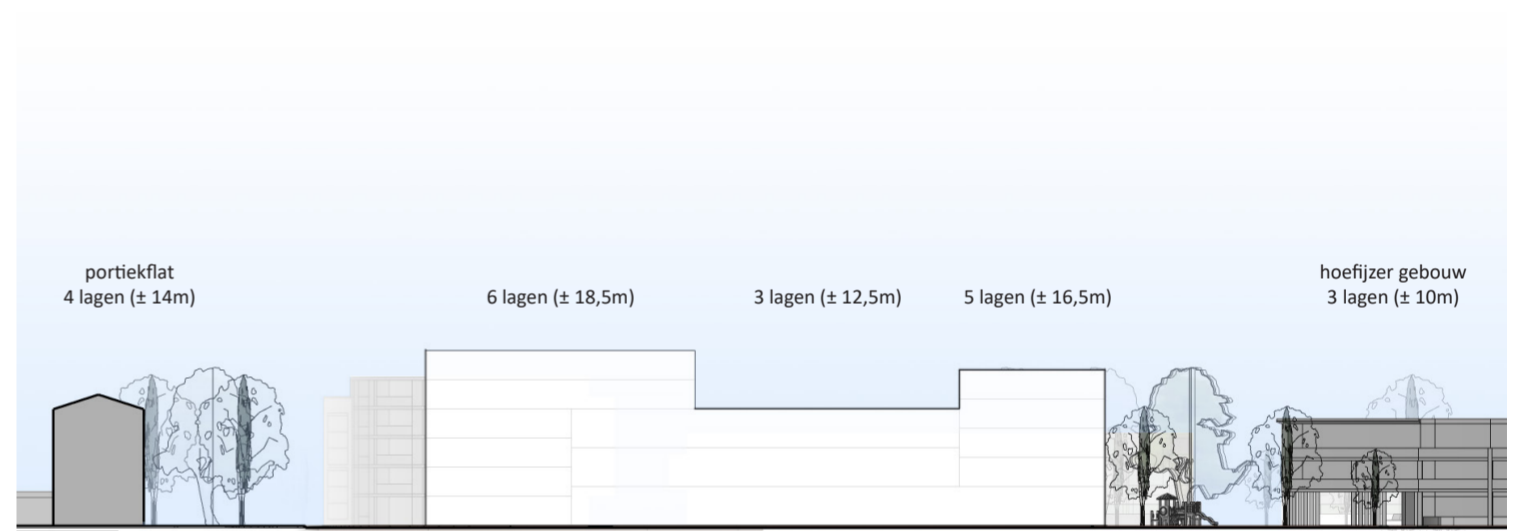
Professor Einsteinlaan



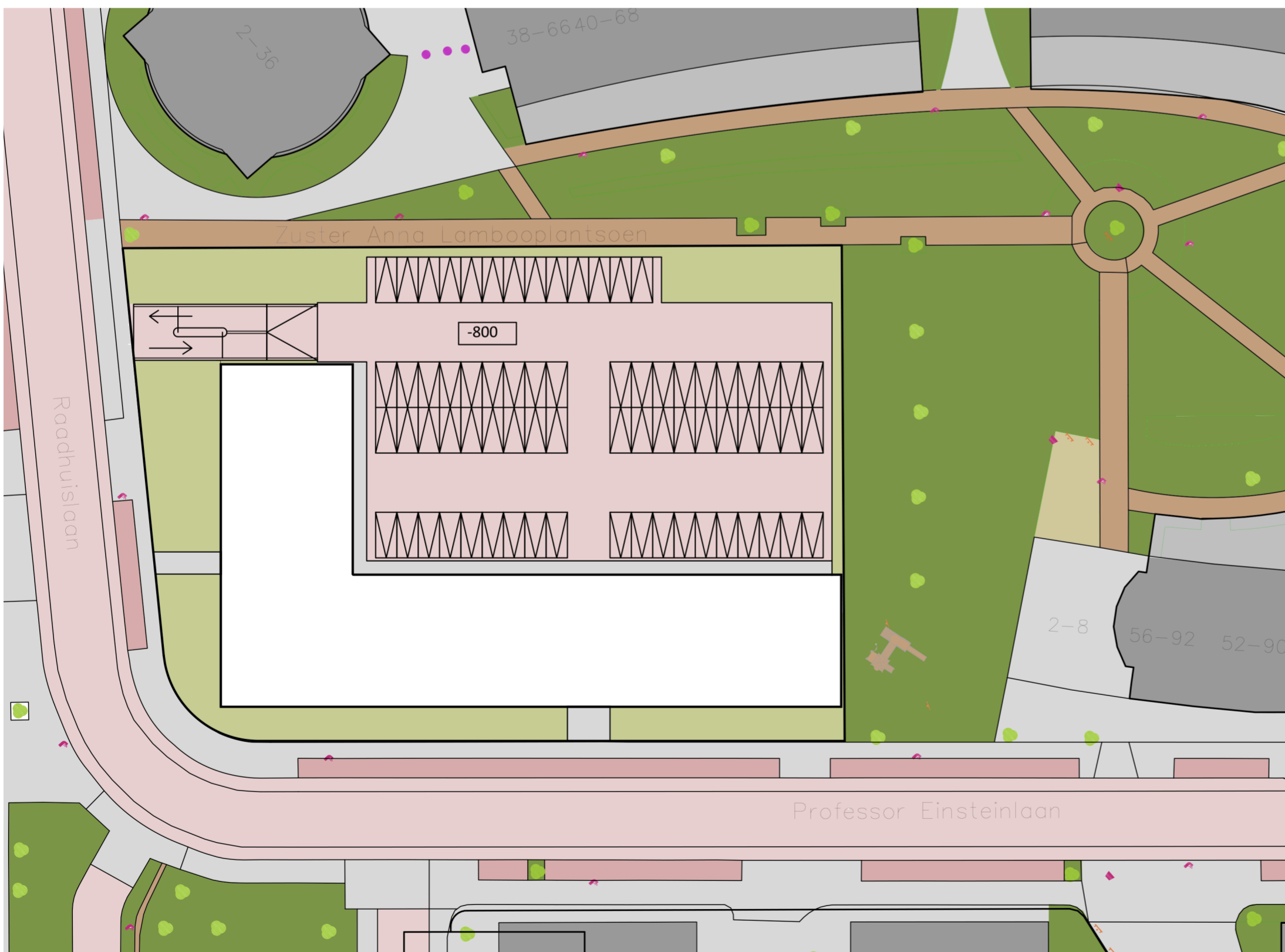
VARIANT A



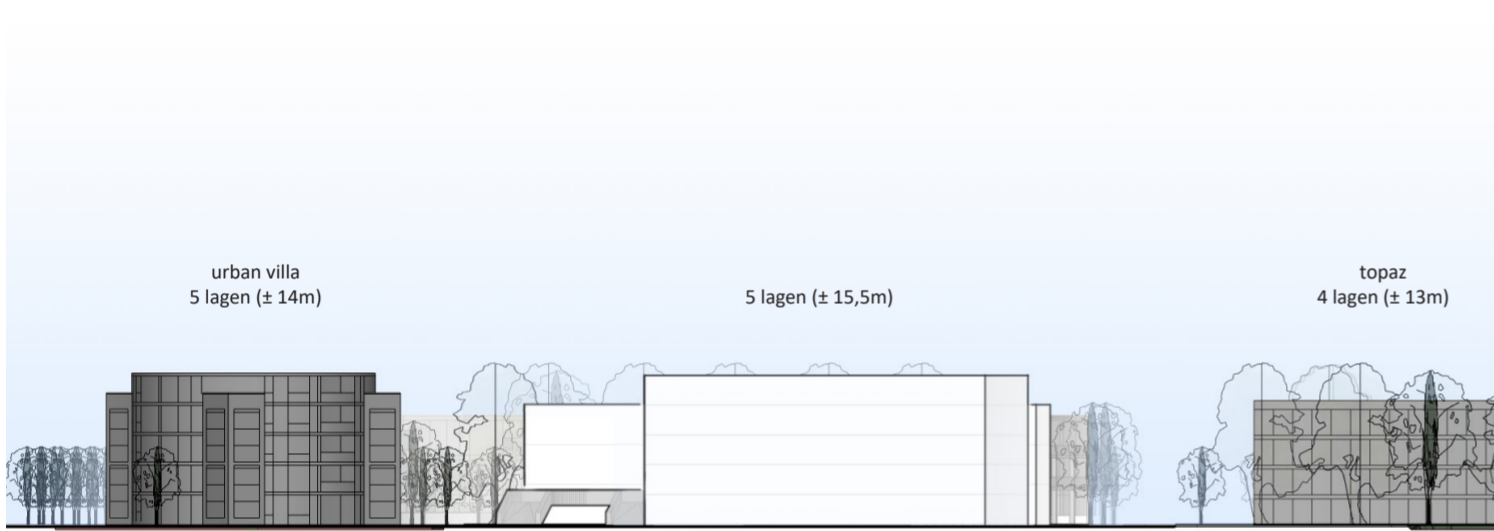
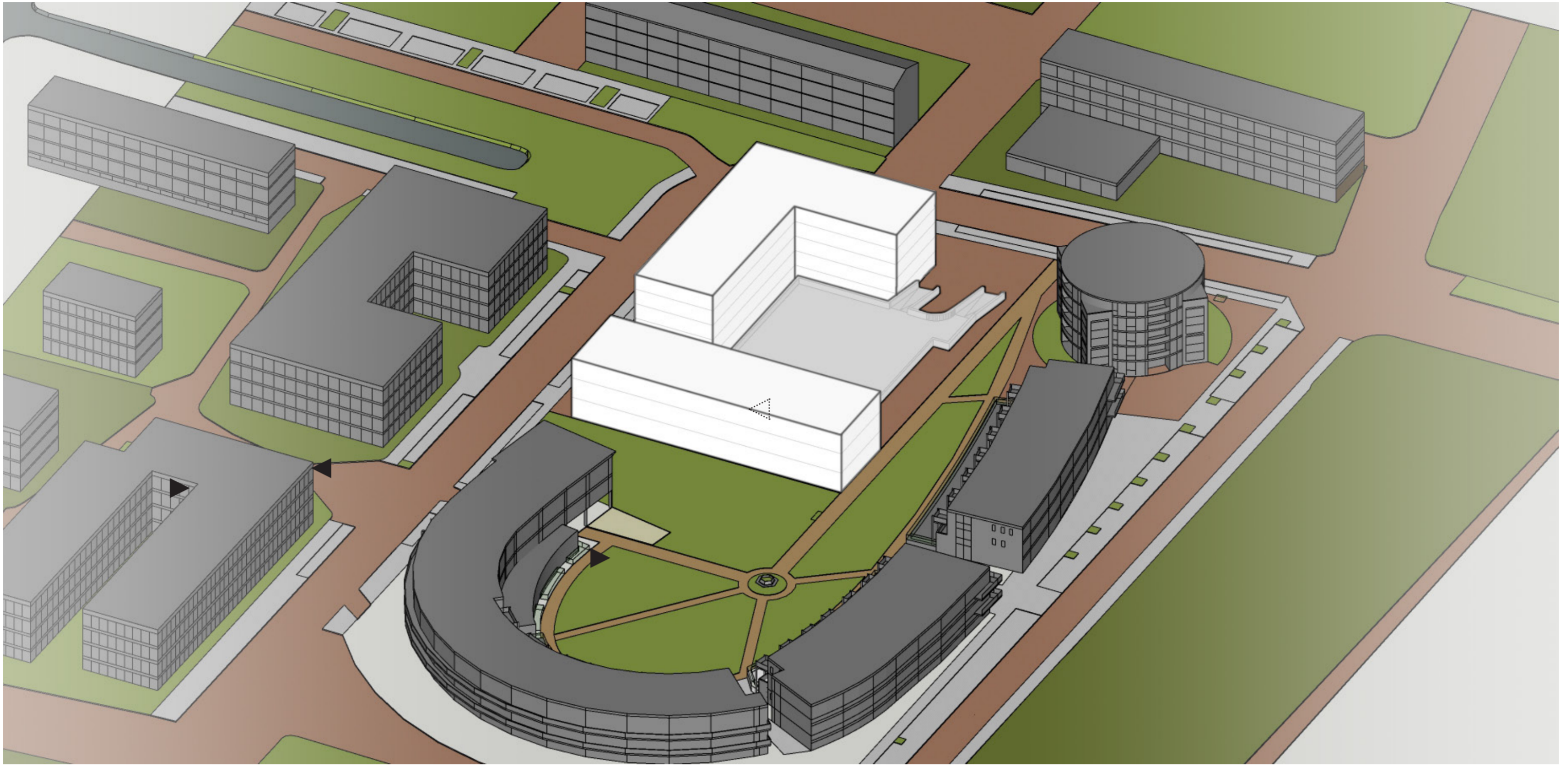
Raadhuislaan



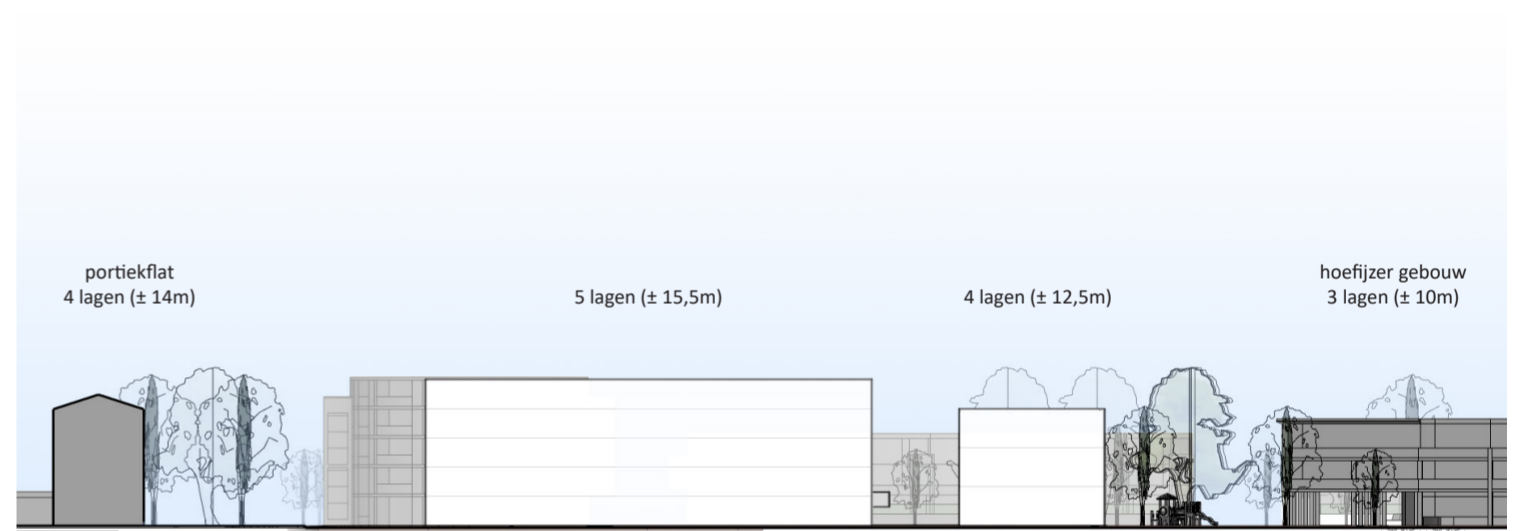
Professor Einsteinlaan



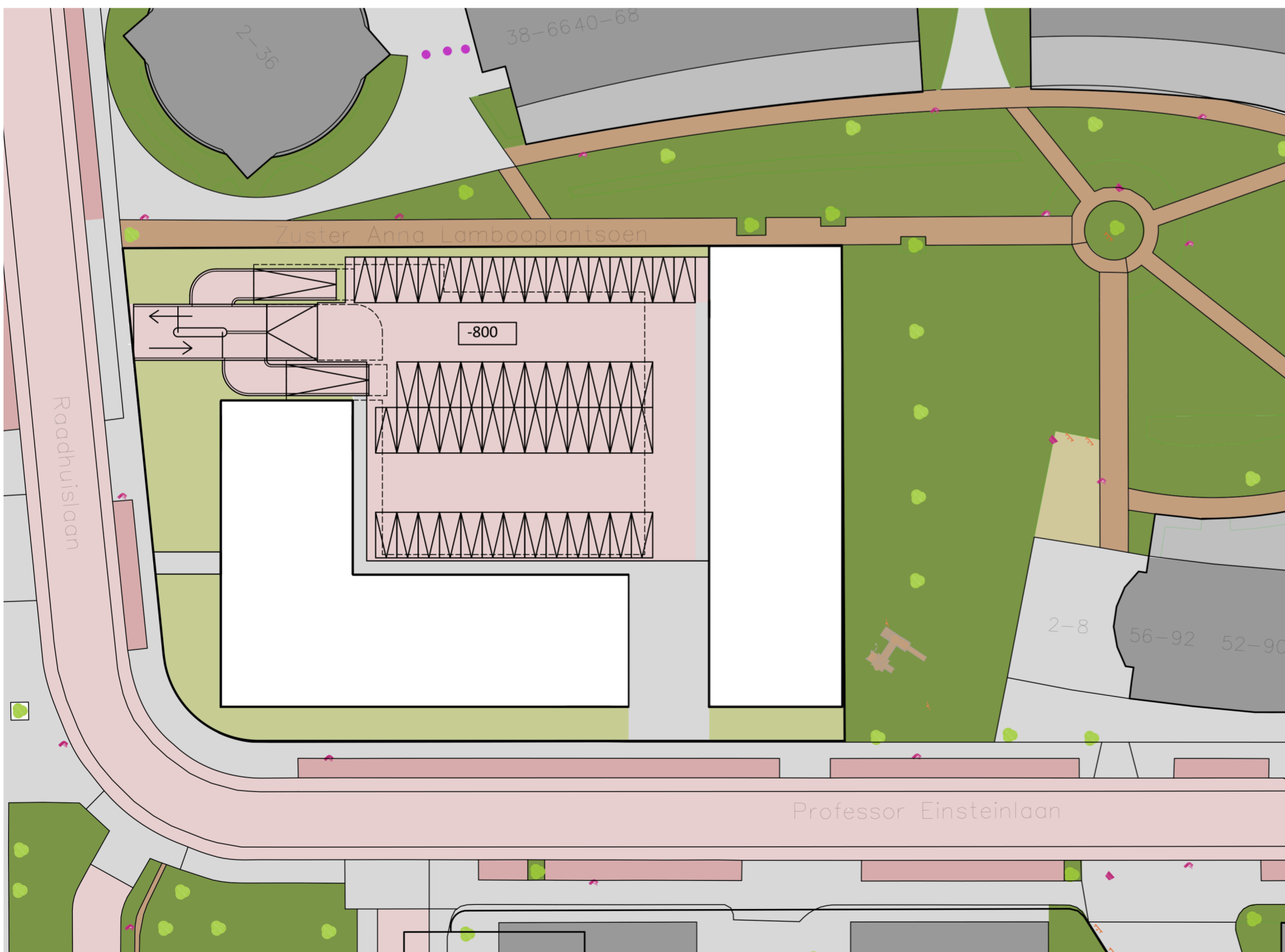
VARIANT B



Raadhuislaan

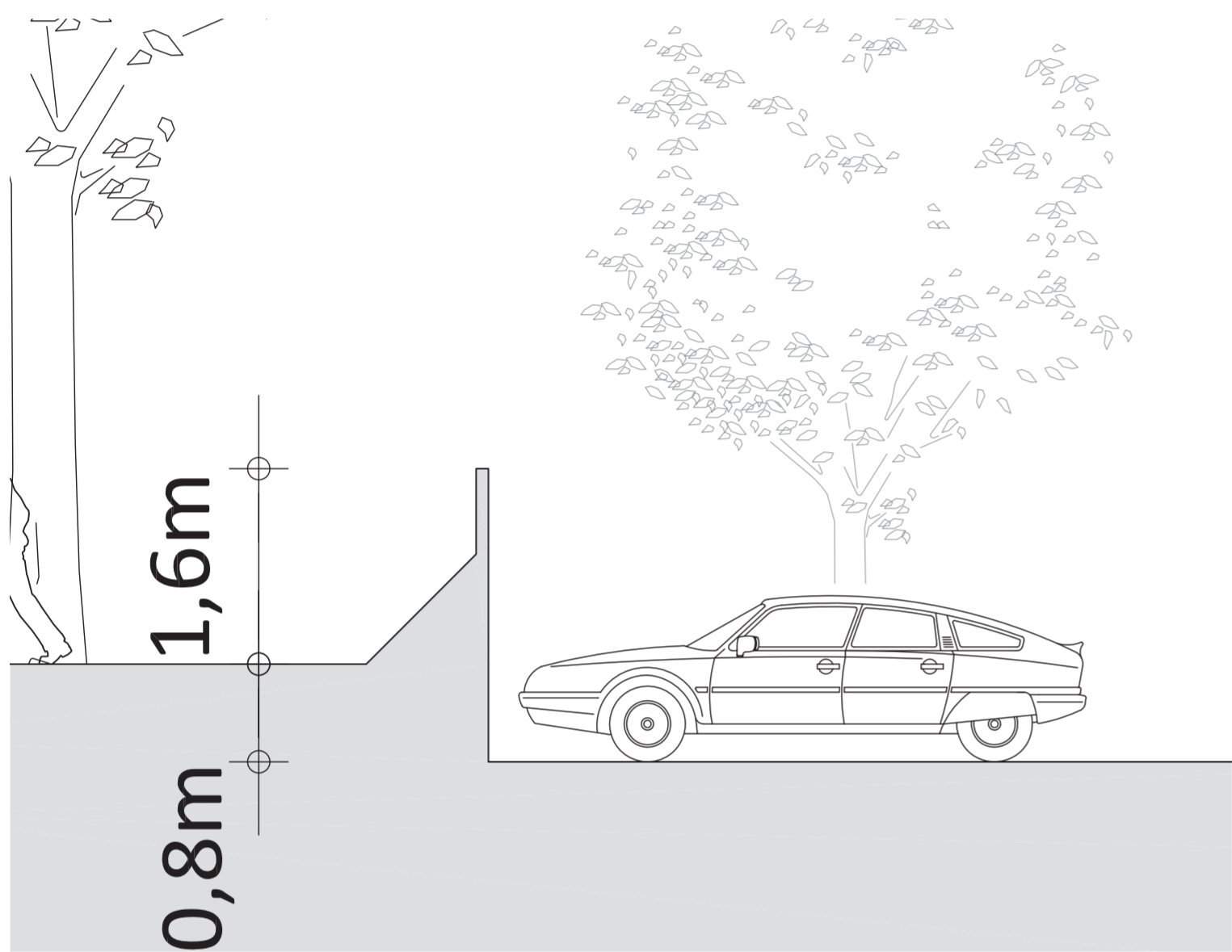
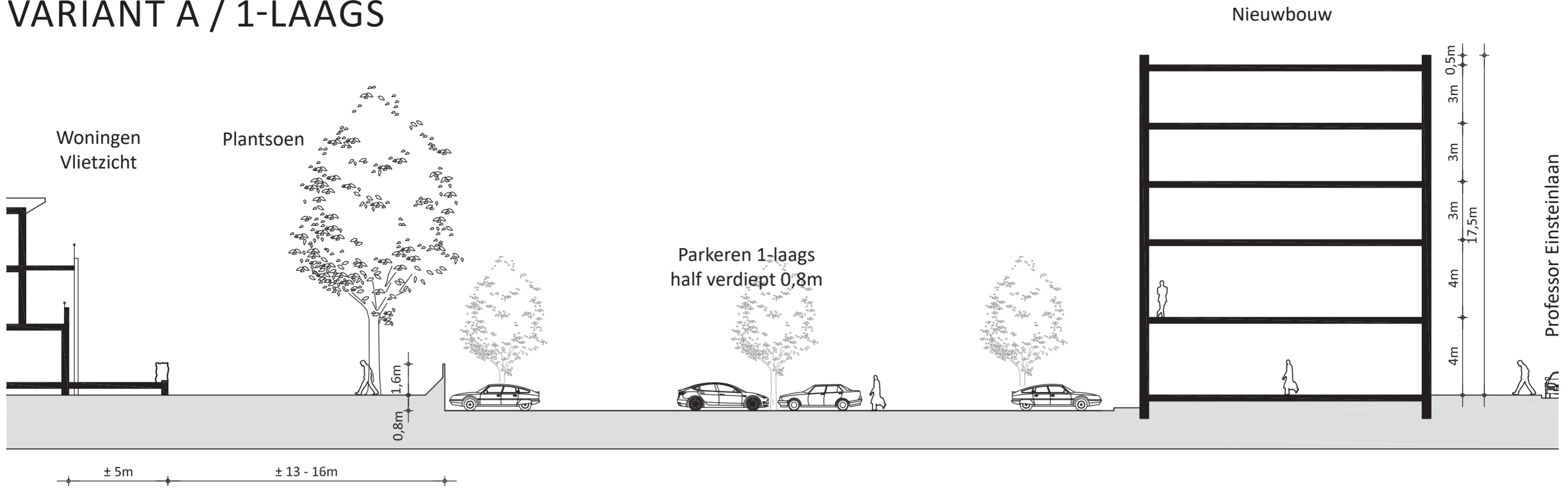


Professor Einsteinlaan

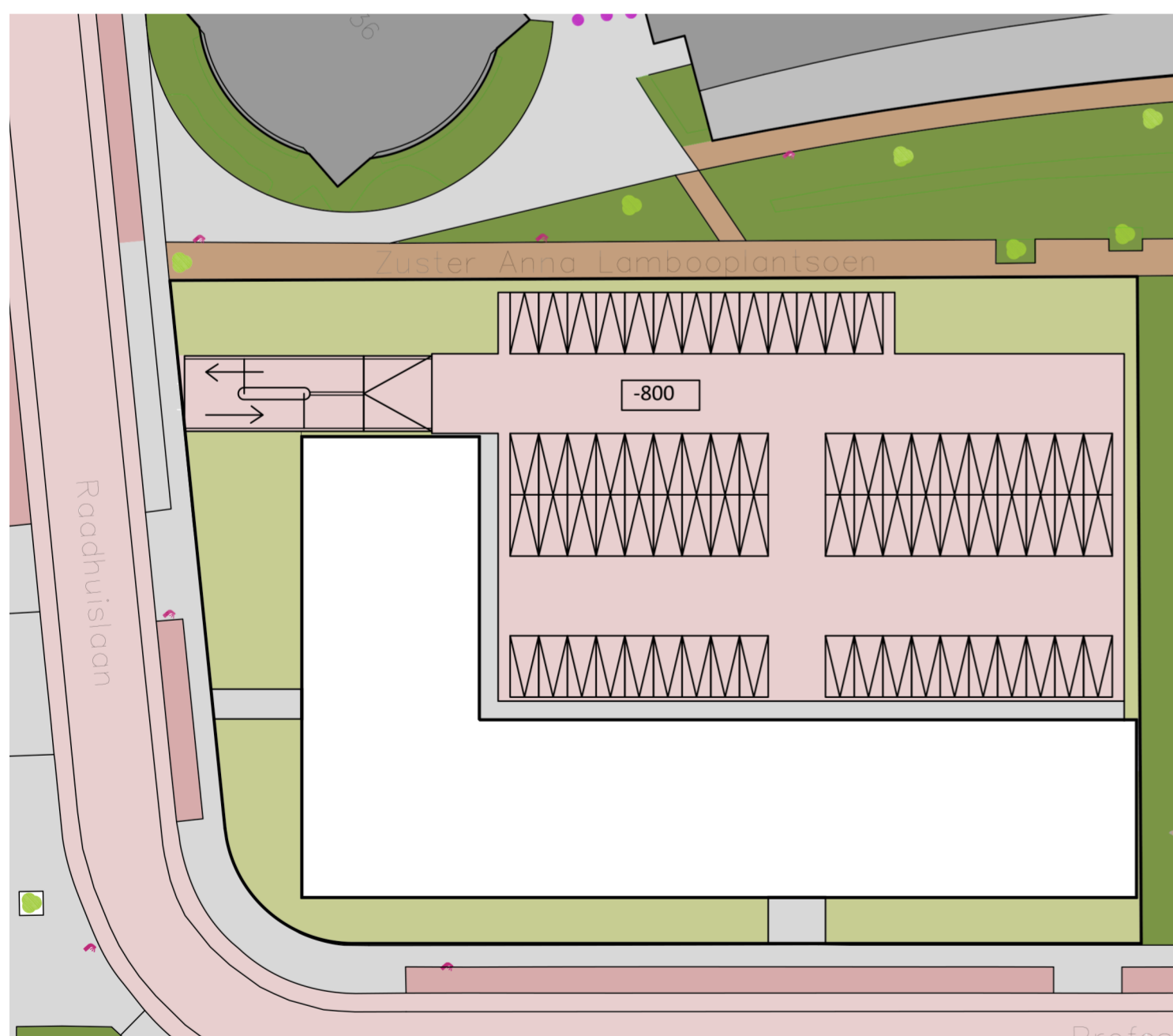


PARKEREN

VARIANT A / 1-LAAGS



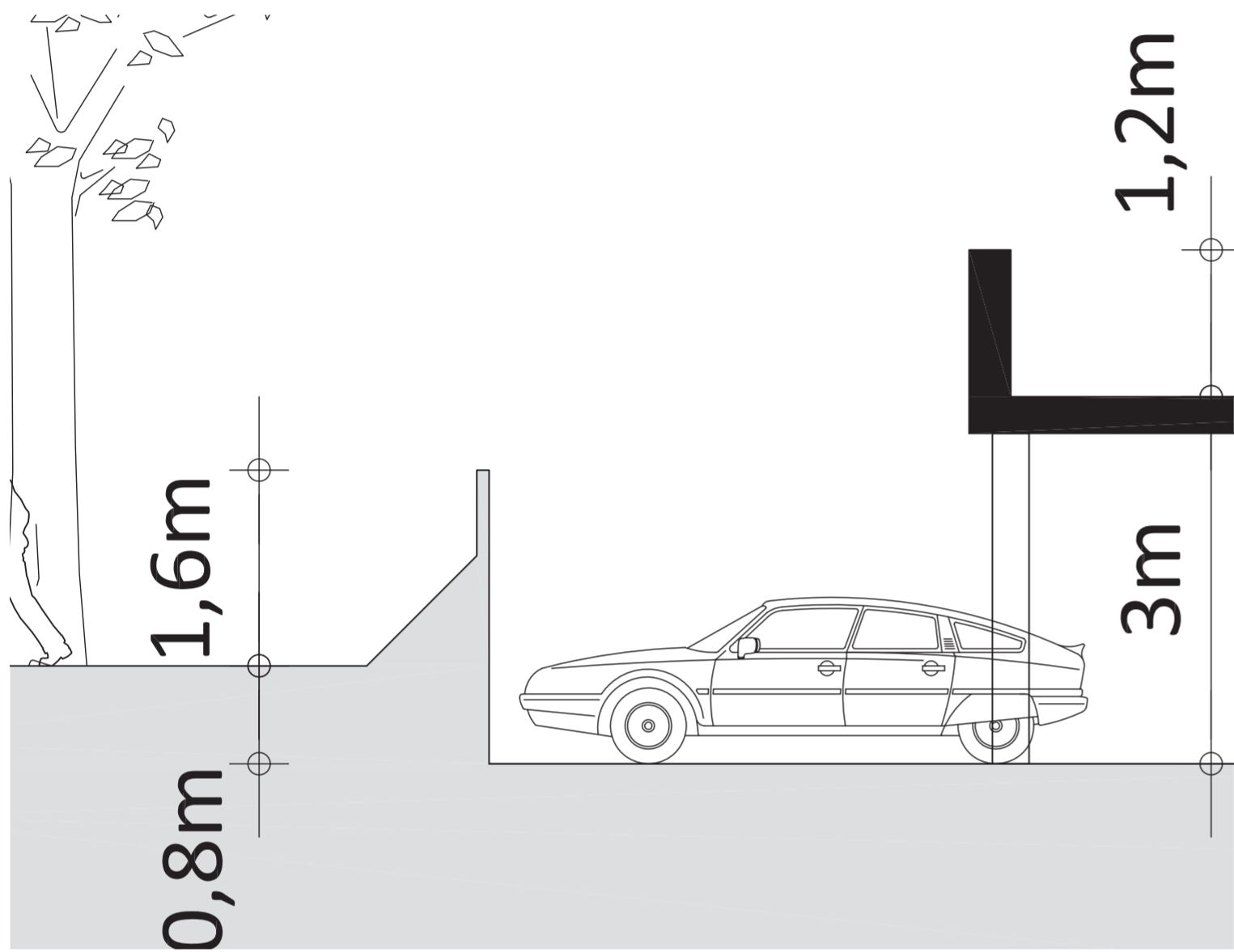
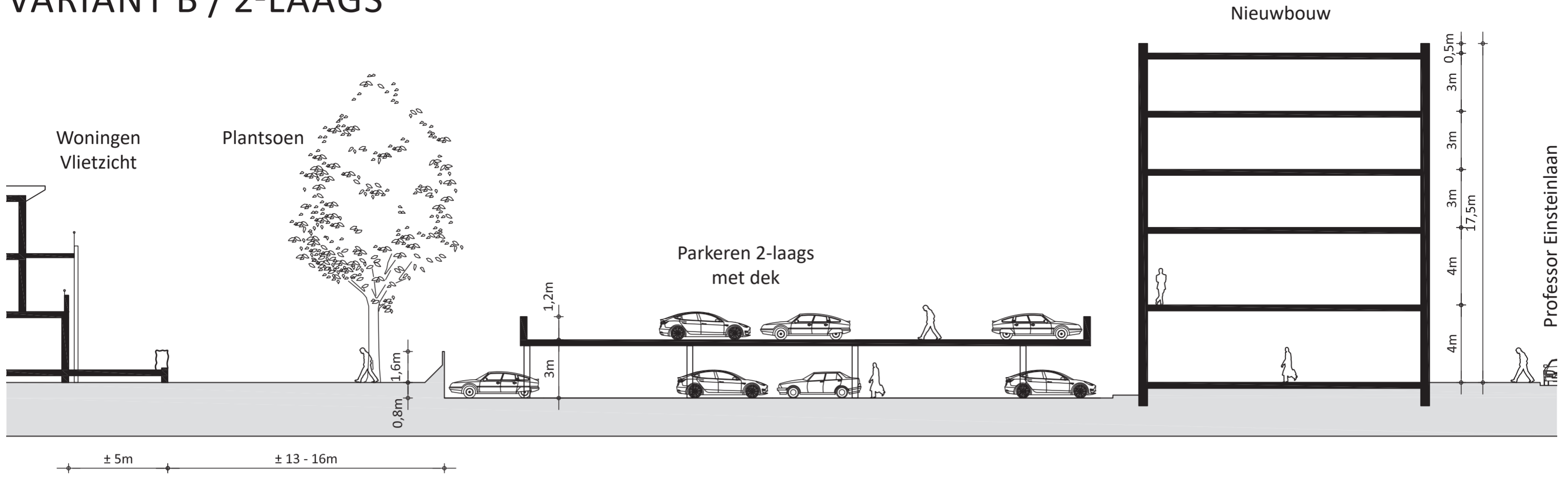
Doorsnede ingezoomd



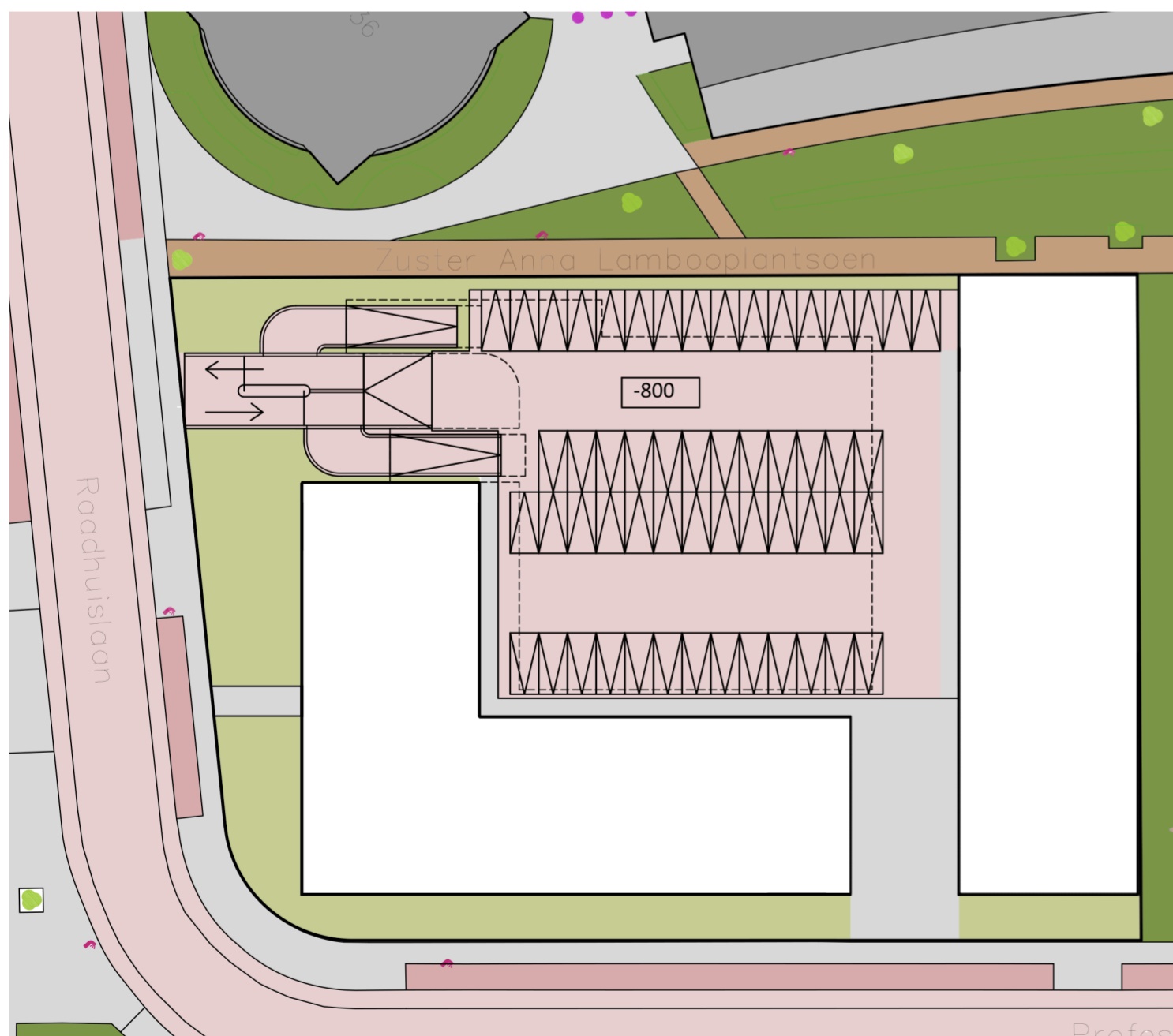
Parkeren maaiveld half verdiept (-0,8m)

PARKEREN

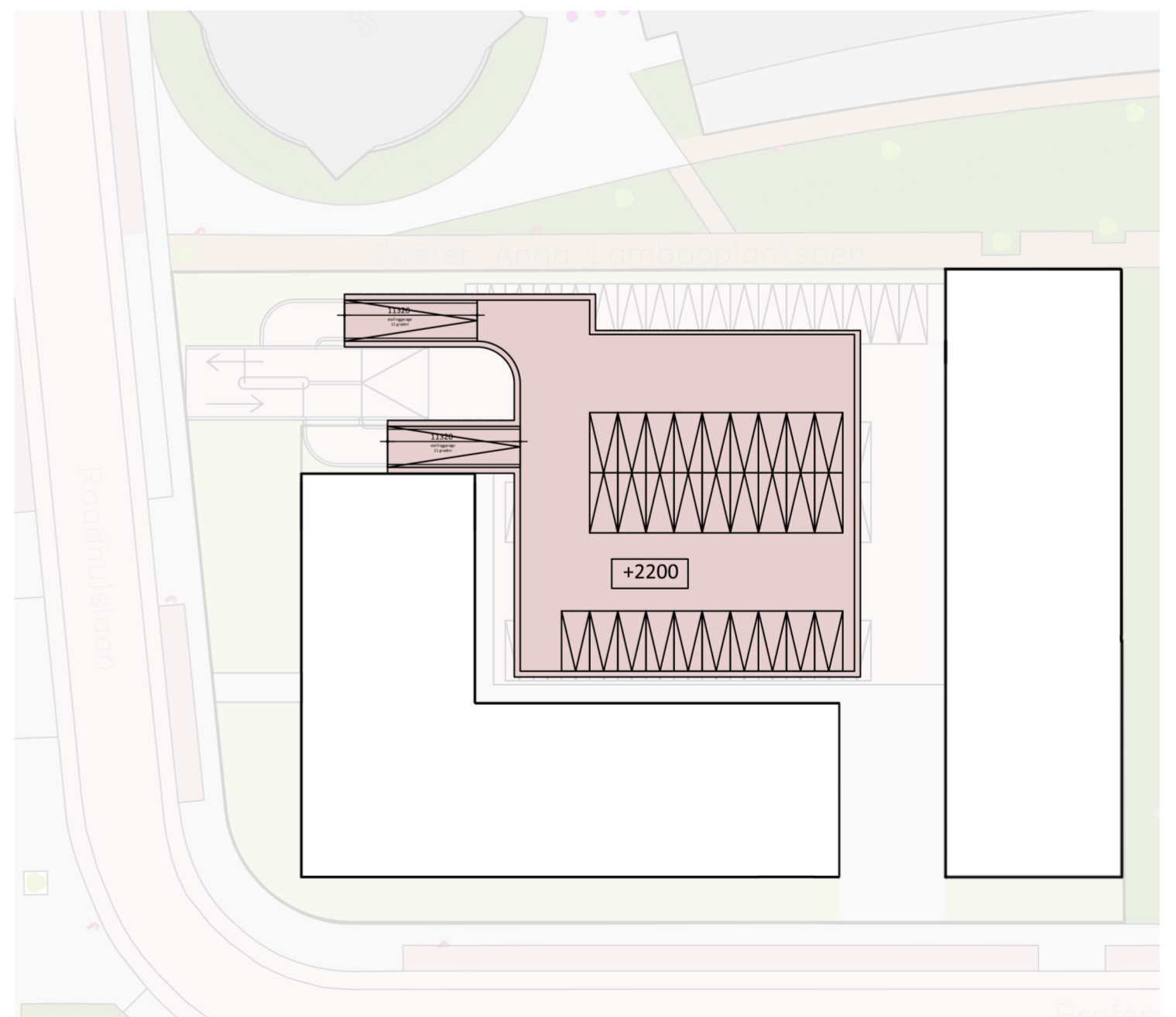
VARIANT B / 2-LAAGS



Doorsnede ingezoomd



Parkeren maaiveld half verdiept (-0,8m)



Parkeren dek verdiepig (+2,2m)

PROCES

