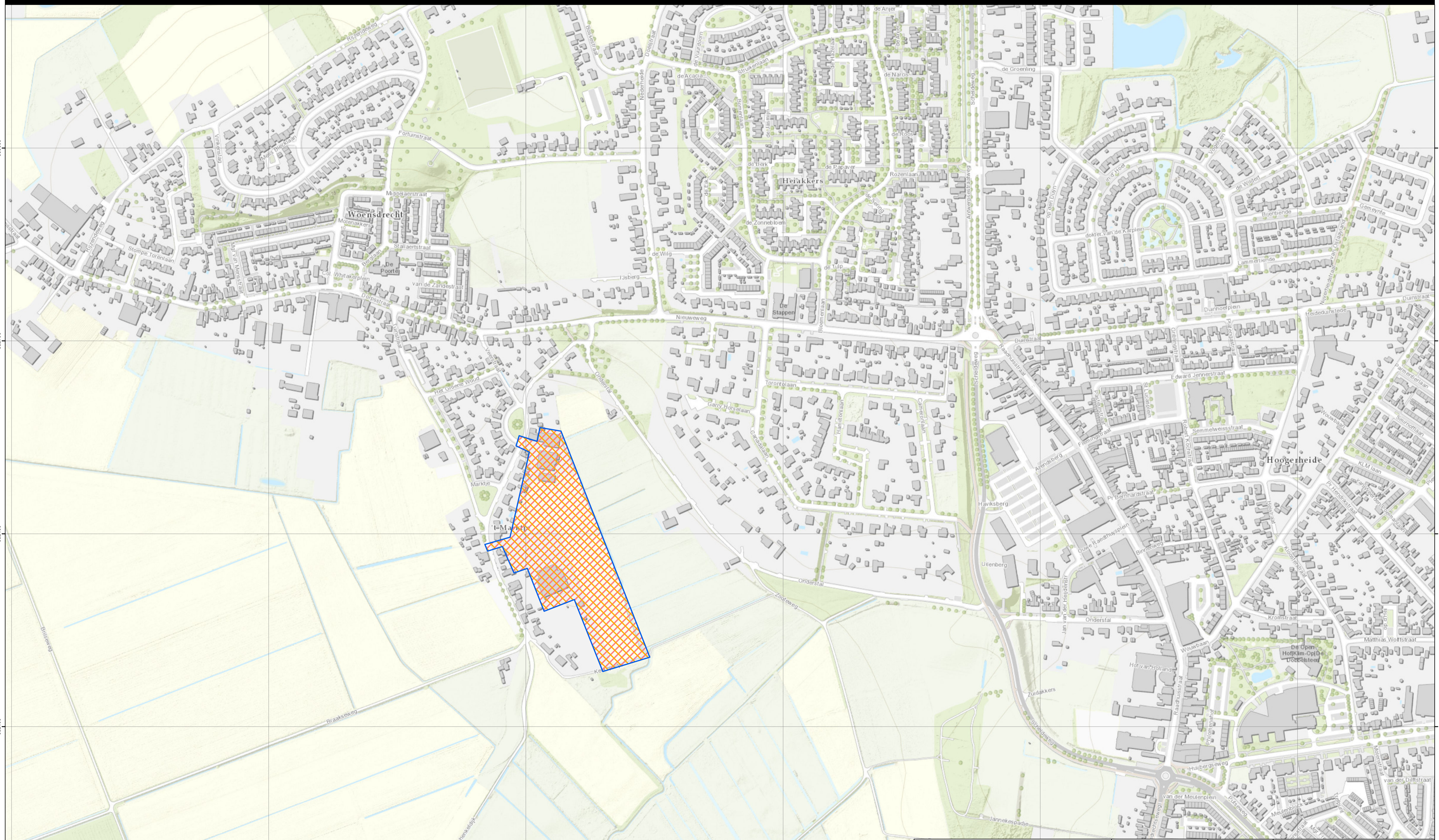



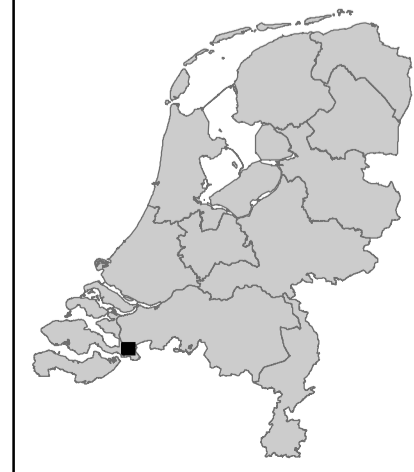



# CE-Bodembelastingkaart - VO 't Marktje Woensdrecht



<b>Legenda</b>  Verdacht op geschuttmunitie  Verdacht op diverse hoofdsorten CE  Onderzoekgebied	Projectnaam: VO 't Marktje Woensdrecht Projectnummer: 20P249 versie 1.0 Onderwerp: CE-Bodembelastingkaart Opdrachtgever: AVV Beheer B.V. Tekenaar: Jesse Gruijters	 Datum: 8-1-2021 	
	Controleur: Thierry van den Berg		Bombs Away B.V. Maliebaan 74 Postbus 1148 3581 CV Utrecht www.bombsaway.nl info@bombsaway.nl
	Scale: 0 45 90 180 meter 