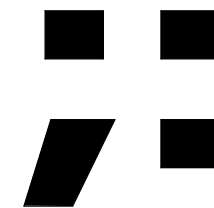


L K S V D D a r c h i t e c t e n

inhoudsopgave DO-D01 principe details			
bladnr.	onderwerp	status	datum
01	Detailaanduiding	CONCEPT	22-07-2022
02	Detailaanduiding	CONCEPT	22-07-2022
03	Materialisatie	CONCEPT	22-07-2022
04	detail 01	CONCEPT	22-07-2022
05	detail 02	CONCEPT	22-07-2022
06	detail 03	CONCEPT	22-07-2022
07	detail 04	CONCEPT	22-07-2022
08	detail 05	CONCEPT	22-07-2022
09	detail 06	CONCEPT	22-07-2022
10	detail 07	CONCEPT	22-07-2022
11	detail 08	CONCEPT	22-07-2022
12	detail 09	CONCEPT	22-07-2022
13	detail 10	CONCEPT	22-07-2022
14	detail 11	CONCEPT	22-07-2022
15	detail 12	CONCEPT	22-07-2022
16	detail 13	CONCEPT	22-07-2022
17	detail 14	CONCEPT	22-07-2022
18	detail 15	CONCEPT	22-07-2022
19	detail 16	CONCEPT	22-07-2022
20	detail 17	CONCEPT	22-07-2022
21	detail 18	CONCEPT	22-07-2022
22	detail 19	CONCEPT	22-07-2022

definitief ontwerp / CONCEPT / DO-D01

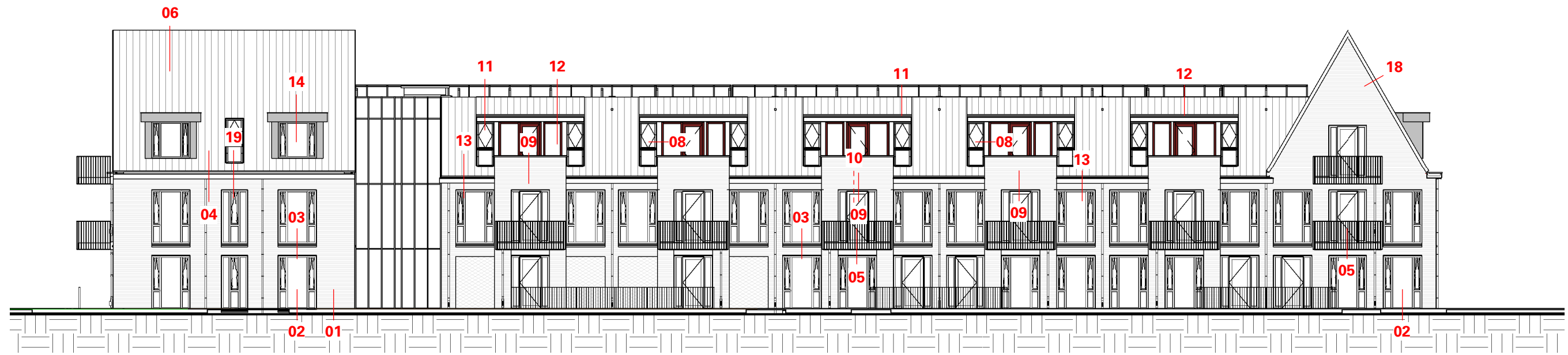


project **G19418**
Nieuwbouw sociale huurwoningen De Meente
Genemuiden

opdrachtgever **Wetland Wonen Groep**
Postbus 18, 8325ZG **Vollenhove**

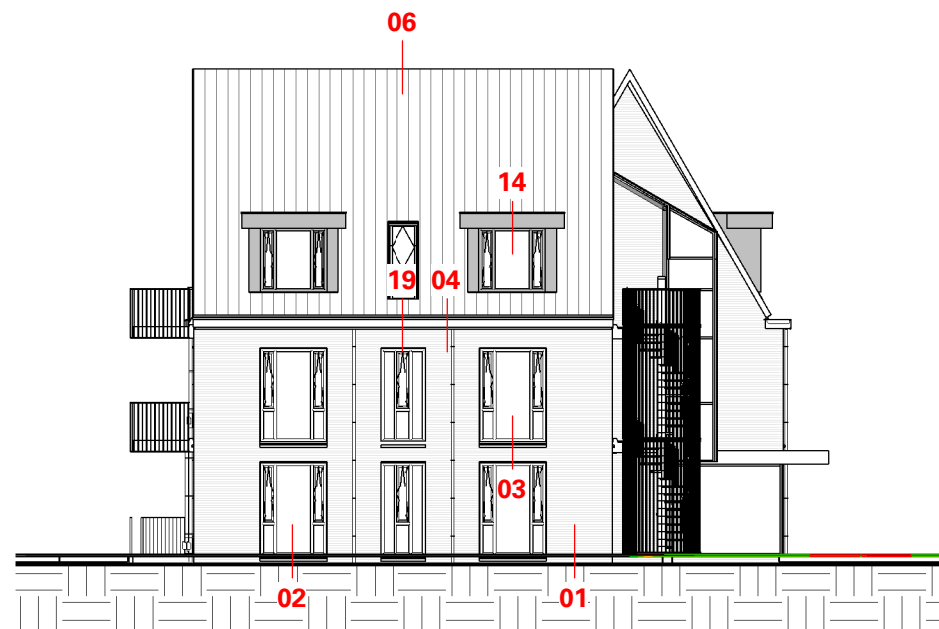
onderwerp **Principe details**

datum 22-07-2022
gewijzigd
schaal 1:10
afmeting A3 - 420x297
getekend Martijn ter Huerne - Abdulkadir Tolun
bestand Autodesk Docs://Nieuwbouw sociale huurwoningen De Meente/G19418-DO_R22.rvt



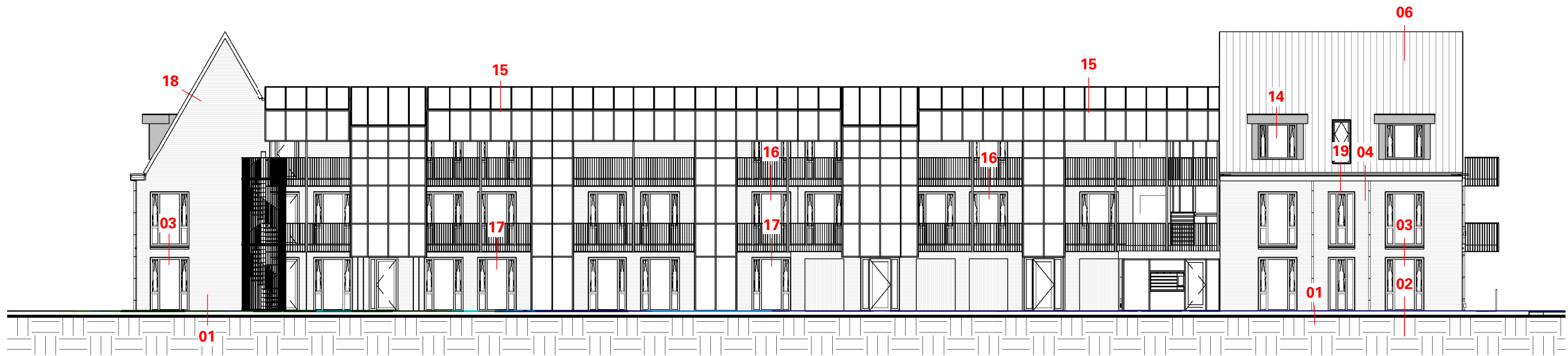
Voorgevel plaatsaanduiding

1 : 200



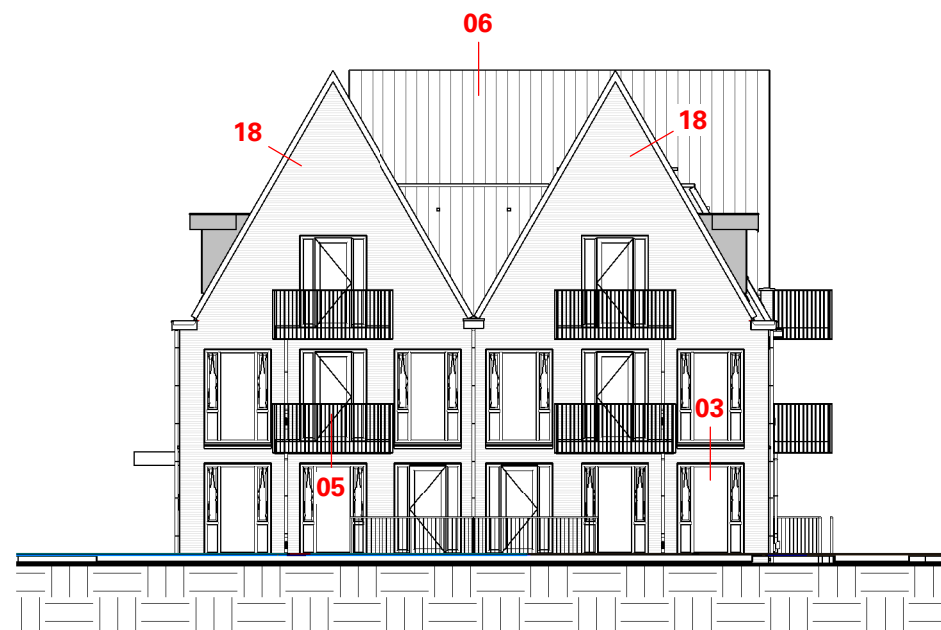
Rechtergevel plaatsaanduiding

1 : 200



Achtergevel plaatsaanduiding

1 : 200



Linkergevel plaatsaanduiding

1 : 200



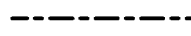

THERMISCHE SCHIL

- Plat dak $R_c = \text{gem. } 7,54 \text{ m}^2 \cdot \text{K/W}$
- Hellend dak $R_c = 7,0 \text{ m}^2 \cdot \text{K/W}$
- Plat dak dakkapel $R_c = 6,65 \text{ m}^2 \cdot \text{K/W}$
- Wand dakkapel $R_c = 4,83 \text{ m}^2 \cdot \text{K/W}$
- Bg. vloer $R_c = 3,7 \text{ m}^2 \cdot \text{K/W}$
- Gevel $R_c = 5,32 \text{ m}^2 \cdot \text{K/W}$
- Isolerende deur (Glas/deur) $U_{\text{deur}} = 1,45 \text{ W/m}^2 \cdot \text{k}$
- Raam $U_{\text{raam}} = 1,45 \text{ W/m}^2 \cdot \text{k}$
- Luchtdichtheid $Q_v;10;kar = 0,42 \text{ dm}^3/\text{s/m}^2$

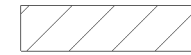
WANDOPBOUW BUITENSCHIL

- 175mm kalkzandsteen
- 142mm Mupan Ultra XS
- 38mm luchtpouw
- 100mm schoonmetselwerk, halfsteensverband, lagenmaat 60mm

FOLIES

-  waterwerende dampdoorlatende laag
-  dampremmende laag
-  waterkerende laag
-  luchtdicht membraan

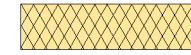
RENVOOI



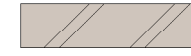
kalkzandsteen vuilmetselwerk



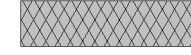
kalkzandsteen



minerale wol



schoonmetselwerk halfsteenverband



cellenbeton (koude brugonderbreking)



PIR isolatie

