

SECTION TAPERED PANELS: (RHINOXX : 1000 X 600) RHINOXX AFSCHOT 1%

1001	40 - 50	78
1002	50 - 60	78
1003	60 - 70	73
1007	100 - 110	78
1008	110 - 120	78
1009	120 - 130	78
1010	130 - 140	78
1011	140 - 150	78
1012	150 - 160	78

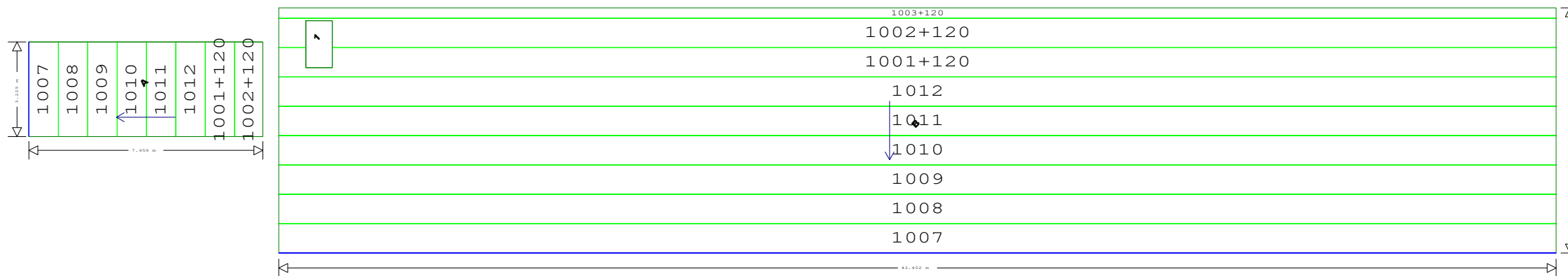
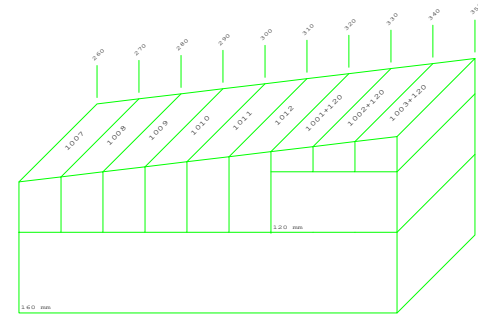
Total Sqr Metres = 387.28
Average R-Value = 7.54

SECTION FILL PANELS: (2000 X 600) RHINOXX

120	90
-----	----

BASE LAYER: (2000 X 600) RHINOXX

160	323
-----	-----



ROCKWOOL			
	Code	mm/min	mm/max
1.00%	1001	40	50
	1002	50	60
	1003	60	70
	1004	70	80
	1005	80	90
	1006	90	100
	1007	100	110
	1008	110	120
	1009	120	130
	1010	130	140
	1011	140	150
	1012	150	160
1.50%	1501	40	55
	1502	55	70
	1503	70	85
	1504	85	100
	1505	100	115
	1506	115	130
2.00%	1507	130	145
	1508	145	160
	2001	40	60
	2002	60	80
	2003	80	100
	2005	120	140
3.00%	2004	100	120
	2006	140	160
	3001	40	70
	3002	70	100
	3003	100	130
	3004	130	160

	Code	mm/min	mm/max
1.00%	101	40	50
	102	50	60
	103	60	70
	104	70	80
	105	80	90
	106	90	100
	107	100	110
	108	110	120
	109	120	130
	110	130	140
	111	140	150
	112	150	160
2.00%	201	40	60
	202	60	80
	203	80	100
	204	100	120
	205	120	140
	206	140	160
3.00%	301	40	70
	302	70	100
	303	100	130
	304	130	160

	Code	mm/min	mm/max
1.00%	151	40	50
	152	50	60
	153	60	70
	154	70	80
	155	80	90
	156	90	100
	157	100	110
	158	110	120
	159	120	130
	160	130	140
	161	140	150
	162	150	160
2.00%	251	40	60
	252	60	80
	253	80	100
	254	100	120
	255	120	140
	256	140	160
3.00%	351	40	70
	352	70	90
	353	90	110
	354	110	130



ROCKWOOL B.V.
Industrieweg 15
6045 JG Roermond
NEDERLAND

ROCKWOOL-2022-074 M2 DE MEENTE

M2 20/07/2022

E-mail : technisch.advies@rockwool.com
T : +31 475 353535